



# Boorolong Wind Farm

## In this issue

- Project update
- Proposed project layout
- Community survey
- Community sponsorship

## At a glance



**215k**

Expected homes powered



**400MW**

Expected capacity



**190k**

Expected tonnes of emissions avoided

## Project update

Welcome to our April newsletter for the proposed Boorolong Wind Farm, located on Anaiwan Country, approximately 20 kilometres north-west of Armidale, within the New England Renewable Energy Zone (REZ).

Since our last edition:

- Changes have been made to the wind turbine layout in response to the updated wind energy guidelines and community feedback.
- We have developed a community survey to gain a better understanding of the community's scenic values and understanding of wind farms and renewable energy.
- We participated in the inaugural New England Renewable Energy Careers Expo.



Credit: EnergyCo

## New England Renewable Energy Careers Expo

Squadron Energy participated in the inaugural New England Renewable Energy Careers Expo, joining around 100 people at Armidale's Town Hall last month to talk about the growing number of employment and business opportunities in New England's renewable energy sector.

The event, which was organised by local, state, and federal government and community-based organisations, highlighted the significant economic and employment opportunities that accompany the region's commitment to renewable energy.



Credit: EnergyCo

## Turbine layout

The [NSW Wind Energy Guideline](#) was released in November 2024 by the Department of Planning, Housing and Infrastructure (DPHI). We have developed a revised wind turbine layout in response to the updated guidelines and community feedback using the following principles:

- minimise impacts to high value vegetation
- reduce the maximum tip height from 300m to 270m
- use available information and the guideline's [Visual Technical Supplement](#) to assess visual impacts to nearby dwellings and adjust the layout in line with the guidelines
- test noise impacts against the [Noise Technical Supplement](#)
- maximise generation of renewable energy.



**NSW Wind  
Energy  
Guideline**

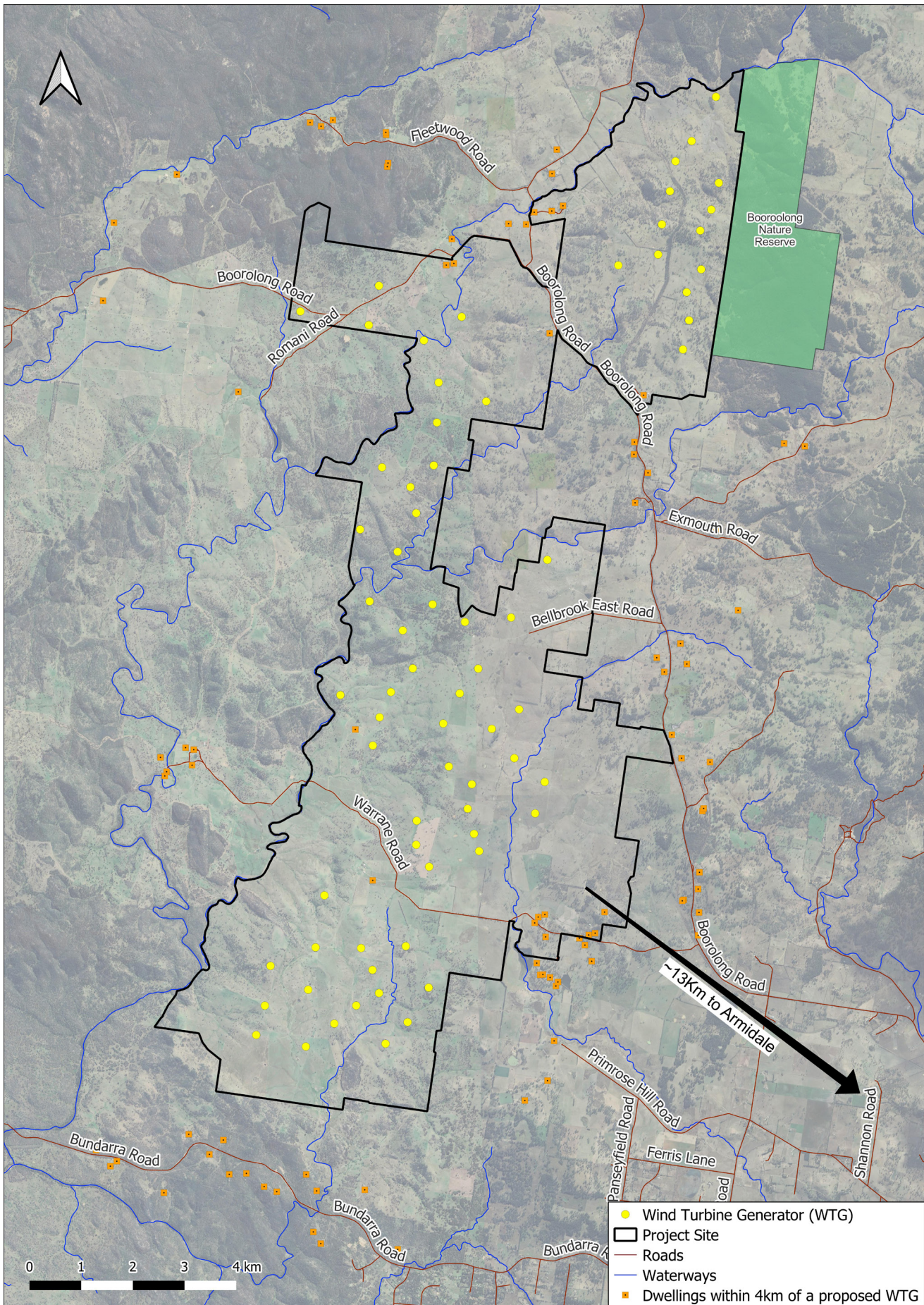


**NSW Wind  
Energy  
Guideline  
Visual  
Technical  
Supplement**



**NSW Wind  
Energy  
Guideline  
Noise  
Technical  
Supplement**

# Proposed project layout



## Community survey - We are seeking your input

In preparation for entering the NSW Planning system mid this year, we would like to gain a better understanding of the community's feedback on the scenic value of the local area and concerns and benefits of the project. Please scan the QR Code to provide your views.

At the end of the survey, you have the option to enter the draw to win one of two \$200 R.M. Williams vouchers.



Community survey

## Community sponsorship

Our sponsorship program is ongoing, and we encourage local groups to apply. Squadron Energy is keen to support projects that foster community connection and promote local economic development. Our recent sponsorships include:

- the Armidale Show
- Cultural Camps Aboriginal Corporation.

Applications are open for community sponsorship. For more information or to apply, scan the QR code or visit [squadronenergy.com/communitysponsorship](https://squadronenergy.com/communitysponsorship)

Our project team members are regularly in the New England region and are happy to meet with the community regarding the project. If you would like to meet with us, please reach out using the contact details below.



## Frequently asked questions

Curious about wind energy and how wind farms work? We have put together answers to our most 'frequently asked questions'.

For example:

- How does wind energy work?
- What is the carbon footprint of a wind turbine?
- Is wind energy the most affordable option?

Find the answers to these questions and more by scanning the QR code.



## Contact us

Kristy Old - Project Manager

Phone: 0483 923 676

Email: [boorolongwind@squadronenergy.com](mailto:boorolongwind@squadronenergy.com)

Web: [boorolongwindfarm.com.au](https://boorolongwindfarm.com.au)



[squadronenergy.com](https://squadronenergy.com)