



BOOROLONG WIND FARM

THE PROJECT

NEW ENGLAND REZ

ABOUT US

BENEFITS

BOOROLONG WIND FARM

CWP RENEWABLES IS INVESTIGATING A POTENTIAL WIND FARM DEVELOPMENT LOCATED APPROXIMATELY 20 KM NORTH-WEST OF ARMIDALE.

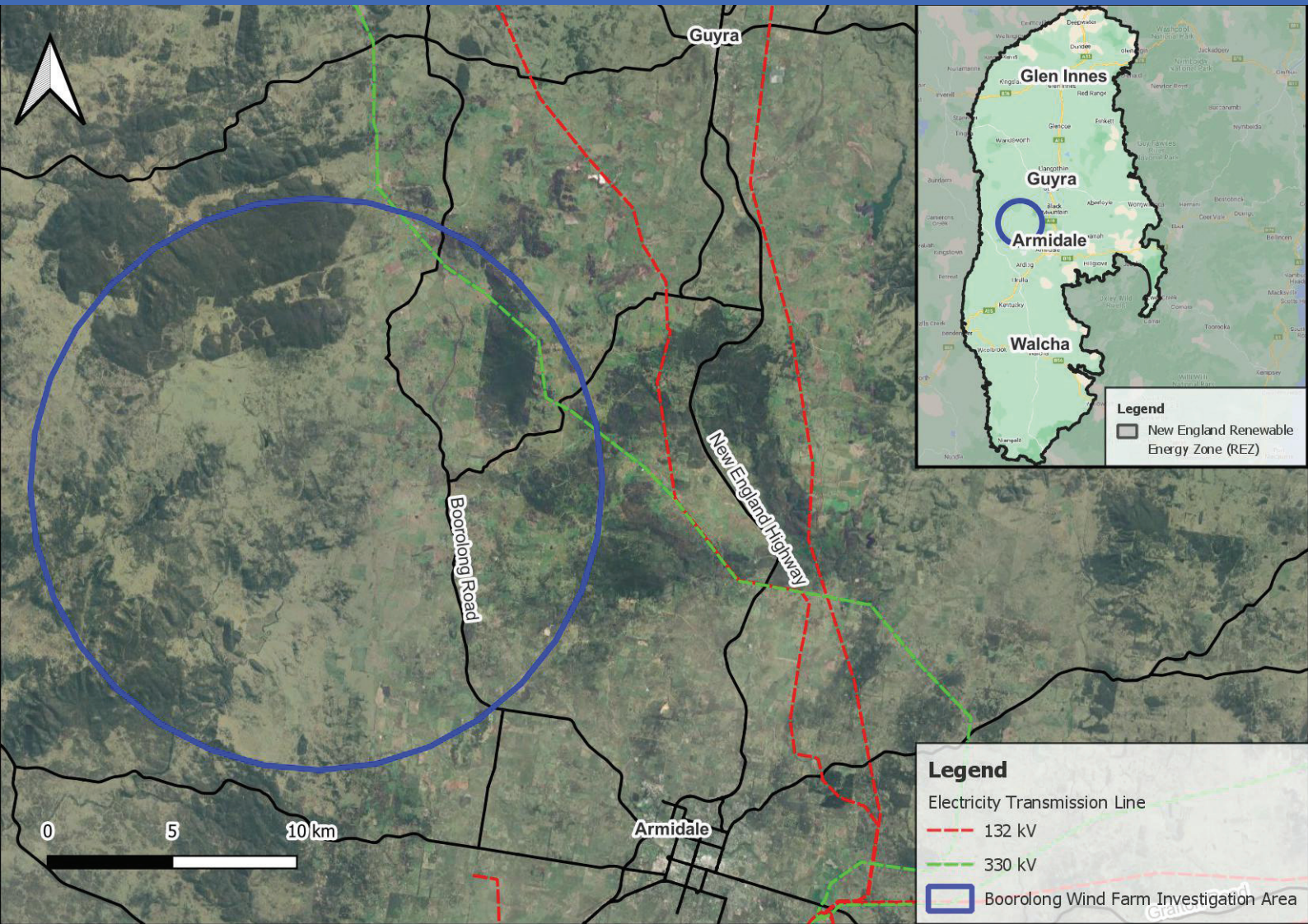
The location is well suited to wind generation due to a reliable wind resource, low density of rural residential dwellings, and close proximity to an existing transmission line.

The investigation area sits within both the Armidale Regional Council and Uralla Shire Council areas.

CWP Renewables has been developing projects in Australia since 2007. Key development activities are coordinated from our offices in Newcastle and Sydney, with asset management services delivered from Canberra.



INVESTIGATION AREA



THE PROJECT

The Boorolong Wind Farm investigation area is on private land north-west of Armidale within the Boorolong and Dumaresq localities.

The land proposed for the development is currently freehold and predominantly used for primary production.

The area has a proven wind resource with access to the existing high voltage transmission network.



NEW ENGLAND RENEWABLE ENERGY ZONE (REZ)

The NSW Government has set out a plan to deliver several Renewable Energy Zones (REZs) within New South Wales (NSW).

A REZ involves the coordinated development of new grid infrastructure in renewable energy rich areas to connect multiple renewable energy generators (such as solar and wind farms) in the same location. One of these REZs is the New England REZ.



The designation of a REZ is intended to result in the development of additional capacity for renewable electricity generation, producing low-cost power for NSW homeowners and business, driving down carbon emissions within the electricity generation sector, and importantly, driving up job growth and employment opportunities through enabling significant investment into the regions.

For more information on the New England REZ, including an indicative location, visit www.energy.nsw.gov.au/renewables/renewable-energy-zones



ABOUT CWP RENEWABLES

CWP Renewables is a renewable energy company that develops, owns and operates renewable energy assets in Australia. Our unique approach to own and manage each project from inception through to full operation ensures genuine engagement with all stakeholders at every stage.



PROJECTS OWNED



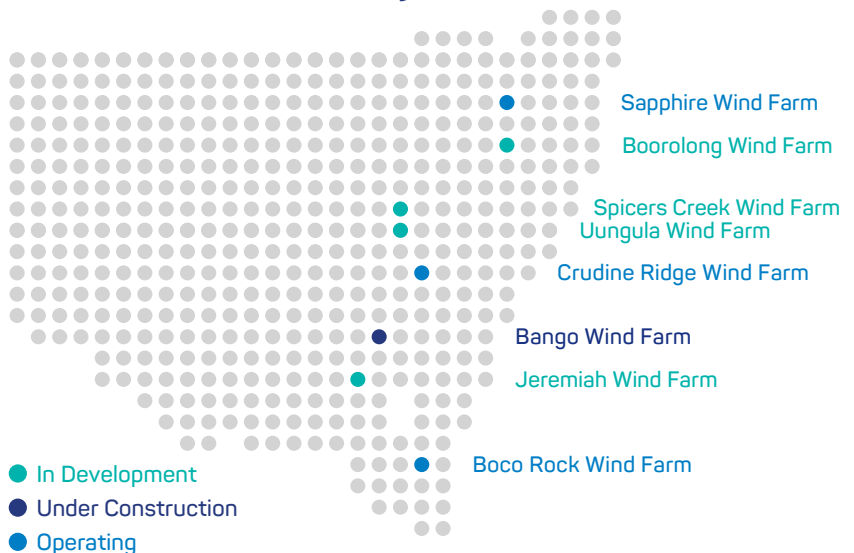
ASSETS MANAGED



DEVELOPMENT PIPELINE

We have proven experience and expertise across the project lifecycle, and work with local communities to lead the transition to Australia's low-cost, low-emissions energy future. CWP Renewables has been active in the broader New England region, with the development of the 73-wind turbine Sapphire Wind Farm near Inverell.

CWP Renewables Projects



LOCAL AND REGIONAL BENEFITS

A wind farm development can provide substantial benefits to a local and regional community through direct employment, community investment and significant flow-on effects for the region. CWP Renewables looks to engage local contractors and resources throughout the project lifecycle. We aim to connect with local businesses and present them with opportunities to get involved.

CWP Renewables offers a Community Benefit Sharing and Sponsorship Program. For details about how to apply please see the community section of our website www.cwprenewables.com/community



PROJECT TIMELINE

CWP Renewables has been working with landholders in the Boorolong and Dumeresq area since 2020. We are now at the point where we can assess the feasibility of the wind farm in more detail having gathered local wind and biodiversity data.



A key step in this process, before presenting a proposed wind farm layout, is to hear community perspectives and gather feedback on a proposal in the area. We are reaching out to nearest neighbours first, and will be carrying out wider community engagement later in 2022.

To keep up-to-date on future news and community engagement events, please sign up to our newsletter: www.cwprenewables.com/subscribe-bowf



The Boorolong Wind Farm project team are in the area regularly to answer questions and understand community views. Please get it touch with us to discuss further.

CONTACT US

SAMUEL NEWMAN – Project Manager
Phone: 0428 209 878

Email: info@boorolongwindfarm.com.au

PO Box 1708 Newcastle NSW 2300

DUNCAN STUART – Project Developer
Phone: 0413 812 283

cwprenewables.com