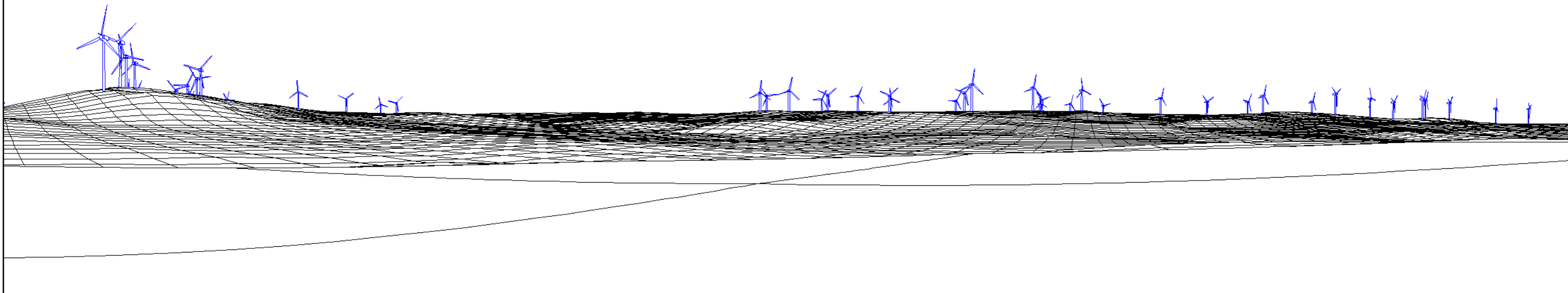
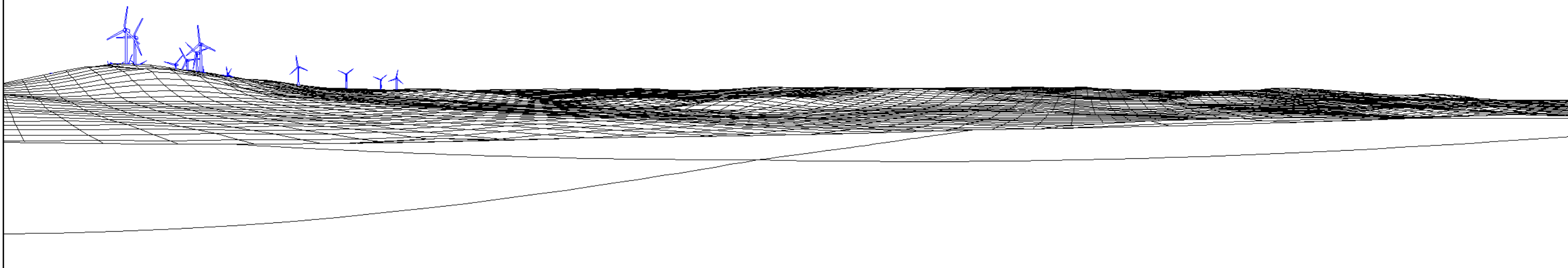


122 TURBINE VIEW



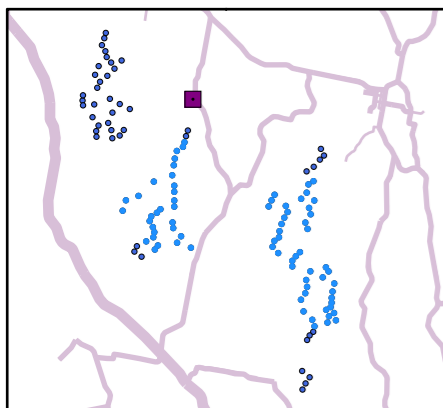
75 TURBINE VIEW



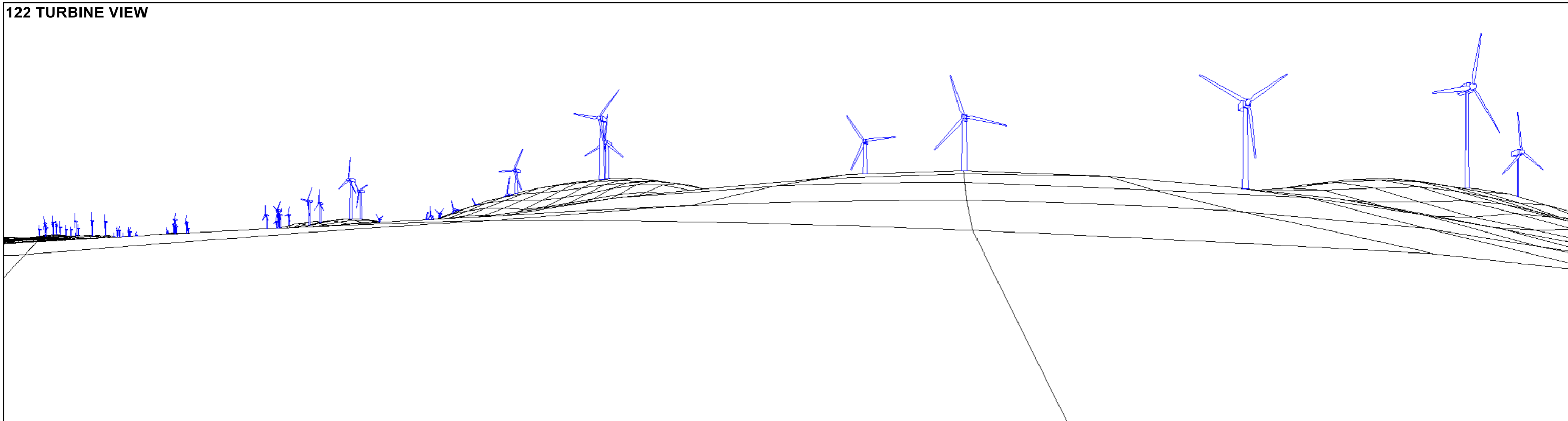
BANGO WIND FARM: BAN020 SPRINGVALE

Grid reference: 665722E 6178761N
Viewpoint elevation: 560 m AHD
Camera height: 2 m

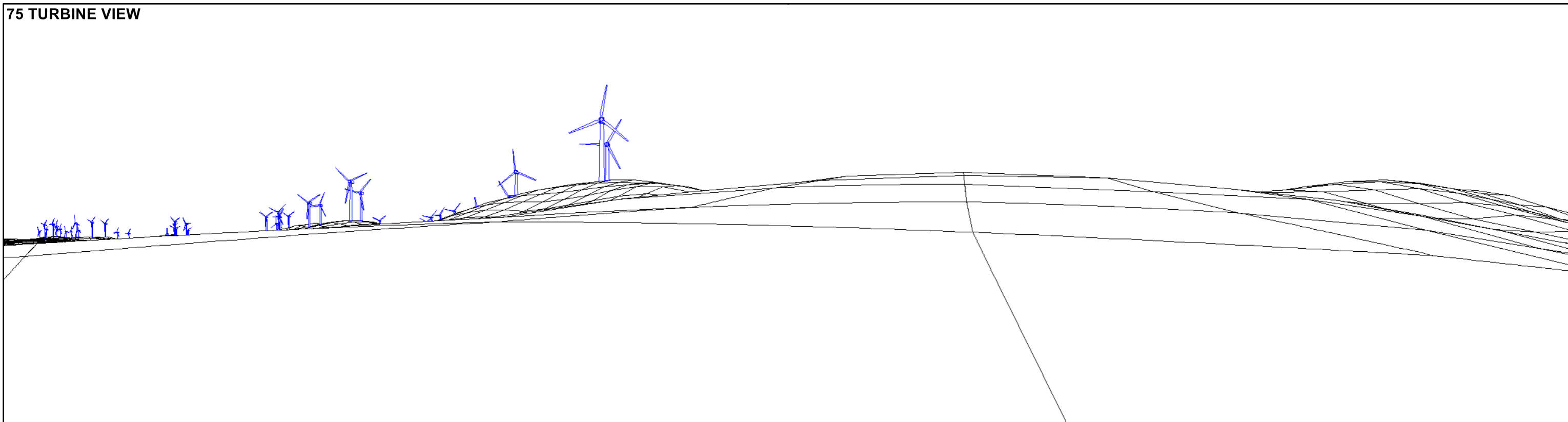
Turbine blade tip height: 200 m
View direction: 246°
Included angle: 130°
Distance to nearest turbine: 2.1 km



122 TURBINE VIEW



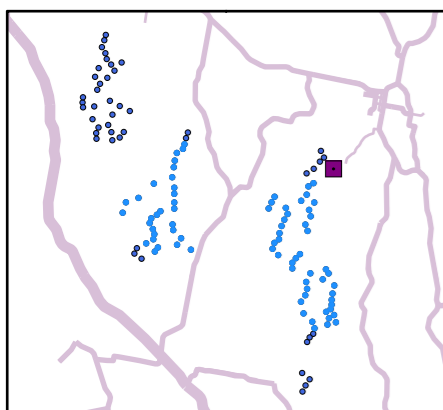
75 TURBINE VIEW



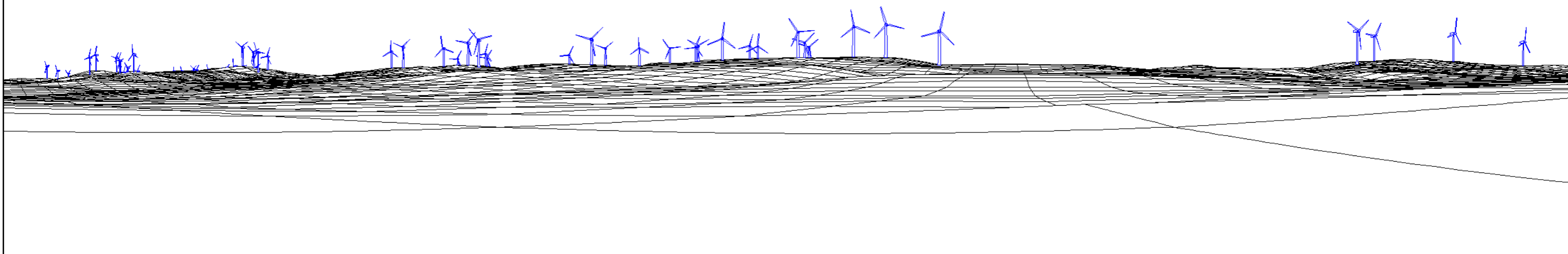
BANGO WIND FARM: BAN041 HILLVIEW

Grid reference: 672598E 6175449N
Viewpoint elevation: 550 m AHD
Camera height: 2 m

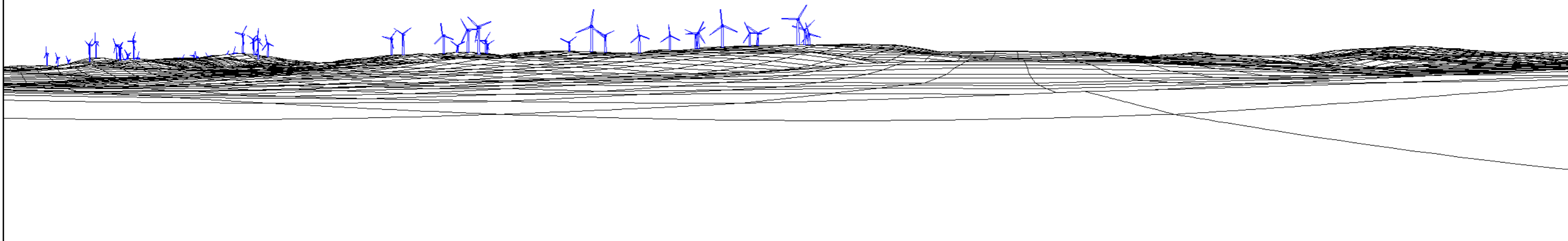
Turbine blade tip height: 200 m
View direction: 253°
Included angle: 155°
Distance to nearest turbine: 1.2 km



122 TURBINE VIEW



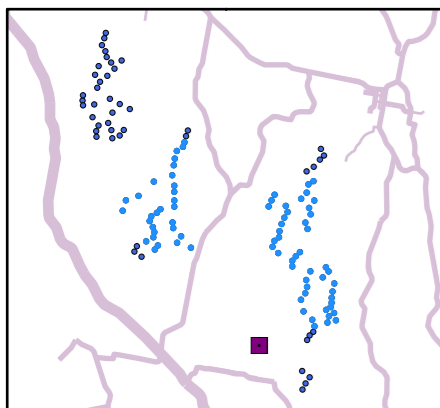
75 TURBINE VIEW



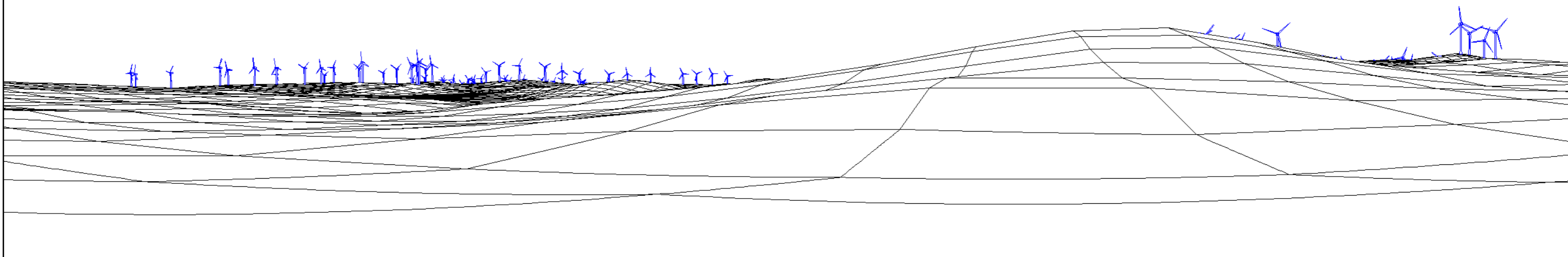
BANGO WIND FARM: BAN060 MONTALTA

Grid reference: 668961E 6166710N
Viewpoint elevation: 608 m AHD
Camera height: 2 m

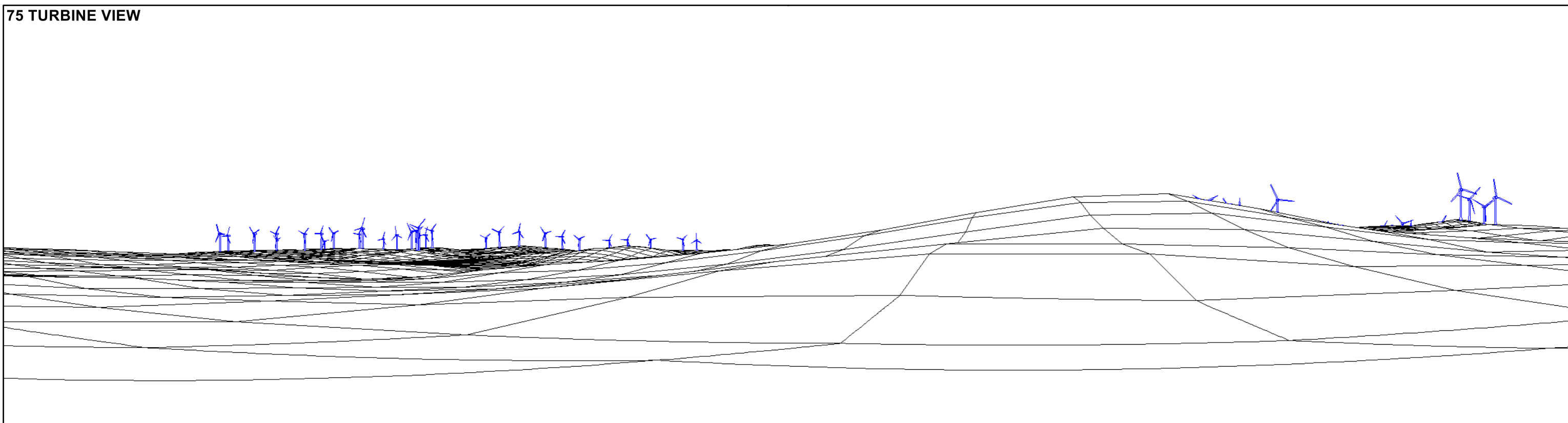
Turbine blade tip height: 200 m
View direction: 70°
Included angle: 140°
Distance to nearest turbine: 2.7 km



122 TURBINE VIEW



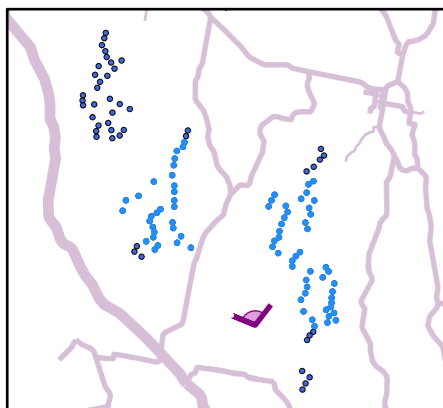
75 TURBINE VIEW



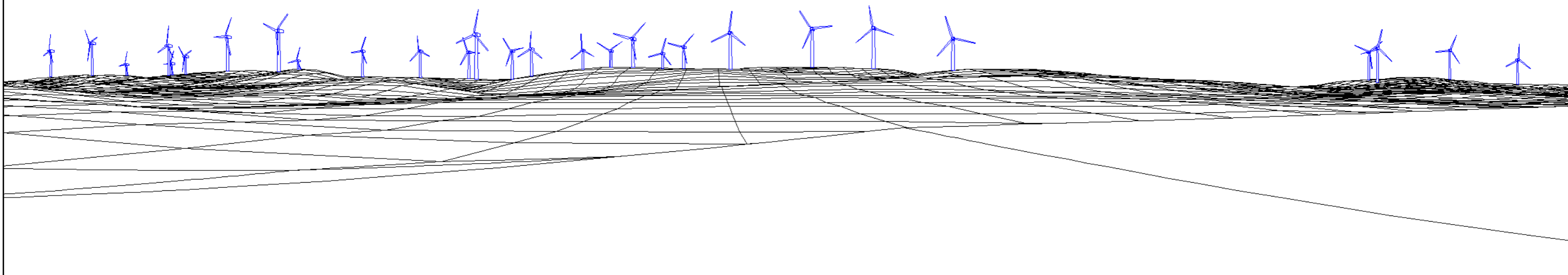
BANGO WIND FARM: BAN144 LETONA (LEFT VIEW)

Grid reference: 668769E 6167707N
Viewpoint elevation: 598 m AHD
Camera height: 2 m

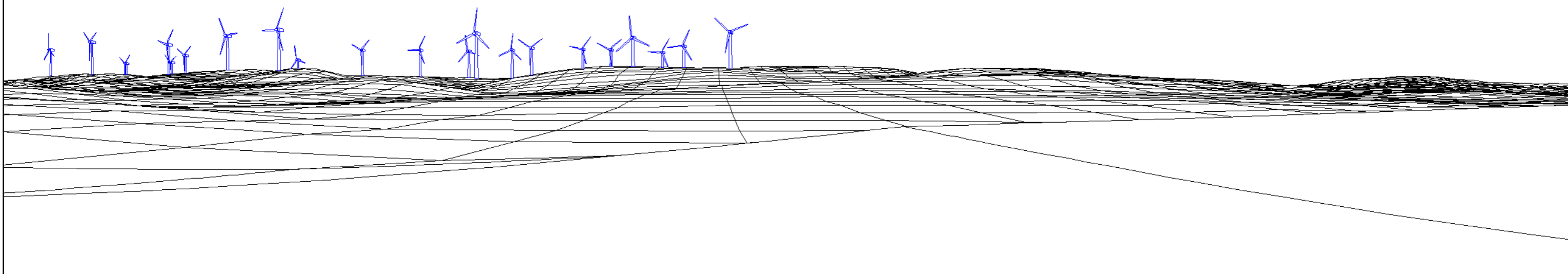
Turbine blade tip height: 200 m
View direction: 345°
Included angle: 105°
Distance to nearest turbine: 2.5 km



122 TURBINE VIEW



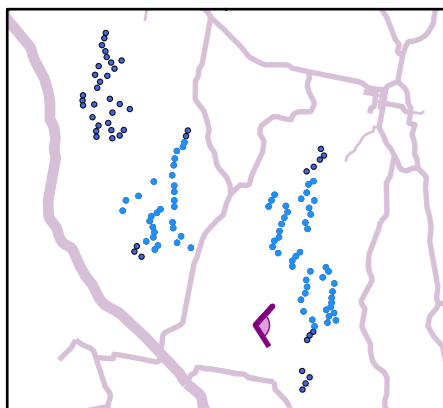
75 TURBINE VIEW



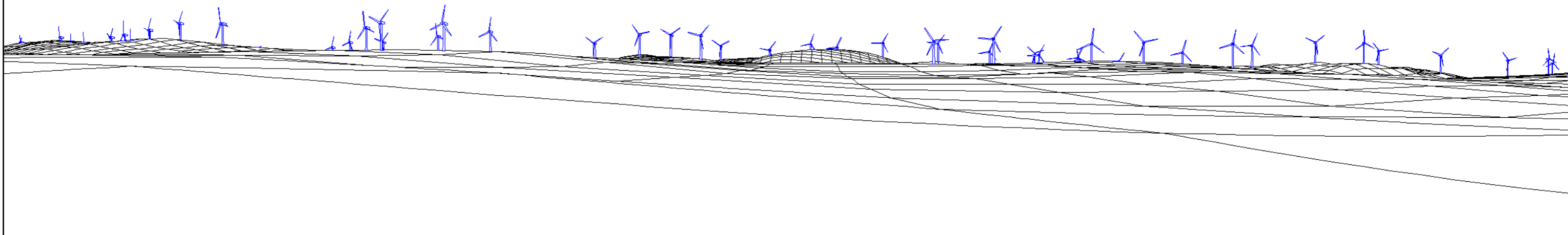
BANGO WIND FARM: BAN144 LETONA (RIGHT VIEW)

Grid reference: 668769E 6167707N
Viewpoint elevation: 598 m AHD
Camera height: 2 m

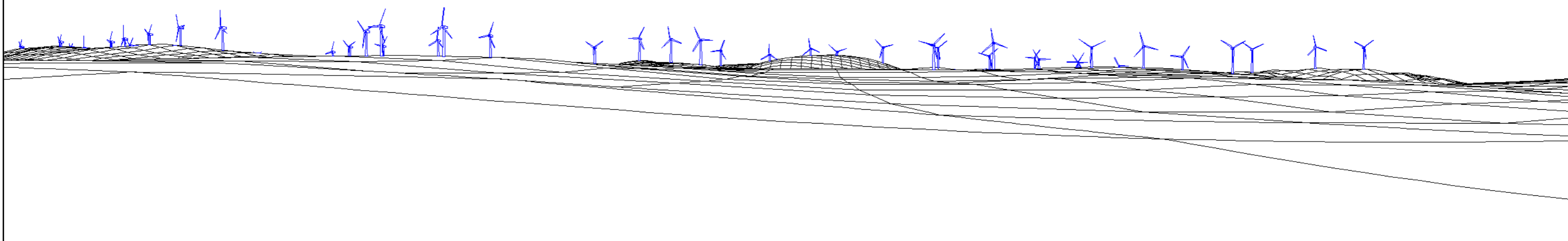
Turbine blade tip height: 200 m
View direction: 95°
Included angle: 105°
Distance to nearest turbine: 2.5 km



122 TURBINE VIEW



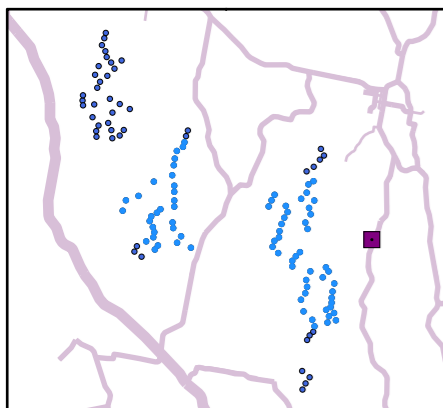
75 TURBINE VIEW



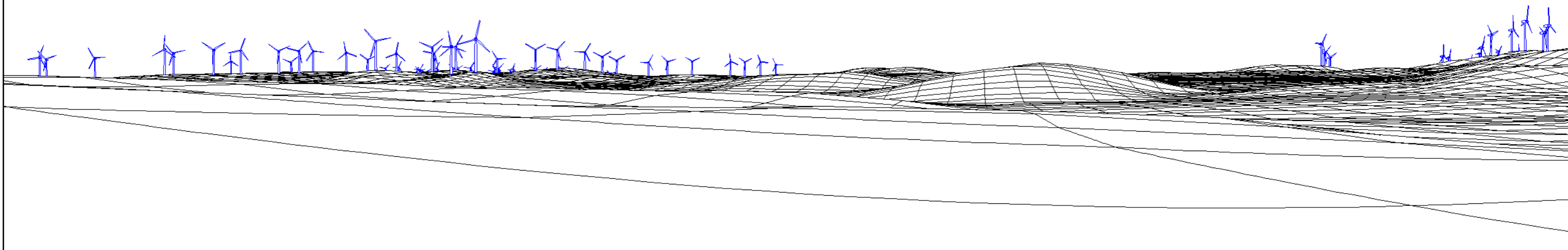
BANGO WIND FARM: BAN152 EVERSLEIGH

Grid reference: 674474E 6171887N
Viewpoint elevation: 594 m AHD
Camera height: 2 m

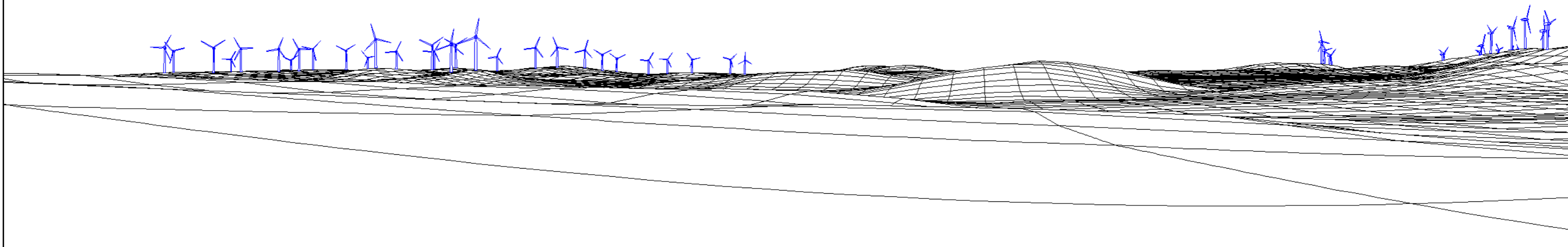
Turbine blade tip height: 200 m
View direction: 267°
Included angle: 130°
Distance to nearest turbine: 2.6 km



122 TURBINE VIEW



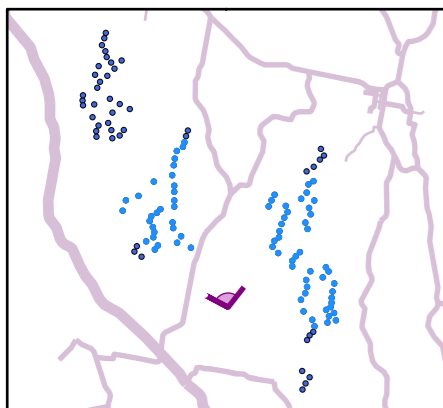
75 TURBINE VIEW



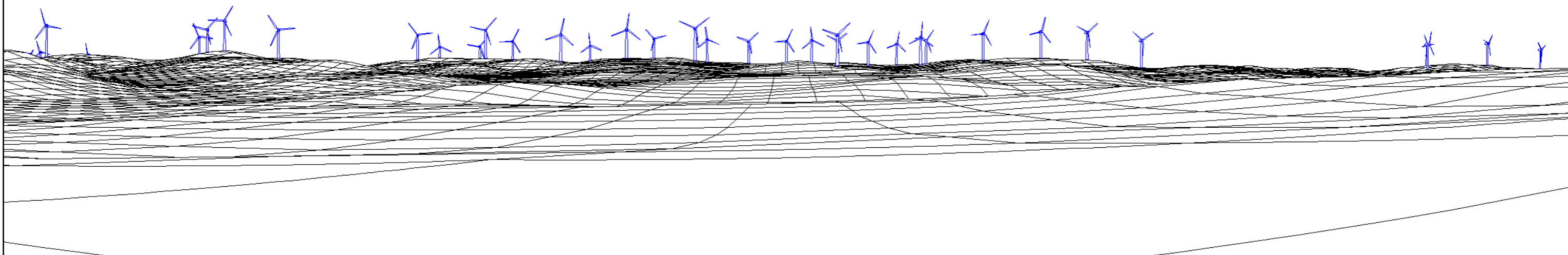
BANGO WIND FARM: BAN166 RONEA PARK (LEFT VIEW)

Grid reference: 667439E 6168579N
Viewpoint elevation: 595 m AHD
Camera height: 2 m

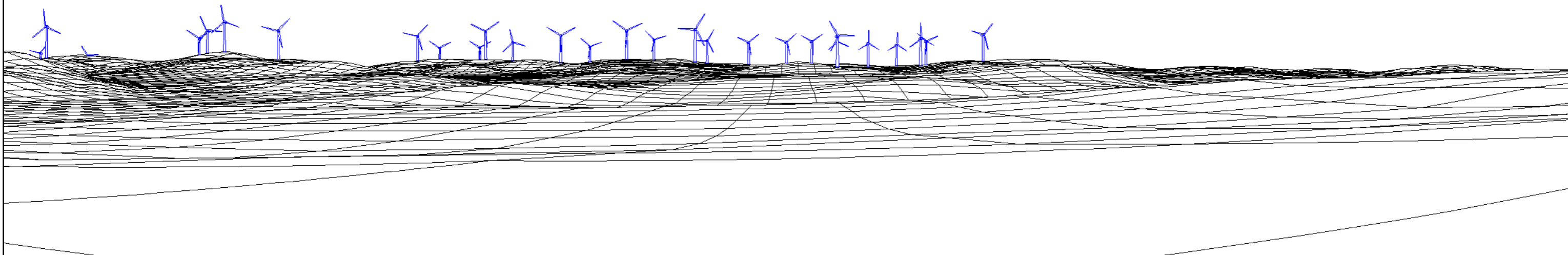
Turbine blade tip height: 200 m
View direction: 348°
Included angle: 100°
Distance to nearest turbine: 3.4 km



122 TURBINE VIEW



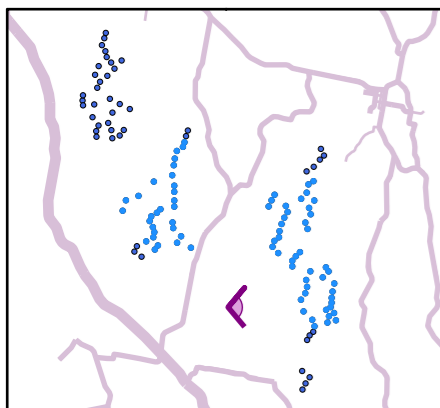
75 TURBINE VIEW



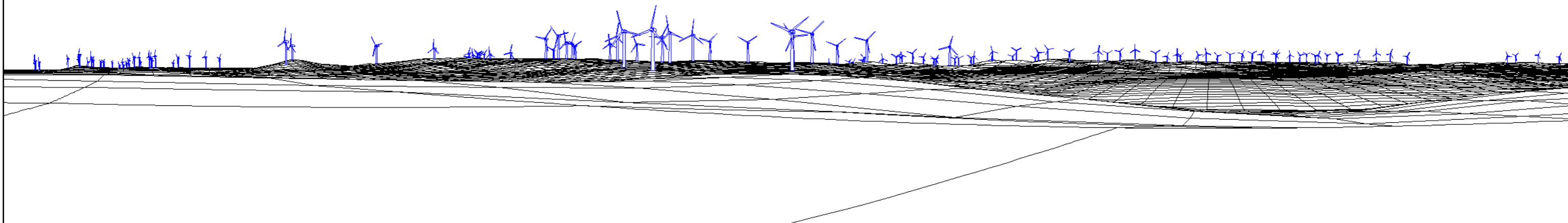
BANGO WIND FARM: BAN166 RONEA PARK (RIGHT VIEW)

Grid reference: 667439E 6168579N
Viewpoint elevation: 595 m AHD
Camera height: 2 m

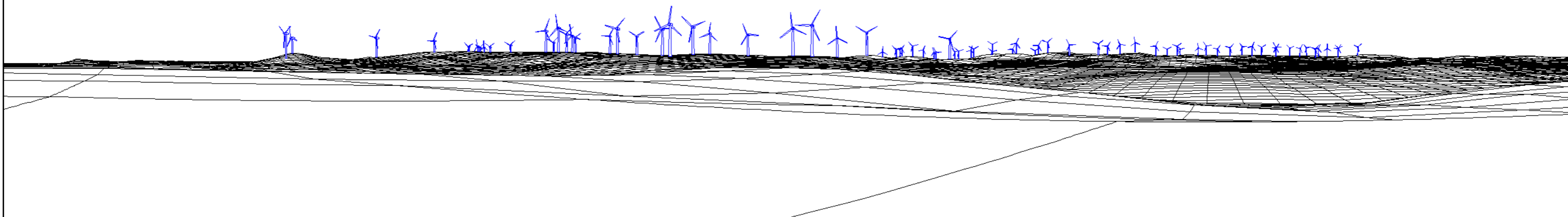
Turbine blade tip height: 200 m
View direction: 90°
Included angle: 100°
Distance to nearest turbine: 3.4 km



122 TURBINE VIEW



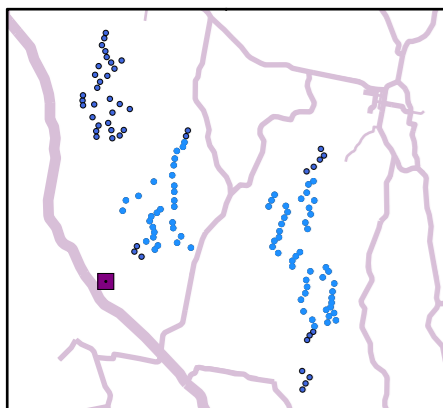
75 TURBINE VIEW



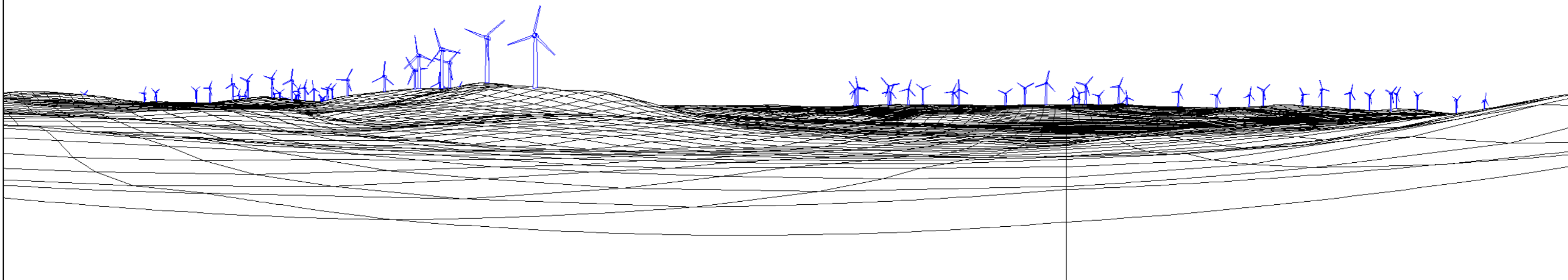
BANGO WIND FARM: BAN260 SHAW

Grid reference: 661456E 6169844N
Viewpoint elevation: 602 m AHD
Camera height: 2 m

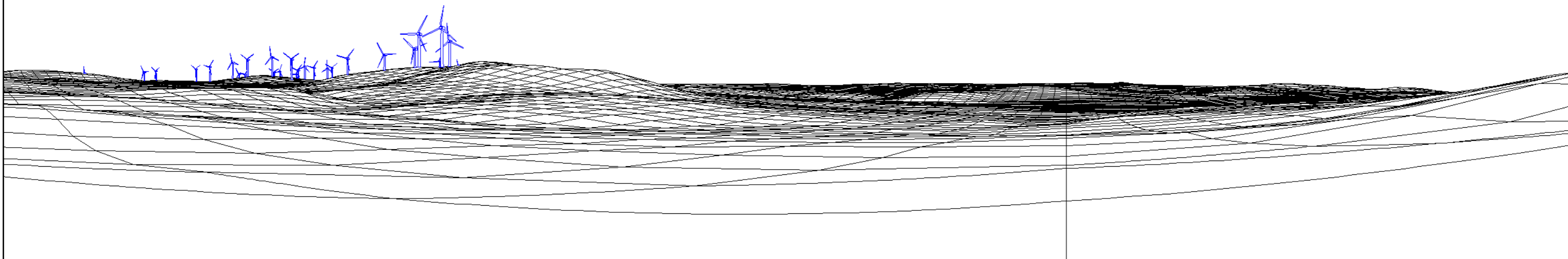
Turbine blade tip height: 200 m
View direction: 55°
Included angle: 130°
Distance to nearest turbine: 2.8 km



122 TURBINE VIEW



75 TURBINE VIEW



BANGO WIND FARM: BAN282 LEMBIT

Grid reference: 666684E 6178400N
Viewpoint elevation: 574 m AHD
Camera height: 2 m

Turbine blade tip height: 200 m
View direction: 247°
Included angle: 130°
Distance to nearest turbine: 2.2 km

