



Clarke Creek Wind Farm

Project update

Environmental update

Component deliveries

Community Benefit Fund

Project update

Construction is continuing at Clarke Creek Wind Farm after the Christmas break. Our dedicated project team has been working hard and there are now 10 turbines fully erected with another 25 well underway.

The 4.5MW turbines stand at 207 metres tall and are built with 13 components, including three 76.2m blades.

There are three stages of tower erection:

- Stage one involves offloading all major components from their transportation and installing tower section one. Sixteen crane lifts using two cranes are required, including a 500t crane capable of lifting 124 tonnes.
- Stage two involves the pre-installation of turbine sections two to four, electrical cabinets, internal lift and other accessories, requiring 12 crane lifts.
- Stage three involves the installation of turbine sections five to seven, the nacelle, generator and finally, the rotor. A 144m crane capable of lifting 150 tonnes is used to achieve this.



Environmental update

We thank the Livingstone Shire Council's Community Nursery for their support in nurturing relocated cycad seeds from the project site, as part of our Cycad Impact Management Plan. The nursery, located at Yeppoon Landfill, relies on the hard work and effort of their local network of volunteers who help with various nursery tasks every Wednesday and Friday.



Vince from Clarke Creek Wind Farm with Joe from GreenTape Solutions, and Mick from Livingstone Council at Livingstone Shire Council's Community Nursery



Component deliveries



Oversize overmass (OSOM) transport movements restarted in early January from Gladstone Port. Deliveries take place overnight arriving at site between 5a.m - 7a.m. Opt in for SMS notifications of transport movements for up-to-date information.



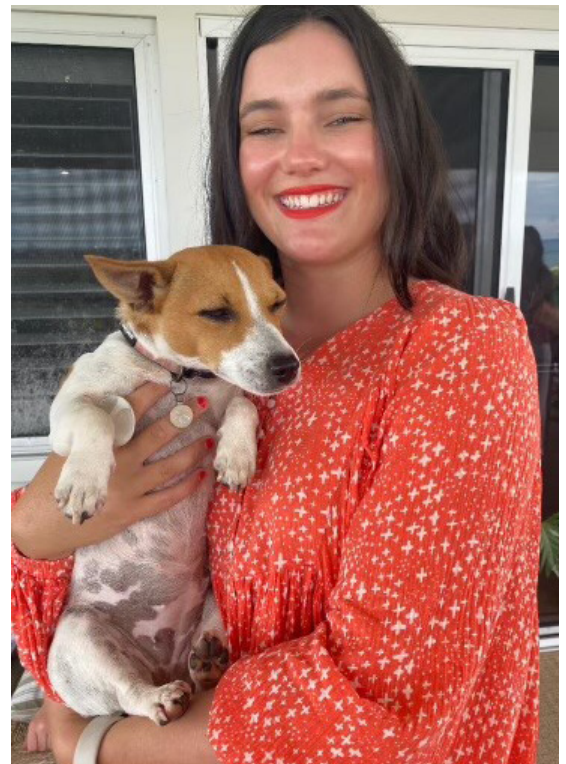
Community Benefit Fund

Scholarship recipient

We are committed to sharing the benefits of the project with the local community. The Clarke Creek Wind Farm Community Fund provide funds to enhance and enrich the community, including education scholarships.

Olivia Sherry received a scholarship in 2022 to study a Bachelor of Primary Education at CQUniversity's Rockhampton campus. Olivia is passionate about rural education and says, "Children in rural and remote areas can be disadvantaged purely due to their geographical isolation".

Olivia completed her primary schooling at Clarke Creek School, travelling to school from her family's property. She says that the scholarship is a weight off her shoulders for the financial burden of a degree. "The Community Fund is fantastic for people in remote areas which will definitely make completing study easier and a good way to contribute back to the community."



Scholarship recipient Olivia Sherry

Marlborough Historical Museum

In a boost for local heritage and preservation, the Marlborough Historical Museum which is run by local community volunteers, secured more than \$5,000 in funding to purchase new counter displays to house their world famous Chrysoprase exhibits.

This investment aims to enhance the museum's ability to showcase its rich collection of historical artifacts and handmade one-of-a-kind jewellery pieces.

Local volunteer and Secretary of the Museum Lynette Leigh thanked Squadron Energy for their support, which will not only elevate the visitor experience but also ensure the long-term preservation of Marlborough's cultural treasures.

"The Marlborough region is world famous in the jewellery business for producing the world's finest Chrysoprase, a semi-precious gem which has a long history of admirers ranging from Alexander the Great to Cleopatra" Ms Leigh said.

"We would like to thank the Squadron Energy team for their generous support. These upgrades were crucial to maintain the museum for future local generations and visitors alike."



Janet, Elaine, and Lynette at the Marlborough Historical Museum



Contact us

John Macchiusi - Project Director

Phone: 0483 915 303

Email: clarkecreek@squadronenergy.com

PO Box 3155, Broadway Nedlands WA 6009

squadronenergy.com