



# Clarke Creek Wind Farm

Project update

Wind farm tour

Community update

Transport movements

## Project update

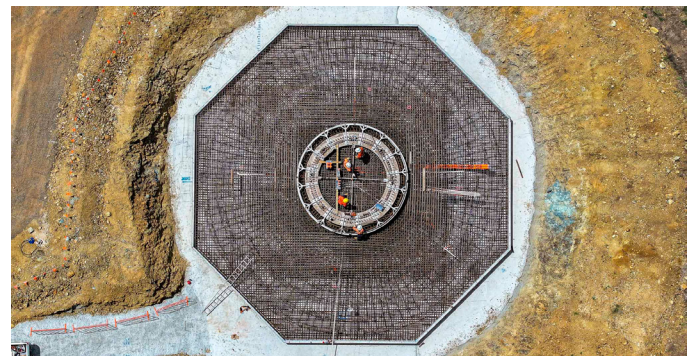
The Clarke Creek Wind Farm team has now erected 18 wind turbines with another 19 well underway. Each turbine stands 207 metres tall and has a capacity of 4.5MW, built with 13 components including three 76.2m blades.

Construction of the turbine foundation begins with excavating the ground. Next, a layer of blinding concrete is installed. This non-structural layer allows the installation of steel components within the foundation before the main concrete pour.

Following this, around 90 to 100 tonnes of reinforcing steel, plates and anchor bolts are assembled along with embedded electrical infrastructure. Around 1,300 to 1,600 tonnes of concrete is placed in each foundation in one continuous pour.

Once cured and inspected, the foundation is backfilled, and an adjacent hardstand is prepared to install turbine components. The electrical infrastructure, including underground and overhead reticulation is installed at the same time.

When the turbines are erected, the foundation will bear a total weight of about 805 tonnes.



## Wind farm tour

We recently welcomed Senator for Queensland Matt Canavan along with Federal Member for Capricornia Michelle Landry and LNP Candidate for Mirani Glen Kelly to Clarke Creek Wind Farm. The visitors received an overview of the project and a tour of the wind farm.



Left to right: Michelle Landry MP (fourth from the left), Senator Matt Canavan (fifth from the left), Glen Kelly LNP Candidate (fourth from the right).



## Community update

Squadron Energy was proud to sponsor the 38th Marlborough Agricultural Show. In addition, we were pleased to help bring the BreastScreen Queensland Bus to the show to facilitate more than 20 free vital health screenings for the local community.



We are also excited to support Life Education Central Queensland's Healthy Harold, which recently hosted health education workshops at Clarke Creek State School and Marlborough State School.

Healthy Harold, an iconic and beloved mascot, teaches crucial life skills and knowledge to students. The kids at both schools enjoyed the visit and were delighted at the chance for a pat.

## Transport movements

Tower component deliveries are shipped monthly to Gladstone Port consisting of components and accessories to construct eight turbines.

Oversize overmass (OSOM) transport movements leave Gladstone Port and take place overnight arriving at the site between 5a.m - 7a.m.

Opt in for SMS notifications of transport movements for up-to-date information by providing your mobile number to [clarkecreek@squadronenergy.com](mailto:clarkecreek@squadronenergy.com)



## Contact us

**John Macchiusi - Project Director**

Phone: 0483 915 303

Email: [clarkecreek@squadronenergy.com](mailto:clarkecreek@squadronenergy.com)

PO Box 3155, Broadway Nedlands WA 6009

[squadronenergy.com](http://squadronenergy.com)