



# Conargo Wind Farm

Project overview

Squadron Energy

Investigation area

Next steps

## Conargo Wind Farm

Squadron Energy is investigating a potential wind and battery project approximately 13km east of Conargo, NSW.

The location is well suited to wind generation due to a reliable wind resource, low density of residential dwellings, close proximity to an existing transmission line and the proposed VNI West route.

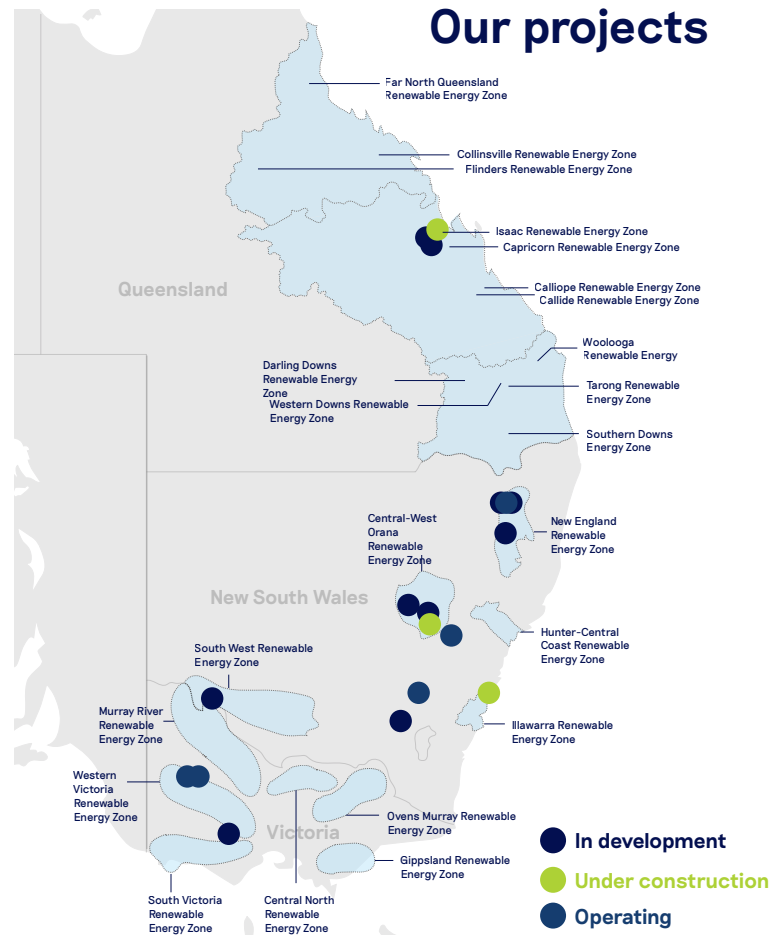
## Squadron Energy

Squadron Energy is Australia's leading renewable energy company that develops, operates and owns renewable energy assets in Australia.

We are 100% Australian owned and have 1.1 gigawatts (GW) of renewable energy in operation and 900MW under construction.

With proven experience and expertise across the project lifecycle, we work with local communities and our customers to lead the transition to Australia's clean energy future.

## Our projects



# NSW South West Renewable Energy Zone

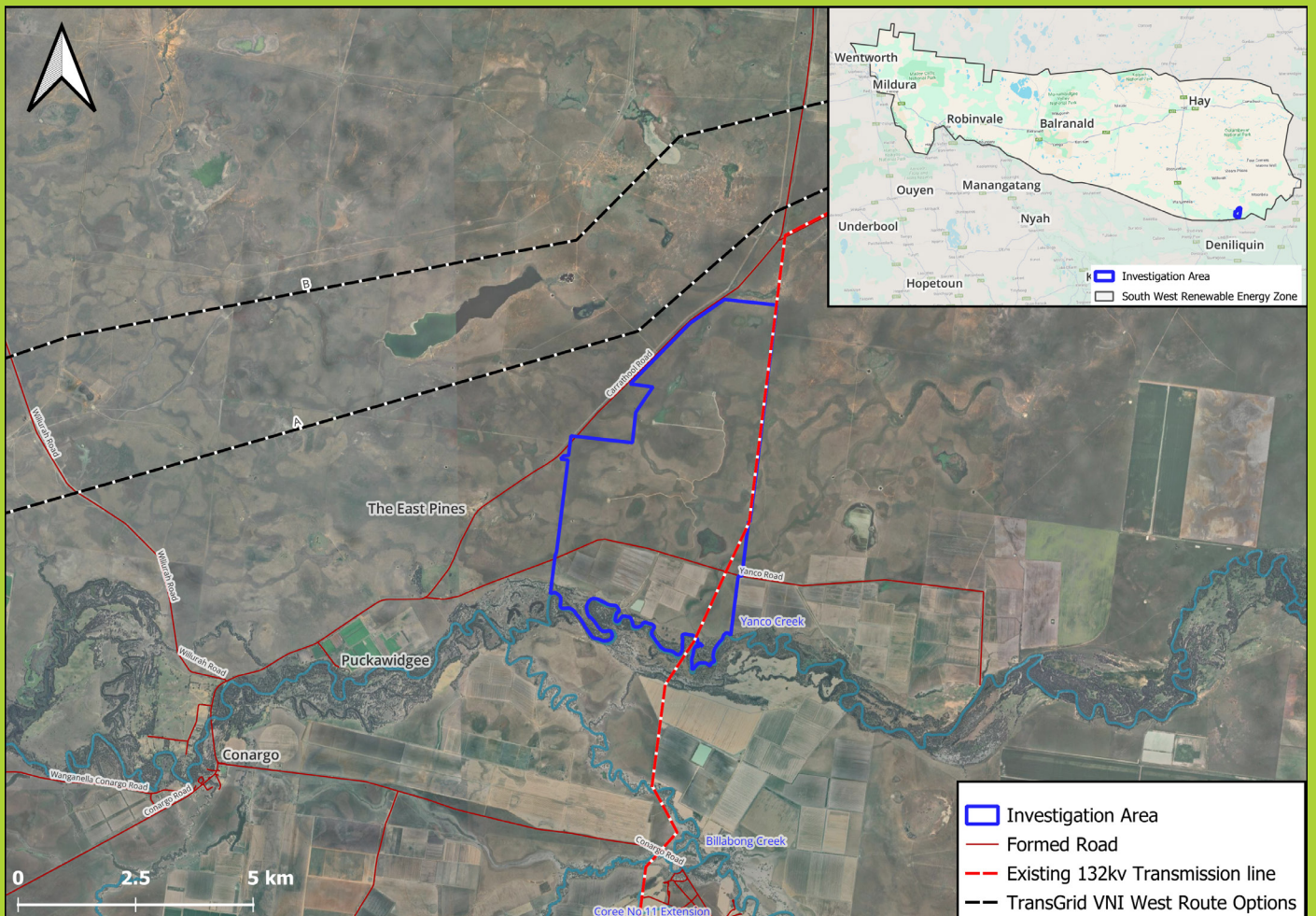
The proposed project site is within the NSW South West Renewable Energy Zone (REZ). A REZ involves the coordinated development of new grid infrastructure in energy rich areas to connect multiple renewable energy generators (such as solar and wind farms) in the same location.

The designation of a REZ is intended to result in the development of additional capacity for renewable electricity generation, producing low-cost power for NSW homeowners and business, driving down carbon emissions within the electricity generation sector, and importantly, driving job growth and employment opportunities through enabling significant investment into the regions.

For more information on the South West REZ, including an indicative location, visit: <https://www.energyco.nsw.gov.au/sw-rez>



## Investigation area



# Development process and next steps

The Conargo Wind Farm and battery project investigation area is on freehold privately owned land north-east of Conargo.

The selection of wind farm locations involves a combination of desktop searches, physical investigations and, fundamentally, landowner interest and community support.

Conargo Wind Farm is in the early stages of development and we are preparing a Scoping Report as the first stage of the NSW State Significant Development approval process. We are carrying out preliminary studies and community engagement to inform the report and initial project design.

## Environmental assessment process



## Local and regional benefits

A wind farm development can provide substantial benefits to a local and regional community through direct employment, community investment and significant flow-on effects for the region.

Squadron Energy is committed to sharing the value and benefits of our projects by supporting communities over the long term. We do this through opportunities such as co-investment, planning agreements with local councils, community sponsorships and grant initiatives, and other regional benefit initiatives.

We have recently completed a trial to boost telecommunications network coverage at our Spicers Creek Wind Farm in the Central West. We plan to offer similar opportunities tailored to each local community where we work.

We recognise each community is different and through consultation and partnerships with councils, communities and local groups, we tailor benefits at each project to make positive lasting local contributions.

Visit [squadronenergy.com/community](https://squadronenergy.com/community) or get in touch with the project team to find out more about the benefit sharing opportunities.

## Community Drop-In Session

Early community consultation is key to developing a considered project. Please join us at our community drop in session or contact us on the details below to provide feedback.

**7/ When:**  
Thursday 21 March  
1p.m – 6p.m.

**7/ Location:**  
Corner Conargo Rd and Carrathool Rd  
Conargo NSW 2710

**RSVP is not required**  
Please contact us if you would like more information.



## Contact us

**Aurore Pont - Project Developer**

Phone: 0491 234 225

Email: [info@squadronenergy.com.au](mailto:info@squadronenergy.com.au)

PO Box 1708, Newcastle NSW 2300

[squadronenergy.com](https://squadronenergy.com)