



AARONS PASS ROAD (Aug 18 – Dec 18)

- 20km upgrade to facilitate oversized turbine deliveries
- Local community interaction focus: dust suppression, traffic control (design includes passing bays), and notification of delivery periods



WIND FARM (Aug 18 – Oct 19)

- 37 Wind Turbines with capacity to power up to 55,000 homes
- **GEZ Consortium** to undertake construction of the site, which includes:
 - 34km of internal **access tracks**
 - Turbine **foundations** and crane pads
 - Electrical **collector networks**
 - Wind **turbine erection** and commissioning
- Quarries on the site will significantly reduce local road traffic



SECTION 1 (completion : Jun 19)



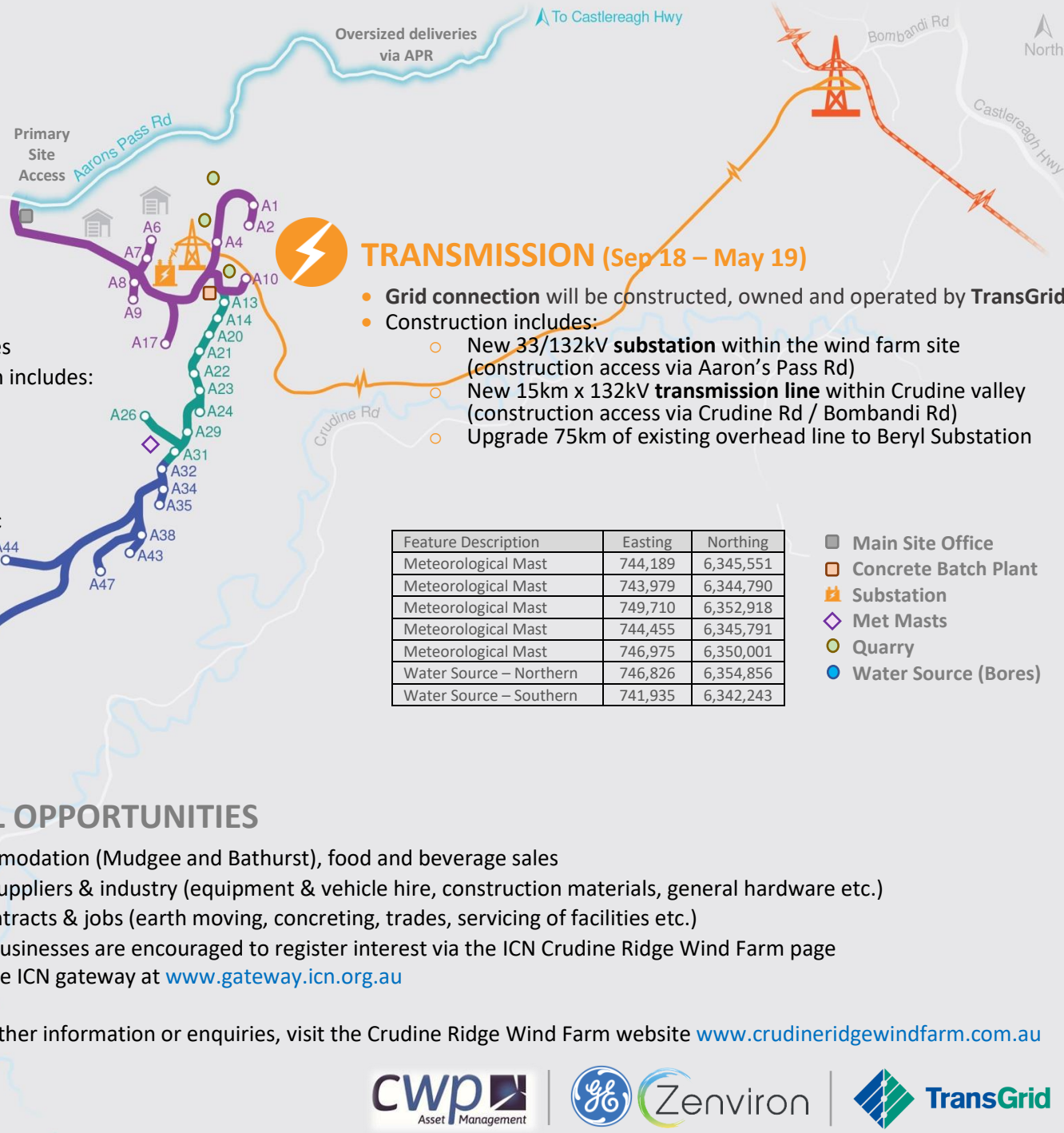
SECTION 2 (Completion: Jul 19)



SECTION 3 (Completion: Sep 19)



SECTION 4 (Completion: Oct 19)



TRANSMISSION (Sep 18 – May 19)

- **Grid connection** will be constructed, owned and operated by TransGrid
- Construction includes:
 - New 33/132kV **substation** within the wind farm site (construction access via Aaron's Pass Rd)
 - New 15km x 132kV **transmission line** within Crudine valley (construction access via Crudine Rd / Bombandi Rd)
 - Upgrade 75km of existing overhead line to Beryl Substation

| Feature Description | Easting | Northing |
|-------------------------|---------|-----------|
| Meteorological Mast | 744,189 | 6,345,551 |
| Meteorological Mast | 743,979 | 6,344,790 |
| Meteorological Mast | 749,710 | 6,352,918 |
| Meteorological Mast | 744,455 | 6,345,791 |
| Meteorological Mast | 746,975 | 6,350,001 |
| Water Source – Northern | 746,826 | 6,354,856 |
| Water Source – Southern | 741,935 | 6,342,243 |

- Main Site Office
- Concrete Batch Plant
- Substation
- ◆ Met Masts
- Quarry
- Water Source (Bores)

LOCAL OPPORTUNITIES

- Accommodation (Mudgee and Bathurst), food and beverage sales
- Local suppliers & industry (equipment & vehicle hire, construction materials, general hardware etc.)
- Subcontracts & jobs (earth moving, concreting, trades, servicing of facilities etc.)
- Local businesses are encouraged to register interest via the ICN Crudine Ridge Wind Farm page. Visit the ICN gateway at www.gateway.icn.org.au

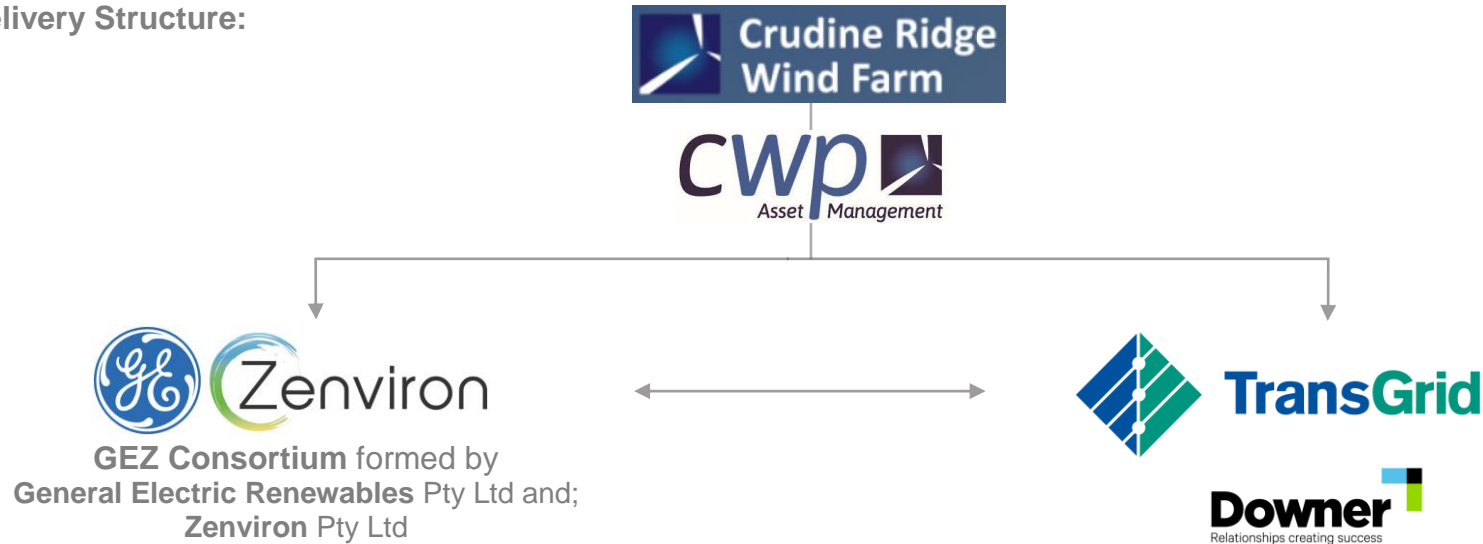
For further information or enquiries, visit the Crudine Ridge Wind Farm website www.crudineridgewindfarm.com.au



Partners Group
REALIZING POTENTIAL IN PRIVATE MARKETS

The CRWF project forms part of the Grassroots Renewable Energy Platform, an energy investment portfolio owned by **CWP Renewables** and **Partners Group**.

CRWF Delivery Structure:



Key Contacts:

- | | | | |
|----------------------------------|----------------|-------------------|--|
| • CWP Site Representative | Scott Pagett | Mob: 0407 913 432 | scott.pagett@cwprenewables.com |
| • GEZ Site Manger | Dallas Edwards | Mob: 0499 563 677 | dredwards@zenviron.com |
| • GEZ Civil Construction Manager | Dayne Stoneman | Mob: 0436 665 013 | dstoneman@zenviron.com |
| • GEZ Consortium Manager | Chris Tanti | Mob: 0403 956 029 | ctanti@zenviron.com |

