

APPENDIX 6

Project Layout and Transport Route Maps

Crudine Ridge Wind Farm Pty Ltd

Figure 3.1A: Crudine Ridge Wind Farm – Layout Option A

Figure 3.2A: Crudine Ridge Wind Farm – Layout Option B

Figure 3.3A: Layout Option A and B – Pyramul Cluster

Figure 3.5A: Layout Option A and B – Sallys Flat Cluster

Figure A: Identification of buildings and residences in proximity to the Project

Figure 1: Aarons Pass Road –

Road upgrade and passing bay works identified for OM / OS vehicles

Figure 2: Aarons Pass Road 0 – 5 km - Proposed road upgrades and passing bays

Figure 3: Aarons Pass Road 5 – 10 km – Proposed road upgrades and passing bays

Figure 4: Aarons Pass Road 10 – 15 km – Proposed road upgrades and passing bays

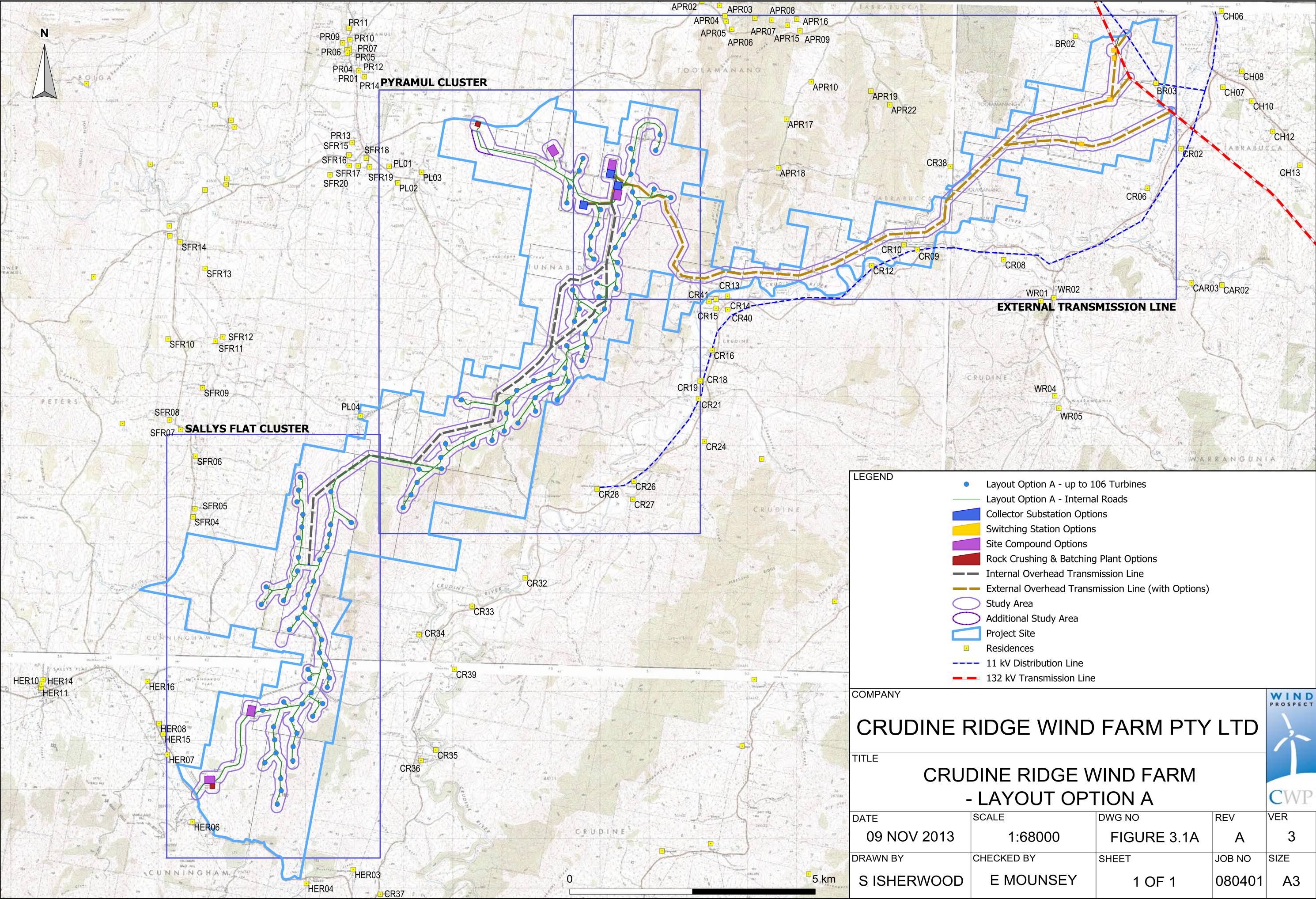
Figure 5: Aarons Pass Road 15 – 20 km – Proposed road upgrades and passing bays

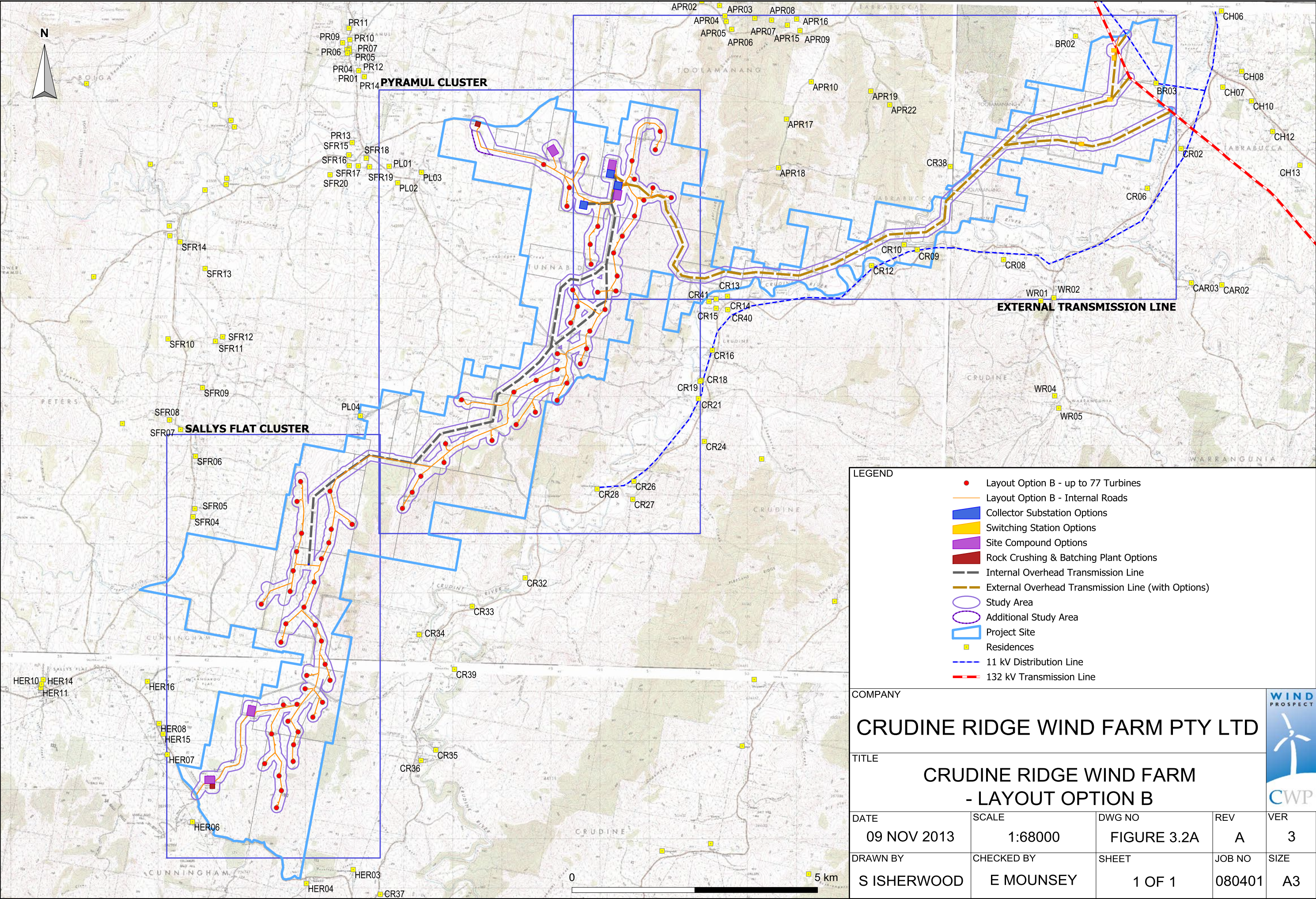
Figure 6.1: Proposed over-dimensional vehicle route options for Project construction

Figure 6.2: Proposed over-dimensional vehicle route options, Gulgong

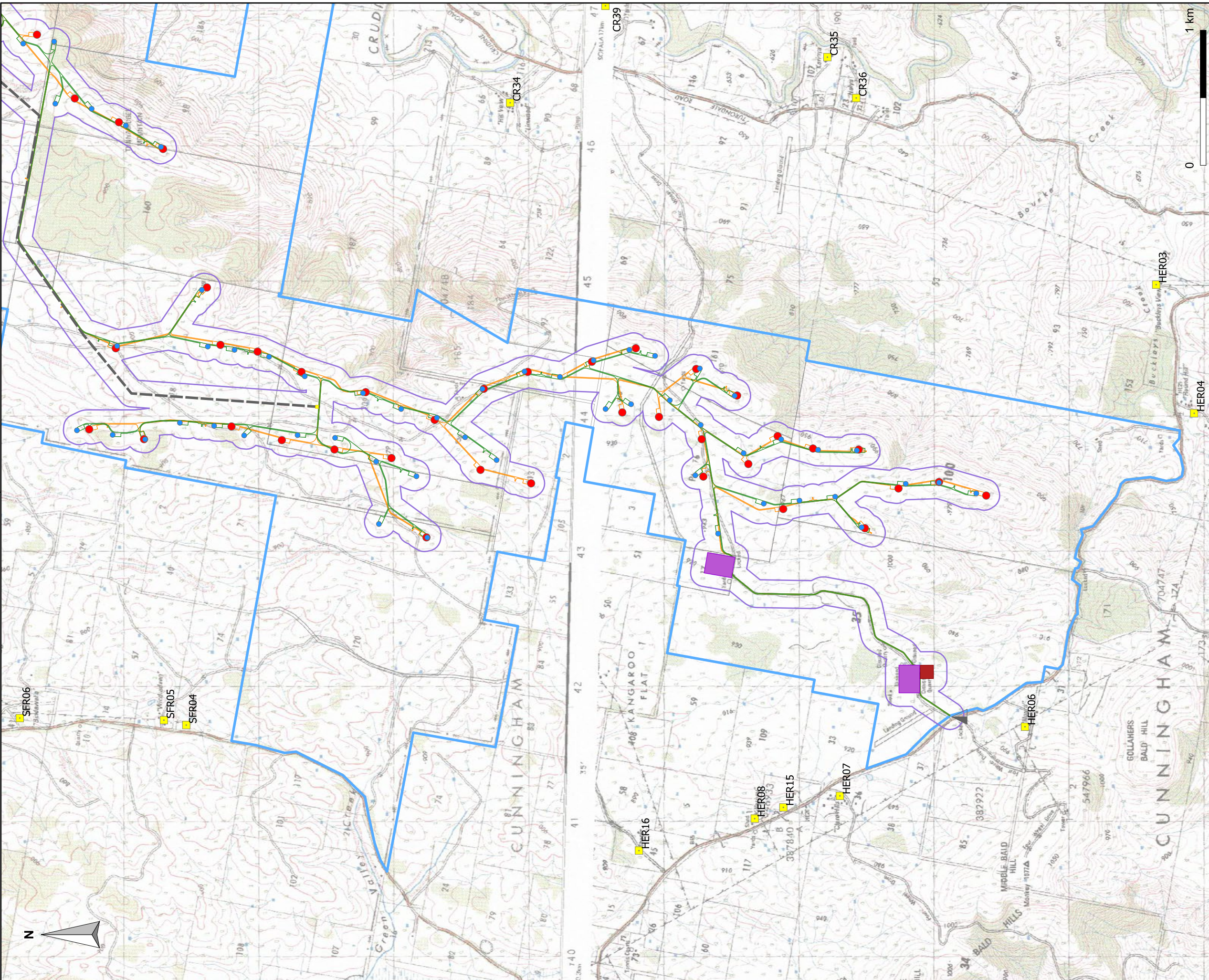
Figure 6.3: Proposed over-dimensional vehicle route options, Mudgee

Figure 6.4: Proposed standard heavy vehicle route options for Project construction

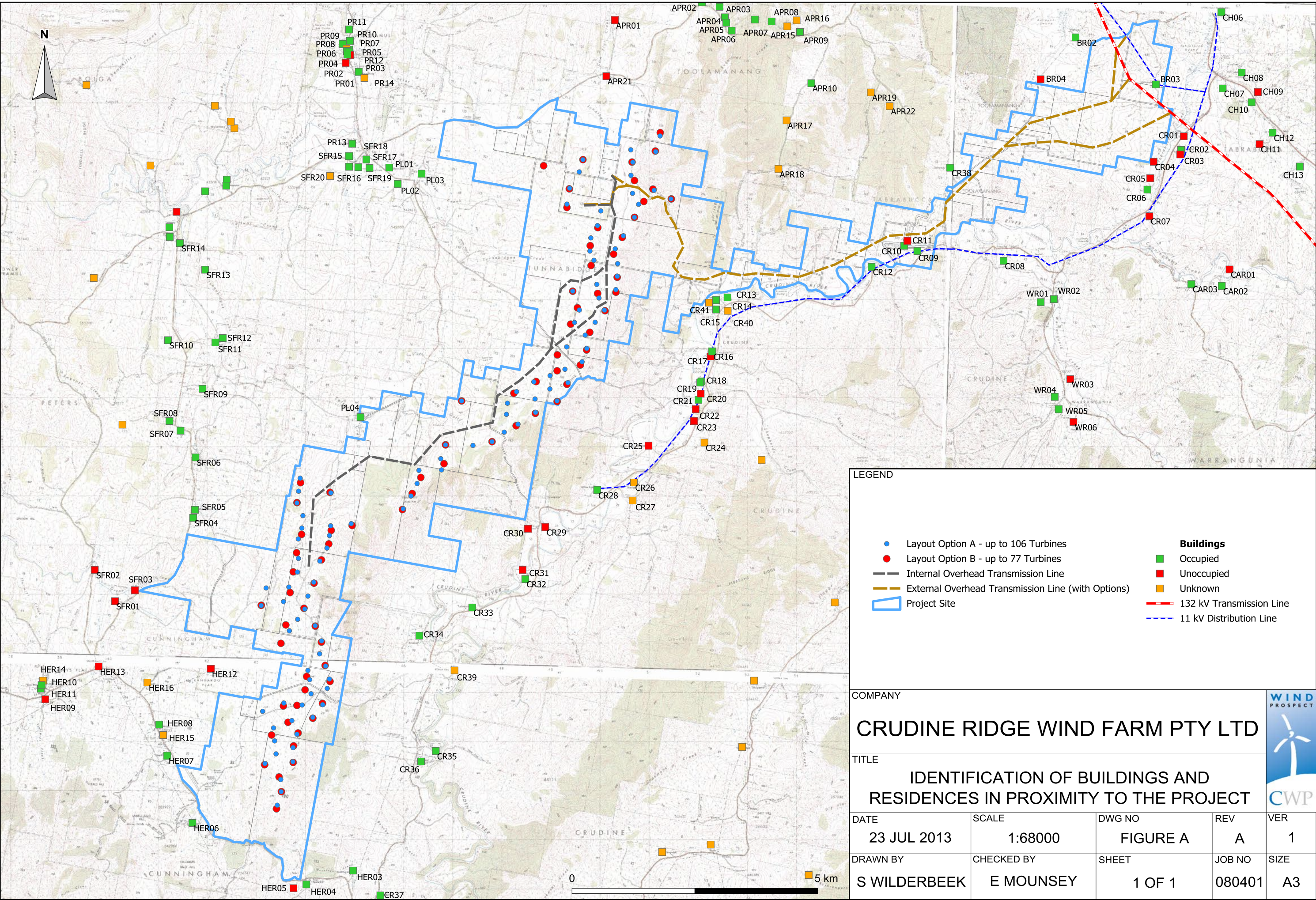


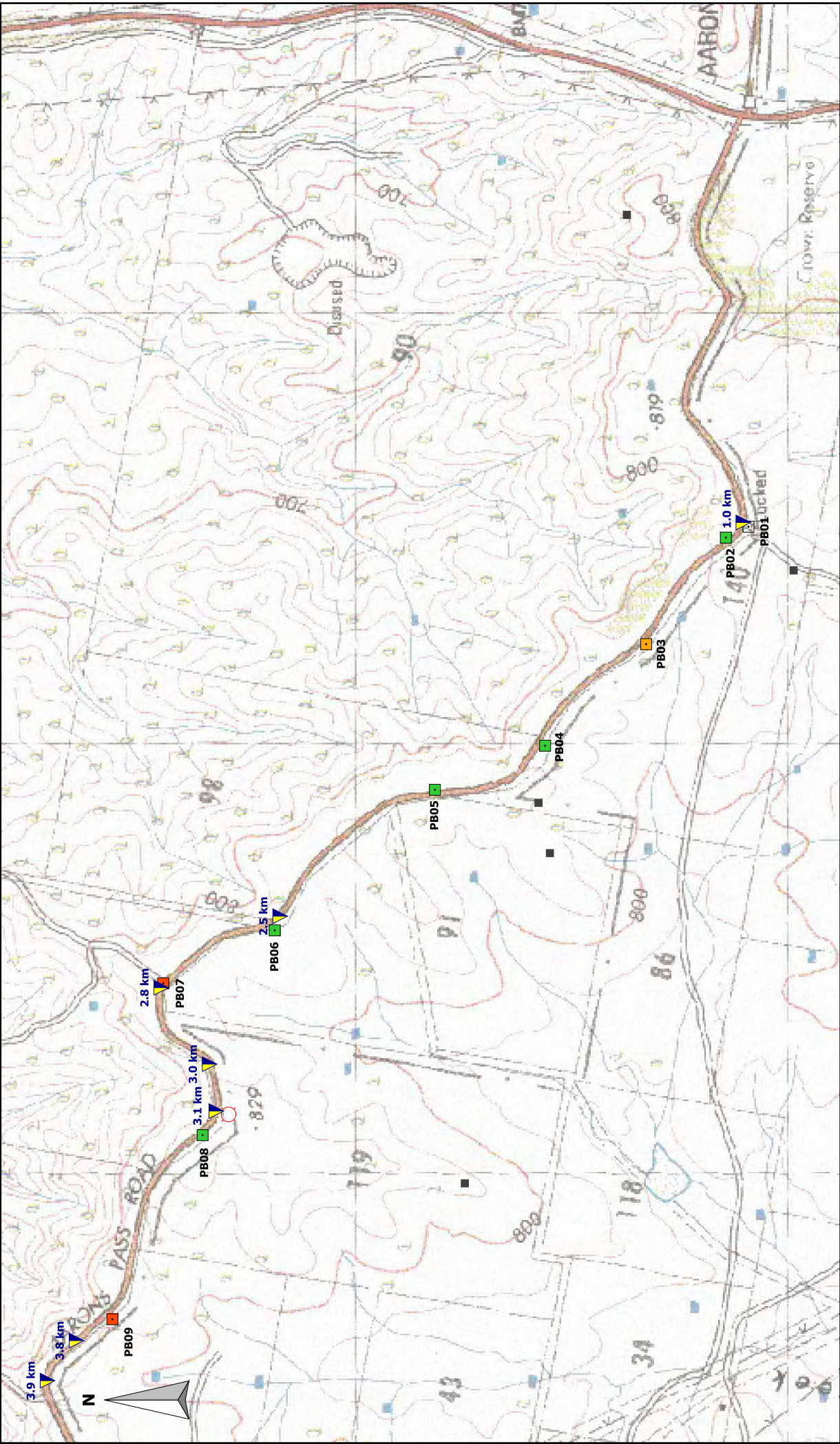


This topographic map depicts the Tunnabidgee Creek area, showing a complex network of land parcels, water bodies, and infrastructure. The map includes contour lines, a north arrow, and a scale bar. Key features include Jonathans Creek, Tunnabidgee Creek, and Long Gully. Various points of interest are marked with labels such as CR14, CR41, CR15, CR16, CR18, CR19, CR21, CR24, CR26, CR27, CR28, PL01, PL02, PL03, SFR18, and SFR19. The map also shows a network of roads and a railway line.

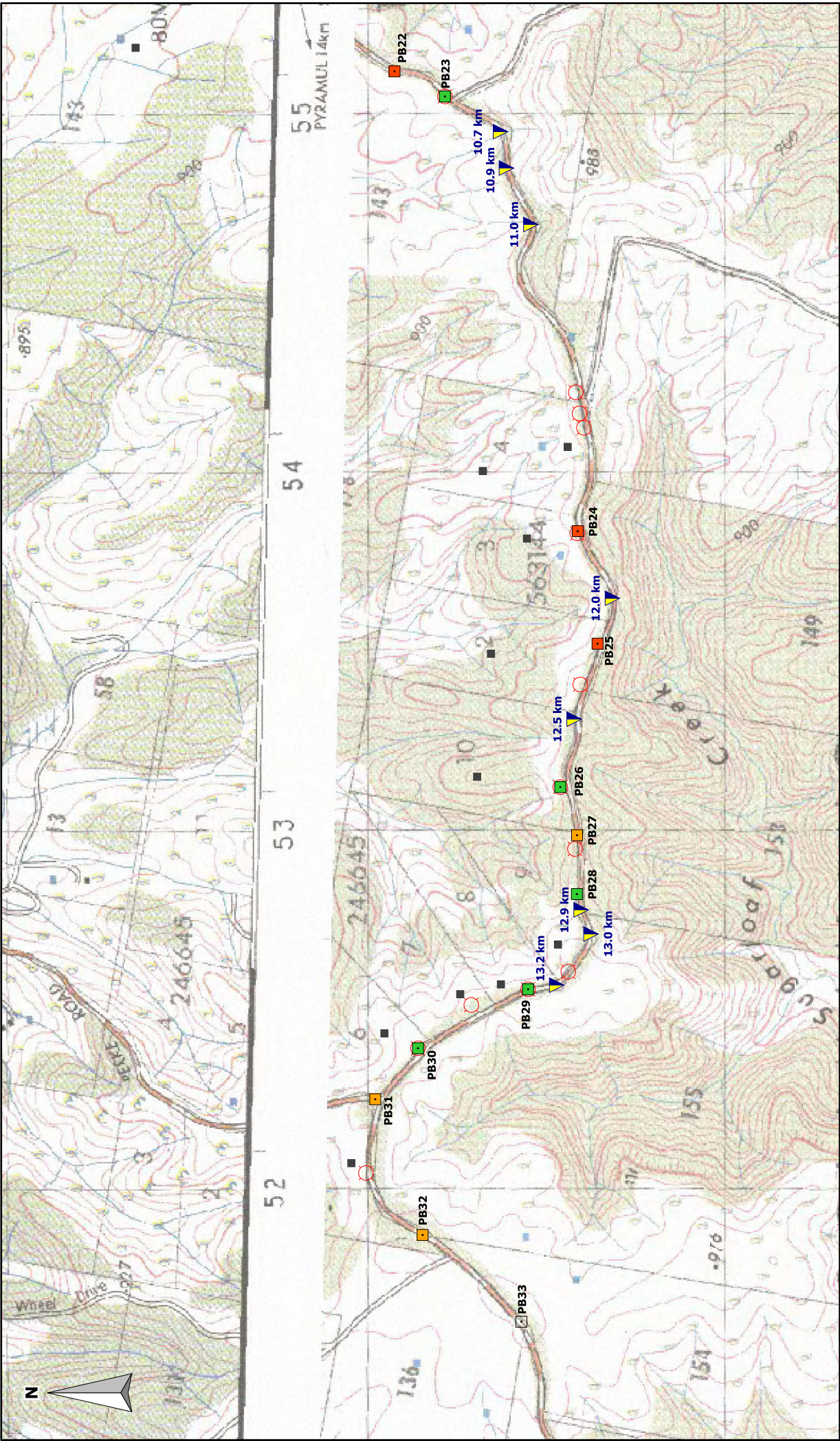


<p>LEGEND</p> <div> <div> ● Layout Option A - up to 106 Turbines ● Layout Option B - up to 77 Turbines </div> <div> — Layout Option A - Internal Roads — Layout Option B - Internal Roads </div> <div> Secondary Collector Substation <div style="margin-left: 20px;"> Site Compound Options Rock Crushing & Batching Plant Options </div> </div> </div> <div style="margin-top: 10px;"> <p>(Located at the southern terminal of the Internal Overhead Transmission Line)</p> <div> <div> Southern Site Access Point Internal Overhead Transmission Line </div> <div> Study Area Project Site Residences </div> </div> </div>		<p>COMPANY</p> <p style="text-align: center; font-size: 1.2em; font-weight: bold;">CRUDINE RIDGE WIND FARM PTY LTD</p>			
		<p>TITLE</p> <p style="text-align: center; font-weight: bold;">LAYOUT OPTION A AND B SALLYS FLAT CLUSTER</p>			
<p>DATE</p> <p>09 NOV 2013</p>	<p>SCALE</p> <p>1:27000</p>	<p>DWG NO</p> <p>FIGURE 3.5A</p>	<p>REV/VER</p> <p>A4</p>		
<p>DRAWN BY</p> <p>S ISHERWOOD</p>	<p>CHECKED BY</p> <p>E MOUNSEY</p>	<p>SHEET</p> <p>1 OF 1</p>	<p>JOB NO</p> <p>080401</p>	<p>SIZE</p> <p>A3</p>	

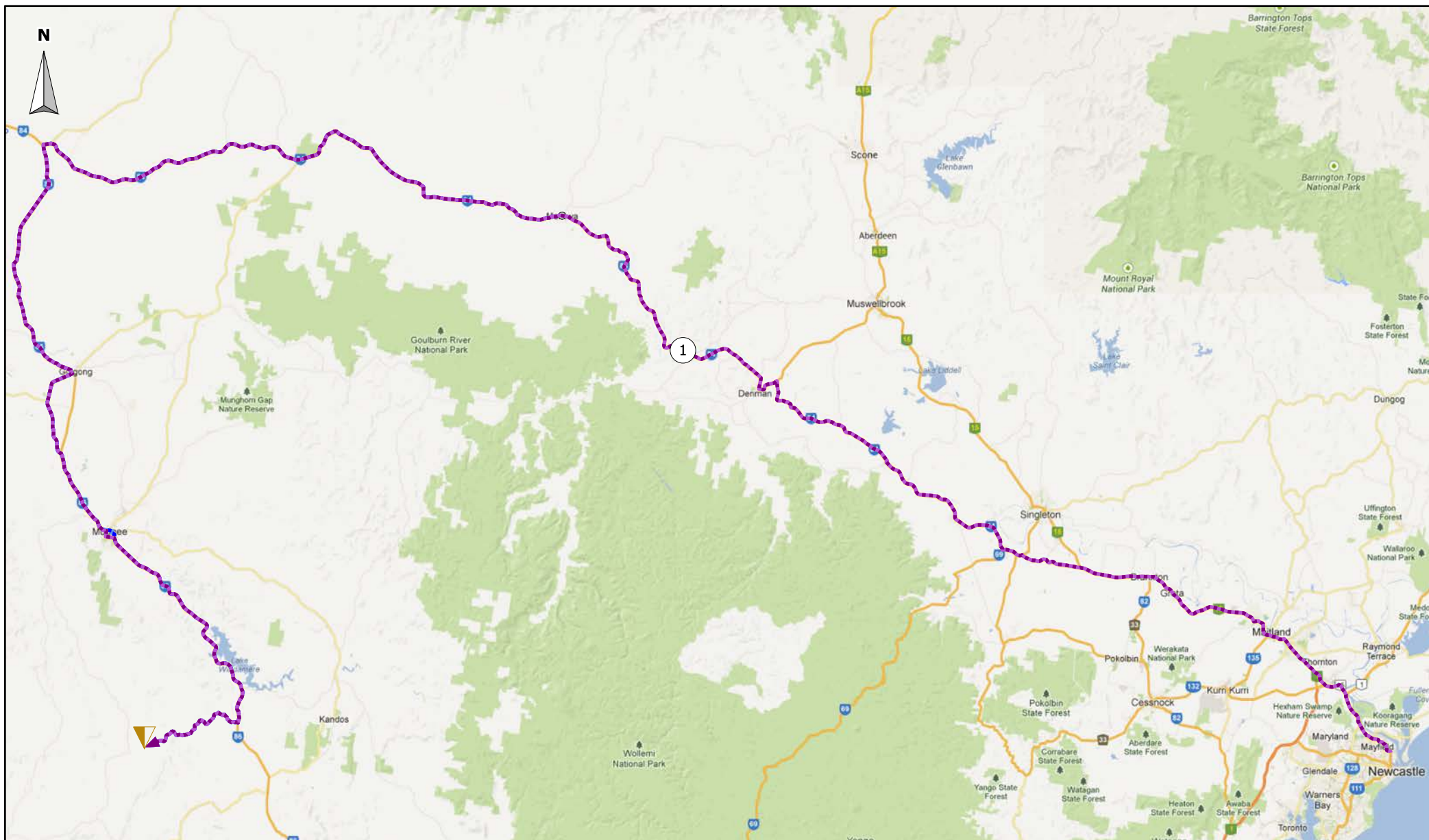




LEGEND	COMPANY										CRUDINE RIDGE WIND FARM PTY LTD									
	TITLE										FIGURE 2: AARONS PASS ROAD 0 - 5 KM									
	PROPOSED ROAD UPGRADES AND PASSING BAYS										PROPOSED ROAD UPGRADES AND PASSING BAYS									
	DATE		22 JUL 2013		SCALE		1:12000		DWG NO		CRU132		REV		A		VER		3	
	DRAWN BY		S ISHERWOOD		CHECKED BY		E MOUNSEY		SHEET		1 OF 1		JOB NO		080401		SIZE		A4	
SCALE BAR										0 1 km										
Background imagery: derived from GEODATA Topo250K; All other data: WPCWP																				
Proposed Road Works										Potential Passing Bay Options										
Road works recommended										Grade 1: Very good										
										Grade 2: Good										
										Grade 3: Average										
										Removed on detailed assessment										



LEGEND	COMPANY		CRUDINE RIDGE WIND FARM PTY LTD		WIND PROJECT		
	TITLE		FIGURE 4: AARONS PASS ROAD 10 - 15 KM		CWP		
	PROPOSED ROAD UPGRADES AND PASSING BAYS				VER		
	DATE		22 JUL 2013		REV		
SCALE BAR	DRAWN BY		S ISHERWOOD		JOB NO		
					080401		
					SHEET		
					1 OF 1		
Proposed Road Works		Potential Passing Bay Options		Building			
Road works recommended		Grade 1: Very good		Gateway access to residence			
		Grade 2: Good					
		Grade 3: Average					
		Removed on detailed assessment					



LEGEND

Over-Dimensional Vehicle Route Options

Route Option 1

Route Option 2

(see Figure 6.3 for Route Option 2)

The Project

Northern Site Access Point



Background imagery: Google Maps; All other data: Google Maps, WPCWP

COMPANY

CRUDINE RIDGE WIND FARM PTY LTD

TITLE

**FIGURE 6.1: PROPOSED OVER-DIMENSIONAL
VEHICLE ROUTE OPTIONS FOR PROJECT CONSTRUCTION**

DATE

09 NOV 2013

SCALE

1:820000

DWG NO

FIGURE 6.1

REV

A

VER

1

DRAWN BY

S ISHERWOOD

CHECKED BY

E MOUNSEY

SHEET

1 OF 1

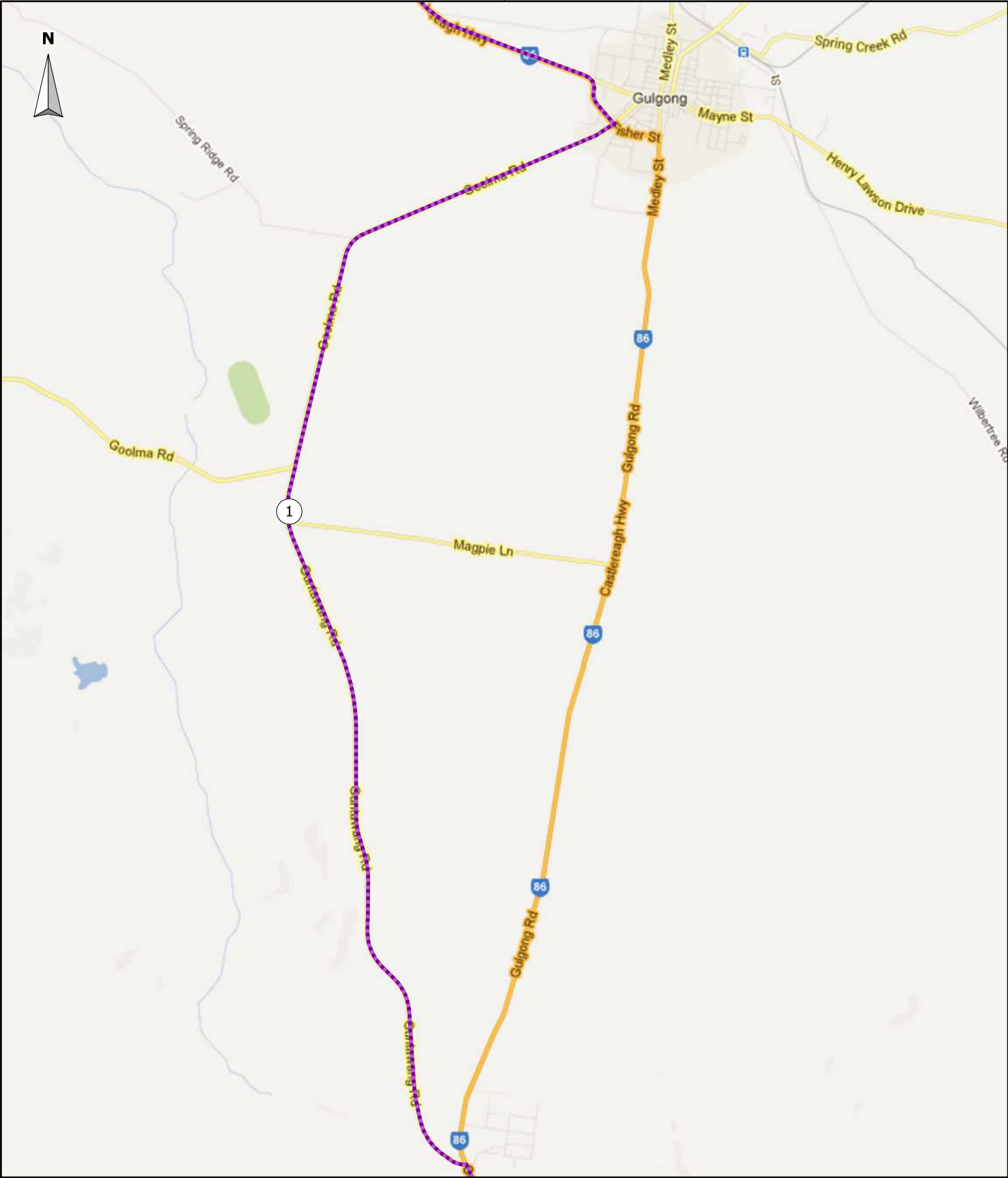
JOB NO

080401

SIZE

A4



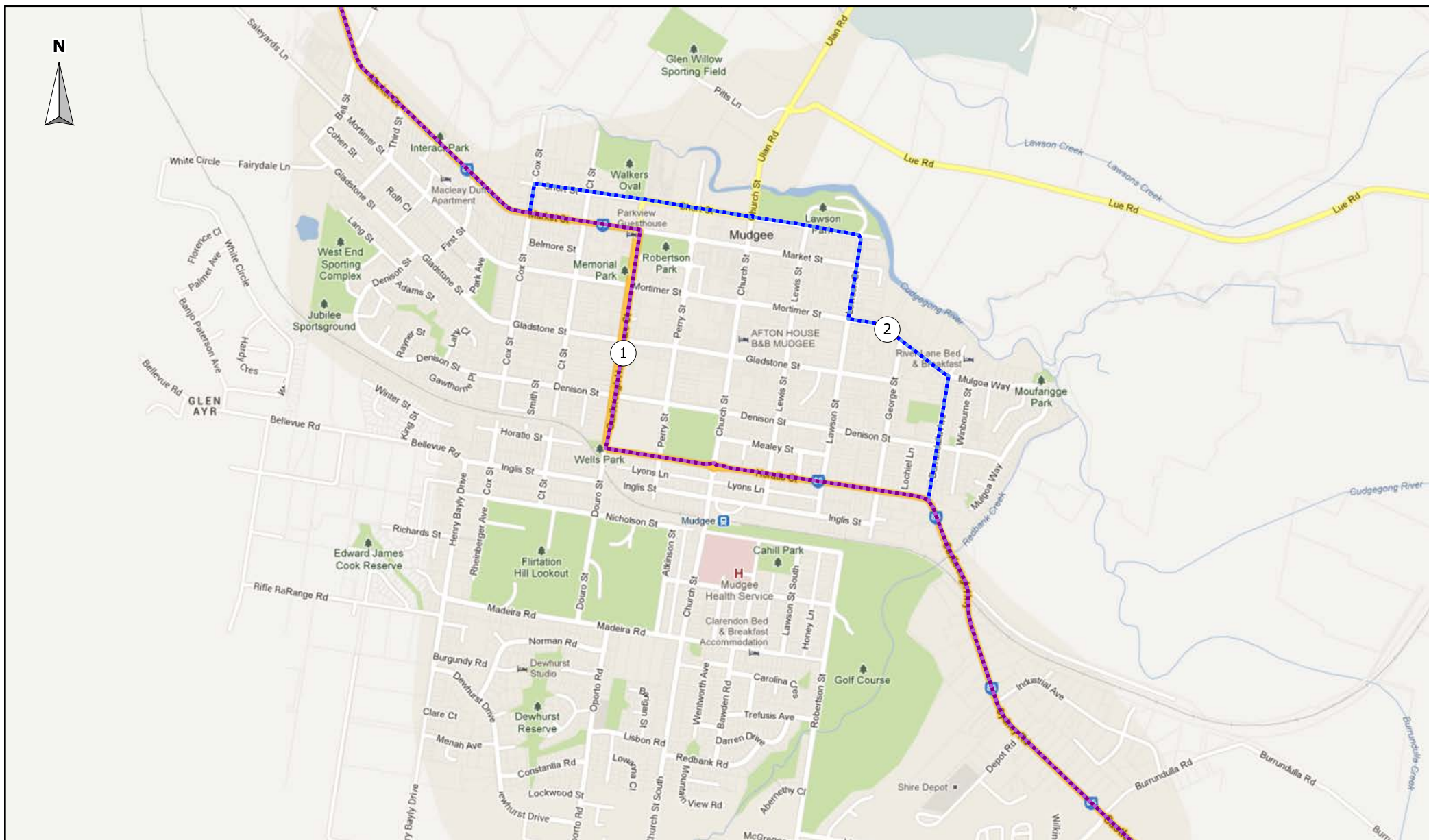


<div>LEGEND</div> <div><div>Over-Dimensional Route Options</div><div>Route Option 1</div></div>	<div>COMPANY</div> <div>CRUDINE RIDGE WIND FARM PTY LTD</div>				
	<div>TITLE</div> <div>FIGURE 6.2: PROPOSED OVER-DIMENSIONAL VEHICLE ROUTE OPTIONS, GULGONG</div>				
	<div>DATE</div> <div>09 NOV 2013</div>	<div>SCALE</div> <div>1:63000</div>	<div>DWG NO</div> <div>FIGURE 6.2</div>	<div>REV</div> <div>A</div>	<div>VER</div> <div>1</div>
	<div>DRAWN BY</div> <div>S ISHERWOOD</div>	<div>CHECKED BY</div> <div>E MOUNSEY</div>	<div>SHEET</div> <div>1 OF 1</div>	<div>JOB NO</div> <div>080401</div>	<div>SIZE</div> <div>A4</div>

Background imagery: Google Maps; All other data: Google Maps, WPCWP

WIND PROSPECT

CWP



LEGEND

Over-Dimensional Route Options

- Route Option 1
- Route Option 2

Background imagery: Google Maps; All other data: Google Maps, WPCWP

COMPANY

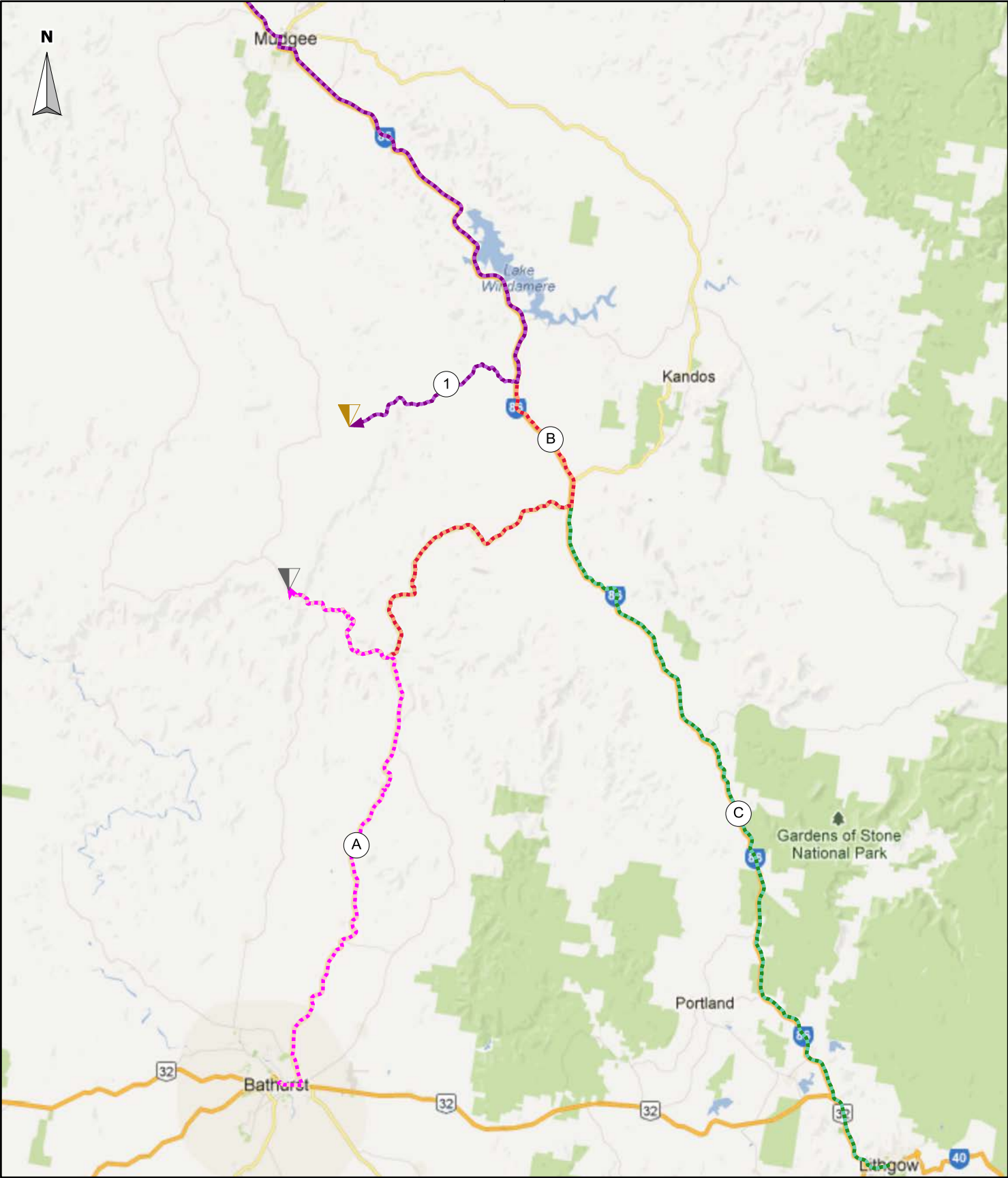
CRUDINE RIDGE WIND FARM PTY LTD

TITLE

**FIGURE 6.3: PROPOSED OVER-DIMENSIONAL
VEHICLE ROUTE OPTIONS, MUDGEE**

DATE	09 NOV 2013	SCALE	1:16500	DWG NO	FIGURE 6.3	REV	A	VER	1
DRAWN BY	S ISHERWOOD	CHECKED BY	E MOUNSEY	SHEET	1 OF 1	JOB NO	080401	SIZE	A4





LEGEND

Standard Heavy Vehicle Route Options

Route A

Route B

Route C

Route Option 1

The Project

Northern Site Access Point

Southern Site Access Point

Background imagery: Google Maps; All other data: Google Maps, WPCWP

COMPANY				
CRUDINE RIDGE WIND FARM PTY LTD				
TITLE				
FIGURE 6.4: PROPOSED STANDARD HEAVY VEHICLE ROUTE OPTIONS FOR PROJECT CONSTRUCTION				
DATE	SCALE	DWG NO	REV	VER
09 NOV 2013	1:450000	FIGURE 6.4	A	1
DRAWN BY	CHECKED BY	SHEET	JOB NO	SIZE
S ISHERWOOD	E MOUNSEY	1 OF 1	080401	A4

