



# Gol Gol Renewable Energy Projects

Project overview

Squadron Energy

Project map

Next steps

## Gol Gol wind, solar and battery projects

Squadron Energy is investigating potential wind, solar and battery projects approximately 10km north of Buronga and 12km north of Mildura, in NSW.



The proposed **Gol Gol Wind Farm** will include up to 120 wind turbines approximately 280 m in height with an overall proposed capacity of 840 megawatts (MW).



**Gol Gol Solar Farm** has an approximate footprint of 1,200 hectares and will have a capacity of up to 600MW.



**Gol Gol Battery** will be a 1,500 MW battery that lasts for 8 hours. The project will be completed in two stages.

The location is well suited to renewable energy projects due to a reliable wind and solar resource, low density of residential dwellings, as well as its proximity to Project Energy Connect, the existing 220 kV transmission line and TransGrid's Buronga substation which is currently undergoing a large expansion.

## Squadron Energy

Squadron Energy is Australia's leading renewable energy company that develops, operates and owns renewable energy assets in Australia.

We are 100% Australian owned and have 1.1 gigawatts (GW) of renewable energy in operation and 900MW under construction.

With proven experience and expertise across the project lifecycle, we work with local communities and our customers to lead the transition to Australia's clean energy future.



# South West NSW Renewable Energy Zone

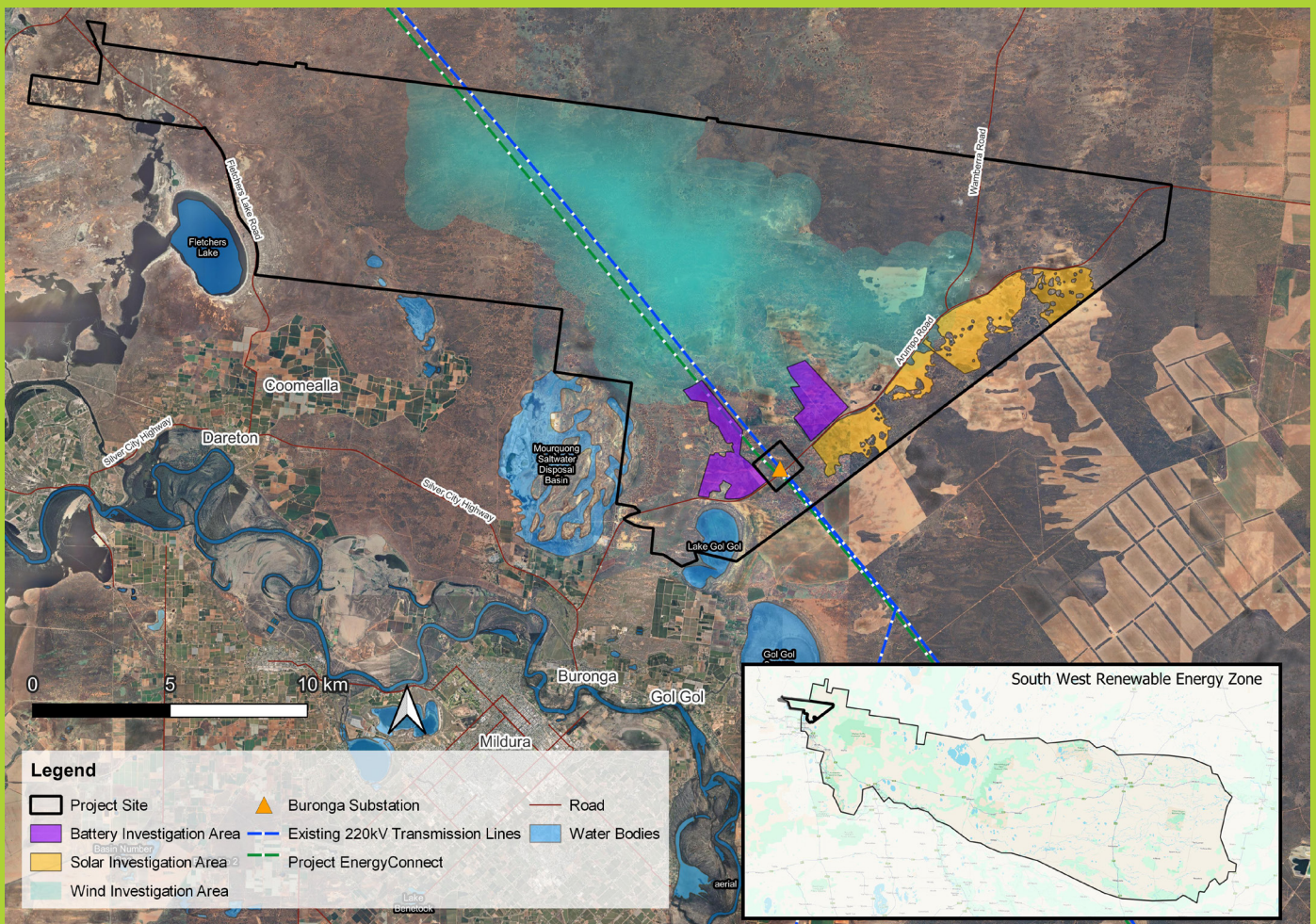
The proposed project site is within the NSW South West Renewable Energy Zone (REZ). A REZ involves the coordinated development of new grid infrastructure in energy rich areas to connect multiple renewable energy generators (such as solar and wind farms) in the same location.

The designation of a REZ by the NSW Government is intended to result in the development of additional capacity for renewable electricity generation, producing low-cost power for NSW homeowners and business, driving down carbon emissions within the electricity generation sector, and importantly, driving job growth and employment opportunities through enabling significant investment into the regions.

For more information on the South West REZ, including an indicative location, visit:  
<https://www.energyco.nsw.gov.au/sw-rez>



## Investigation area



# Development process and next steps

The investigation areas for Gol Gol wind, solar and battery projects are on freehold privately owned land north of Buronga, Gol Gol and Mildura.

The selection of project locations involves a combination of desktop searches, physical investigations and, fundamentally, landowner interest and community support.

The Gol Gol wind, solar and battery projects are in the early stages of development with a separate Scoping Report being prepared for each component. This is the first stage of the NSW State Significant Development approval process. We are carrying out preliminary studies and community engagement to inform the report and project design.

## Environmental assessment process



## Local and regional benefits

Renewable energy development can provide substantial benefits to a local and regional community through direct employment, community investment and significant flow-on effects for the region.

Squadron Energy is committed to sharing the value and benefits of our projects by supporting communities over the long term. We do this through opportunities such as co-investment, planning agreements with local councils, community sponsorships and grant initiatives, and other regional benefit initiatives.

We recognise each community is different and through consultation and partnerships with councils, communities and local groups, we tailor benefits at each project to make positive lasting local contributions.

Visit [squadronenergy.com/community](https://squadronenergy.com/community) or get in touch with the project team to find out more about the benefit sharing opportunities.

## Community Drop-In Session

Early community consultation is key to developing a considered project. Please join us at our community drop in session or contact us on the details below to provide feedback.

**7/ When:**  
Wednesday 20 March  
2pm - 7pm

**7/ Location:**  
Midway Centre  
6 Midway Drive  
Buronga NSW 2739

**RSVP is not required**  
Please contact us if you would like more information.



## Contact us

**David Stanke - Project Manager**

Phone: 1800 095 669

Email: [info@golgolwindfarm.com.au](mailto:info@golgolwindfarm.com.au)

PO Box 1708, Newcastle NSW 2300

[squadronenergy.com](https://squadronenergy.com)