



# JEREMIAH WIND FARM

PROJECT UPDATE

COMMUNITY  
SPONSORSHIPS

RECENT  
ACTIVITIES

NEXT STEPS

## PROJECT UPDATE

The Jeremiah Wind Farm team have been continuing engagement with the local community and other stakeholders, while progressing the project's Environmental Impact Statement (EIS).

As part of the EIS process, we have completed detailed studies in a range of areas, such as traffic, biodiversity, visual impact and heritage. We expect to formally lodge the EIS with the Department of Planning and Environment (DPE) in early 2023.

The proposed Jeremiah Wind Farm consists of up to 65 wind turbine generators, battery storage and associated infrastructure on agricultural land approximately 25 km east of Gundagai, NSW. The project is expected to have a generating capacity of approximately 400 MW.

A Scoping Report was lodged with DPE in July 2021. The Secretary's Environmental Assessment Requirements (SEARs) for the EIS were issued in late September 2021.



EXPECTED  
CAPACITY



EXPECTED HOMES  
POWERED

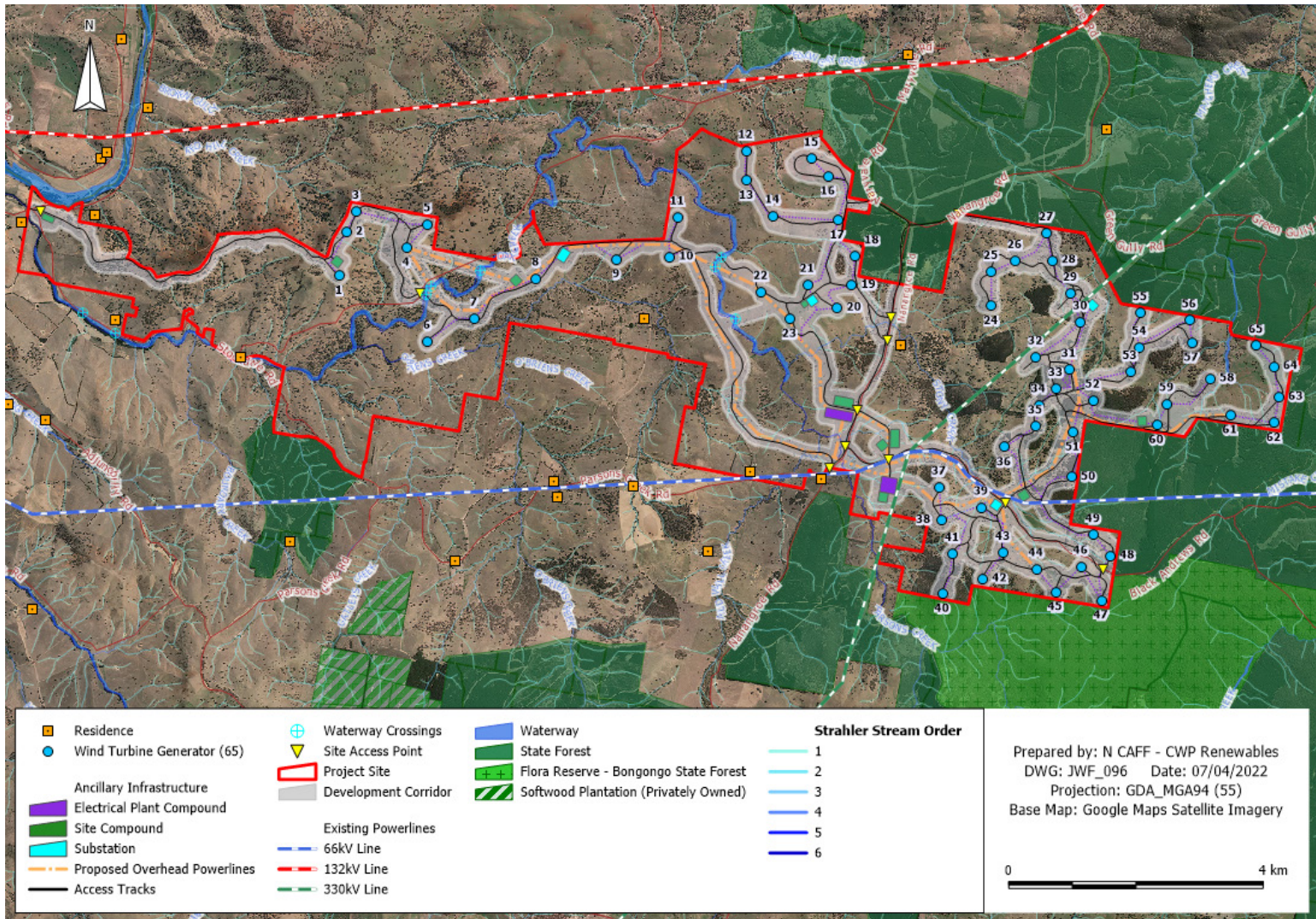


EXPECTED TONNES OF  
EMISSIONS AVOIDED



EXPECTED JOBS  
TO BE CREATED

# PROJECT LAYOUT MAP



## CHRISTMAS SPONSORSHIP

CWP Renewables is again calling on community groups and charities to apply for support in a special Christmas round of sponsorship.

Last year CWP Renewables supported \$30,000.00 in Christmas sponsorships to regional communities. This year, we've increased the sponsorship pool to **\$40,000.**

Christmas sponsorship requests are welcome by Friday 11 November 2022 in all local government areas of CWP Renewables projects, including Cootamundra-Gundagai Regional Council.

For more information and how to apply, please visit our website:

[www.cwprenewables.com/  
communitysponsorship](http://www.cwprenewables.com/communitysponsorship)



# COMMUNITY SPONSORSHIP PROGRAM

The Jeremiah Wind Farm Community Sponsorship Program is open to provide funding or in-kind support to local community organisations and/or community-based activities, events and initiatives.

The initiatives supported to date by Jeremiah Wind Farm include:

- Bongongo Public School: a new ride-on mower to maintain the school and public grounds
- The Tumut Bulls: funding towards a new scoreboard
- The Crawford Angus Charity Camp Draft: event sponsor
- Local radio station Sounds of the Mountains: sponsoring the community lost and found program
- Coolac Cricket Club: major club sponsor
- The Tumut Off Grid Throw Down: event sponsor
- Flourish Tumut: musical and exercise equipment

The Community Sponsorship Program Guidelines and Application Form are available at: [www.cwprenewables.com/communitysponsorship](http://www.cwprenewables.com/communitysponsorship)



## RECENT ACTIVITIES

### Community Consultative Committee

Between October 2021 to May 2022 expressions of interests for Community Consultative Committee (CCC) membership were sought from the community via an extensive campaign. However, very few applications were received.

Due to the lack of respondents, the independent chair, Mr Gordon, recommended, and DPE agreed, that there was no need to establish a CCC for Jeremiah Wind Farm at this stage.

CWPR continues to consult directly with the community and will likely establish a CCC in the future.

### Accommodation Expressions of Interest

We are compiling a register of local accommodation opportunities that are available, or will become available, during the development, construction, and operation of the wind farm.

Landowners and local businesses are encouraged to register their interest in supplying accommodation using this form.

Please visit our website and fill in the form for each accommodation opportunity if you have more than one.



[www.cwprenewables.com/housing-eoi-jwf](http://www.cwprenewables.com/housing-eoi-jwf)

### Local Contractor Expressions of Interest

Local contractors and service providers interested in participating in the construction of the Jeremiah Wind Farm are encouraged to register their interest for supplying goods and services during construction and operation of the wind farm by visiting our website and completing the form.

[www.cwprenewables.com/contractors-jwf](http://www.cwprenewables.com/contractors-jwf)



# Community Consultation

The project team continue to engage with the community and welcome feedback regarding the project. We thank everyone who came along to the Community Drop-In Sessions in May 2022 at the Adjungbilly Community Hall and those that have otherwise met with us, spoke with us over the phone or email, providing valuable input on the project.

If you were unable to attend or are interested in viewing the project material again, please visit our [virtual consultation room](#).



## NEXT STEPS

### Environmental Impact Statement

An Environmental Impact Statement (EIS) is currently being prepared for the project in accordance with the NSW Wind Energy Framework. The EIS is expected to be released for public exhibition in early 2023. Public submissions on the EIS are welcomed and the community will be notified once it is released.



CWP Renewables is committed to ongoing dialogue with the community and project stakeholders. Please feel free to get in touch with us if you have questions or would like further information.

## CONTACT US

**JESSICA PETERSEN** – Project Manager  
Phone: 0405 152 188  
Email: [info@jeremiahwindfarm.com.au](mailto:info@jeremiahwindfarm.com.au)  
PO Box 1708, Newcastle NSW 2300

**THOMAS BEHRENDT** – Senior Project Developer  
Phone: 0404 870 322

[cwprenewables.com](http://cwprenewables.com)