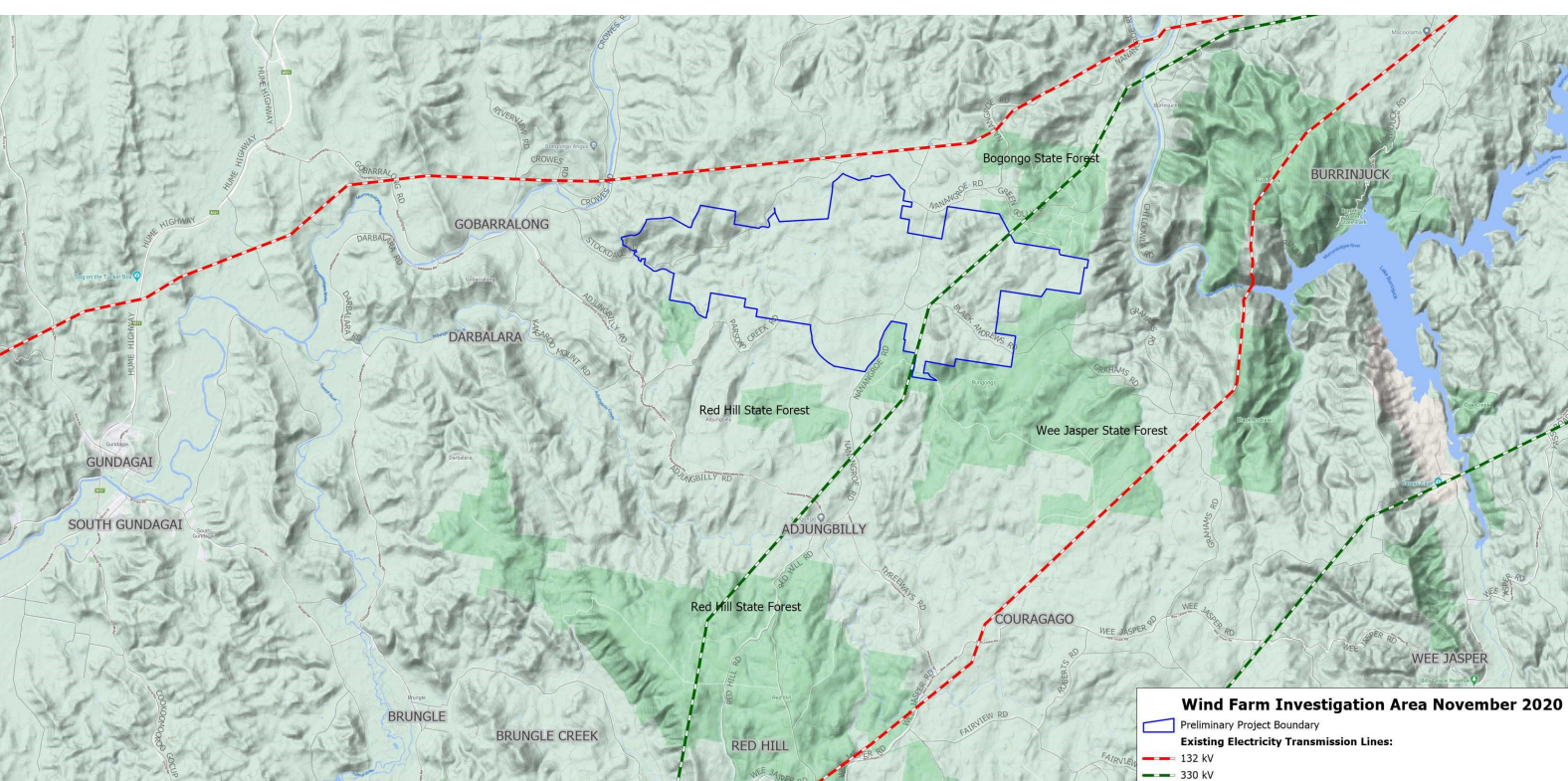


## Wind Farm Development Proposal

CWP Renewables are investigating a potential wind farm development located approximately 25 km east of Gundagai toward the Burrinjuck Dam in the South West Slopes of NSW. We believe the site is well suited to wind generation due to a reliable wind resource, low density of rural residential dwellings and proximity to existing transmission infrastructure. The study area sits entirely within the Cootamundra-Gundagai Regional Council (CGRC) and borders the Bungongo State Forest.



## About CWP Renewables

CWP Renewables is a leading renewable energy developer, owner and asset manager with full project life-cycle expertise. Our team holds a wealth of experience in the renewable energy sector, accumulated through the successful delivery of projects in Europe and Australia.

We develop and own utility-scale renewable energy facilities incorporating wind, solar and storage technologies, oversee project delivery and commissioning, and provide long-term operational asset management services. Our unique approach to own and manage each project from inception through to full operation ensures genuine engagement with all stakeholders at every stage of development.

*CWP Renewables has been developing projects in Australia since 2007. Key development activities are coordinated from our offices in Newcastle and Sydney, with asset management services delivered from Canberra.*

## Current Activities and Next Steps

Over the last decade, CWP Renewables has developed relationships with landholders in the area, as well as gathered long term wind data. We are now at a point where we can assess the feasibility of the wind farm in more detail.

The next steps of the investigation will include on-going engagement with the community to understand community views and gather feedback which will help inform the initial wind farm layout.

We will also begin additional assessments including visual, noise and environmental impact studies. This information will help refine the wind farm proposal prior to submitting a development application.

The Wind Farm Development will follow the guidelines in the NSW Wind Energy Framework. For more information visit the website below:

<https://www.planning.nsw.gov.au/Policy-and-Legislation/Renewable-Energy/Wind-Energy-Framework>

On-going consultation with the community will include:

- Face to face meetings with local landowners
- A public drop-in session where members of the community can meet and talk face to face with representatives from CWP Renewables
- Landscape and community values survey will be undertaken with the local community
- A Community Consultative Committee will be established

*The project team will be within the area regularly to answer questions and understand community views. Please get in touch using the contact details below.*

## Local and regional benefits of a wind farm development

The wind farm development aims to provide several benefits to the local community and beyond, including:

- generation of clean energy, reducing Australia's reliance on fossil fuel generation – contributing an important role in reducing global greenhouse gas emissions.
- contribution to the local community and economy through employment and the significant flow on effects for local and regional businesses
- the local community through the community benefits sharing scheme

### Contact Us

Project Officer: Jessica Petersen

Phone: +61 405 152 188

Email: [info@jeremiahwindfarm.com.au](mailto:info@jeremiahwindfarm.com.au)