



JEREMIAH WIND FARM

THE PROJECT

PLANNING AND
ASSESSMENT

BENEFITS

ABOUT US

THE PROJECT

WELCOME TO THE FIRST
COMMUNITY NEWSLETTER
FOR THE PROPOSED
JEREMIAH WIND FARM,
LOCATED EAST OF
GUNDAGAI IN THE SOUTH
WEST SLOPES OF NSW.

Jeremiah Wind Farm near Adjungbilly is in the early stages of planning. The proposed project currently comprises 65 turbines and battery energy storage. This represents generating capacity of approximately 400 MW, enough to power over 200,000 homes.

The project is expected to bring significant community benefits, jobs and investment to the local and regional economy.

approx.

65

turbines

approx.

400

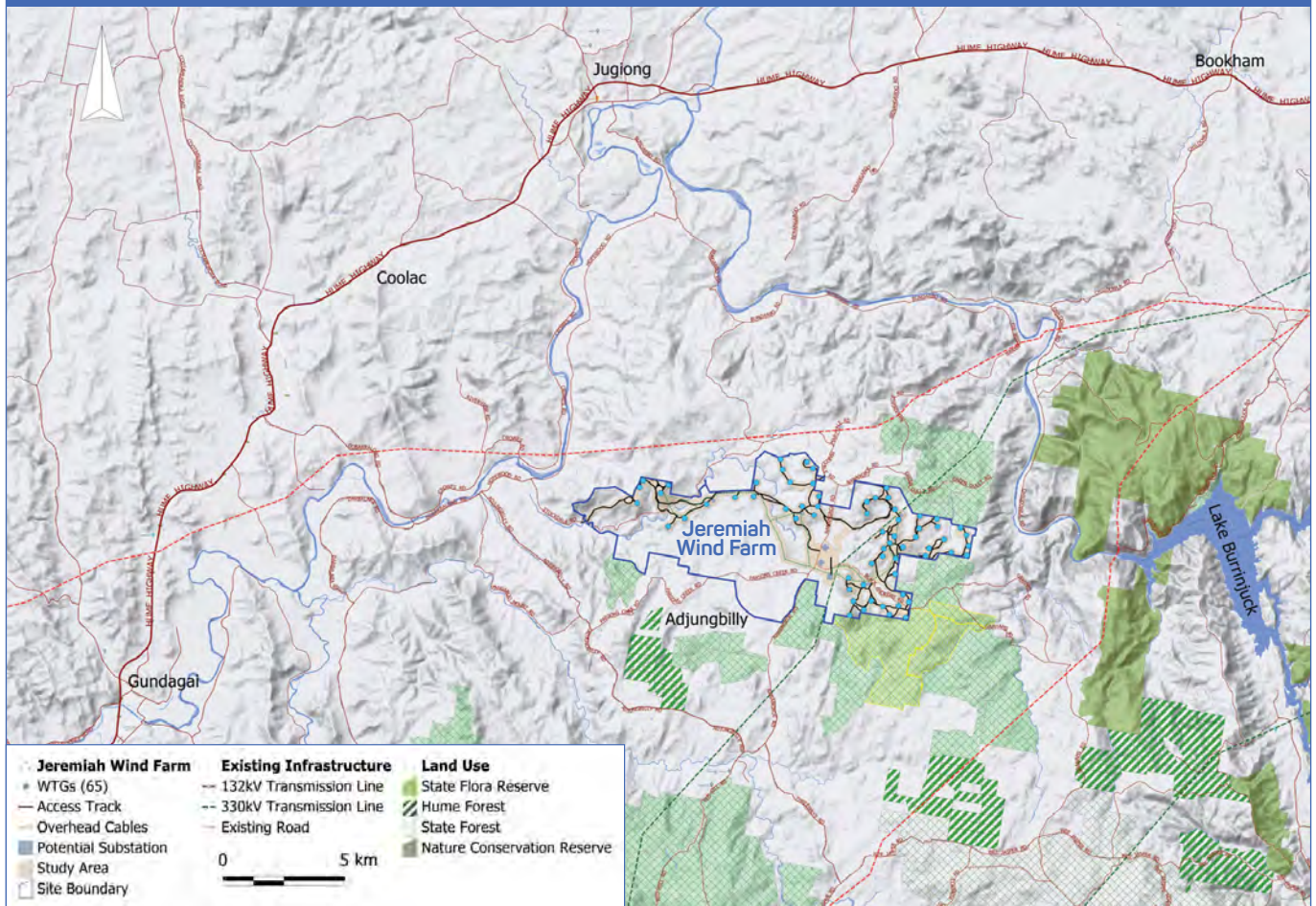
MW

power over

200,000

homes

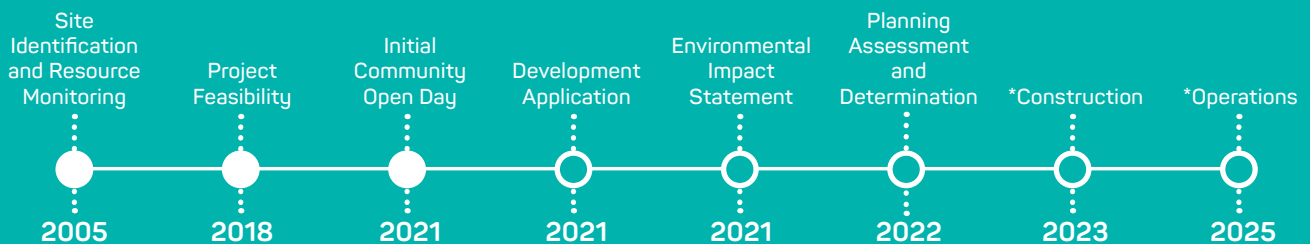
LOCATION



The proposed Jeremiah Wind Farm is located on private land near Adjungbilly in the south-west slopes of NSW. The land proposed for the development is predominantly used for agricultural activities, and adjacent to commercial forestry plantations (both State and private).

The location has a proven wind resource, existing high voltage grid connection opportunities and excellent road access. The project is classified as State Significant Development and will undergo a rigorous planning and impact assessment process with the relevant State and Commonwealth planning departments.

PLANNING AND ASSESSMENT INDICATIVE TIMELINE



*Subject to planning approval

LOCAL AND REGIONAL BENEFITS

A wind farm development can provide substantial benefits to a local and regional community through direct employment, community investment and significant flow-on effects for the region.



CWP Renewables looks to engage local contractors throughout the project life cycle. We aim to connect with local businesses and present them with opportunities to get involved. Please get in touch to register your interest through the Jeremiah Wind Farm website or using the contact details below.

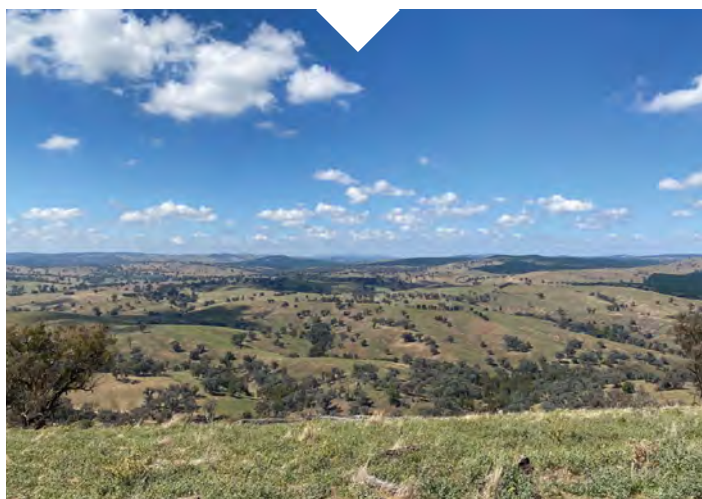


COMMUNITY SURVEY

Community consultation is a key part of the development process and the current focus of our activities. Feedback from the community helps shape the development during the formal planning process.

We are seeking feedback from the local community to better understand the scenic values of the region via a simple questionnaire.

If you would like to participate, please complete the form included in this newsletter and send back to our team via post or email.



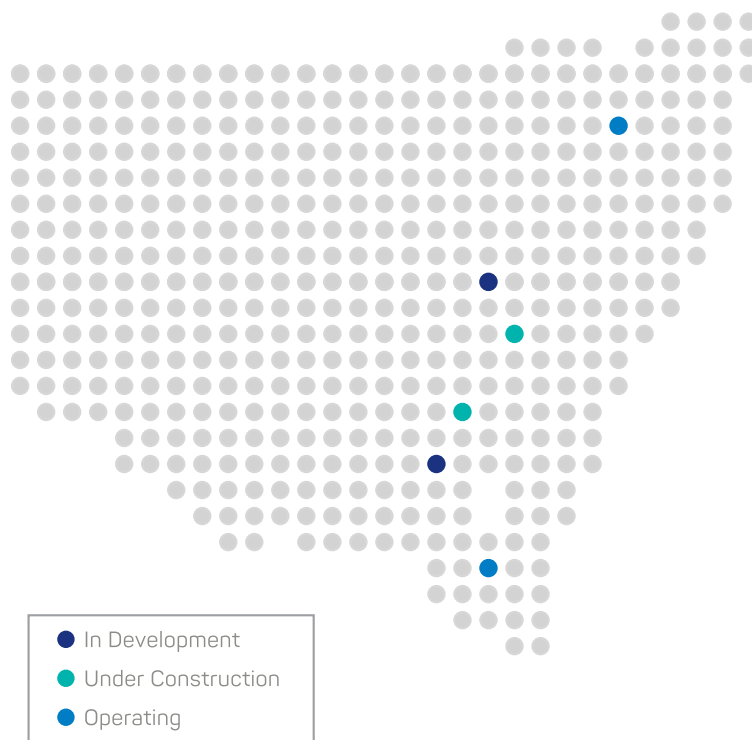
ABOUT CWP RENEWABLES

CWP Renewables is a renewable energy company that develops, operates and owns renewable energy assets in Australia. With proven experience and expertise across the project lifecycle, we work with local communities and our customers to lead the transition to Australia's low-cost, low-emissions energy future.

CWP Renewables has been developing projects in Australia since 2007. Key development activities are coordinated from our offices in Newcastle and Sydney, with asset management services delivered from Canberra.

Our unique approach to own and manage each project from inception through to full operation ensures genuine engagement with all stakeholders at every stage.

CWP Renewables Projects



NOTES

THE JEREMIAH WIND FARM PROJECT TEAM WILL BE IN THE AREA REGULARLY TO ANSWER QUESTIONS AND UNDERSTAND COMMUNITY VIEWS. PLEASE GET IN TOUCH USING THE CONTACT DETAILS BELOW.

CONTACT US

JESSICA PETERSEN – Project Manager
Phone: 0482 097 449
Email: info@jeremiahwindfarm.com.au
PO Box 1708, Newcastle NSW 2300

cwprenewables.com