



JEREMIAH WIND FARM

PROJECT UPDATE
AND NEXT STEPS

LOCATION

COMMUNITY

HAVE YOUR SAY

PROJECT UPDATE

ENVIRONMENTAL ASSESSMENTS AND TECHNICAL STUDIES ARE CONTINUING AT JEREMIAH WIND FARM AND THE SECRETARY'S ENVIRONMENTAL ASSESSMENT REQUIREMENTS (SEARs) HAVE RECENTLY BEEN ISSUED FOR THE PROJECT.

The SEARs outline the requirements for the Environmental Impact Statement (EIS) which will support the Development Application to the NSW Department of Planning, Industry Environment to construct and operate the wind farm.

Work is underway to prepare the EIS which will outline the impacts and opportunities of the development and incorporate feedback from the local community.

A map on the next page shows the proposed project which consists of up to 65 wind turbine generators, battery storage and associated infrastructure on agricultural land approximately 25 km east of Gundagai, NSW. The project is expected to have a capacity of approximately 400 MW, generating enough power for over 200,000 homes, saving over a million tonnes of greenhouse gas emissions every year.



You can view the Scoping Report and SEARs on the [Department of Planning, Industry and Environment's Major Projects website](#).



EXPECTED CAPACITY



EXPECTED HOMES POWERED

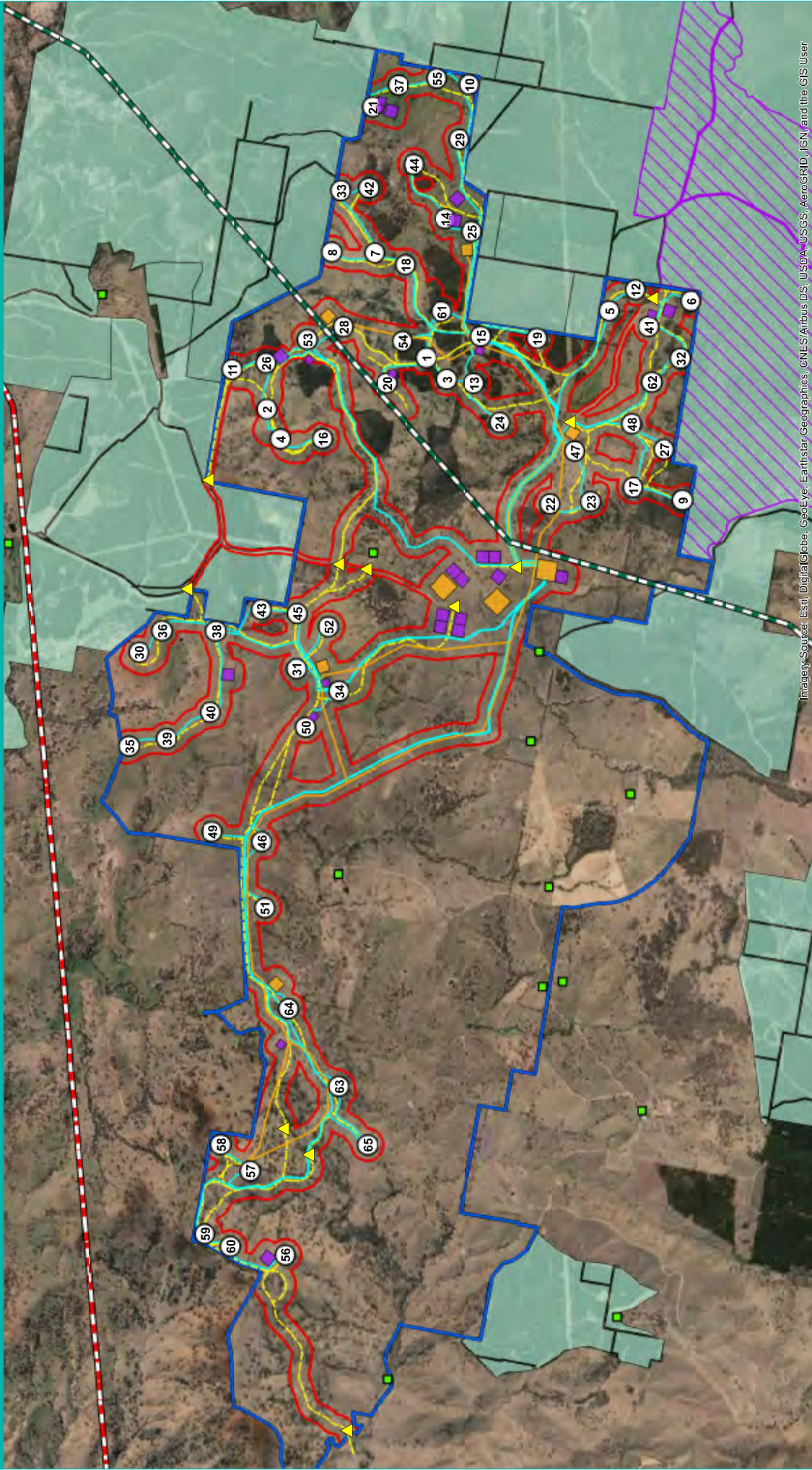


EXPECTED TONNES OF EMISSIONS AVOIDED



EXPECTED JOBS TO BE CREATED

PROJECT AND SURROUNDS



Imagery Sources: Esri, DigitalGlobe, GeoEye, Earthstar Geographics, CNES/Airbus DS, USDA, USGS, AeroGRID, IGN, and the GIS User

Datum/Projection: GDA 1994 MGA Zone 55
 Prepared by: KR
 Date: 01-10-2021

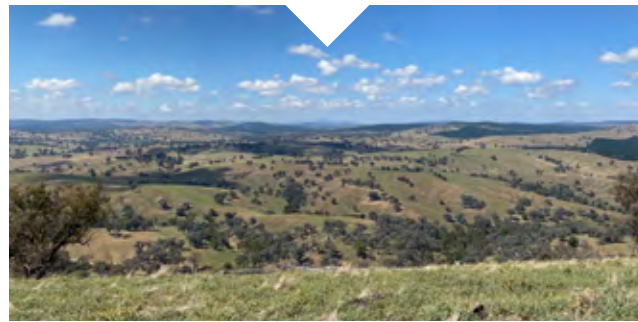
- | | |
|---------------------------|---------------------------------------|
| Project Site | Preliminary Infrastructure |
| Proposed Development Area | Preliminary access track |
| Named roads | Electrical - indicative UG cables |
| Dwellings | Electrical - potential OH line routes |
| 132 kV transmission line | Potential substation locations |
| 330 kV transmission line | Potential facility benches |
| State Forest | Proposed WTG locations |
| Flora Reserve | Proposed site access points |



NEXT STEPS

CWPR is working with consultants to prepare the EIS. The EIS will be prepared in accordance with the SEARs which require a range of multi-disciplinary studies to assess the impacts of the project.

The project team continues to consult with the community and welcome any feedback. A public open day will be held prior to the lodgement of the EIS. Public submissions on the EIS are welcomed and the community will be notified once it is released for comment. To complement our ongoing wind monitoring program and assist with further analysis of the wind resource, a new 160m wind monitoring mast will also be installed on site in the coming months.



COMMUNITY CONSULTATIVE COMMITTEE

A Community Consultative Committee (CCC) will be established for Jeremiah Wind Farm in accordance with the **Community Consultative Committee Guidelines for State Significant Projects**.

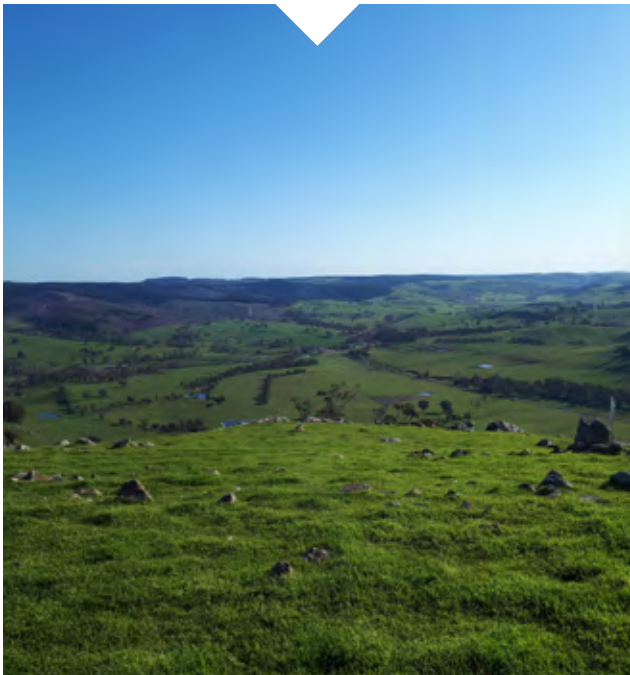
The purpose of the CCC is to foster good working relationships between CWP Renewables and representatives of the community and to provide a forum for open discussion, community feedback and information sharing. The CCC will comprise an independent chairperson, community members that live locally or are members of a stakeholder group, and representatives of Council and CWP Renewables. The CCC will meet regularly during the development of the project and the Department of Planning, Industry and Environment will appoint the independent chairperson.

We will soon seek expressions of interest for community representatives to join the CCC. Details on how to apply will be advertised in the local media, in our project news and on our website. The independent chairperson will oversee the selection process of committee members.



PROJECT TIMELINE INDICATIVE





COMMUNITY SPONSORSHIP

The Jeremiah Wind Farm Community Sponsorship Program is now open to provide funding or in-kind support to local community organisations and/or community-based activities, events and initiatives.



The Community Sponsorship Program Guidelines and Application [Form](#) are available on the Jeremiah Wind Farm website.

COMMUNITY ENHANCEMENT FUND

JEREMIAH WIND FARM WILL ESTABLISH A COMMUNITY ENHANCEMENT FUND TO PROVIDE ANNUAL MONETARY CONTRIBUTIONS TO FUND PROJECTS THAT BENEFIT THE LOCAL COMMUNITY FOR THE LIFE OF THE PROJECT.

The community fund will be established in the form of a Voluntary Planning Agreement (VPA) with Cootamundra-Gundagai Regional Council. The VPA provides the mechanism for collecting and distributing the funds.

The Draft VPA and Explanatory Note is now on public exhibition and we encourage you to have your say.



To view the documents and make your submission to Council, you can do so in person, via post or email. Details are provided on the [Council website](#).



While unfortunately the project team have been unable to visit the local area due to the travel restrictions in place, we are committed to ongoing dialogue with the community and project stakeholders. We will make ourselves available for safe, in-person meetings as soon as restrictions will allow.

Please feel free to get in touch with us if you have questions or would like further information.

CONTACT US

JESSICA PETERSEN – Project Manager
Phone: 0405 152 188
Email: info@jeremiahwindfarm.com.au
PO Box 1708, Newcastle NSW 2300

THOMAS BEHRENDT – Senior Project Developer
Phone: 0404 870 322

cwrenewables.com