



Jeremiah Wind Farm

Project
overview

Project and
permitting updates

Dragons
community blitz

Community
sponsorship

Project overview

The proposed Jeremiah Wind Farm consists of up to 65 wind turbine generators, 150 megawatt (MW) / 4-hour battery storage and associated infrastructure on agricultural land approximately 25 kilometres east of Gundagai, NSW.

The project is expected to have a generating capacity of approximately 400MW, the equivalent of powering more than 200,000 Australian homes.

400MW

Expected capacity

150MW
/ 4-hour

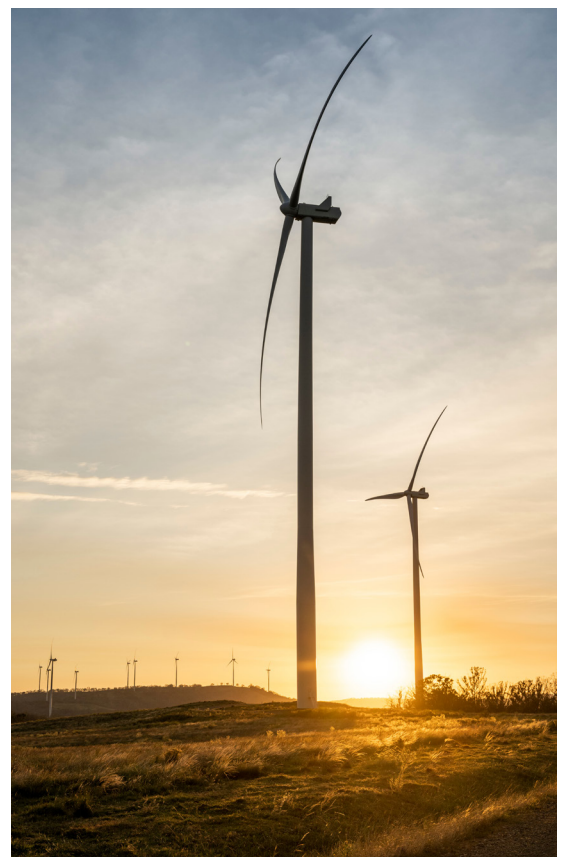
Expected battery
storage capacity

200K+

Expected homes powered

65

Wind turbines



Project and permitting updates

Extended SEARs

In June 2024, the Department of Planning, Housing and Infrastructure extended the Secretary's Environmental Assessment Requirements (SEARs) for the project, incorporating legislative changes made since submission of the Jeremiah Wind Farm Scoping Report in 2021.

This adjustment ensures that the project's Environmental Impact Statement (EIS) addresses current environmental legislation, policies and guidelines.



GE strategic alliance

Squadron Energy has partnered with GE Vernova in a strategic alliance to supply some of our upcoming wind farms with GE 6MW wind turbines. This includes Uungula Wind Farm near Wellington, Spicers Creek Wind Farm near Dubbo, and potentially Jeremiah Wind Farm.



This strategic alliance will help to ensure the availability of critical infrastructure required to deliver the project and reduces the risk of shortfall within the supply chain. Scan the QR code to find out more.

Reduced tip height

Following the announcement of the GE strategic alliance, we are revising the EIS technical assessments to align closer with the turbine specifications of GE 6.0MW wind turbines.

Consequently, the assessment envelope has been reduced from 300m to a new tip height limit of 250m from ground to top of blade tip.

Have your say

We welcome any feedback or questions you have about the project. Please reach out to the project team using the contact details below.

Prior to submitting the EIS, we will invite the community to attend a drop-in session to discuss details of the technical assessments directly.



Squadron Energy St George Illawarra Dragons community blitz

In June, we visited 11 local schools in the Tumut and Gundagai region and supported two community clinics with the Gundagai Tigers and Tumut Blues. This was in partnership with the St George Illawarra Dragons to deliver their Best You Can Be program.

We were joined by rugby league stars Corey Allan and Tara McGrath-West for school visits, activities, and footy clinics, delivering this initiative to more than 1,000 students in the region.

This visit is part of Squadron Energy's ongoing partnership with the Dragons, with a strong focus on community and delivering engaging and fun health and wellbeing programs to the communities local to our projects.



Community sponsorship

Over the past two and a half years, Jeremiah Wind Farm has supported 19 local community organisations and events, with more than \$65,000 provided through the Squadron Energy Sponsorship Program.

Some of our recent sponsorships include:

- Funding towards grandstand improvements for the Tumut Bulls
- Amber sponsor of the 2024 Tumut Falling Leaf Festival
- Sporting kit for St Patrick's Primary School, Gundagai
- Red Ribbon event sponsors of the 2024 Tumut Show.



Applications are open! Scan the QR code for more information and to apply online.



Contact us

Jessica Petersen – Senior Project Manager

Phone: 0482 097 449

Email: jeremiahwind@squadronenergy.com

PO Box 1708, Newcastle NSW 2000

Squadron Energy acknowledges the Traditional Owners and ongoing Custodians of the lands and waters on which we operate. We pay our respects to Elders past, present and emerging.

squadronenergy.com