



JEREMIAH WIND FARM

PROJECT UPDATE

RECENT ACTIVITIES

COMMUNITY
SPONSORSHIP

COMMUNITY
INFORMATION
SESSION

PROJECT UPDATE

THE JEREMIAH WIND FARM TEAM HAVE BEEN CONTINUING ENGAGEMENT WITH THE LOCAL COMMUNITY AND REGULATORY STAKEHOLDERS, WHILST ENVIRONMENTAL AND TECHNICAL ASSESSMENTS TO INFORM THE PROJECT'S ENVIRONMENTAL IMPACT STATEMENT (EIS) CONTINUE.

The proposed Jeremiah Wind Farm consists of up to 65 wind turbine generators, battery storage and associated infrastructure on agricultural land approximately 25 km east of Gundagai, NSW. The project is expected to have a generating capacity of approximately 400 MW.

Investigations undertaken during project scoping, in conjunction with feedback from our ongoing discussions with landowners and stakeholders, have helped to refine the project layout as shown on [page 2](#).

The project EIS is currently being prepared and a development application is expected to be lodged in the coming months.



EXPECTED
CAPACITY



EXPECTED HOMES
POWERED

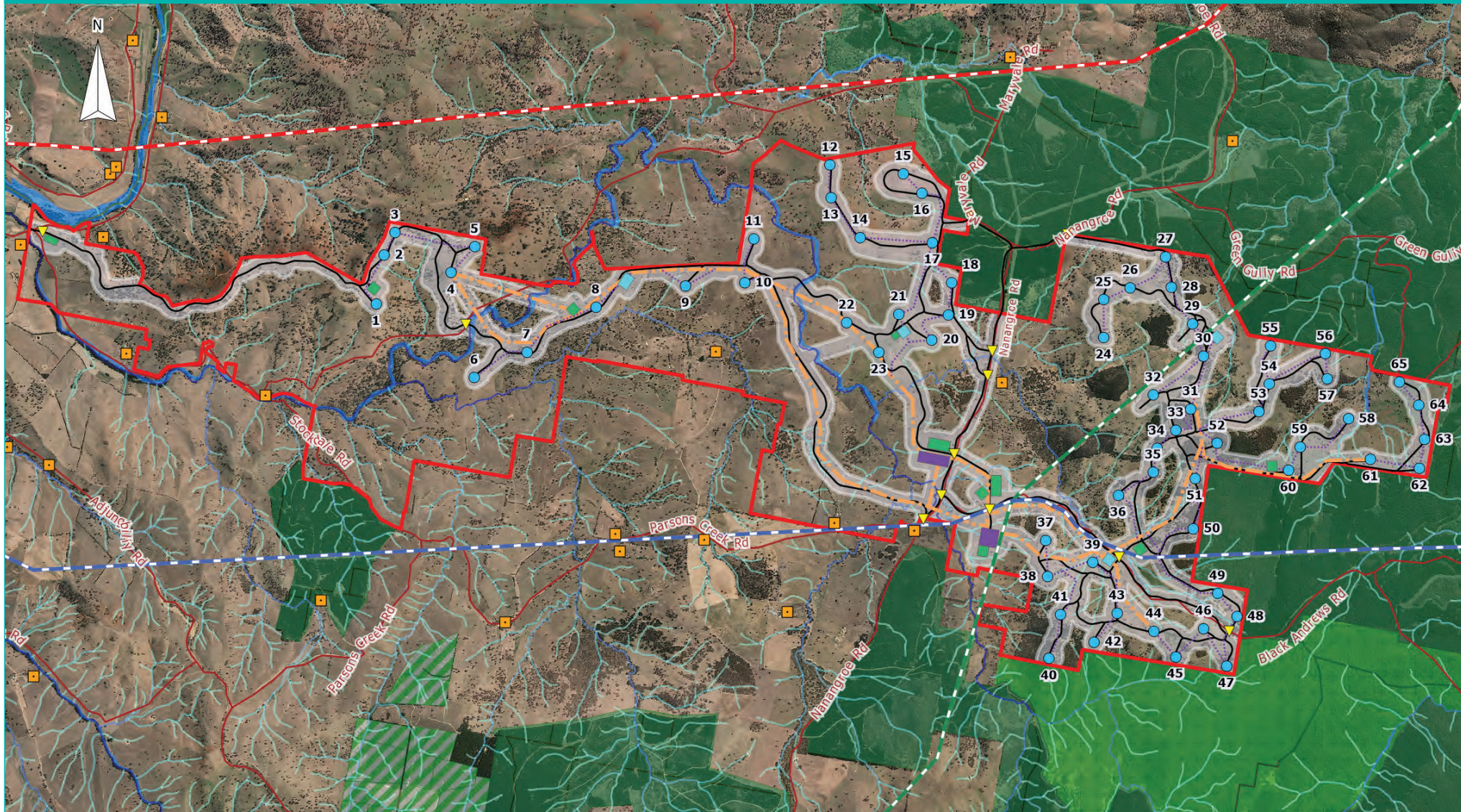


EXPECTED TONNES OF
EMISSIONS AVOIDED



EXPECTED JOBS
TO BE CREATED

PROJECT LAYOUT



RECENT ACTIVITIES

Environmental Impact Statement

The project is classified as a State Significant Development and will undergo a rigorous assessment process by State and Commonwealth Governments.

The EIS is being prepared in accordance with the Secretary's Environmental Assessment Requirements (SEARs) received in September 2021, which require a range of technical studies to assess the existing environment and all predicted impacts and benefits of the proposed project. The EIS will detail the potential impacts and opportunities for avoiding, minimising or mitigating these impacts. Independent specialists have been carrying out practical investigations to inform their assessments. This includes detailed biodiversity surveys in line with the requirements of the Biodiversity Conservation Act 2016 (NSW), comprising land-based surveys, bird and bat utilisation surveys, and assessment of aquatic habitat.



The construction transport route has been assessed to determine potential upgrades required to existing Council roads to enable site access for components and staff during project construction and operation. These upgrades to public roads will also benefit the community. A traffic and transport impact assessment has been carried out to determine appropriate mitigation for increased traffic volumes during the project's construction period.

The community will be notified once the EIS is on public exhibition, with submissions and comments from the community welcomed.

Community Consultation

CWP Renewables has been working with landholders in the project area since 2005. Listening to and considering feedback has been instrumental in developing the project layout.

In addition to landholders who host infrastructure, we recognise the importance of communicating and working with neighbours who may also be impacted by the project.

The project layout has been refined to avoid and minimise impacts where practical and has been shaped by the consultation we have undertaken.

We are committed to genuine engagement with all stakeholders in our projects and aim to make the process as transparent as possible for landowners.

NEXT STEPS

As the Jeremiah EIS technical assessments are being finalised, the project team continue to consult with the community and welcome any feedback. We encourage you to come along to our Community Drop-In Session at Adjungbilly Hall on Wednesday 4 May – see details on page 4.



COMMUNITY SPONSORSHIP

Community Sponsorship Program

THE JEREMIAH WIND FARM COMMUNITY SPONSORSHIP PROGRAM IS NOW OPEN TO PROVIDE FUNDING OR IN-KIND SUPPORT TO LOCAL COMMUNITY ORGANISATIONS AND/OR COMMUNITY-BASED ACTIVITIES, EVENTS AND INITIATIVES.

The initiatives supported to date by Jeremiah Wind Farm include:

- Bongongo Public School with a new ride-on mower to maintain the school and public grounds
- The Tumut Bulls Rugby Union Club with funding towards a new scoreboard
- The Crawford Angus Charity Camp Draft with funding towards event infrastructure
- Local radio station Sounds of the Mountains with a sponsorship package.



The Community Sponsorship Program Guidelines and [Application Form](#) are available on the [Jeremiah Wind Farm website](#).



Community Enhancement Fund

JEREMIAH WIND FARM HAS ENTERED INTO A VOLUNTARY PLANNING AGREEMENT WITH COOTAMUNDRA-GUNDAGAI REGIONAL COUNCIL, INCLUSIVE OF A COMMUNITY ENHANCEMENT FUND (CEF). THIS PROVIDES MONETARY CONTRIBUTIONS TO FUND PROJECTS THAT ARE OF BENEFIT TO THE LOCAL COMMUNITY.

The contributions will begin at the start of project construction and will continue for the life of the project. A CEF committee will be created in accordance with the Section 355 of the Local Government Act 1993 to distribute funds.

Projects and initiatives close to the wind farm project area will be prioritised and a portion of the fund will be used by Council to maintain safe local roads.

COMMUNITY INFORMATION SESSION

We would like to invite you to a community information session to learn more about the proposed Jeremiah Wind Farm and to provide your feedback and perspectives.

DROP-IN SESSION

When: Wednesday 4 May, 1.00pm – 7.00 pm

Location: Adjungbilly Community Hall,
Bongongo Public School
Adjungbilly Rd, Adjungbilly NSW 2727

BBQ and drinks will be provided at the event.

RSVP is not required, feel free to drop in at a time that suits you.

CWP Renewables is committed to ongoing dialogue with the community and project stakeholders. Please feel free to get in touch with us if you have questions or would like further information.

CONTACT US

JESSICA PETERSEN – Project Manager
Phone: 0405 152 188
Email: info@jeremiahwindfarm.com.au
PO Box 1708, Newcastle NSW 2300

THOMAS BEHRENDT – Senior Project Developer
Phone: 0404 870 322

cwprenewables.com