



# Koorakee Energy Park

Project overview

About us

Survey

Community sponsorship

## Project overview

The proposed Koorakee Energy Park, about 12km north of Euston in NSW, consists of a wind farm with up to 167 wind turbines approximately 270m in height, a solar farm and battery energy storage.

The proposed project has a capacity of 2GW, with the potential to generate enough clean energy to power the equivalent of more than 1 million NSW homes.

**2GW**

Expected capacity

**1.1m**

Expected homes powered

**1.5m**

Expected tonnes of emissions avoided

## About us

Squadron Energy is Australia's leading renewable energy company that develops, operates and owns renewable energy assets in Australia.

We are 100% Australian owned and have 1.1 gigawatts (GW) of renewable energy in operation and an Australian development pipeline of 20GW.

With proven experience and expertise across the project lifecycle, we work with local communities and our customers to lead the transition to Australia's clean energy future.

We own our projects from development right through to operations. This gives us unrivalled experience through the entire project life and provides us with a deep-founded respect for people, communities and the environment.

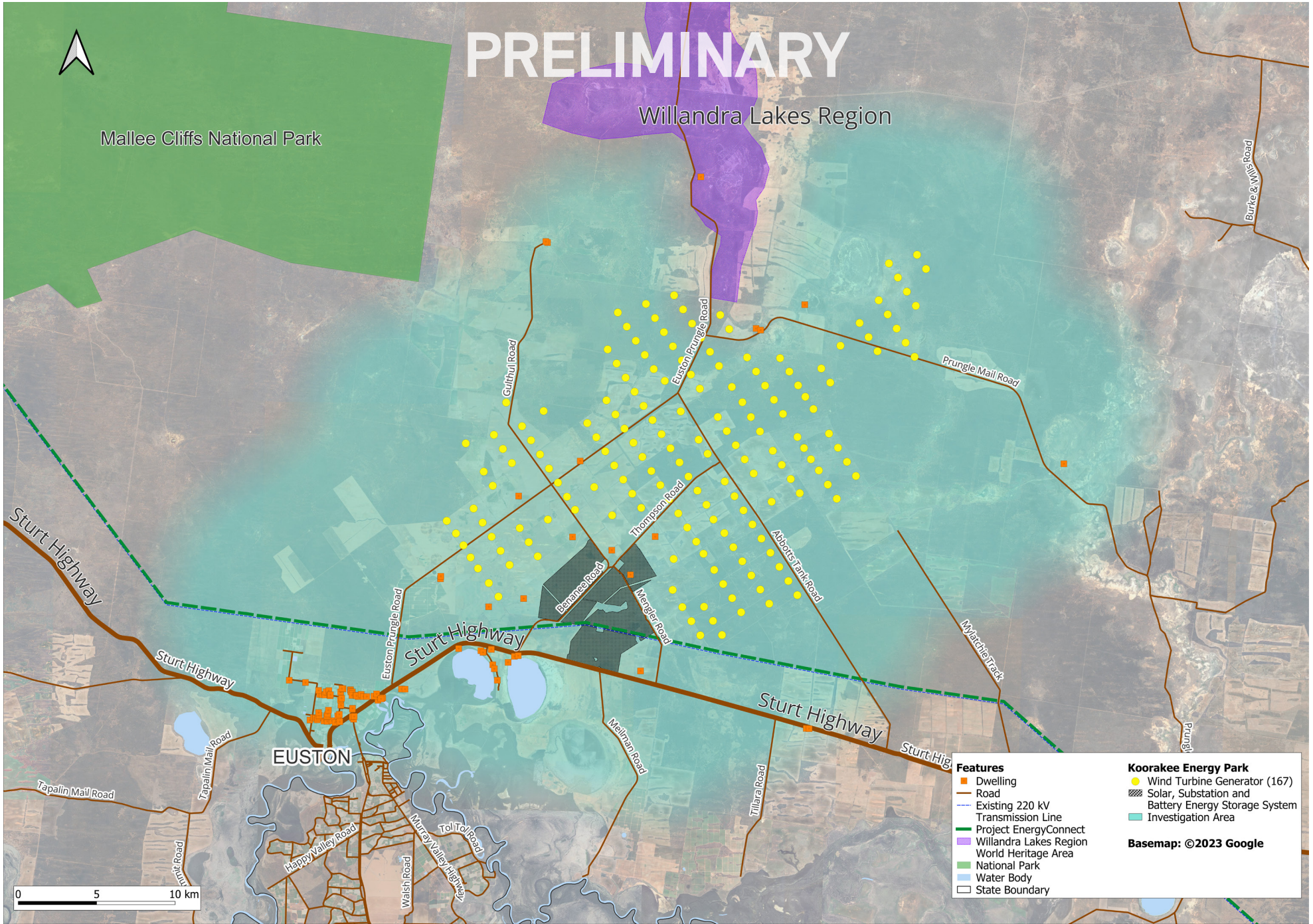


# Project map

# PRELIMINARY

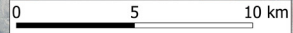
Willandra Lakes Region

Mallee Cliffs National Park



Features		Koorakee Energy Park	
<span style="color: orange;">■</span>	Dwelling	<span style="color: yellow;">●</span>	Wind Turbine Generator (167)
<span style="color: brown;">—</span>	Road		Solar, Substation and Battery Energy Storage System
<span style="color: blue;">- - -</span>	Existing 220 kV Transmission Line	<span style="background-color: cyan;">■</span>	Investigation Area
<span style="color: green;">—</span>	Project EnergyConnect		
<span style="background-color: purple;">■</span>	Willandra Lakes Region World Heritage Area		
<span style="background-color: green;">■</span>	National Park		
<span style="color: blue;">—</span>	Water Body		
<span style="border: 1px solid black;">□</span>	State Boundary		

**Basemap: ©2023 Google**



# Development process

Koorakee Energy Park is in the early stages of development. The project will include extensive community input and a rigorous assessment process by NSW State and Commonwealth Governments.

The first step is to develop a Scoping Report, describing the proposed project and potential impacts requiring further assessment. The NSW Department of Planning and Environment (DPE) will then set project specific Secretary's Environmental Assessment Requirements (SEARs) which the project must address in an Environmental Impact Statement (EIS).

The public are invited to make formal submissions during public exhibition of the EIS, which the project team will respond to in a submissions report. The application is then assessed and the consent authority determines whether it should be approved.

## Environmental assessment process



### Survey

We are seeking feedback from the local community via a simple questionnaire. The information will be used to inform the wind farm design and social impact assessment in the Scoping Report.



If you would like to participate, please complete the form via the QR code.



Community consultation is a key part of the development process and is the current focus of our activities. We welcome your feedback which helps shape the development during the planning process. We will engage closely with the local community and stakeholders throughout the life of the project.

## Community sponsorship

We share the benefits of our projects by supporting communities over the long term. We do this through a range of opportunities such as community benefits funds, voluntary planning agreements, community sponsorship and grant initiatives.

The Koorakee Energy Park sponsorship program is now open for applications. The sponsorship program guidelines and application form are available online.

Scan the QR code or visit [squadronenergy.com/communitysponsorship](https://squadronenergy.com/communitysponsorship)



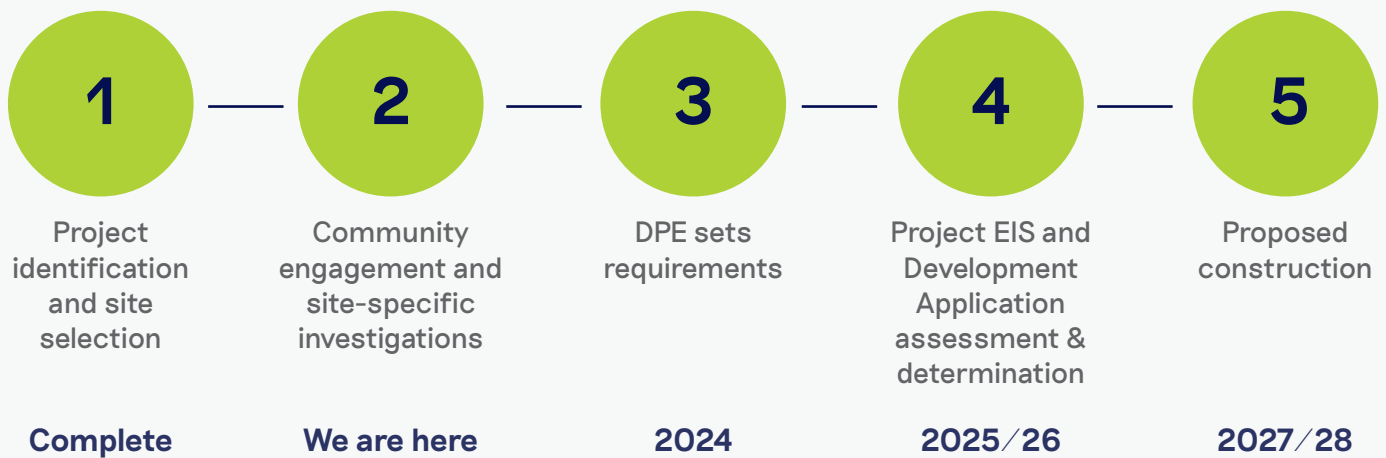
## Next steps

We have engaged an environmental consulting firm to carry out preliminary studies to identify environmental constraints and opportunities for Koorakee Energy Park. The studies, as well as feedback from the local community, will allow us to prepare a Scoping Report, to lodge with the NSW Department of Planning and Environment. We are aiming to have the Scoping Report ready by April 2024.

To keep up to date on future news and community engagement events, please sign up to our newsletter by visiting [koorakeeenergypark.com.au](https://koorakeeenergypark.com.au).



## Proposed timeline



## Contact us

David Stanke - Project Manager

Phone: 1800 208 944

Email: [info@koorakeeenergypark.com.au](mailto:info@koorakeeenergypark.com.au)

PO Box 1708, Newcastle NSW 2300

[squadronenergy.com](https://squadronenergy.com)