



SPICERS CREEK WIND FARM

THE PROJECT

CENTRAL
WEST-ORANA REZ

ABOUT US

NEXT STEPS

THE PROJECT

**WELCOME TO THE FIRST
COMMUNITY NEWSLETTER
FOR THE PROPOSED SPICERS
CREEK WIND FARM.**

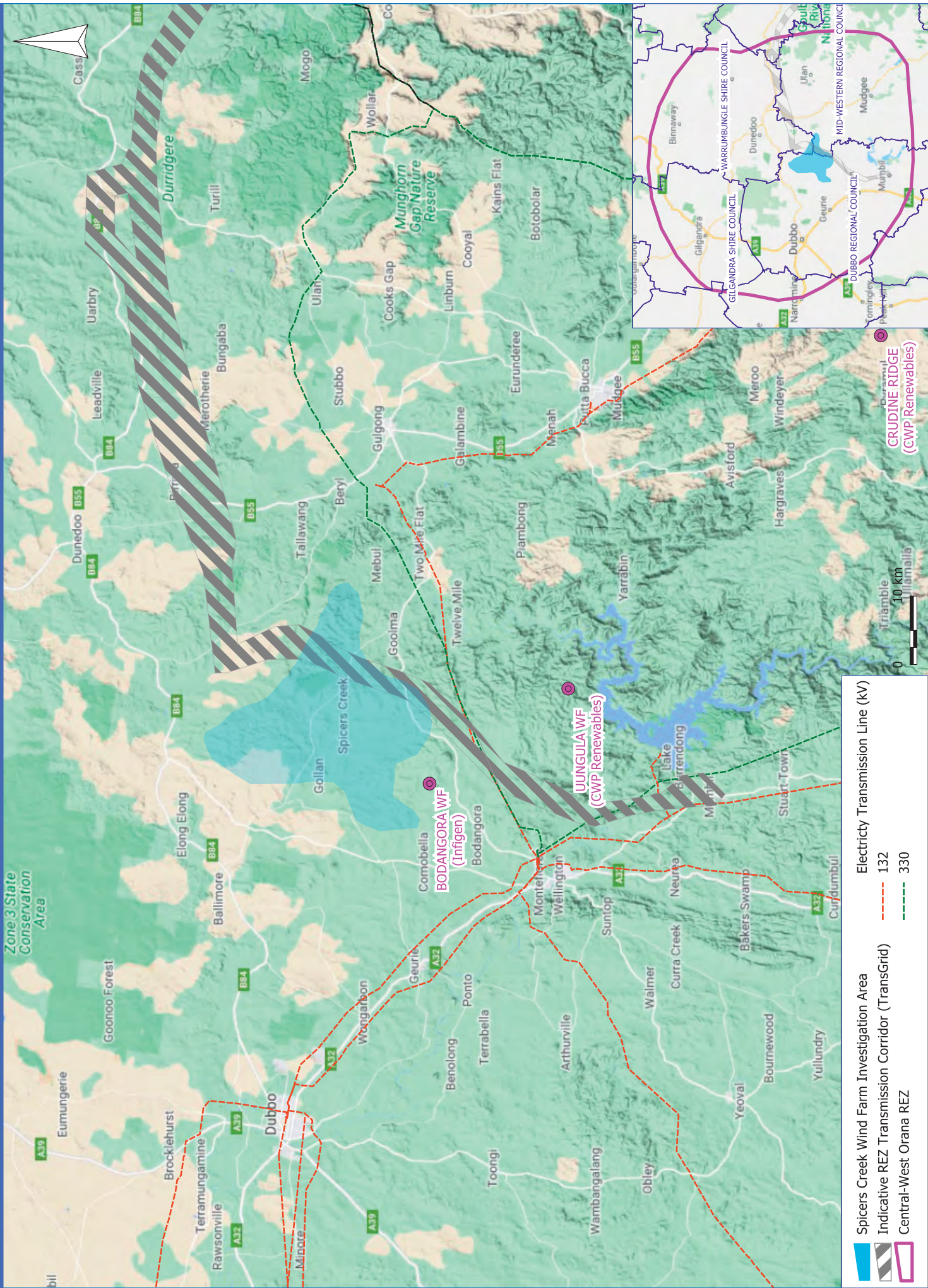


CWP Renewables is investigating a potential wind farm development located approximately 30 km west of Gulgong and 25 km north east of Wellington in Central West NSW. We believe the location is well suited to wind generation due to a reliable wind resource, low density of rural residential dwellings and position within the Central West-Orana Renewable Energy Zone.

The investigation area sits within three Local Government Areas – Dubbo Regional Council, Mid-Western Regional Council and Warrumbungle Shire Council.

CWP Renewables has been developing projects in Australia since 2007. Key development activities are coordinated from our offices in Newcastle and Sydney, with asset management services delivered from Canberra.

LOCATION



CENTRAL WEST-ORANA RENEWABLE ENERGY ZONE (REZ)

The NSW Government has set out a plan to deliver a number of Renewable Energy Zones (REZ) within the State. The first of these areas is in the Central-West Orana region around Dubbo and Wellington.



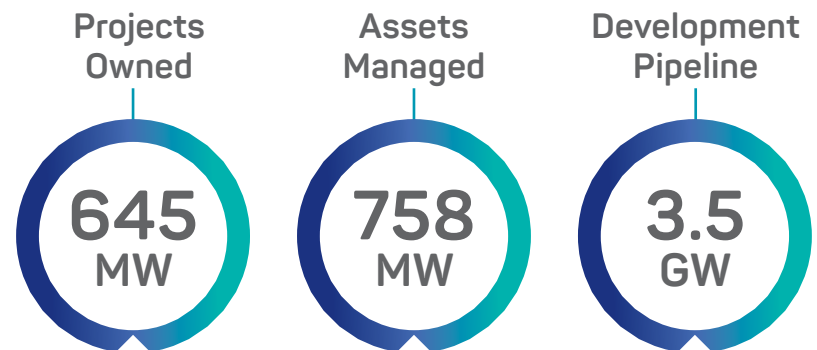
A REZ involves the coordinated development of new grid infrastructure in energy rich areas to connect multiple renewable energy generators (such as solar and wind farms) in the same location. The designation of a REZ is intended to result in the development of additional capacity for renewable electricity generation, producing low-cost power for NSW homeowners and business, driving down carbon emissions within the electricity generation sector, and importantly, driving up job growth and employment opportunities through enabling significant investment into the regions.

For more information on the Central West-Orana REZ, including an indicative location, visit:



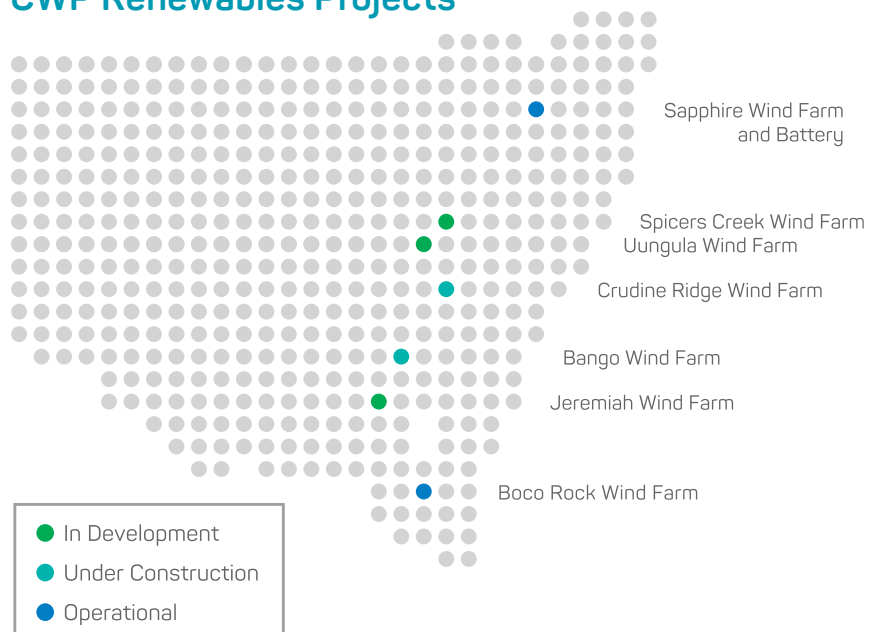
ABOUT CWP RENEWABLES

CWP Renewables is a renewable energy company that develops, owns and operates renewable energy assets in Australia. Our unique approach to own and manage each project from inception through to full operation ensures genuine engagement with all stakeholders at every stage.



We have proven experience and expertise across the project lifecycle, and work with local communities to lead the transition to Australia's low-cost, low-emissions energy future. CWP Renewables has been active in the broader region since 2007, with the development of the 37 wind turbine Crudine Ridge Wind Farm near Pyramul (currently under construction), and closer to this area, the 97 wind turbine Uungula Wind Farm near Wuuluman, which has been recommended for approval by the NSW Government.

CWP Renewables Projects



NEXT STEPS

CWP Renewables has been working with landholders in the Spicers Creek area since 2019. We are now at the point where we can assess the feasibility of the wind farm in more detail having gathered local wind data.

A key next step in this process, before presenting a proposed wind farm layout, is to hear community perspectives and gather feedback.

To achieve this we are looking to hold a Community Drop-In Session where members of the community can meet and talk face to face with the project team and representatives of CWP Renewables, learn more about the proposed Spicers Creek Wind Farm and provide your feedback.

PLEASE JOIN US:

WHEN:

THURSDAY 20 MAY
FROM 2.00PM – 7.00PM

LOCATION:

GOOLMA COMMUNITY HALL
GORRIES LANE, GOOLMA NSW 2852

(BBQ and drinks will be provided)

CWP Renewables is committed to an ongoing dialogue with interested members of the community. If you know of anyone interested in the project who may wish to receive this newsletter, be added to our mailing list, or have a personal discussion with the project team, please contact us on the details provided below.



COMMUNITY SURVEY

To help shape development of the Spicers Creek Wind Farm, we are also seeking feedback from the local community to better understand the scenic values of the area via a simple questionnaire.

If you would like to participate, please complete the form included in this newsletter and send back to our team via post or email.



THE SPICERS CREEK WIND FARM PROJECT TEAM WILL BE IN THE AREA REGULARLY TO ANSWER QUESTIONS AND UNDERSTAND COMMUNITY VIEWS. PLEASE GET IN TOUCH USING THE CONTACT DETAILS BELOW.

CONTACT US

TRISH MCDONALD – Project Manager

Phone: 0436 694 644

Email: info@spicerscreekwindfarm.com.au

PO Box 1708, Newcastle NSW 2300

KRISTY OLD – Development Manager

Phone: 0416 932 549

cwprenewables.com