



# Moreton Hill Wind Farm

## In this issue

- Project update
- Layout update
- New met mast
- VicGrid REZs
- Community investment program
- Community sponsorship

## At a glance



**420MW**  
Expected capacity



**260k**  
Expected homes  
powered



**350k**  
Expected tonnes of  
emissions avoided



**62**  
Wind turbines



**150MW**  
Battery energy  
storage

## Project update

Welcome to the latest newsletter for the proposed Moreton Hill Wind Farm (MHWF), located on Wadawurrung Country, 35 kilometres southwest of Ballarat.

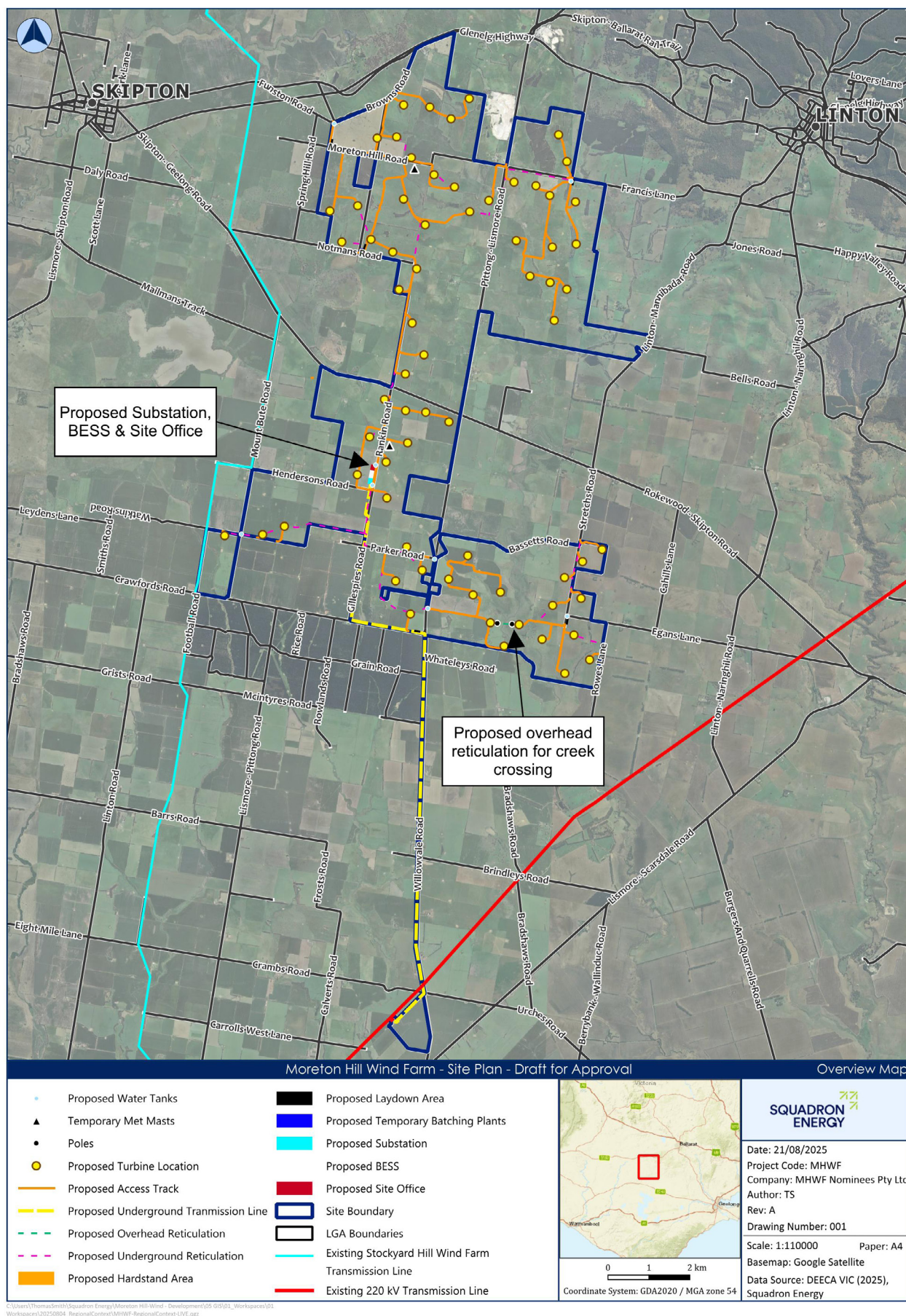
Since our last edition, MHWF has:

- updated the site boundary, following ongoing environmental and technical assessments
- installed a new met mast to support onsite wind monitoring
- been included in the newly proposed VicGrid Central Highlands Renewable Energy Zone.





# Layout update



The project boundary has been expanded to the southeast to allow greater design flexibility and respond to environmental and cultural heritage considerations.

The revised layout includes 68 potential wind turbine locations, however consistent with original planning referrals, only 62 turbine sites will be selected for construction. Subject to final selection, the turbines will be up to 252 metres tall.

An Environment Report and Planning Permit Application will be submitted in late 2025, based on the 68-turbine layout, to the Minister for Planning, who will make a decision on the project for the State and Federal government under a Bilateral Assessment.

The final 62 turbines will be strategically chosen to avoid or minimise environmental impacts, ensuring the project meets planning requirements whilst balancing energy production and local sensitivities.

## FAQs

Curious about how wind energy and wind farms work? We have put together answers to some of the most frequently asked questions.



## Met mast installation

In July 2025, Squadron Energy installed a new 110m meteorological mast north of Moreton Hill Road. The mast will measure wind speed and direction to help assess energy production potential, turbine performance and potential noise impacts.

Ongoing wind data collection is important, as wind patterns vary seasonally. This information supports accurate modelling of the project's energy output and helps site turbine locations.

To date, onsite monitoring confirms strong wind resources, reinforcing the project's renewable energy potential.

The team has worked closely with landowners to install met masts with minimal land use disruption and in locations free from key environmental and land use constraints.

## VicGrid Renewable Energy Zones

The draft Victorian Transmission Plan identifies seven Renewable Energy Zones (REZs) with strong wind and solar resources that are suitable for large-scale renewable energy projects.

Coordinated development in REZs supports the transition from coal, meets emissions targets, ensures energy reliability and maximises community benefits.

Moreton Hill Wind Farm sits within the Central Highlands REZ, offering transmission certainty, alignment with state planning and opportunities for local economic benefit.



**Scan the QR code to learn more about VicGrid and REZs**



## Community investment program

Squadron Energy is committed to leaving a lasting legacy in the communities where we operate. One way we do this is through long-term community investment programs. These include community benefit funds, sponsorships, voluntary neighbour agreements, grants and direct or in-kind contributions such as infrastructure upgrades.

We aim to deliver meaningful local benefits, including employment, business opportunities and partnerships with First Nations communities.

We will invest at least \$1,050 per megawatt of our project's final capacity each year - starting from the commencement of construction and continuing for the life of our project. Based on our current expected capacity of 420 megawatts, this means around \$13 million will be shared with the community over the life of our project.

We want this investment to reflect local priorities. To help shape the program, we're inviting your ideas and feedback.

### Survey

Please share your thoughts by scanning the QR code to complete the Moreton Hill Wind Farm Community Investment Program survey by **10 October 2025**. Insights from the survey will guide future engagement and program design. We will share a summary of what we've heard and how your feedback is shaping our approach.



## Community sponsorship

This year, our community sponsorship program has proudly supported:

- Skipton Primary School to install a new Gaga Pit, to promote inclusive play and physical activity for all students
- Friends of the RSL, Skipton Branch, to help refurbish Veteran Gravesites, plant new trees and signage for the Remembrance Walk

Applications are open for community sponsorship. For more information or to apply, scan the QR code or visit [www.squadronenergy.com/community/communitysponsorship](http://www.squadronenergy.com/community/communitysponsorship).

Members of our project team are regularly in the region and are happy to meet with the community regarding the project, answer questions you may have or to discuss potential sponsorship ideas. If you would like to meet with us, please reach out using the contact details below.



## Contact us

**Laura Jeffrey - Senior Project Manager**

Phone: 0483 902 842

Email: [moretonhillwind@squadronenergy.com](mailto:moretonhillwind@squadronenergy.com)

Web: [moretonhillwindfarm.com.au](http://moretonhillwindfarm.com.au)

**SQUADRON**  
**ENERGY**

[squadronenergy.com](http://squadronenergy.com)