



Moreton Hill Wind Farm

**Project
overview**

**EES and EPBC
referrals**

**Community
sponsorship**

**Community Drop-In
Sessions**

The Project

The proposed Moreton Hill Wind Farm is located on Wadawurrung Country, about 35 kilometres southwest of Ballarat, Victoria.

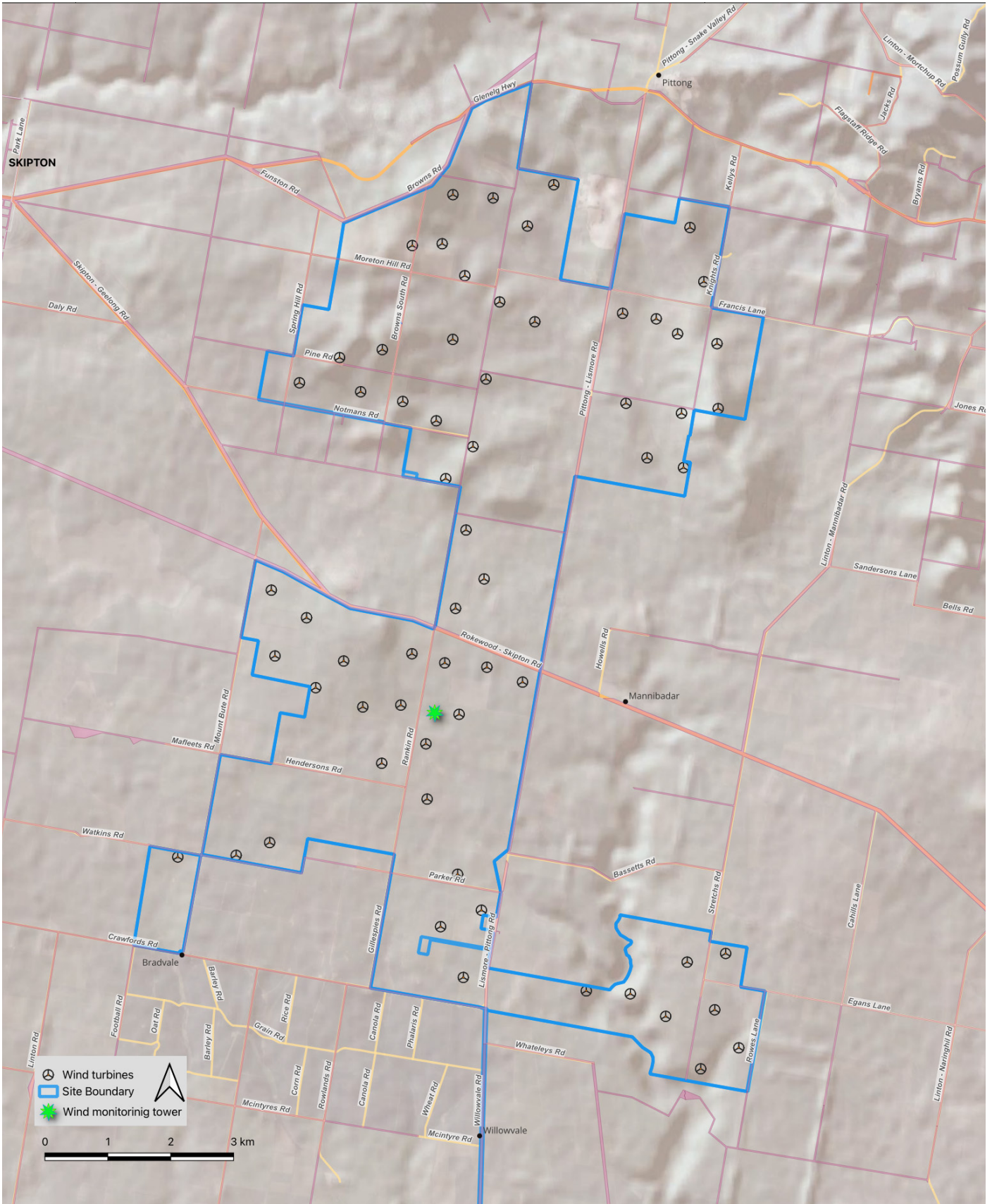
The project comprises up to 62 turbines with a capacity of approximately 420 megawatts (MW), enough to power about 260,000 homes and avoid nearly 350,000 tonnes of carbon emissions annually. The wind turbines will have a tip height of approximately 250 metres.

The proposed wind farm is on land bound by Glenelg Highway in the north, Wheatleys Road in the south, Mount Bute Road in the west and Knights and Rows Lane in the east.

The project spans the Corangamite and Golden Plains Local Government Areas.



Project area



EES and EPBC referrals

In February 2024 Squadron Energy submitted a referral under the *Victorian Environment Effects Act 1978* (EE Act) for the Victorian Minister for Planning to determine whether an Environment Effects Statement (EES) is required for the project.

Several preliminary technical assessments have been prepared to support the referrals and help inform the Minister for Planning’s decision on the requirement for an EES.

These assessments have characterised the existing conditions of the project site and its surrounds and identified potential environmental effects of the Project. These technical assessments include biodiversity, landscape and visual, noise, cultural heritage, aviation, geotechnical, traffic, hydrology, socio-economic, planning, shadow flicker, electromagnetic interference and bushfire risk.

If an EES is not required, a Planning Application for the Moreton Hill Wind Farm will be lodged with the Minister for Planning in late 2024. If an EES is required, this process would be expected to be completed during 2025.

A referral under the *Commonwealth Environment Protection and Biodiversity Conservation Act 1999* (EPBC Act) has been submitted to the Commonwealth Minister for the Environment and Water. The EPBC referral will determine whether the project is a controlled action and requires approval under the EPBC Act.

Proposed timeline



New met mast installed

Squadron Energy installed a new 160-metre meteorological mast or ‘met mast’ in February 2024, south of Rankin Road (see map for further detail).

The ‘met masts’ are used to determine:

- how much energy the project will produce
- what type of mechanical effect the wind will have on the wind turbines
- how to model and understand the noise behaviour of the wind farm.

As the wind can vary with the seasons, collecting ongoing wind data at a met mast is an important milestone.

The Moreton Hill Wind Farm project team will use the collected information to calculate and model the project’s energy production.



Squadron Energy is off to a flying start



The project's community sponsorship program is off to a flying start, supporting several community groups already.

Beneficiaries to date include:

- Skipton Football and Netball Club – general support for the 2023 season
- Linton Bowls Club – supply of new playing shirts for all members
- Mannibadar Hall – supporting the purchase of a defibrillator machine to be housed at the hall.

Linton Bowls Club President Craig Grenfell had this to say about Squadron Energy's support:

"We hadn't updated our shirts for a few years, so to have Squadron Energy provide much-needed financial support, the entire club is extremely grateful, and we are looking forward to a long prosperous relationship with them."

The community sponsorship program is available for applications throughout the project life cycle, from now, through construction and operations. Applications are reviewed quarterly, so please get in touch if you are a community organisation that we may be able to support. You can find out more at: www.squadronenergy.com/communitysponsorship

Community Drop-In Sessions

Since we launched the project in October 2023, we have spoken to most landowners within four kilometres of the project. If we have missed you please don't hesitate to contact us on **0483 902 842** to arrange a meeting.

We are now extending our community engagement, and the project team will be holding Community Drop-In Sessions at the following times and places:

Please join us:

When:	Location:	Location:
Thursday 18 April 2024	9.30a.m. - midday Bluestone Bubbles & Banter Montgomery St Skipton 3361	1p.m. - 3p.m. Linton Community Hub 68 Sussex St Linton 3360



This will be an opportunity to find out more about the project and speak with the project team.

If you're unable to make these sessions, the project team is available to meet you at a convenient time. Simply call us on **0483 902 842** or email info@moretonhillwindfarm.com.au.

Contact us

Ian Courtney - Senior Project Developer
Phone: 0483 902 842
Email: info@moretonhillwindfarm.com.au

squadronenergy.com