



Moreton Hill Wind Farm

In this issue

- Project update
- Planning process update
- Community engagement
- Community sponsorship

At a glance



260k

Expected homes powered



420MW

Expected capacity



350k

Expected tonnes of emissions avoided

Project update

The proposed Moreton Hill Wind Farm (MHWF) is located on Wadawurrung Country, around 35 kilometres southwest of Ballarat, Victoria.

We are currently working on several assessments for the project's Environmental Report to support the planning permit application. These include biodiversity, flora and fauna, cultural heritage, traffic and transport, civil design and wind monitoring.

Squadron Energy is exploring opportunities with Victorian landowners who are interested in hosting turbines. If you would like further details on this, feel free to contact the project team via the contact information at the end of this newsletter.



Planning process update

EES referral decision

In October 2024, the Victorian Minister for Planning decided that Moreton Hill Wind Farm will be assessed through an Environmental Report, with conditions. The Environmental Report will document our thorough assessments on fauna, including specific studies conducted on the Brolga. We are planning to submit the Environmental Report towards the end of 2025.

Upcoming engagement with the community

We understand that community input is critical to the success of MHWF and are committed to ongoing, effective engagement. A community drop-in session will be held to provide an opportunity to meet the project team, ask questions and provide feedback on the project. Further details will be provided on the session as the project progresses.

Please scan the QR code and select 'Contact' to subscribe to our latest news.



EPBC referral and determination

In July 2024, Moreton Hill Wind Farm qualified as a 'controlled action' under the *Environment Protection and Biodiversity Conservation Act* (EPBC Act). This determination was made by the Commonwealth Department of Climate Change, Energy, the Environment and Water, due to the presence of listed threatened and migratory species within the project area. The impact on the EPBC species will be assessed under a bilateral assessment agreement between state and federal authorities, before the project can receive final approval under the EPBC Act.

The identified species include three birds:

- Blue-winged Parrot
- Brown Treecreeper
- White-throated Needletail



Wind monitoring

We have been collecting wind speed data from our meteorological (met) mast during the past two years. The results indicate a strong and consistent wind resource. An additional met mast will be installed later in 2025 to gather more data. We will provide an update prior to the new met mast being installed.

Community engagement

Engaging with neighbours

As part of our ongoing commitment to community and stakeholder engagement, we are exploring ways to share the long-term benefits of the project with nearby neighbours.

We look forward to meeting with landowners surrounding the project over the coming months. Please contact our team if you live nearby and would like to speak with us.

First Nations stakeholder engagement and sponsorship

Squadron Energy is working with the Wadawurrung Traditional Owners Aboriginal Corp (WTOAC) on the Cultural Heritage Management Plan (CHMP) for the project. The plan will explain the results of cultural heritage assessments and outline the conditions that a project needs to comply with before, during and after works to manage and protect Aboriginal cultural heritage in the project area. The report will be prepared by a specialist heritage advisor and approved by a Registered Aboriginal Party or First Peoples – State Relations.

Squadron Energy is committed to working with Traditional Owners to identify potential impacts and opportunities. We also welcome First Nations groups and events to seek funding through our community sponsorship program.

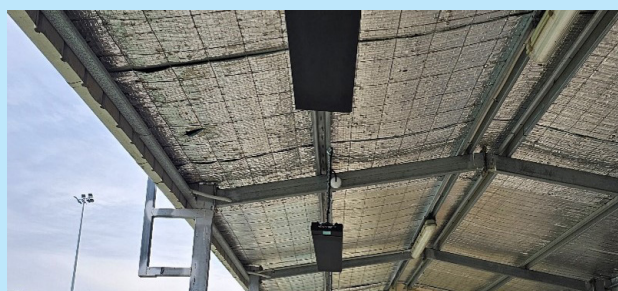
Community sponsorship

Our community sponsorship program continues to make a positive impact by supporting local community organisations. Most recently we contributed to the renovation of the netball and basketball courts at Skipton Primary School and assisted the Skipton Football Netball Club to install shelter heating.

Applications are open. Scan the QR code for more information and to apply online.



Skipton Primary School basketball court



Skipton Football Netball Club shelter heating

Contact us

Laura Jeffrey - Senior Project Manager

Phone: 0483 902 842

Email: moretonhillwind@squadronenergy.com

Web: moretonhillwindfarm.com.au


SQUADRON
ENERGY

squadronenergy.com