



Moreton Hill Wind Farm

Project overview

Process planning

Proposed timeline

Community engagement

The Project

The proposed Moreton Hill Wind Farm is located on Wadawurrung Country, about 35km southwest of Ballarat, Victoria.

The proposed Wind Farm will consist of up to 62 turbines with a total capacity of approximately 420 megawatts (MW).

The project site is on land bounded by Glenelg Highway in the north, Wheatleys Road in the south, Mount Bute Road in the west and Knights and Rows Lane in the east. The project spans the Corangamite and Golden Plains Local Government Areas.

The turbines will have a tip height of approximately 250m and together will produce enough renewable energy to power approximately 260,000 homes and avoid nearly 350,000 tonnes of carbon emissions annually.

260k

Expected homes powered

420MW

Expected capacity

62

Wind turbines

350k

Approx tonnes of emissions avoided

Why this location?

The proposed Moreton Hill Wind Farm site was chosen because it:

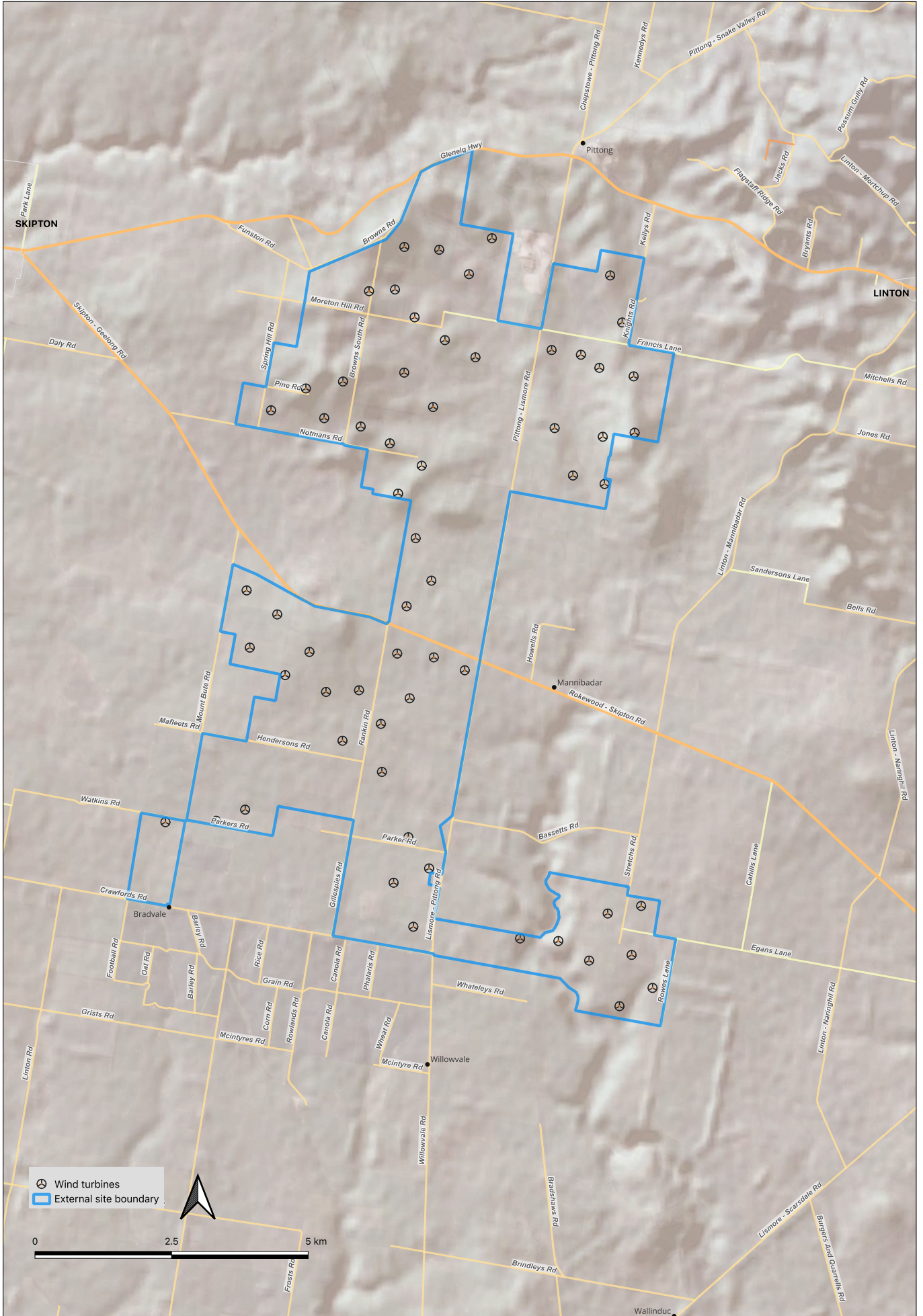
- has a suitable, consistent wind resource
- is in an area with a low population density
- will have minimal effects on flora and fauna
- offers ease of access for construction.

About us - Squadron Energy

Squadron Energy is 100% Australian owned with more than 20 major renewable energy projects either operating, under construction or in development across New South Wales, Victoria and Queensland.

Our unique approach of owning and managing each project from inception through to full operation ensures genuine engagement with all stakeholders at every stage of the development.

Project area



Planning process

The project is in the early feasibility phase with site investigations and environmental studies underway. We expect to lodge an Environment Effects Statement (EES) referral to the Victorian Minister for Planning in 2023, who will decide the planning pathway.

The information provided to the Minister will be referenced against the triggers contained within the EES Act (1978) and the Minister will decide if the project will be subject to an EES or will be assessed through the normal planning process.

If an EES is not required, a Planning Application for the Moreton Hill Wind Farm will be lodged with the Minister for Planning in late 2024. If an EES is required, this process would be expected to be completed during 2025.

The application will be assessed against the Policy and Planning Guidelines for the Development of Wind Energy Facilities in Victoria which set standards and limits covering:

- Sound compliance
- Electromagnetic interference
- Impact to cultural heritage
- Landscape impact
- Aviation
- Socio economic impacts
- Impact to flora and fauna
- Shadow flicker

Updates will be available via the project website at www.moretonhillwindfarm.com.au



Proposed timeline



Community engagement

Landowner meetings

We understand that our projects may have impacts on communities, and we actively encourage open and regular communication with all local stakeholders through meetings, open days and other project communication channels.

Community benefit sharing

We are committed to being a positive contributor to the communities where we work. We share the benefits of our projects by supporting communities over the long term.

We do this through a range of opportunities such as community benefit funds, neighbour agreements, neighbour benefit schemes, community sponsorships and grant initiatives.

We recognise that each community is different and through partnerships with Councils and local groups, and consultation with the community, we aim to tailor benefits and make a positive lasting regional contribution.

Next steps

In the coming weeks we will be meeting in person with all landowners with a dwelling within four kilometres (4 km) of the proposed project site to discuss the project. If you would like to meet with us to discuss the project, you can contact us via phone or email and we will arrange a time to meet you at your home.

Further information is available on our website.



Local economic development

Squadron Energy's mission is to maximise investment in the regional economy through the engagement of local businesses. Our investments in our local communities are long lasting and have significant flow on effects, creating shared value from our projects.

We aim to hire local contractors wherever possible, to support our projects throughout the project lifecycle, with temporary and ongoing business opportunities created during the construction and operational periods.

The Squadron development team are committed to engaging with local businesses and contractors from the region to present them with opportunities to benefit from the Moreton Hill Wind Farm project.

While the Moreton Hill Wind Farm team is not yet in a position to develop a register of local businesses in this development phase, we will keep you updated in our newsletter and on our web page.

Businesses and the local community will be advised once the wind farm receives approval, when we will reach out to local businesses and the wider community to advise of upcoming opportunities.

Contact us

Ian Courtney - Senior Project Developer

Phone: 0483 902 842

Email: info@moretonhillwindfarm.com.au