

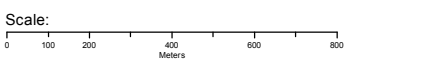
Delicensed & Former Licensed EPA Activities

Proposed Gas Pipeline & Berth 101, Port Kembla, NSW 2505 (Section 4)



Legend

- Site Boundary
- Report Buffer
- Property Boundary
- Delicensed Activities still Regulated by EPA
- Former Licensed/Regulated Activities (revoked or surrendered)
- Surrendered Licences related to Other Activities on Waterways incl. Application of Herbicides



Property Boundary Data Source:
© Department Finance, Services & Innovation 2018

Coordinate System:
GDA 1994 MGA Zone 56

Date: 19 July 2018

EPA Activities

Proposed Gas Pipeline & Berth 101, Port Kembla, NSW 2505 (Section 4)

Delicensed Activities still regulated by the EPA

Delicensed activities still regulated by the EPA, within the dataset buffer:

Licence No	Organisation	Name	Address	Suburb	Activity	Loc Conf	Distance	Direction
6141	PACIFIC NATIONAL (NSW) PTY LTD	ILLAWARRA BULK TERMINAL	TOM THUMB ROAD	PORT KEMBLA	Hazardous, Industrial or Group A Waste Generation or Storage	Road Match	0m	Onsite
1355	CLEARY BROS (BOMBO) PTY LTD	CLEARY BROS CONCRETE	8 JOHN CLEARY PLACE	CONISTON	Concrete works	Premise Match	276m	North West
1110	BITUPAVE LTD	BORAL ASPHALT	SPRINGHILL ROAD	PORT KEMBLA	Bitumen mixing	Premise Match	961m	West

Delicensed Activities Data Source: Environment Protection Authority
© State of New South Wales through the Environment Protection Authority

Former Licensed Activities under the POEO Act 1997, now revoked or surrendered

Former Licensed activities under the Protection of the Environment Operations Act 1997, now revoked or surrendered, within the dataset buffer:

Licence No	Organisation	Location	Status	Issued Date	Activity	Loc Conf	Distance	Direction
13084	DONNELLEY CIVIL PTY LIMITED	Morton Way and Tom Thumb Road, PORT KEMBLA, NSW 2505	Surrendered	05/05/2009	Other activities	Premise Match	0m	Onsite
4653	LUHRMANN ENVIRONMENT MANAGEMENT PTY LTD	WATERWAYS THROUGHOUT NSW	Surrendered		Other Activities / Non Scheduled Activity - Application of Herbicides	Network of Features	0m	Onsite
4838	Robert Orchard	Various Waterways throughout New South Wales - SYDNEY NSW 2000	Surrendered		Other Activities / Non Scheduled Activity - Application of Herbicides	Network of Features	0m	Onsite
6630	SYDNEY WEED & PEST MANAGEMENT PTY LTD	WATERWAYS THROUGHOUT NSW - PROSPECT, NSW, 2148	Surrendered		Other Activities / Non Scheduled Activity - Application of Herbicides	Network of Features	0m	Onsite
20534	WATERWAY CONSTRUCTION S PTY LTD	, Inner Harbour, PORT KEMBLA, NSW 2505,	Surrendered	20/11/2014	Other activities	Premise Match	10m	South East
12848	WATERWAY CONSTRUCTION S PTY LTD	FARRER ROAD, PORT KEMBLA, NSW 2505	Surrendered	01/02/2008	Miscellaneous licensed discharge to waters (at any time)	Road Match	29m	South
20563	BOSKALIS AUSTRALIA PTY LIMITED	, Tom Thumb Road, PORT KEMBLA, NSW 2505,	Surrendered	07/04/2015	Water-based extractive activity	Premise Match	170m	South East
12571	BOSKALIS AUSTRALIA PTY LIMITED	Five Islands Road, PORT KEMBLA, NSW 0	Surrendered	30/01/2007	Water-based extractive activity	General Area/ Suburb Match	271m	South
12720	GEORGIU GROUP PTY LTD	Tom Thumb Road, PORT KEMBLA, NSW 2505	Surrendered	05/07/2007	Water-based extractive activity	Premise Match	274m	South East
12868	MAINLAND CIVIL PTY LIMITED	FORESHORE ROAD, PORT KEMBLA, NSW 2505	Surrendered	14/03/2008	Miscellaneous licensed discharge to waters (at any time)	Premise Match	274m	South East

Licence No	Organisation	Location	Status	Issued Date	Activity	Loc Conf	Distance	Direction
11294	ENDEAVOUR ENERGY	BRIDGE STREET, CONISTON, NSW 2500	Surrendered	03/01/2001	Hazardous, Industrial or Group A Waste Generation or Storage	Premise Match	388m	North
12135	AUSTRAL CONSTRUCTION PTY. LTD.	Farrer Road, PORT KEMBLA, NSW 2505	Surrendered	26/05/2004	Coal Washery Reject or Slag Landfilling	Premise Match	429m	South
12491	GEORGIU GROUP PTY LTD	Products Berth Road, PORT KEMBLA, NSW 2505	Surrendered	23/05/2006	Coal Washery Reject or Slag Landfilling	Premise Match	429m	South
12491	GEORGIU GROUP PTY LTD	Products Berth Road, PORT KEMBLA, NSW 2505	Surrendered	23/05/2006	Land-based extractive activity	Premise Match	429m	South

Former Licensed Activities Data Source: Environment Protection Authority
© State of New South Wales through the Environment Protection Authority

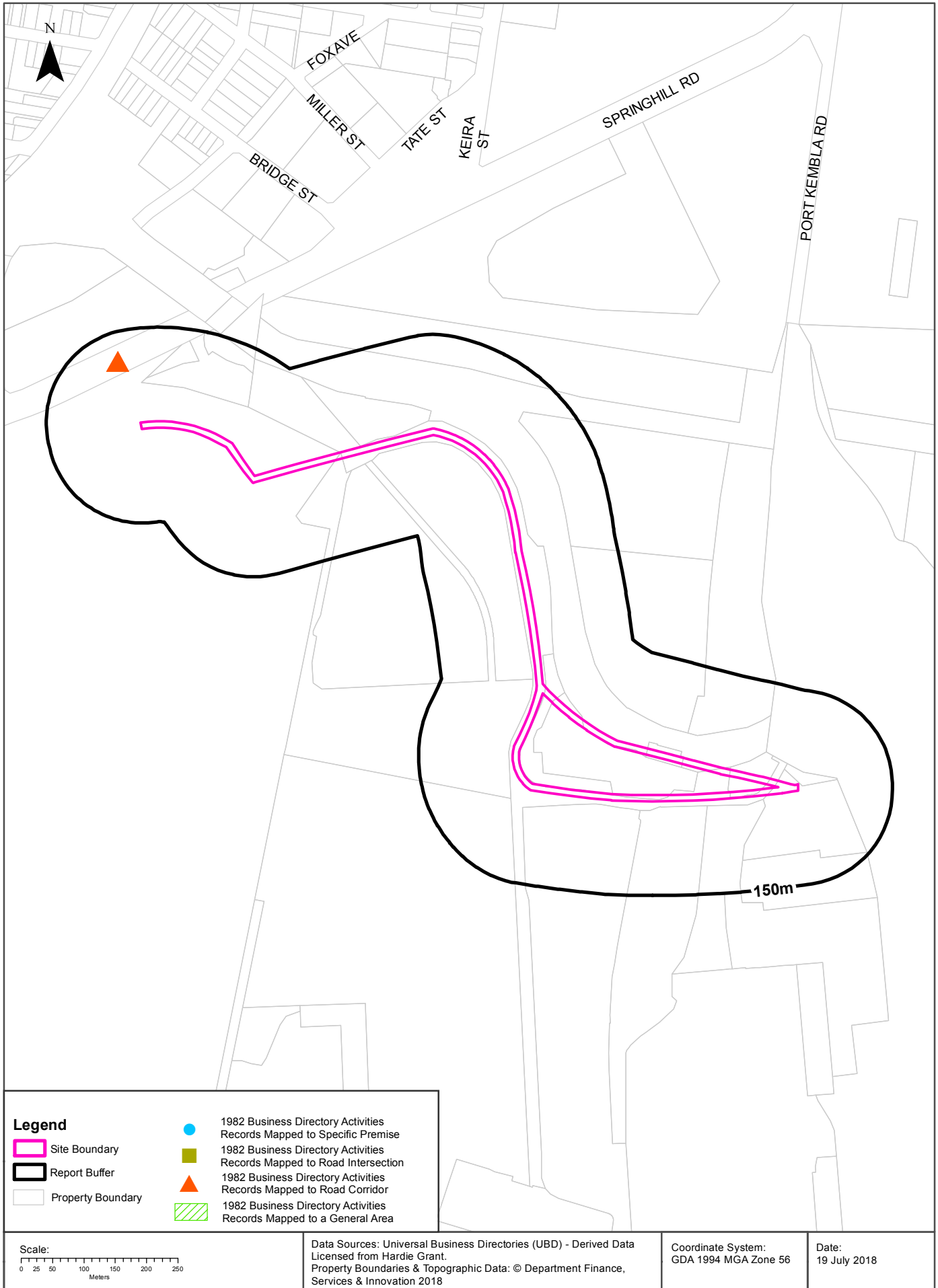
UPSS Sensitive Zones

Proposed Gas Pipeline & Berth 101, Port Kembla, NSW 2505 (Section 4)



1982 Historical Business Directory Records

Proposed Gas Pipeline & Berth 101, Port Kembla, NSW 2505 (Section 4)



Historical Business Directories

Proposed Gas Pipeline & Berth 101, Port Kembla, NSW 2505 (Section 4)

1982 Business Directory Records Premise or Road Intersection Matches

Records from the 1982 UBD Business Directory, mapped to a premise or road intersection, within the dataset buffer:

Business Activity	Premise	Ref No.	Location Confidence	Distance to Feature Point	Direction
N/A	No records in buffer				

Business Directory Content Derived from Universal Business Directories (UBD) - Licensed from Hardie Grant

1982 Business Directory Records Road or Area Matches

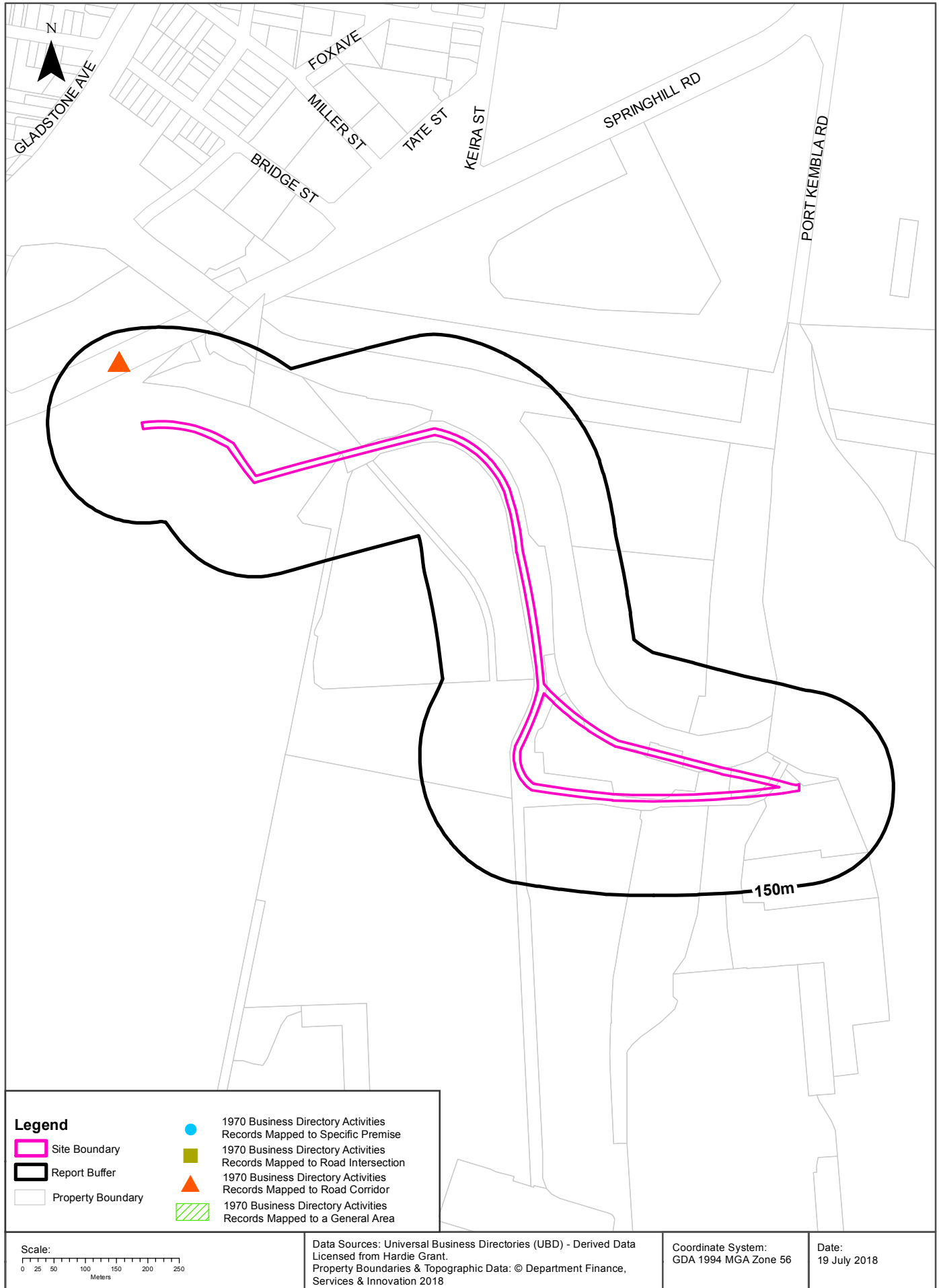
Records from the 1982 UBD Business Directory, mapped to a road or an area, within the dataset buffer. Records are mapped to the road when a building number is not supplied, cannot be found, or the road has been renumbered since the directory was published:

Business Activity	Premise	Ref No.	Location Confidence	Distance to Road Corridor or Area
STEEL ROLLING MILLS	Australian Iron & Steel Pty. Ltd., Springhill Rd., Port Kembla., Wollongong	145157	Road Match	83m
CONCRETE - READY MIXED - SUPPLIERS	Cleary Bros. Concrete, Springhill Rd.. Coniston., Wollongong	140192	Road Match	83m

Business Directory Content Derived from Universal Business Directories (UBD) - Licensed from Hardie Grant

1970 Historical Business Directory Records

Proposed Gas Pipeline & Berth 101, Port Kembla, NSW 2505 (Section 4)



Historical Business Directories

Proposed Gas Pipeline & Berth 101, Port Kembla, NSW 2505 (Section 4)

1970 Business Directory Records Premise or Road Intersection Matches

Records from the 1970 UBD Business Directory, mapped to a premise or road intersection, within the dataset buffer:

Business Activity	Premise	Ref No.	Location Confidence	Distance to Feature Point	Direction
N/A	No records in buffer				

Business Directory Content Derived from Universal Business Directories (UBD) - Licensed from Hardie Grant

1970 Business Directory Records Road or Area Matches

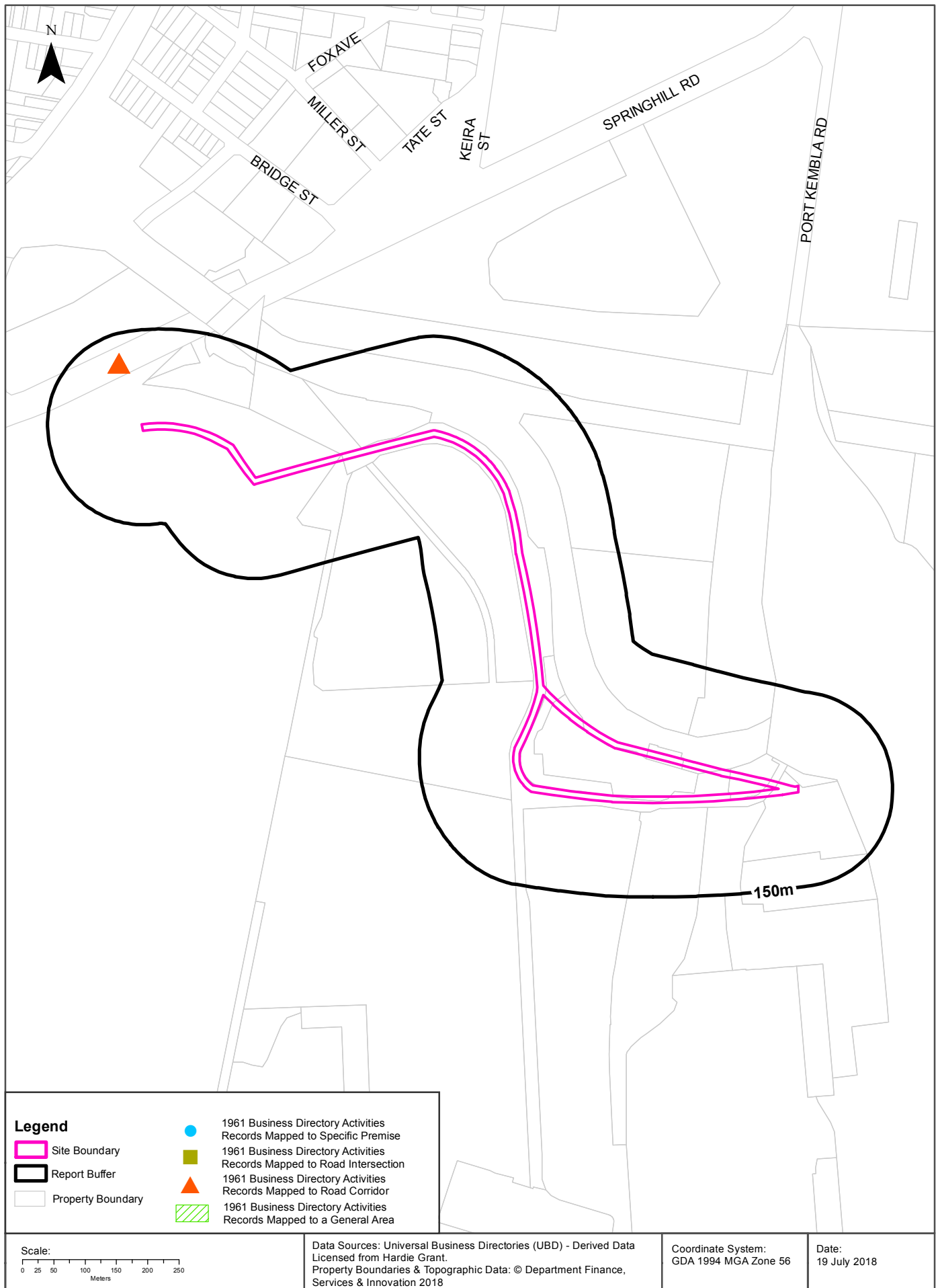
Records from the 1970 UBD Business Directory, mapped to a road or an area, within the dataset buffer. Records are mapped to the road when a building number is not supplied, cannot be found, or the road has been renumbered since the directory was published:

Business Activity	Premise	Ref No.	Location Confidence	Distance to Road Corridor or Area
ELECTRICAL CONTRACTORS-LICENSED	Transfield Pty. Ltd., Springhill Rd., Port Kembla Wollongong	562249	Road Match	83m
ENGINEERS-ELECTRICAL	Transfield Pty. Ltd., Springhill Rd., Port Kembla Wollongong	562484	Road Match	83m

Business Directory Content Derived from Universal Business Directories (UBD) - Licensed from Hardie Grant

1961 Historical Business Directory Records

Proposed Gas Pipeline & Berth 101, Port Kembla, NSW 2505 (Section 4)



Historical Business Directories

Proposed Gas Pipeline & Berth 101, Port Kembla, NSW 2505 (Section 4)

1961 Business Directory Records Premise or Road Intersection Matches

Records from the 1961 UBD Business Directory, mapped to a premise or road intersection, within the dataset buffer:

Business Activity	Premise	Ref No.	Location Confidence	Distance to Feature Point	Direction
N/A	No records in buffer				

Business Directory Content Derived from Universal Business Directories (UBD) - Licensed from Hardie Grant

1961 Business Directory Records Road or Area Matches

Records from the 1961 UBD Business Directory, mapped to a road or an area, within the dataset buffer. Records are mapped to the road when a building number is not supplied, cannot be found, or the road has been renumbered since the directory was published:

Business Activity	Premise	Ref No.	Location Confidence	Distance to Road Corridor or Area
GALVANIZED IRON MANUFACTURERS	Stewarts & Lloyds (Distributors) Pty. Limited., Springhill Rd., Coniston, Wollongong	237099	Road Match	83m
STEEL MERCHANTS-GENERAL	Stewarts & Lloyds (Distributors) Pty. Limited., Springhill Rd., Coniston, Wollongong	241112	Road Match	83m
COPPER TUBING DISTRIBUTORS	Stewarts & Lloyds (Distributors) Pty. Ltd., Springhill Rd., Coniston, Wollongong	235429	Road Match	83m
PIPE & PIPE FITTINGS MFRS./DISTS.	Stewarts & Lloyds (Distributors) Pty. Ltd., Springhill Rd., Coniston, Wollongong	240132	Road Match	83m
STEEL TUBING MFRS. &/OR DISTRIBUTORS	Stewarts & Lloyds (Distributors) Pty. Ltd., Springhill Rd., Coniston, Wollongong	241129	Road Match	83m
TUBE BENDERS	Stewarts & Lloyds Distributors Pty. Ltd., Springhill Rd., Coniston, Wollongong	241493	Road Match	83m
COPPER TUBING DISTRIBUTORS	Stewarts and Lloyds (Distributors) Pty Limited., Springhill Rd., Coniston, Wollongong	235421	Road Match	83m
PIPE & PIPE FITTINGS MFRS./DISTS.	Stewarts and Lloyds (Distributors) Pty Limited., Springhill Rd., Coniston, Wollongong	240127	Road Match	83m
PLASTIC PIPE MANUFACTURERS	Stewarts and Lloyds (Distributors) Pty Limited., Springhill Rd., Coniston, Wollongong	240174	Road Match	83m
STEEL TUBING MFRS. &/OR DISTRIBUTORS	Stewarts and Lloyds (Distributors) Pty Limited., Springhill Rd., Coniston, Wollongong	241127	Road Match	83m
WELDING EQUIPMENT & SUPPLIES MFRS. & DISTRIBUTORS	Stewarts and Lloyds (Distributors) Pty. Limited., Springhill Rd., Coniston, Wollongong	241730	Road Match	83m
PLUMBERS, GASFITTERS & DRAINLAYERS	Stewarts and Lloyds (Distributors) Pty. Ltd., Spring Hill Rd., Coniston, Wollongong	240220	Road Match	83m
ENGINEERS-FABRICATING	Stewarts and Lloyds (Distributors) Pty. Ltd., Springhill Rd., Coniston, Wollongong	236275	Road Match	83m
HARDWARE DEALERS & IRONMONGERS	Stewarts and Lloyds (Distributors) Pty. Ltd., Springhill Rd., Coniston, Wollongong	237634	Road Match	83m
ELECTRICAL CONTRACTORS-LICENSED	Transfield Pty. Ltd., Springhill Rd., Port Kembla, Wollongong	236004	Road Match	83m
ENGINEERS-ELECTRICAL	Transfield Pty. Ltd., Springhill Rd., Port Kembla, Wollongong	236233	Road Match	83m

Business Directory Content Derived from Universal Business Directories (UBD) - Licensed from Hardie Grant

Historical Business Directories

Proposed Gas Pipeline & Berth 101, Port Kembla, NSW 2505 (Section 4)

1950 Business Directory Records Premise or Road Intersection Matches

Records from the 1950 UBD Business Directory, mapped to a premise or road intersection, within the dataset buffer:

Business Activity	Premise	Ref No.	Location Confidence	Distance to Feature Point	Direction
N/A	No records in buffer				

Business Directory Content Derived from Universal Business Directories (UBD) - Licensed from Hardie Grant

1950 Business Directory Records Road or Area Matches

Records from the 1950 UBD Business Directory, mapped to a road or an area, within the dataset buffer. Records are mapped to the road when a building number is not supplied, cannot be found, or the road has been renumbered since the directory was published:

Business Activity	Premise	Ref No.	Location Confidence	Distance to Road Corridor or Area
N/A	No records in buffer			

Business Directory Content Derived from Universal Business Directories (UBD) - Licensed from Hardie Grant

Historical Business Directories

Proposed Gas Pipeline & Berth 101, Port Kembla, NSW 2505 (Section 4)

Dry Cleaners, Motor Garages & Service Stations Premise or Road Intersection Matches

Dry Cleaners, Motor Garages & Service Stations from UBD Business Directories, mapped to a premise or road intersection, within the dataset buffer:

Business Activity	Premise	Ref No.	Year	Location Confidence	Distance to Feature Point	Direction
N/A	No records in buffer					

Business Directory Content Derived from Universal Business Directories (UBD) - Licensed from Hardie Grant

Historical Business Directories

Proposed Gas Pipeline & Berth 101, Port Kembla, NSW 2505 (Section 4)

Dry Cleaners, Motor Garages & Service Stations Road or Area Matches

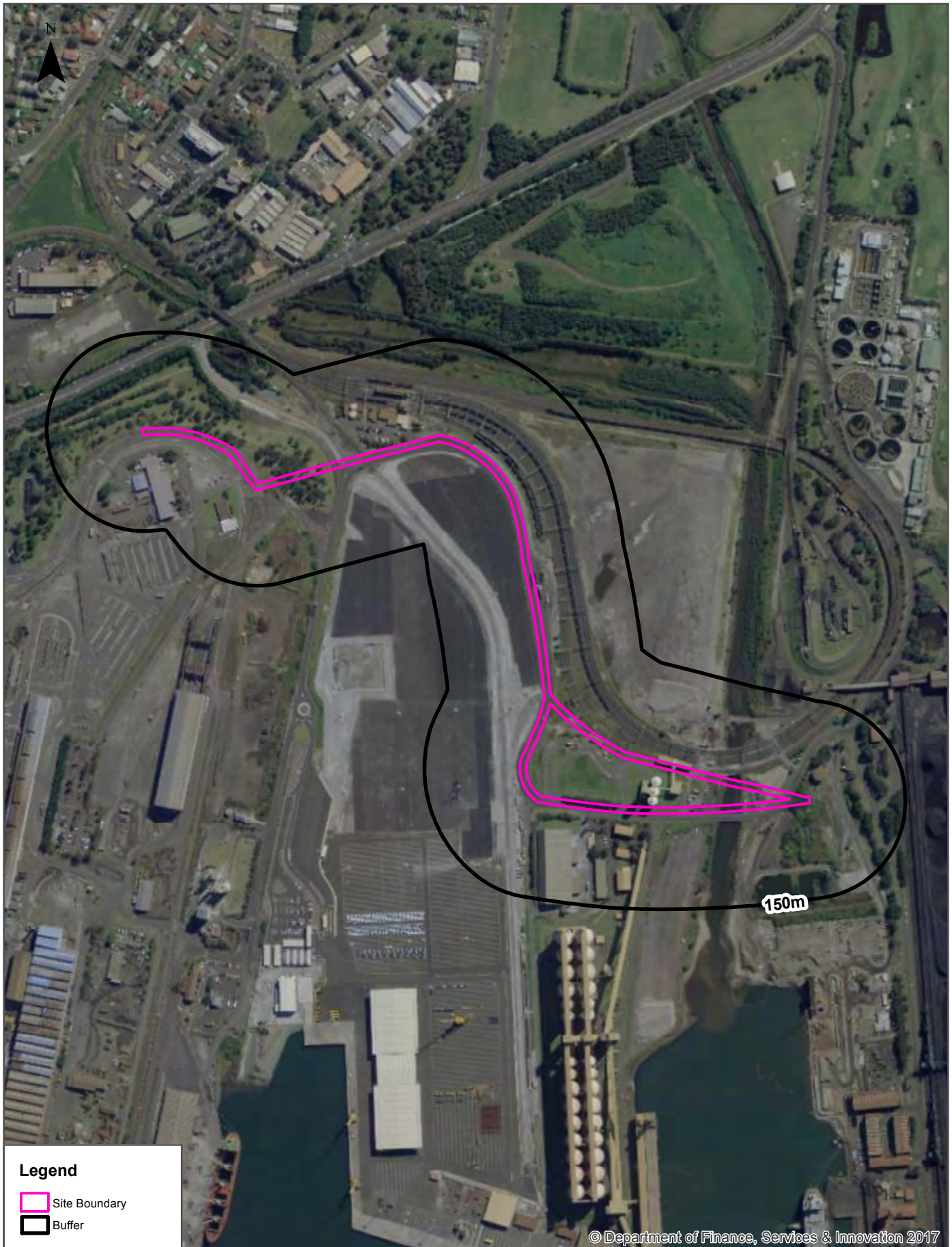
Dry Cleaners, Motor Garages & Service Stations from UBD Business Directories, mapped to a road or an area, within the dataset buffer. Records are mapped to the road when a building number is not supplied, cannot be found, or the road has been renumbered since the directory was published:

Business Activity	Premise	Ref No.	Year	Location Confidence	Distance to Road Corridor or Area
MOTOR GARAGES &/OR ENGINEERS &/OR SERVICE STATIONS	Wilhelm, B. Automotive, Keira St., Wollongong	143373	1982	Road Match	403m
MOTOR GARAGES &/OR ENGINEERS	BP Coniston Service Station, Gladstone Ave., Coniston Wollongong	565463	1970	Road Match	459m
MOTOR SERVICE STATIONS- PETROL, OILS, Etc.	BP Coniston Service Station, Gladstone Ave., Coniston Wollongong	565736	1970	Road Match	459m
MOTOR GARAGES &/OR ENGINEERS &/OR SERVICE STATIONS	Golf Course Service Station, 112 Auburn St., Wollongong	143285	1982	Road Match	500m

Business Directory Content Derived from Universal Business Directories (UBD) - Licensed from Hardie Grant

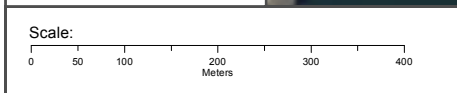
Aerial Imagery 2016

Proposed Gas Pipeline & Berth 101, Port Kembla, NSW 2505 (Section 4)



Legend

- Site Boundary
- Buffer



Data Sources: Aerial Imagery © Department Finance, Services & Innovation

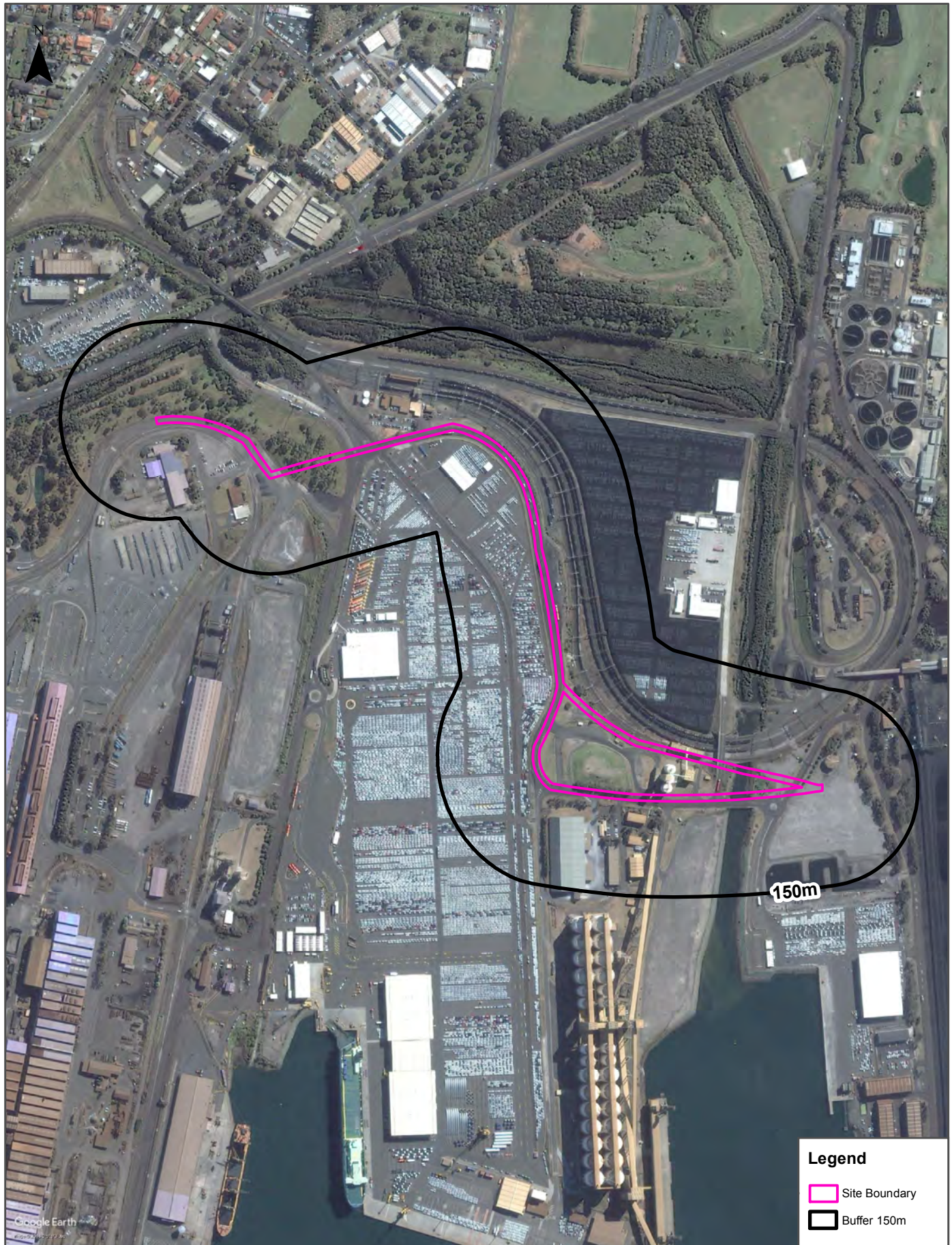
Coordinate System:
GDA 1994 MGA Zone 56

Date: 19 July 2018



© Department of Finance, Services & Innovation 2017

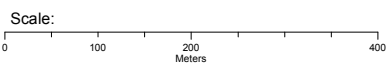
Aerial Imagery 2013

Proposed Gas Pipeline & Berth 101, Port Kembla, NSW 2505 (Section 4)



Legend

-  Site Boundary
-  Buffer 150m



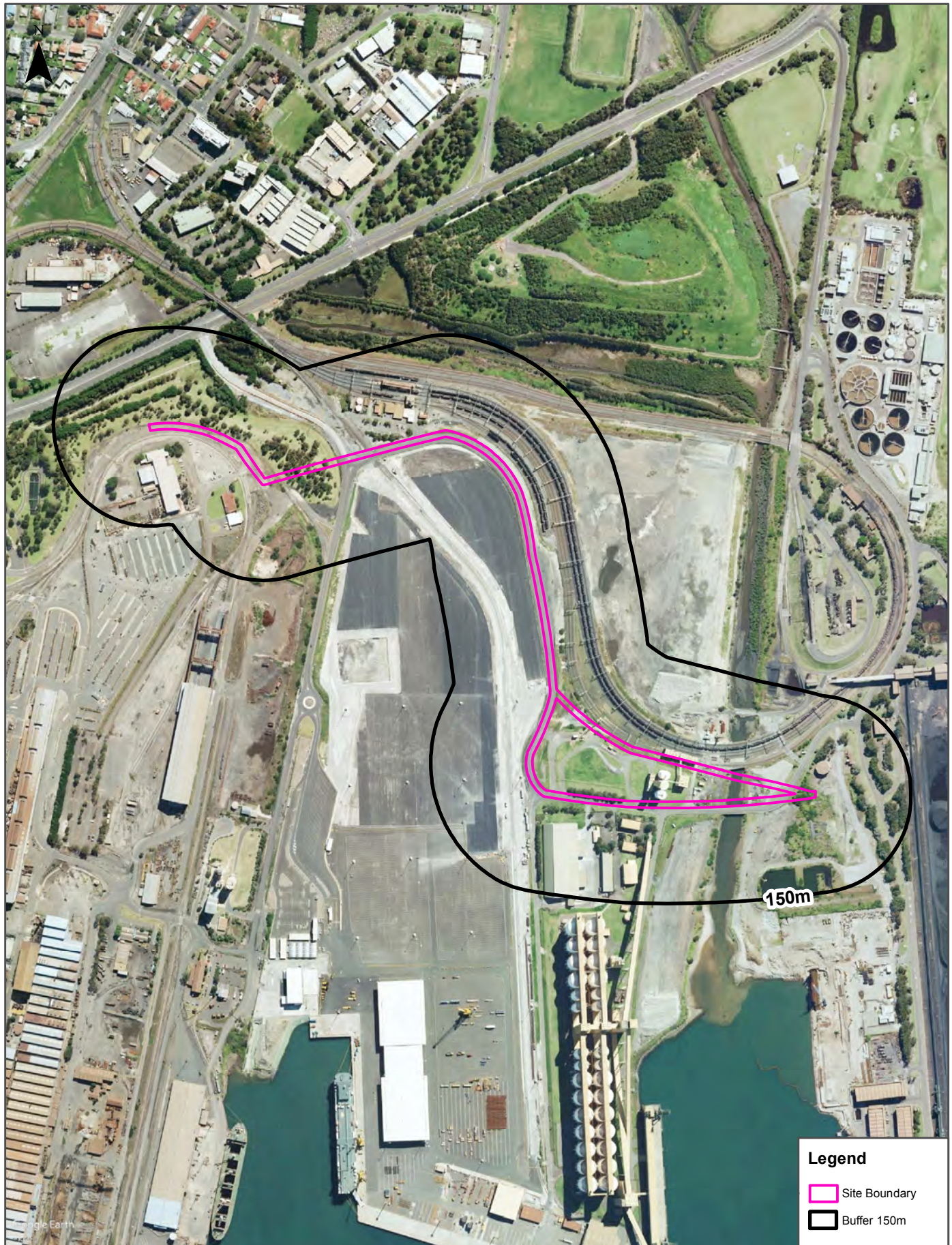
Data Source Aerial Imagery: © 2018 Google Inc, used with permission. Google and the Google logo are registered trademarks of Google Inc.

Coordinate System:
GDA 1994 MGA Zone 56

Date: 17 July 2018



Aerial Imagery 2008

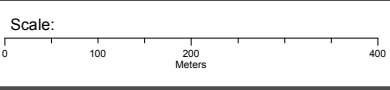
Proposed Gas Pipeline & Berth 101, Port Kembla, NSW 2505 (Section 4)



150m

Legend

-  Site Boundary
-  Buffer 150m



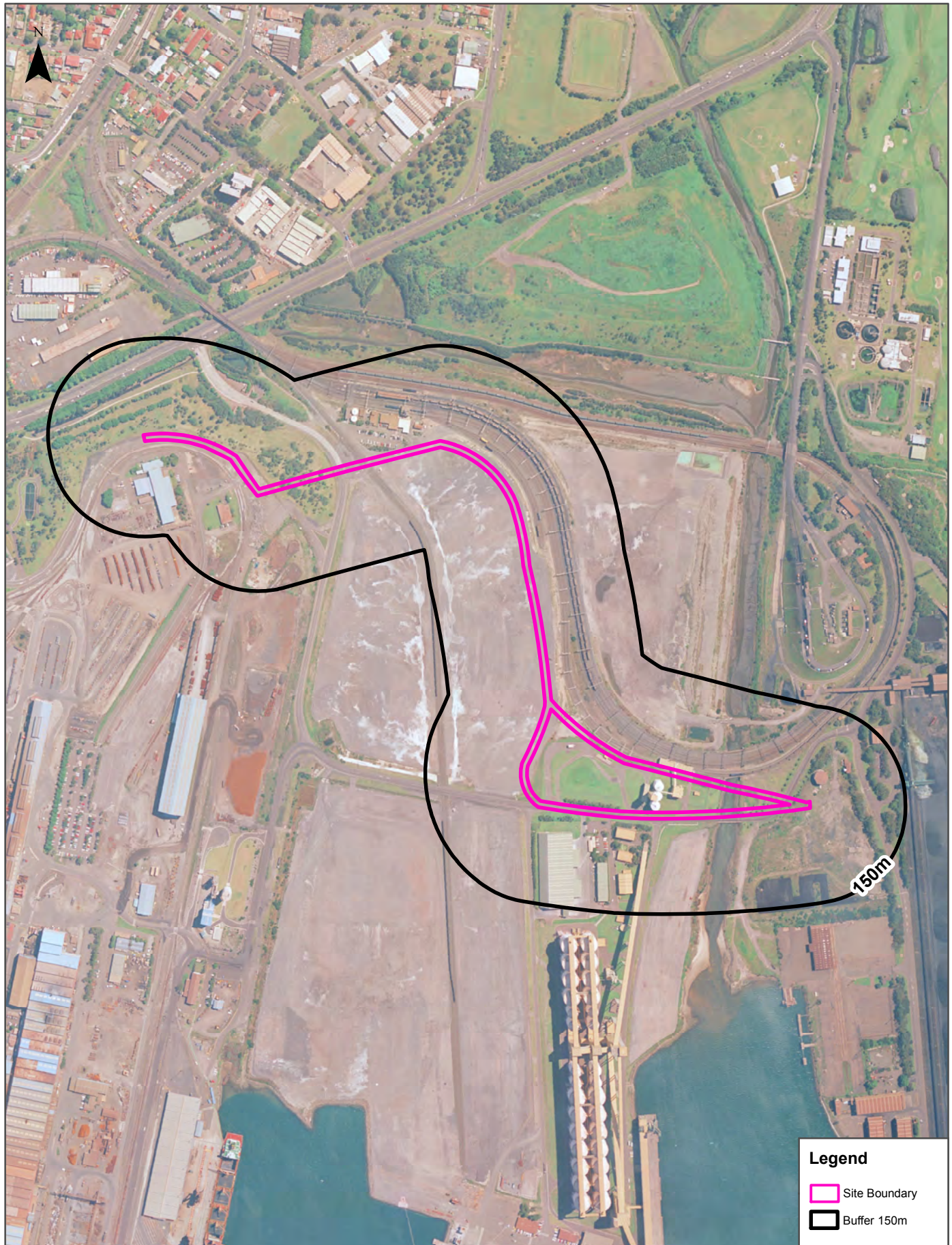
Data Source Aerial Imagery: © 2018 Google Inc, used with permission. Google and the Google logo are registered trademarks of Google Inc.

Coordinate System:
GDA 1994 MGA Zone 56

Date: 17 July 2018

Aerial Imagery 2002

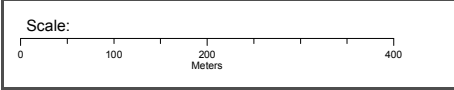
Proposed Gas Pipeline & Berth 101, Port Kembla, NSW 2505 (Section 4)



150m

Legend

- Site Boundary
- Buffer 150m



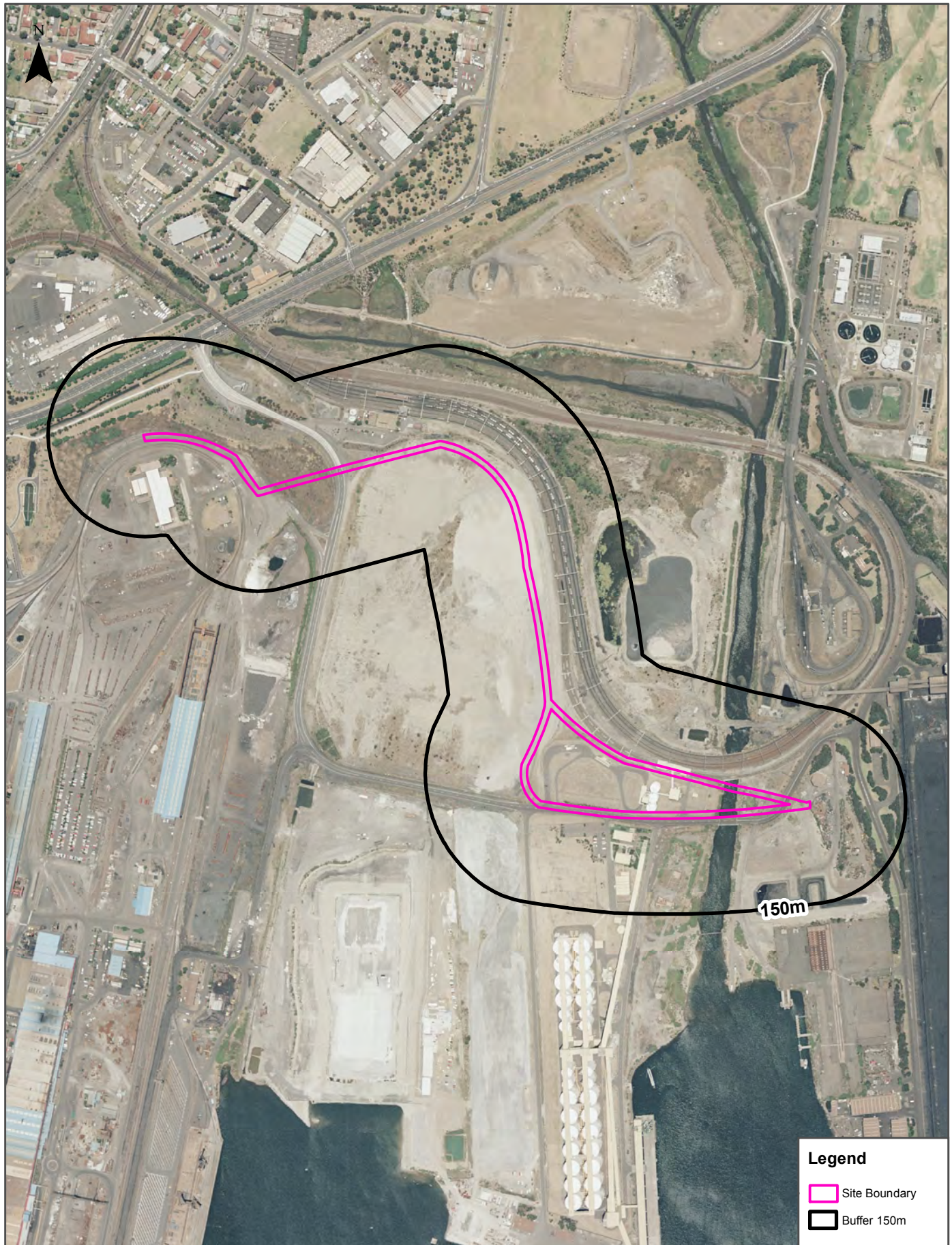
Data Source Aerial Imagery:
© NSW Department Finance, Services & Innovation

Coordinate System:
GDA 1994 MGA Zone 56



Date: 20 July 2018

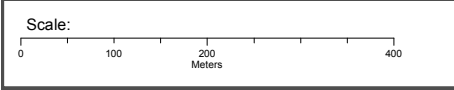
Aerial Imagery 1994

Proposed Gas Pipeline & Berth 101, Port Kembla, NSW 2505 (Section 4)



Legend

-  Site Boundary
-  Buffer 150m



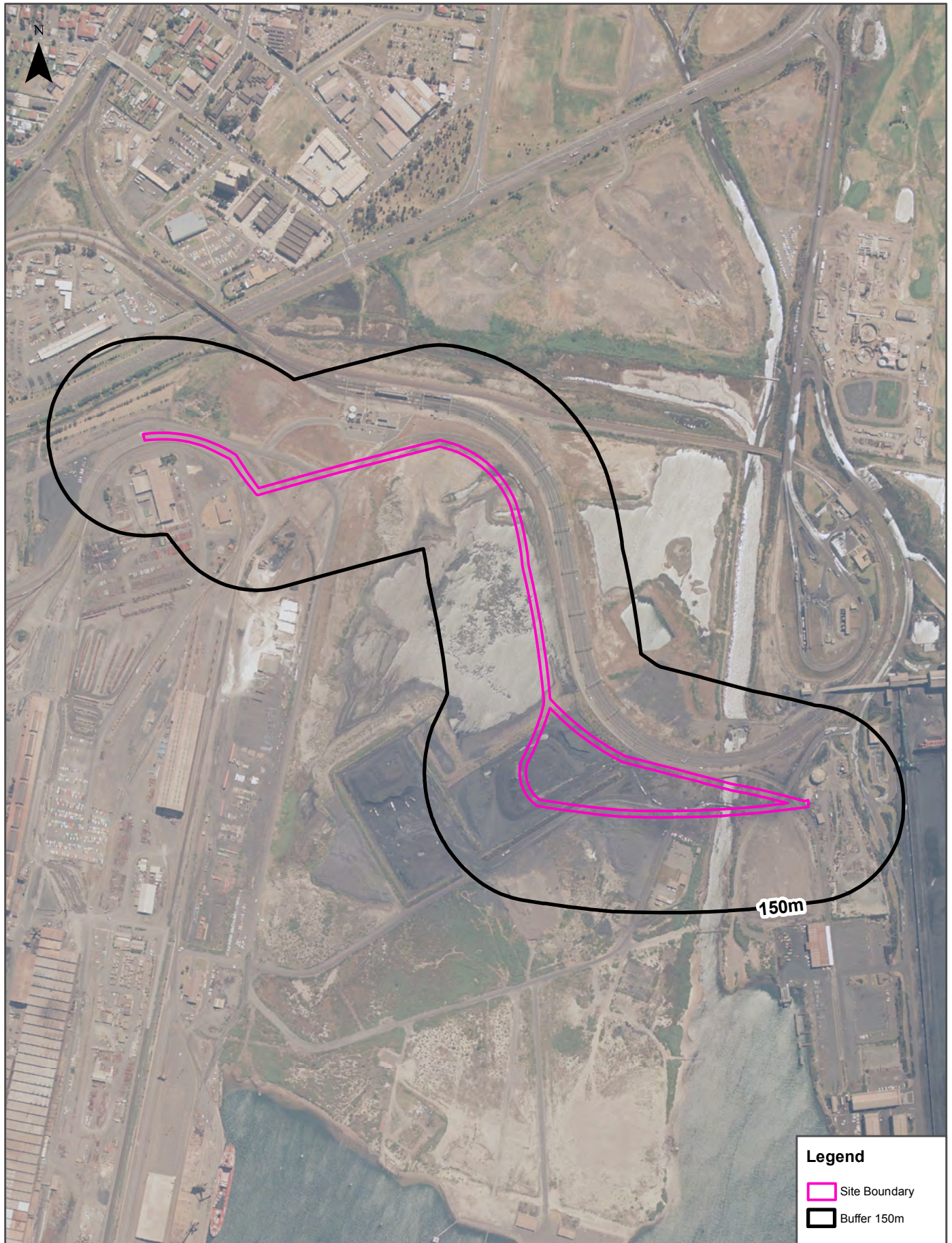
Data Source Aerial Imagery:
© NSW Department Finance, Services & Innovation

Coordinate System:
GDA 1994 MGA Zone 56



Date: 17 July 2018

Aerial Imagery 1984

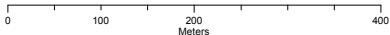
Proposed Gas Pipeline & Berth 101, Port Kembla, NSW 2505 (Section 4)



Legend

-  Site Boundary
-  Buffer 150m

Scale:



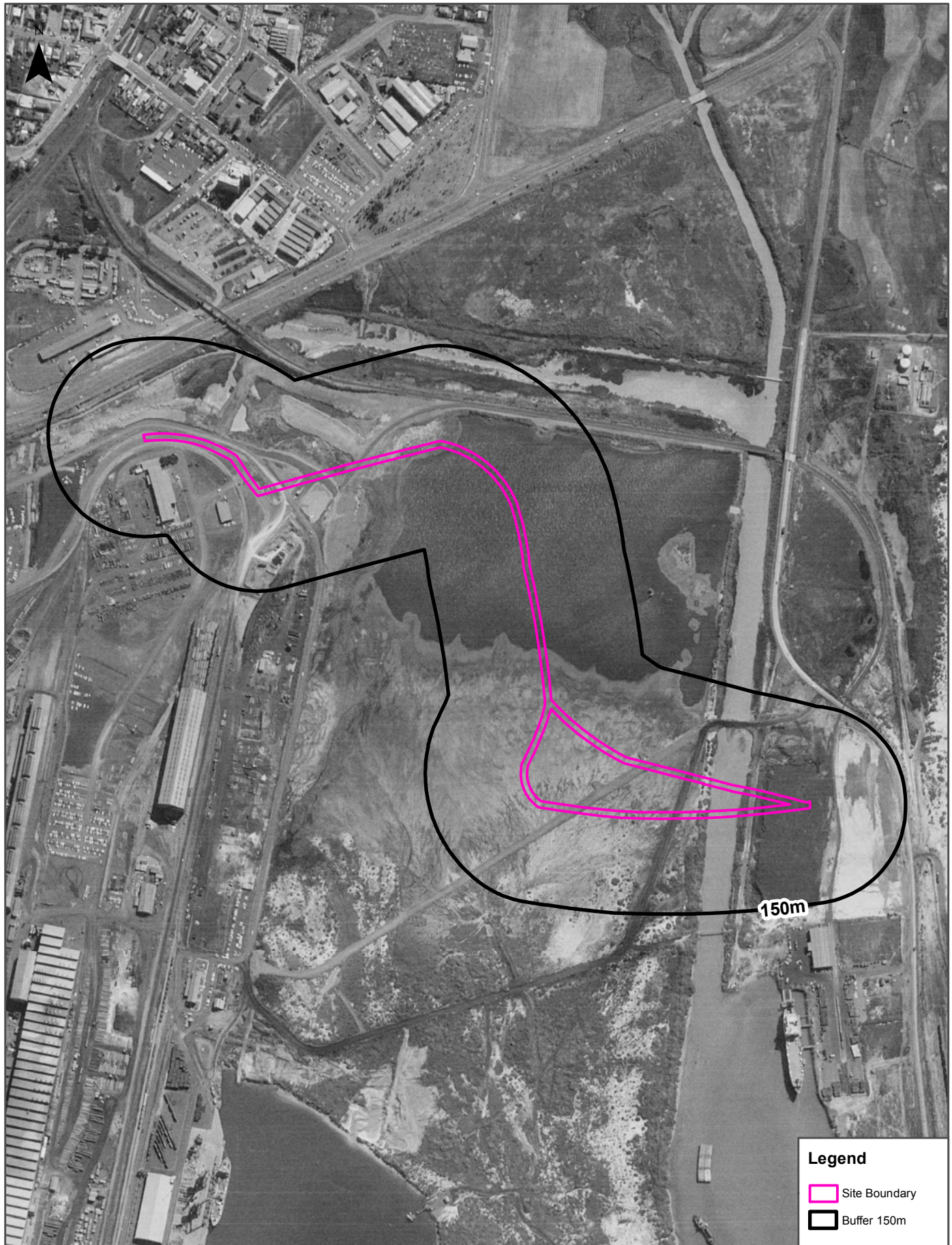
Data Source Aerial Imagery:
© NSW Department Finance, Services & Innovation

Coordinate System:
GDA 1994 MGA Zone 56



Date: 17 July 2018

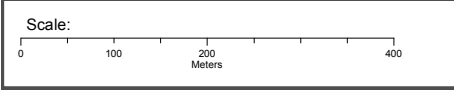
Aerial Imagery 1975

Proposed Gas Pipeline & Berth 101, Port Kembla, NSW 2505 (Section 4)



Legend

-  Site Boundary
-  Buffer 150m



Data Source Aerial Imagery:
© NSW Department Finance, Services & Innovation



Coordinate System:
GDA 1994 MGA Zone 56

Date: 17 July 2018

Aerial Imagery 1961

Proposed Gas Pipeline & Berth 101, Port Kembla, NSW 2505 (Section 4)



Legend	
	Site Boundary
	Buffer 150m

Scale: 0 100 200 400 Meters

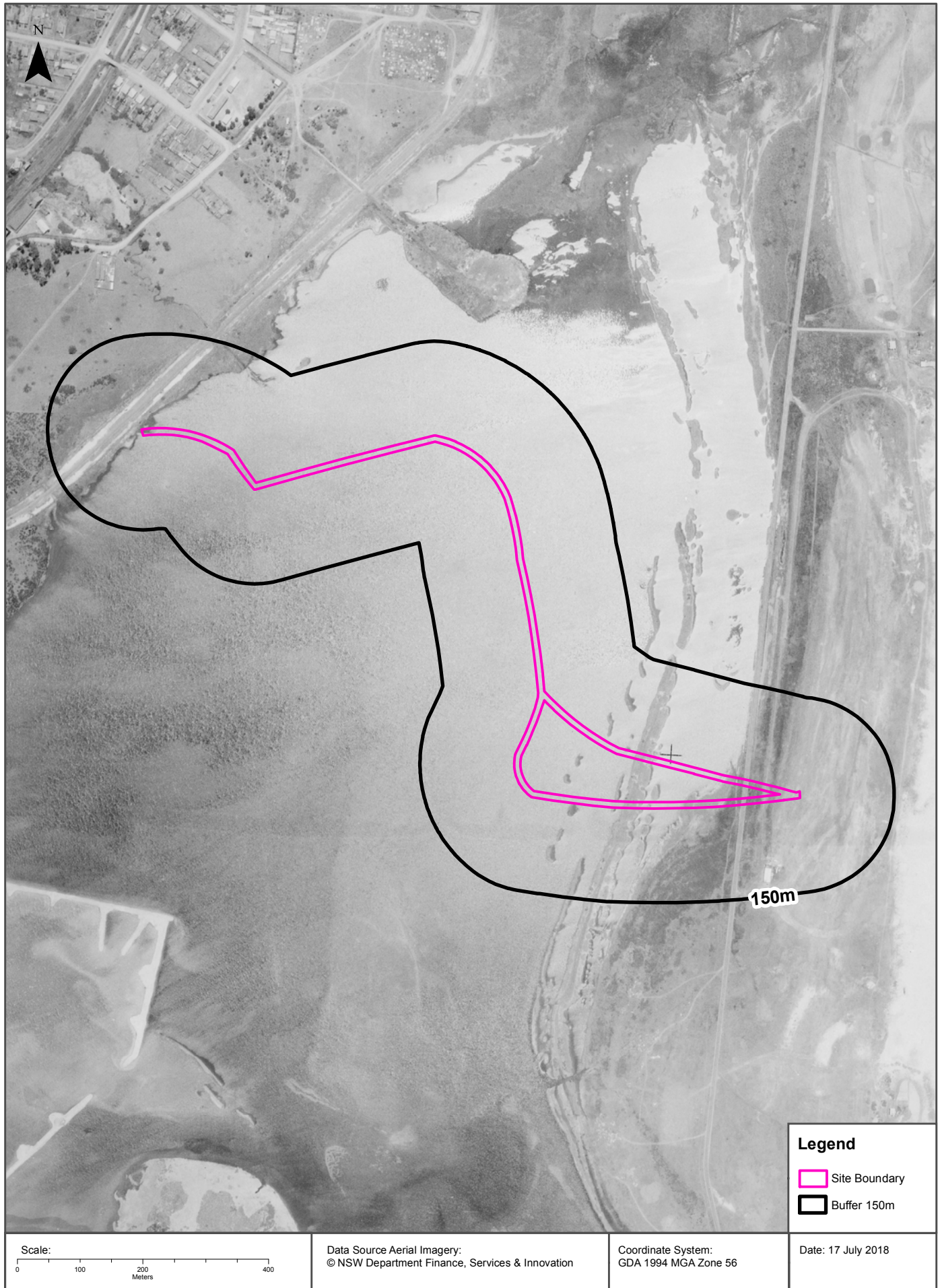
Data Source Aerial Imagery: © NSW Department Finance, Services & Innovation

Coordinate System: GDA 1994 MGA Zone 56

Date: 17 July 2018

Aerial Imagery 1951

Proposed Gas Pipeline & Berth 101, Port Kembla, NSW 2505 (Section 4)



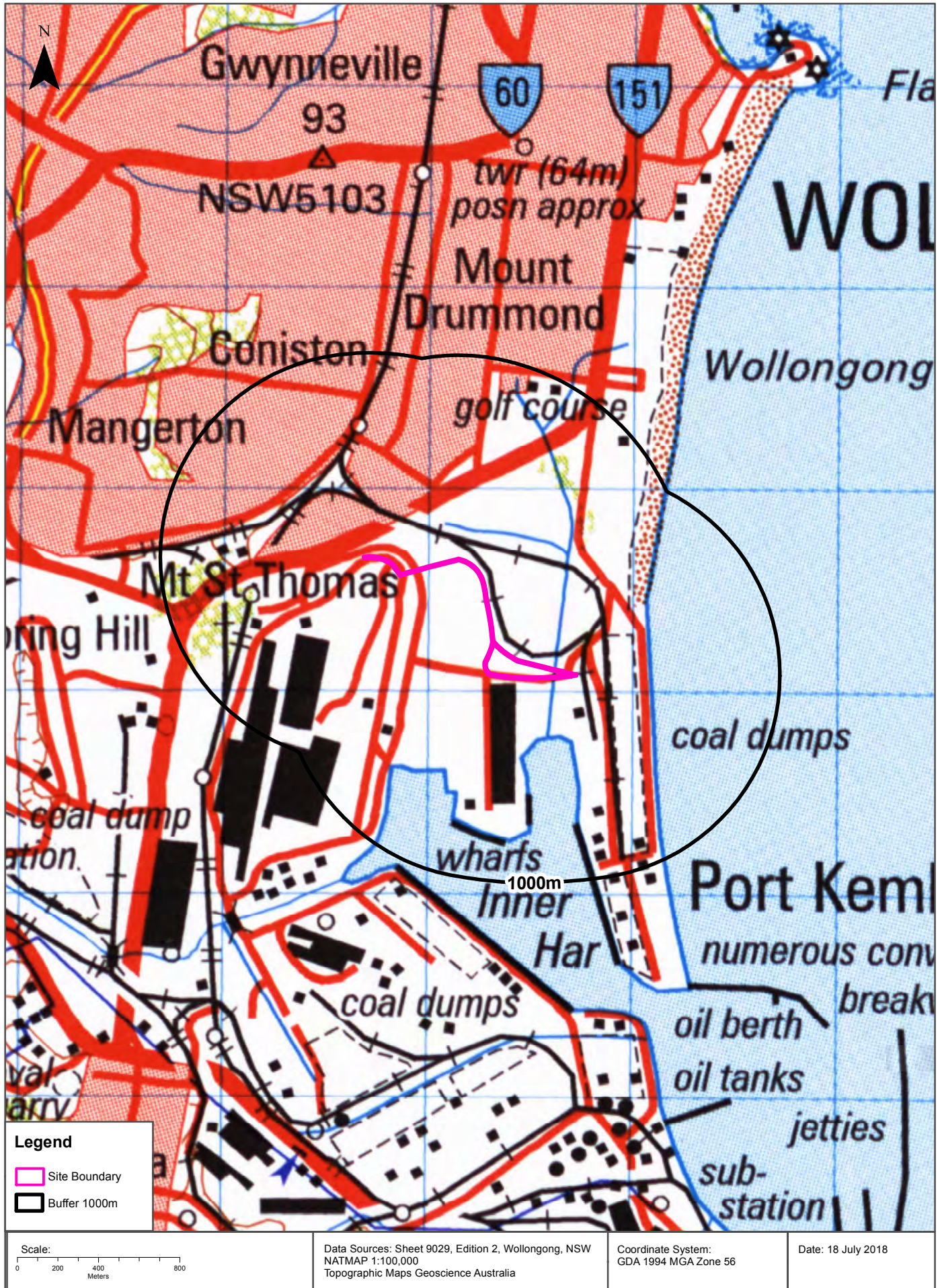
Topographic Map 2015

Proposed Gas Pipeline & Berth 101, Port Kembla, NSW 2505 (Section 4)



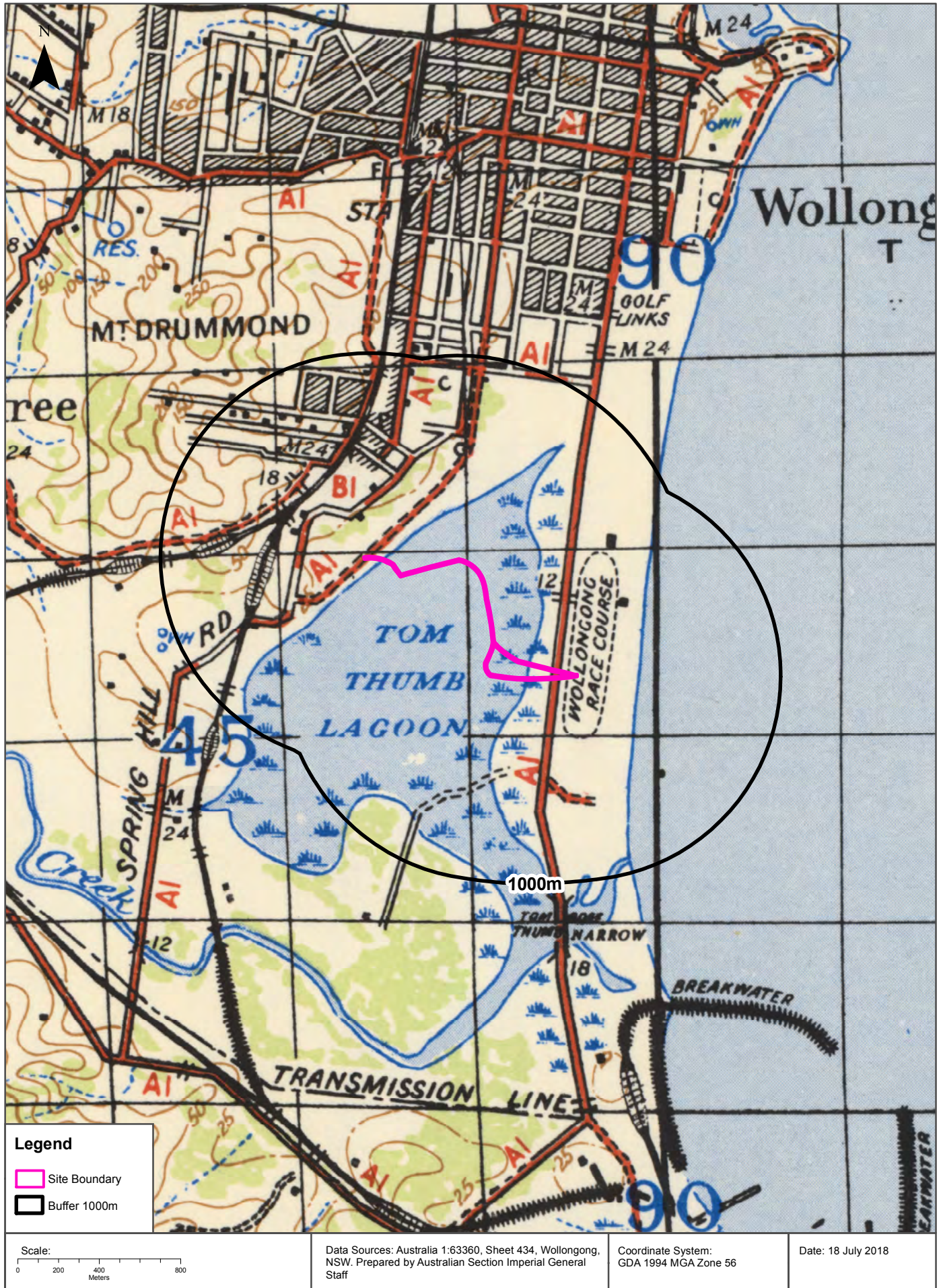
Historical Map 1998

Proposed Gas Pipeline & Berth 101, Port Kembla, NSW 2505 (Section 4)



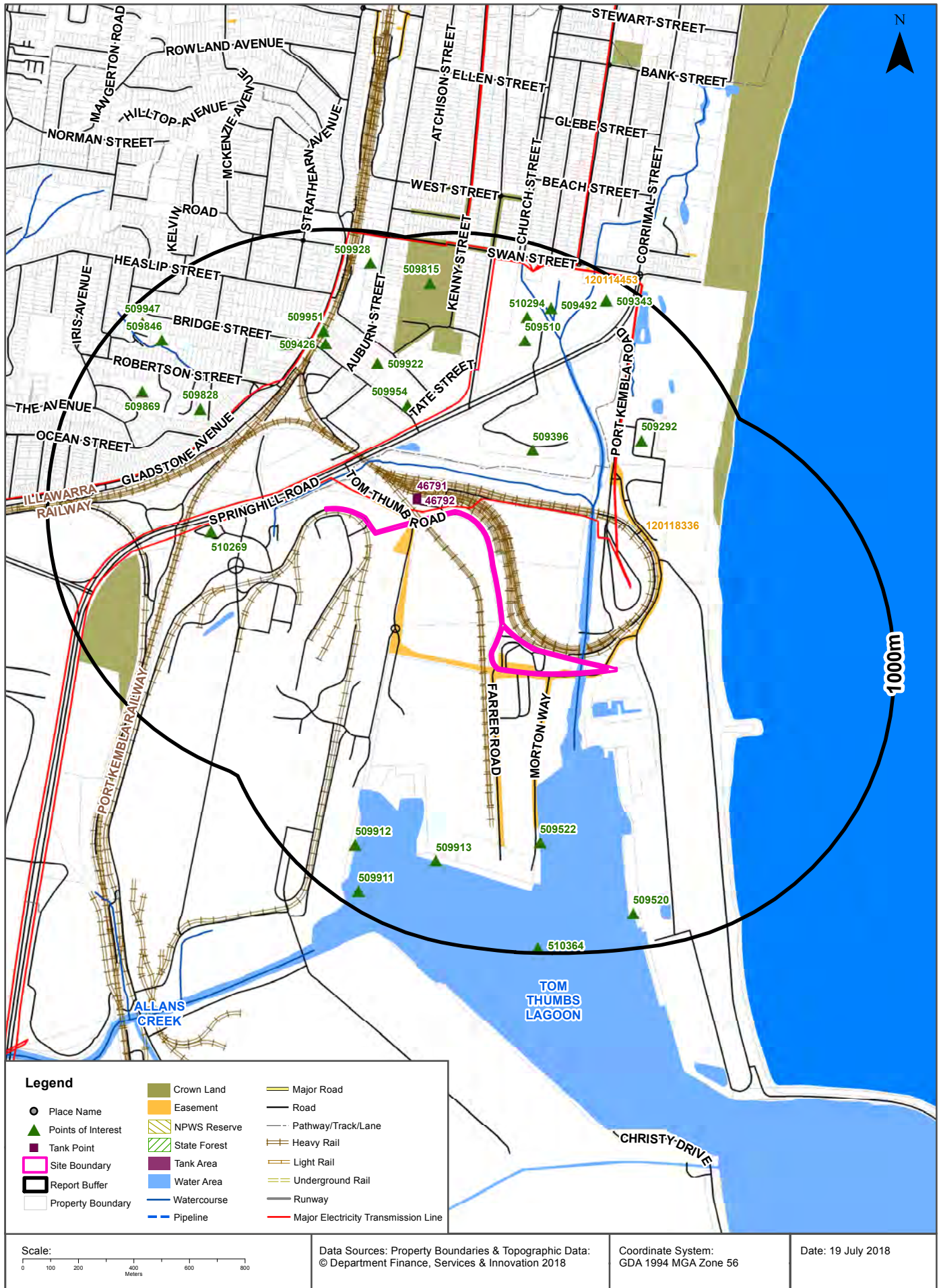
Historical Map 1942

Proposed Gas Pipeline & Berth 101, Port Kembla, NSW 2505 (Section 4)



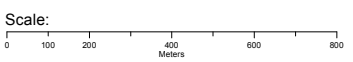
Topographic Features

Proposed Gas Pipeline & Berth 101, Port Kembla, NSW 2505 (Section 4)



Legend

- Place Name
- Points of Interest
- Tank Point
- Site Boundary
- Report Buffer
- Property Boundary
- Crown Land
- Easement
- NPWS Reserve
- State Forest
- Tank Area
- Water Area
- Watercourse
- Pipeline
- Major Road
- Road
- Pathway/Track/Lane
- Heavy Rail
- Light Rail
- Underground Rail
- Runway
- Major Electricity Transmission Line



Data Sources: Property Boundaries & Topographic Data:
© Department Finance, Services & Innovation 2018

Coordinate System:
GDA 1994 MGA Zone 56

Date: 19 July 2018

Topographic Features

Proposed Gas Pipeline & Berth 101, Port Kembla, NSW 2505 (Section 4)

Points of Interest

What Points of Interest exist within the dataset buffer?

Map Id	Feature Type	Label	Distance	Direction
509396	Lookout	AUSTRALIA'S INDUSTRY WORLD LOOKOUT	325m	North
509954	Medical Centre	CONISTON MENTAL HEALTH SERVICES	408m	North West
510269	Community Facility	BHP VISITORS CENTRE	420m	West
509922	Primary School	CONISTON PUBLIC SCHOOL	534m	North West
509828	Park	Park	573m	North West
509426	Community Facility	CONISTON COMMUNITY CENTRE	589m	North West
509901	Suburb	CONISTON	600m	North West
509802	Post Office	CONISTON POST OFFICE	603m	North West
509522	Wharf	Wharf	604m	South
509951	Railway Station	CONISTON RAILWAY STATION	636m	North West
509292	Sewage Works	Sewage Works	650m	North East
509510	Sports Field	SOCCER FIELDS	658m	North
509913	Wharf	Wharf	722m	South
510294	Community Facility	CONISTON LIONS UNITED SOCCER CLUB	739m	North
509869	Park	Park	779m	North West
509492	Park	J J KELLY PARK	802m	North
509912	Wharf	Wharf	812m	South West
509815	Cemetery	WOLLONGONG CEMETERY	823m	North
509846	Park	Park	843m	North West
509520	Wharf	Wharf	875m	South East
509928	Post Office	WOLLONGONG POST BUSINESS CENTRE	886m	North
509343	Sports Field	VIKING RUGBY FIELD	917m	North
509947	Community Home	WARRIGAL CARE CONISTON	935m	North West
509911	Wharf	Wharf	940m	South West
510364	Natural Waterbody	TOM THUMBS LAGOON	984m	South

Topographic Data Source: © Land and Property Information (2015)

Creative Commons 3.0 © Commonwealth of Australia <http://creativecommons.org/licenses/by/3.0/au/deed.en>

Topographic Features

Proposed Gas Pipeline & Berth 101, Port Kembla, NSW 2505 (Section 4)

Tanks (Areas)

What are the Tank Areas located within the dataset buffer?

Note. The large majority of tank features provided by LPI are derived from aerial imagery & are therefore primarily above ground tanks.

Map Id	Tank Type	Status	Name	Feature Currency	Distance	Direction
	No records in buffer					

Tanks (Points)

What are the Tank Points located within the dataset buffer?

Note. The large majority of tank features provided by LPI are derived from aerial imagery & are therefore primarily above ground tanks.

Map Id	Tank Type	Status	Name	Feature Currency	Distance	Direction
46792	Undefined	Operational		09/04/2006	68m	North West
46791	Undefined	Operational		09/04/2006	79m	North West

Tanks Data Source: © Land and Property Information (2015)

Creative Commons 3.0 © Commonwealth of Australia <http://creativecommons.org/licenses/by/3.0/au/deed.en>

Major Easements

What Major Easements exist within the dataset buffer?

Note. Easements provided by LPI are not at the detail of local governments. They are limited to major easements such as Right of Carriageway, Electrical Lines (66kVa etc.), Easement to drain water & Significant subterranean pipelines (gas, water etc.).

Map Id	Easement Class	Easement Type	Easement Width	Distance	Direction
120118336	Primary	Undefined		0m	Onsite
120114453	Primary	Undefined		977m	North

Easements Data Source: © Land and Property Information (2015)

Creative Commons 3.0 © Commonwealth of Australia <http://creativecommons.org/licenses/by/3.0/au/deed.en>

Topographic Features

Proposed Gas Pipeline & Berth 101, Port Kembla, NSW 2505 (Section 4)

State Forest

What State Forest exist within the dataset buffer?

State Forest Number	State Forest Name	Distance	Direction
N/A	No records in buffer		

State Forest Data Source: © Land and Property Information (2015)

Creative Commons 3.0 © Commonwealth of Australia <http://creativecommons.org/licenses/by/3.0/au/deed.en>

National Parks and Wildlife Service Reserves

What NPWS Reserves exist within the dataset buffer?

Reserve Number	Reserve Type	Reserve Name	Gazetted Date	Distance	Direction
N/A	No records in buffer				

NPWS Data Source: © Land and Property Information (2015)

Creative Commons 3.0 © Commonwealth of Australia <http://creativecommons.org/licenses/by/3.0/au/deed.en>

Elevation Contours (m AHD)

Proposed Gas Pipeline & Berth 101, Port Kembla, NSW 2505 (Section 4)



Legend

- Elevation Contour (m AHD)
- Site Boundary
- Report Buffer
- Property Boundary

Accuracy & Currency: This contour data can be up to 0.4 of the contour interval out in height and must therefore not be used for any design or engineering works, but only as a general guide to topography. Gaps may occur along contour lines due to vertical topography, obscured topography in the source photography such as buildings, dense vegetation or dead ground, or the fact that original buildings have been replaced in the intervening thirty years since the original contour capture.



Data Sources: Property Boundaries & Topographic Data:
© Department Finance, Services & Innovation 2018

Coordinate System:
GDA 1994 MGA Zone 56

Date: 19 July 2018

Hydrogeology & Groundwater

Proposed Gas Pipeline & Berth 101, Port Kembla, NSW 2505 (Section 4)

Hydrogeology

Description of aquifers on-site:

Description
Fractured or fissured, extensive aquifers of low to moderate productivity

Description of aquifers within the dataset buffer:

Description
Fractured or fissured, extensive aquifers of low to moderate productivity

Hydrogeology Map of Australia : Commonwealth of Australia (Geoscience Australia)
Creative Commons 3.0 © Commonwealth of Australia <http://creativecommons.org/licenses/by/3.0/au/deed.en>

Botany Groundwater Management Zones

Groundwater management zones relating to the Botany Sand Beds aquifer within the dataset buffer:

Management Zone No.	Restriction	Distance	Direction
N/A	No records in buffer		

Botany Groundwater Management Zones Data Source : NSW Department of Primary Industries