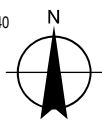


Map Projection: Transverse Mercator
Horizontal Datum: GDA 1994
Grid: GDA 1994 MGA Zone 56

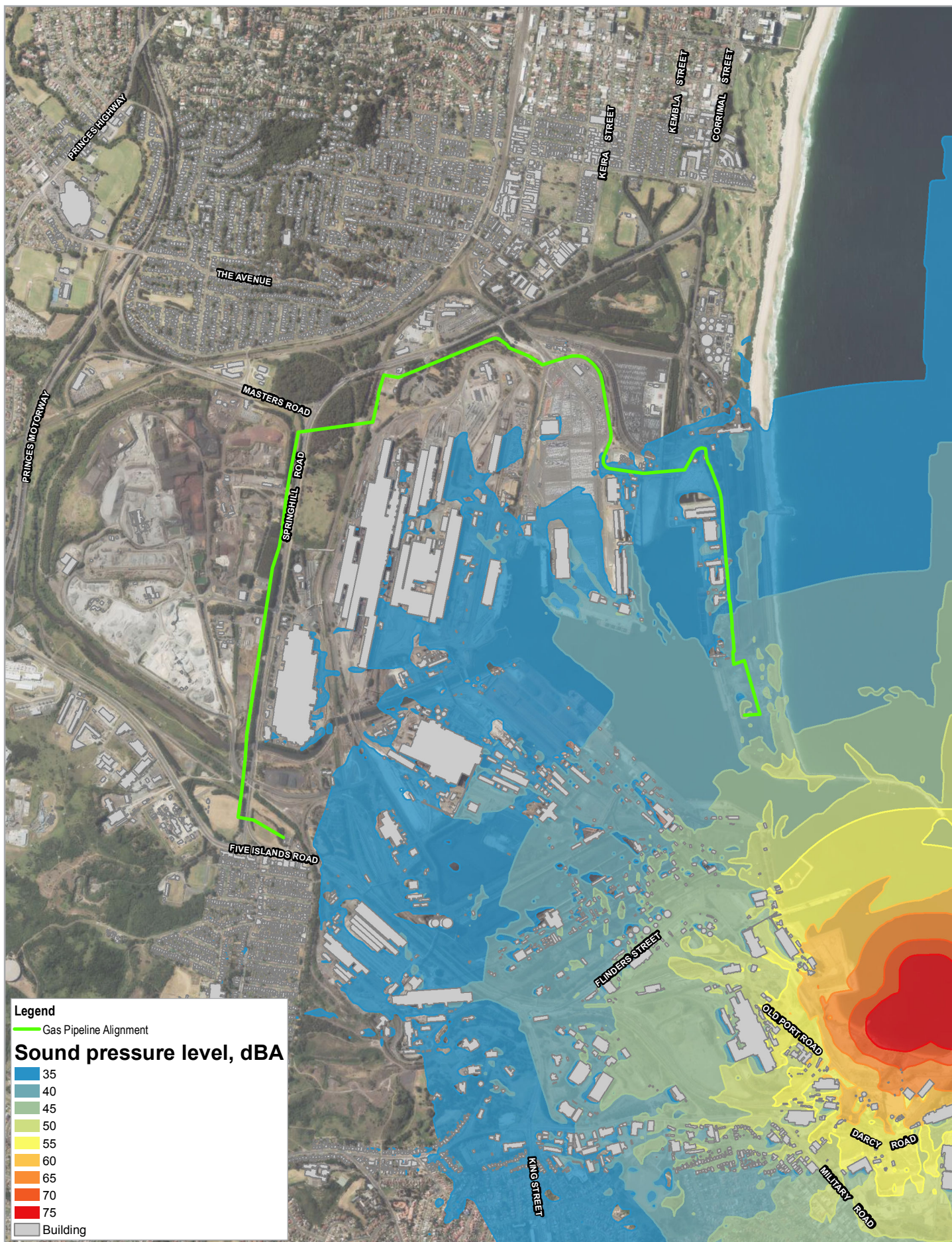


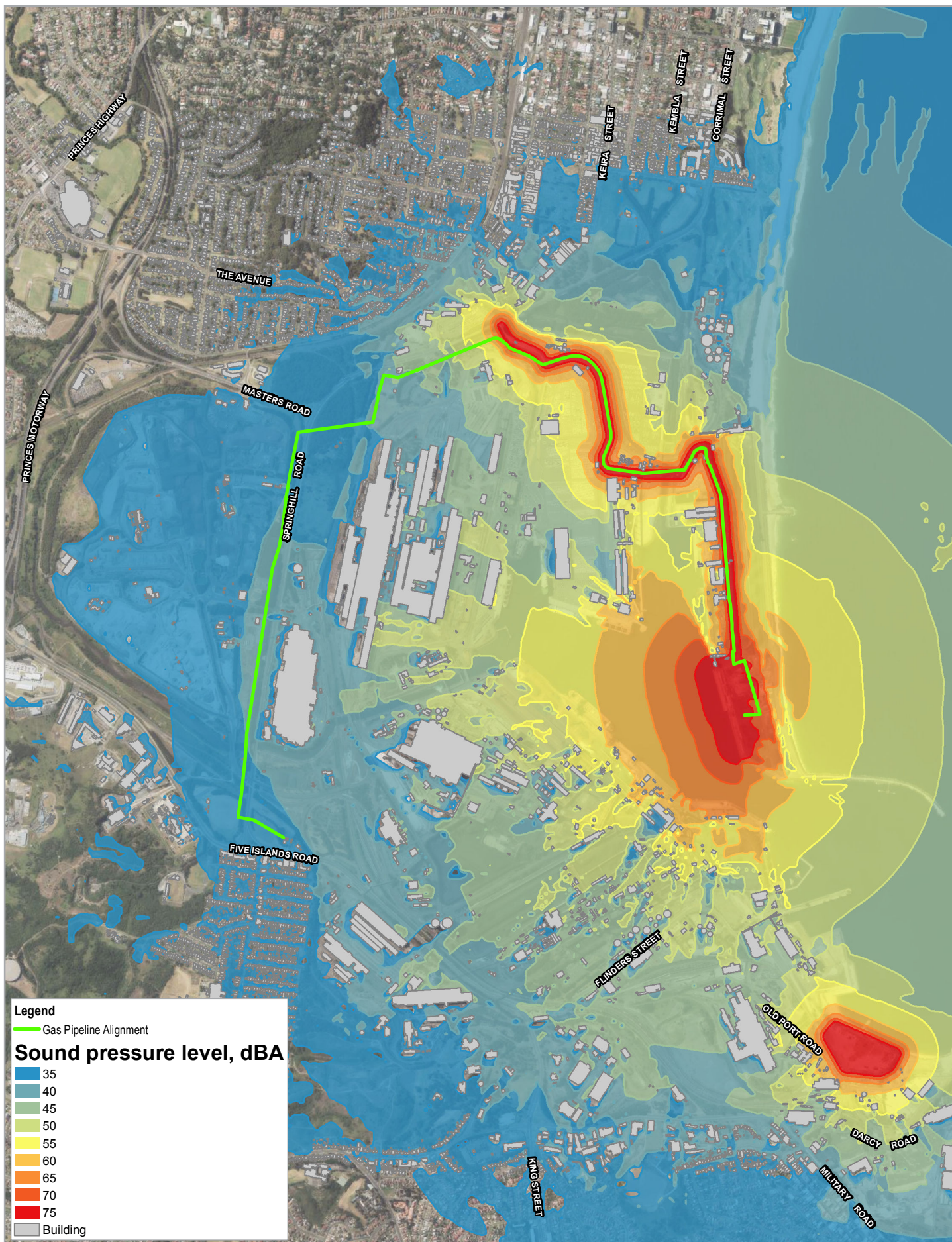
Australian Industrial Energy
Port Kembla Gas Terminal

Predicted construction noise levels,
dBA – CS2.4 (Perimeter bund)

Project No. 21-27477
Revision No. A
Date 31 Oct 2018

Figure F10

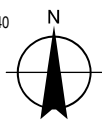




Paper Size ISO A4

0 260 520 780 1,040

Metres



Map Projection: Transverse Mercator
Horizontal Datum: GDA 1994
Grid: GDA 1994 MGA Zone 56

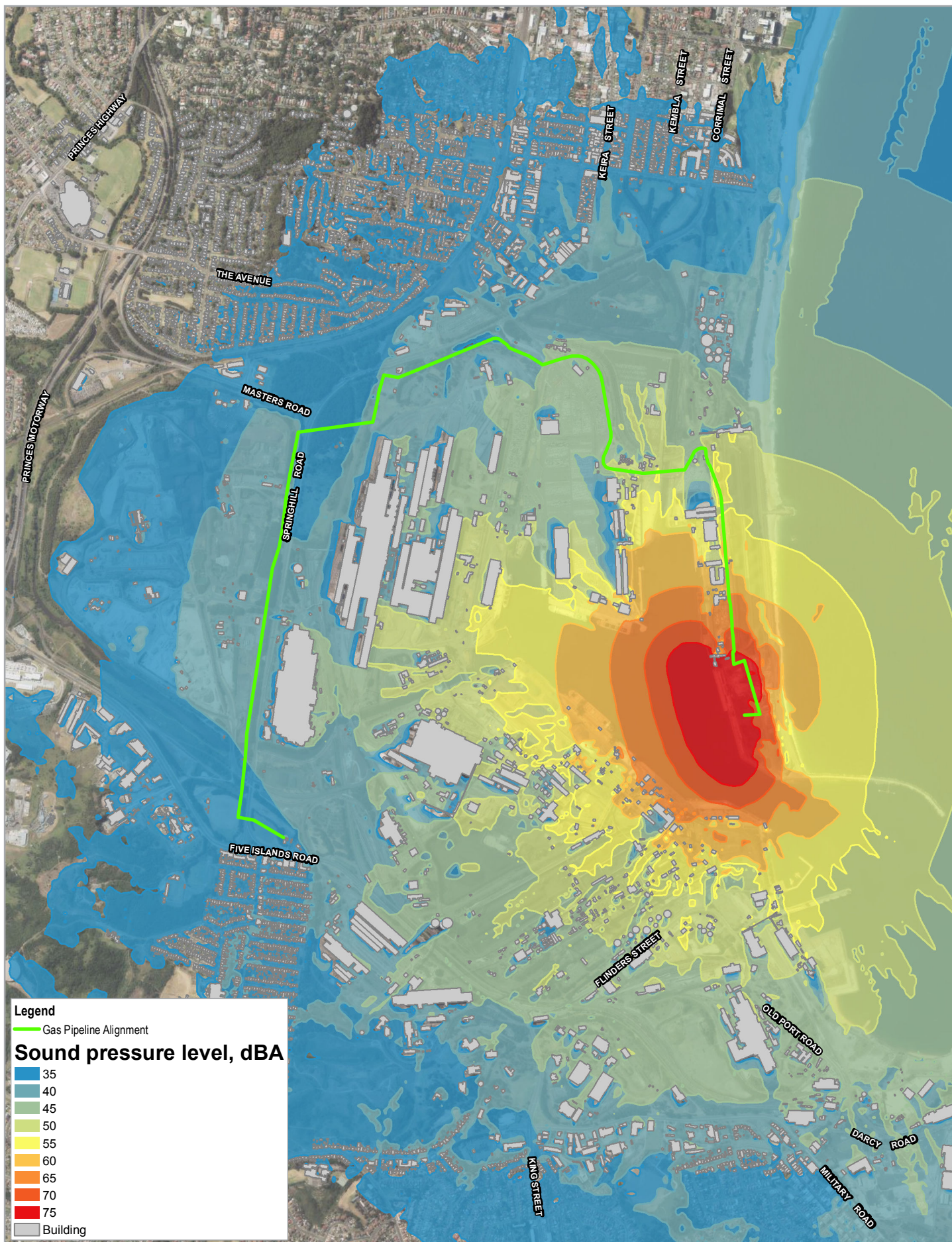


Australian Industrial Energy
Port Kembla Gas Terminal

Predicted construction noise levels,
dBA – CS2.6 (Material transport)

Project No. 21-27477
Revision No. A
Date 31 Oct 2018

Figure F12

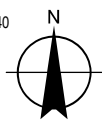


Paper Size ISO A4

0 260 520 780 1,040

Metres

Map Projection: Transverse Mercator
Horizontal Datum: GDA 1994
Grid: GDA 1994 MGA Zone 56

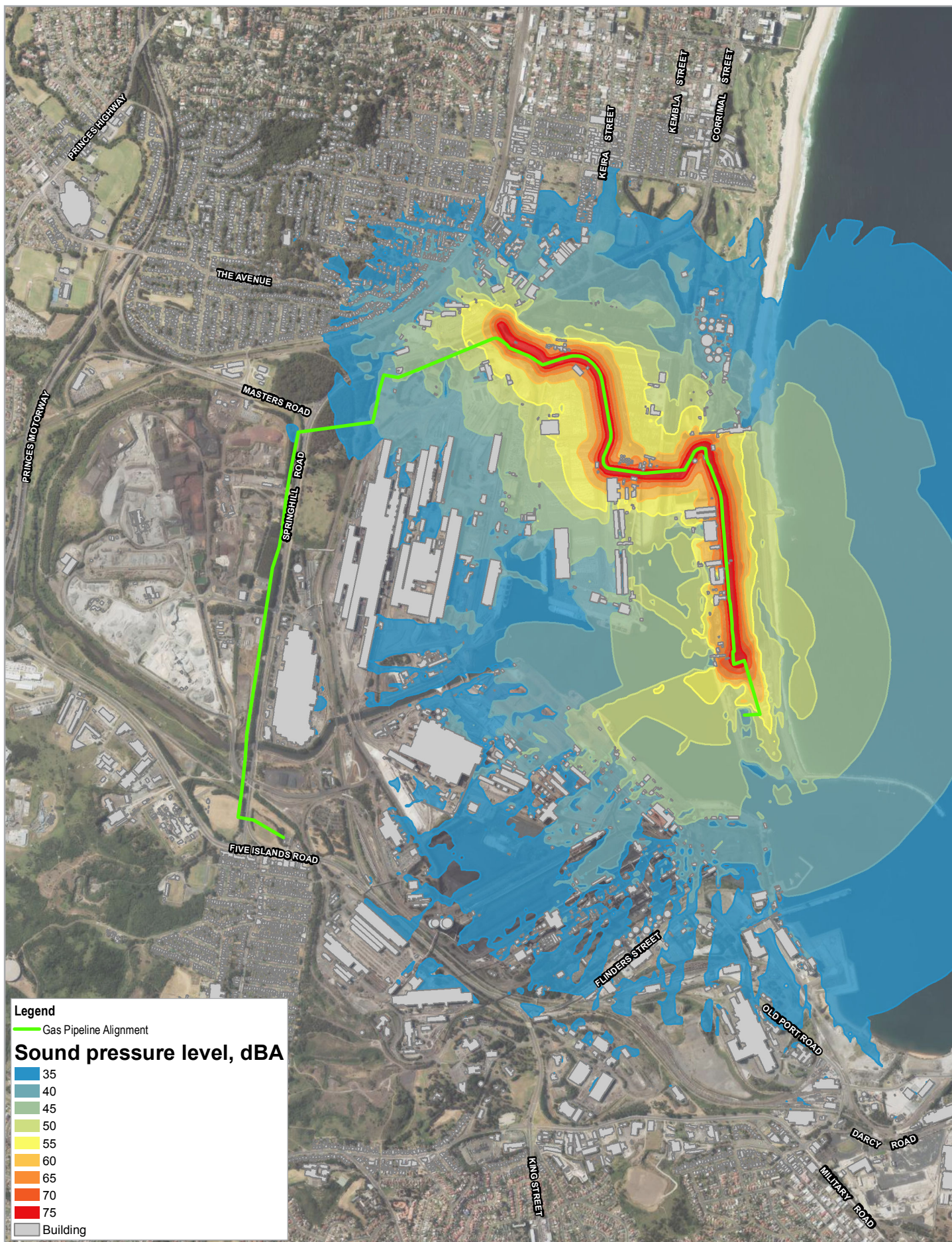


Australian Industrial Energy
Port Kembla Gas Terminal

Project No. 21-27477
Revision No. A
Date 31 Oct 2018

Predicted construction noise levels,
dBA – CS2.7 (Berth and mooring facilities)

Figure F13

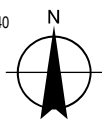


Paper Size ISO A4

0 260 520 780 1,040

Metres

Map Projection: Transverse Mercator
Horizontal Datum: GDA 1994
Grid: GDA 1994 MGA Zone 56



Australian Industrial Energy
Port Kembla Gas Terminal

Predicted construction noise levels,
dBA – CS2.8 (Material deliveries)

Project No. 21-27477
Revision No. A
Date 31 Oct 2018

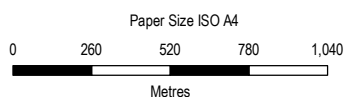
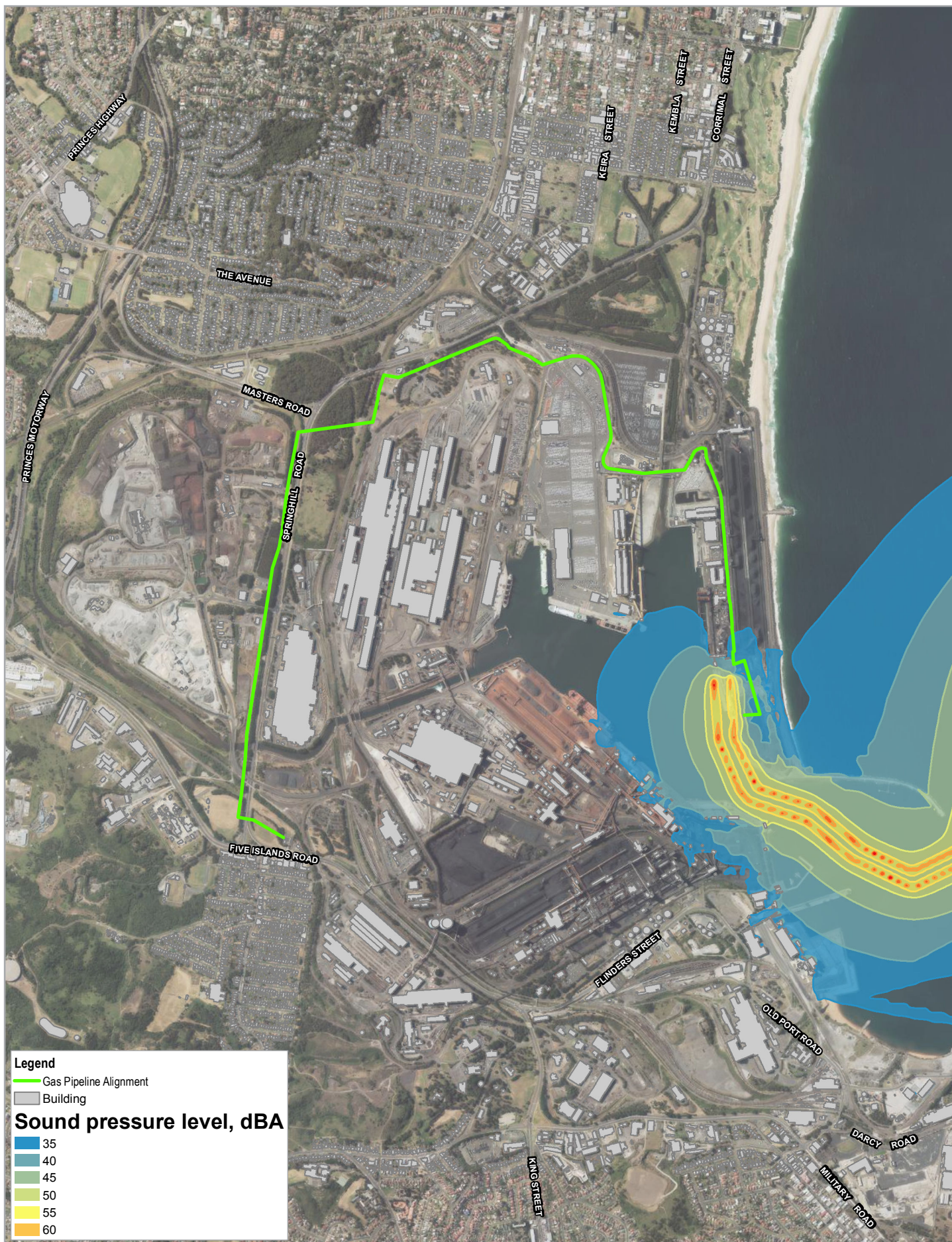
Figure F14

Appendix G – Predicted operational noise levels

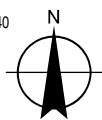
Receiver ID	Address	Receiver Type	NCA	OS1	OS2	OS1 and OS2
R001	330 Gladstone Avenue	Residential	NCA01	11	19	19
R002	136 Ocean Street	Residential	NCA01	11	18	19
R003	2 Mount Street	Residential	NCA01	11	19	19
R004	84 The Avenue	Residential	NCA01	10	18	18
R005	314 Gladstone Avenue	Residential	NCA01	11	19	19
R006	5 Hill Street	Residential	NCA01	12	20	20
R007	Drummond Street	Active recreation	NCA01	12	19	20
R008	Masters Road	Industrial	NCA01	15	22	23
R009	294-296 Gladstone Avenue	Residential	NCA01	12	19	20
R010	104 Ocean Street	Residential	NCA01	12	20	21
R011	8 Prospect Street	Residential	NCA01	14	20	21
R012	54 The Avenue	Residential	NCA01	12	19	20
R013	274 Gladstone Avenue	Residential	NCA01	12	19	20
R014	4 Grasmere Street	Residential	NCA01	13	22	22
R015	76 Ocean Street	Residential	NCA01	12	20	21
R016	262 Gladstone Avenue	Residential	NCA01	12	20	20
R017	3 Vale Street	Residential	NCA01	12	21	21
R018	23 The Avenue	Residential	NCA01	13	19	20
R019	250 Gladstone Avenue	Residential	NCA01	13	20	20
R020	4 John Street	Residential	NCA01	13	19	20
R021	46 Ocean Street	Residential	NCA01	13	21	22
R022	63 Robertson Street	Residential	NCA01	12	19	20
R023	12 The Avenue	Residential	NCA01	13	21	22
R024	230 Gladstone Avenue	Residential	NCA01	14	23	23
R025	47 Robertson Street	Residential	NCA01	12	19	20
R026	26 Ocean Street	Residential	NCA01	16	20	22
R027	85 Bridge Street	Residential	NCA01	13	19	20
R028	210 Gladstone Avenue	Residential	NCA01	14	21	22
R029	12 Ocean Street	Residential	NCA01	14	21	21
R030	192 Gladstone Avenue	Residential	NCA01	13	21	21
R031	21 Robertson Street	Residential	NCA01	13	20	21
R032	57 Bridge Street	Residential	NCA01	15	22	22
R033	Springhill Road	Industrial	NCA01	18	23	24
R034	117 Gladstone Avenue	Residential	NCA01	15	21	22
R036	20 Robertson Street	Residential	NCA01	14	20	21
R037	160 Gladstone Avenue	Residential	NCA01	14	19	20
R038	46 Bridge Street	Residential	NCA01	14	21	22
R039	146A Gladstone Avenue	Residential	NCA01	14	20	21
R040	15 Bridge Street	Residential	NCA01	15	21	22
R041	5 Old Springhill Road	Commercial	NCA01	18	24	25
R042	Tate Street	Residential	NCA01	16	25	26
R043	392 Keira Street	Residential	NCA01	16	24	25

Receiver ID	Address	Receiver Type	NCA	OS1	OS2	OS1 and OS2
R044	175 Five Islands Road	Industrial	NCA02	13	21	21
R045	159-163 Five Islands Road	Industrial	NCA02	14	20	21
R046	33 Dorman Street	Residential	NCA02	12	20	20
R047	147 Five Islands Road	Industrial	NCA02	13	20	21
R048	20 Lackawanna Street	Residential	NCA02	-	15	15
R049	25 Jarvie Road	Residential	NCA02	15	21	22
R050	1 Lackawanna Street	Residential	NCA02	12	19	20
R051	1 Dorman Street	Residential	NCA02	13	19	20
R052	17 Sheffield Street	Residential	NCA02	12	21	21
R053	4 Barry Street	Residential	NCA02	14	20	21
R054	19 Barry Street	Residential	NCA02	14	24	24
R055	14 Jarvie Road	Residential	NCA02	14	22	23
R056	52 Merrett Avenue	Residential	NCA02	13	20	21
R057	7 Barry Street	Residential	NCA02	14	23	23
R058	50 Lake Avenue	Residential	NCA02	16	21	22
R059	43 Cringila Street	Residential	NCA02	15	20	21
R060	43 Steel Street	Residential	NCA02	15	20	21
R061	1 Jarvie Road	Residential	NCA02	15	21	22
R062	41 Newcastle Street	Residential	NCA02	15	23	24
R063	22 Lake Avenue	Residential	NCA02	14	21	22
R064	6 Lake Avenue	Residential	NCA02	16	21	22
R065	87-93 Five Islands Road	Residential	NCA02	17	21	23
R066	25 Bethlehem Street	Residential	NCA02	16	24	24
R067	27 Merrett Avenue	Residential	NCA02	16	21	22
R068	59 Five Islands Road	Industrial	NCA02	17	22	23
R069	13 Newcastle Street	Residential	NCA02	15	21	22
R070	15 Birmingham Avenue	Residential	NCA02	15	24	24
R071	9 Steel Street	Residential	NCA02	16	21	22
R072	16 Merrett Avenue	Residential	NCA02	13	20	21
R073	1 Cringila Street	Residential	NCA02	15	20	21
R074	1-3 Bethlehem Street	Place of worship	NCA02	16	21	22
R075	4 Birmingham Street	Residential	NCA02	13	23	24
R076	Port Kembla Steelworks	Residential	NCA02	25	32	33
R077	1 Flinder Street	Industrial	NCA02	26	23	28
R078	16 Flinders Street	Industrial	NCA02	29	29	32
R079	7 Wentworth Street	Residential	NCA02	26	24	28
R080	91 Five Islands Road	Residential	NCA02	26	22	27
R081	Wentworth Street	Commercial	NCA02	24	22	26

Appendix H – Operational noise contours



Map Projection: Transverse Mercator
Horizontal Datum: GDA 1994
Grid: GDA 1994 MGA Zone 56



Australian Industrial Energy
Port Kembla Gas Terminal

Predicted operational noise levels,
dBA – OS1 (LNG carrier berthing)

Project No. 21-27477
Revision No. A
Date 31 Oct 2018

Figure H1