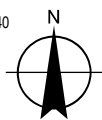


Map Projection: Transverse Mercator
Horizontal Datum: GDA 1994
Grid: GDA 1994 MGA Zone 56

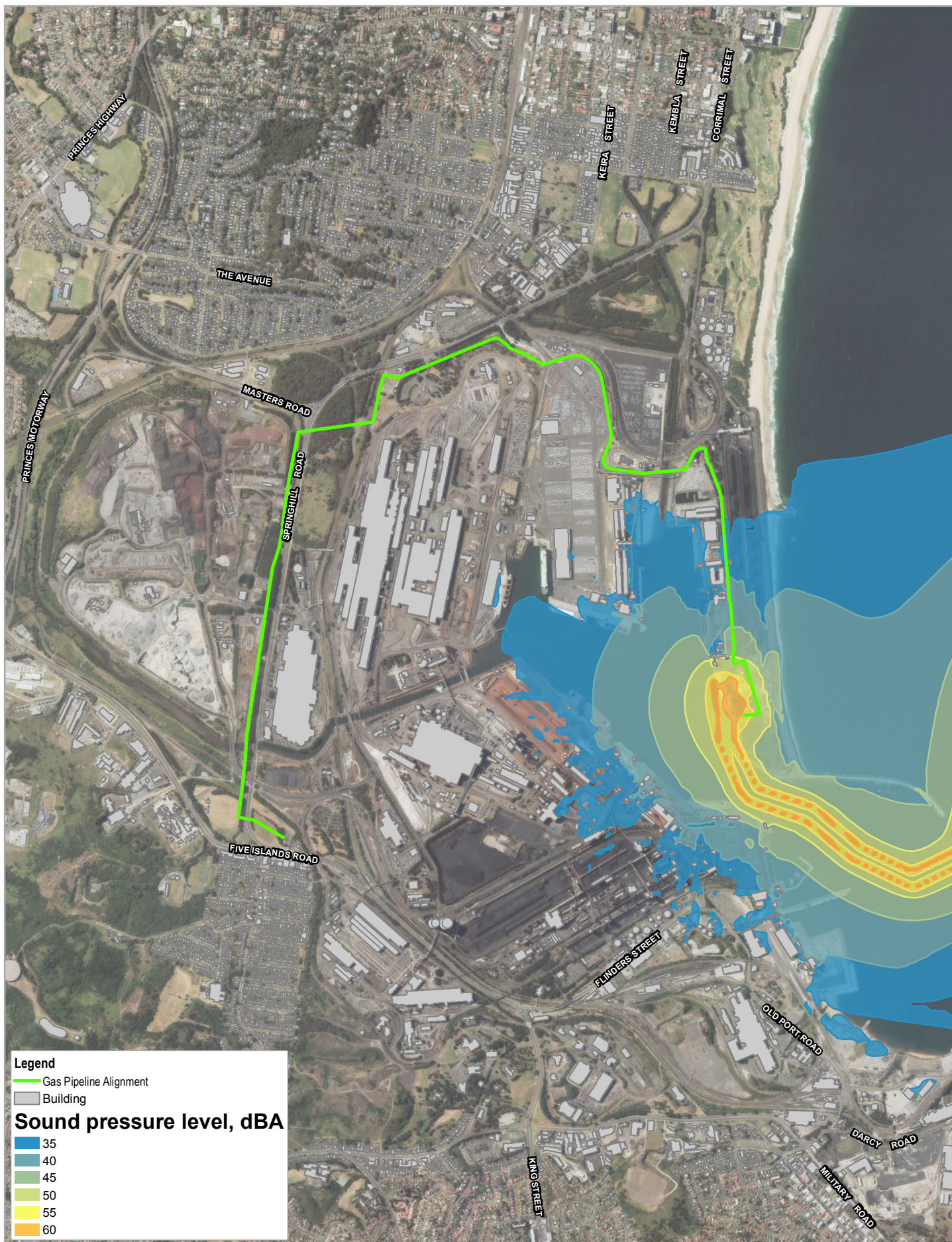


Australian Industrial Energy
Port Kembla Gas Terminal

Predicted operational noise levels,
dBA – OS2 (FSRU operation)

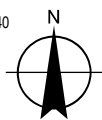
Project No. 21-27477
Revision No. A
Date 31 Oct 2018

Figure H2



Paper Size ISO A4
0 260 520 780 1,040
Metres

Map Projection: Transverse Mercator
Horizontal Datum: GDA 1994
Grid: GDA 1994 MGA Zone 56



Australian Industrial Energy
Port Kembla Gas Terminal

Predicted operational noise levels,
dBA – OS1 and OS2

Project No. 21-27477
Revision No. A
Date 31 Oct 2018

Figure H3

GHD

Level 15

133 Castlereagh Street

T: 61 2 9239 7100 F: 61 2 9239 7199 E: sydmall@ghd.com

© GHD 2018

This document is and shall remain the property of GHD. The document may only be used for the purpose for which it was commissioned and in accordance with the Terms of Engagement for the commission. Unauthorised use of this document in any form whatsoever is prohibited.

2127477-

81651/[https://projects.ghd.com/oc/Sydney1/eastcoastlngterminal/Delivery/Documents/2127477_REP_Noise and Vibration Impact Assessment.docx](https://projects.ghd.com/oc/Sydney1/eastcoastlngterminal/Delivery/Documents/2127477_REP_Noise%20and%20Vibration%20Impact%20Assessment.docx)

www.ghd.com

