



Environmental Monitoring Summary Report

Port Kembla Gas Terminal

Infrastructure Approval **SSI-9471**
EPL Licence Number: **21529**

Reporting period: **1 August 2021 – 31 August 2021**

Date published: **24 September 2021**



1 Project background

AIE is developing a Liquefied Natural Gas (LNG) import terminal at Port Kembla, south of Wollongong, NSW (the Project). The Project will be the first of its kind in NSW and will provide a simple and flexible solution to the state's gas supply challenges.

The Project has been declared Critical State Significant Infrastructure (CSSI) in accordance with Section 5.13 of the *Environmental Planning and Assessment Act 1979* (EP&A Act) (NSW) and Schedule 5 of the *State Environmental Planning Policy State and Regional Development* (SRD SEPP). The Project received Infrastructure Approval (the Approval) from the Minister for Planning and Public Spaces on 29 of April 2019, approval SSI-9471.

The construction of the Project is primarily associated with the establishment of a new berth facility at Port Kembla to enable an LNG Carrier to berth alongside the Floating Storage and Re-gasification Unit (FSRU) and new infrastructure to connect the terminal to the existing gas network. The location of the Project is shown on the Environmental Monitoring Location Plan provided as Appendix A.

An Environment Protection Licence (EPL No. 21529) was issued for the Project by the NSW Environment Protection Authority (EPA) on 2 June 2021. The details of the EPL are provided below in Table 1-1.

Table 1-1 EPL Details

EPL No.	21529
Anniversary Date:	2 June
Licensee:	Australian Industrial Energy Pty Ltd
	PO Box 3155 Broadway
	Nedlands WA 6009
Premises:	Port Kembla Gas Terminal, Port Kembla NSW 2505
Scheduled Activity	Chemical storage
	Contaminated soil treatment
	Crushing, grinding or separating

2 Report purpose

This Monthly Environmental Monitoring Report has been prepared to satisfy the monitoring data reporting requirements of the approval and environmental management plans as detailed further below in Table 2-1 for the reporting month of August 2021 (the reporting month).

Table 2-1 Environmental monitoring reporting requirements

Document	Clause or section	Requirement	Addressed:
DPIE SSI-9471	Sch. 4 Cond. 8	Regular Reporting – The Proponent must provide regular reporting on the environmental performance of the development on its website in accordance with the reporting requirements in any strategies, plans or programs approved under the conditions of this approval.	This report to be made available on the Project Website.
	Sch. 4 Cond. 12	Access to information – From the commencement of development under this approval, the Proponent shall: (a) Make copies of the following information publicly available on its website: - a comprehensive summary of the monitoring results of the development, reported in accordance with the specifications in any conditions of this approval, or any approved plans and programs	
AIE Air Quality Management Plan	Section 8.3	A summary of monthly data will be published on the Project's webpage, noting any exceedance of EPL trigger value, investigation, and response.	This report
AIE Water Quality Management Plan	Section 8.5	Regular reporting A summary of monthly data will be published on the PKGT AIE website in the form of a report. The report will note details for:	This report which will be made available on the Project Website.
		- Any exceedance of COC trigger values, the subsequent investigation and response/resolution	Section 4 and Appendix B
		- Complaint summary (if applicable)	Section 4.4
		- Statistics related to productivity of work (actual workflow vs planned) including details on any delays encountered	Section 3.1
		- Forecasting for future works	Section 3.3
		- Activities completed for the month	Section 3.2
		- Activities planner for the next month	Section 3.3
		- Current risks and issues, including impact level and mitigation measures.	Section 0

3 Project activities

3.1 Project status

Early Enabling works are scheduled for approximately 6 months and include:

- Excavation to allow removal of existing structures and services and facilitate construction of the quay wall
- Demolition/removal of Berth 101 and aboveground structures
- Demolition/removal of aboveground and underground services
- Relocation of existing stockpiles onsite
- Transport of spoil via road from the Marine Berth and Dredging Site Compound to the Emplacement Cell Construction Site in the Outer Harbour
- Platform excavation and stockpiling
- Processing demolished materials (for re-use or recycling) by others.
- Cone Penetration Testing in the Outer Harbour

3.2 Project activities for the reporting month

- Removal of above ground structures
- Concrete processing
- Operation of the site water treatment plant (WTP) where required
- Berth 101 deck removal
- Bulk excavation of fill layer and stockpiling

3.3 Project activities for the upcoming month

- Continued removal of remaining above ground structures
- Continued bulk excavation
- Continued concrete processing
- Outer Harbour laydown area works mobilisation
- Continued Berth 101 deck removal
- Removal of Berth 101 piles

3.4 Current project environmental risks and controls

The identified environmental risk and proposed mitigation measures and controls for the current and foreseeable construction activities are presented in Table 3-1.

Table 3-1 Project environmental risks

Ref.	Environmental risk		Associated activity	Mitigation measure
	Aspect	Impact		
2106_01	Water quality	Water pollution	Construction works adjacent to the Port Kembla Harbour	Implementation of the Construction Water Quality Monitoring Plan (CWQMP)
				Water quality monitoring and reporting
				Implementation of water discharge permit procedure for sediment basin discharge.
2106_02	Air quality	Generation of nuisance dust levels	Demolition works	Implementation of the Air Quality Management Plan
				Continuous air quality monitoring
2106_03	Environmental compliance	Breach of legislation and or Management Plan requirements	Commencement of and ongoing works	Establishment and implementation of environmental procedures and processes
				Liaisons with regulatory authorities and seek clarification where required
				Regular site inspections and coordination meetings with contractor

4 Environmental monitoring data

The following sections present a summary of the air quality, water quality and weather monitoring data.

A copy of this report will be made available on the Project website at the following web-address:

<https://ausindenergy.com/environmental-information/>

4.1 Air quality

4.1.1 Air quality monitoring locations and frequency

Air quality monitoring equipment is installed to the north and south of the demolition area (Berth 101), and to the east, west and central portion of the Outer Harbour stockpile area.

A summary of the air quality monitoring locations are provided below in Table 4-1 and a monitoring location plan is provided in Appendix A.

Table 4-1 Air quality monitoring locations

EPL Ref.	Monitoring location	Monitoring type	Monitoring parameter	Monitoring frequency
8	Northern boundary of the premises, adjacent the southern boundary of Port Kembla Coal Terminal	Dust Deposition Gauge	Particulates - Deposited Matter (gm/m ² /month)	Monthly
10	Southern boundary of Berth 101			
12	Southern side of emplacement area, Outer Harbour			
14	Eastern side of emplacement area, Outer Harbour	Ambient Air Monitoring - High Volume Air Sampler	Total Suspended Particles (TSP)	Special Frequency 1 (24-hour period every 6 days)
22	Northern side of emplacement area, Outer Harbour			
9	Northern boundary of the premises, adjacent the southern boundary of Port Kembla Coal Terminal	Real time dust monitoring	PM ₁₀ (ug/m ³)	Continuous
11	Southern boundary of Berth 101			
13	Southern side of emplacement area, Outer Harbour			
15	Eastern side of emplacement area, Outer Harbour			
23	Northern side of emplacement area, Outer Harbour			

4.1.2 Air Quality Monitoring Results

The air quality monitoring results for the reporting month are presented below in **Error! Reference source not found..**

Table 4-2 Air quality monitoring results

Monitoring Location (EPL Reference)		Monitoring parameter							
		Particulates Deposited Matter (Depositional dust gauge) ²	Total Suspended Particles (High Volume Air Sampler)			PM10 (Real-time tracker)			Events above criteria ¹
			Average	Minimum	Maximum	Average	Minimum	Maximum	
Unit	gm/m ² /month	ug/m ³	ug/m ³	ug/m ³	ug/m ³ /24 hours	ug/m ³ /24 hours	ug/m ³ /24 hours	No.	
Criteria	NA	NA	NA	NA	NA	NA	50	NA	
Berth 101 North	EPL 8	9.10	0.13	0.09	0.20	No PM10 monitoring required at this EPL Point			NA
	EPL 9	No Dust Deposition Gauge or HiVol required at this EPL Point				51.18	29.04	126.54	14
Berth 101 South	EPL 10	9.10	0.13	0.10	0.20	No PM10 monitoring required at this EPL Point			NA
	EPL 11	No dust gauge or HiVol required at this EPL Point				56.14	25.08	167.50	13
Outer Harbour South	EPL 12	1.50	0.05	0.02	0.07	No PM10 monitoring required at this EPL Point			NA
	EPL 13	No dust gauge or HiVol required at this EPL Point				13.20	2.61	28.36	Background ³
Outer Harbour East	EPL 14	1.10	0.04	0.01	0.06	No PM10 monitoring required at this EPL Point			NA
	EPL 15	No dust gauge or HiVol required at this EPL Point				18.03	6.61	35.77	Background ³
Outer Harbour North	EPL 22	1.20	0.04	0.01	0.12	No PM10 monitoring required at this EPL Point			NA
	EPL 23	No dust gauge or HiVol required at this EPL Point				17.09	2.88	41.52	Background ³

¹Includes individual number of times results recorded above criteria. Refer to Appendix B for event above criteria reports.

²Assessed as Total Insoluble

³All readings were of background levels during this period as no activities were occurring at the Outer Harbour.

4.2 Water quality

4.2.1 Water quality monitoring locations and frequency

Water quality monitoring is undertaken at five (5) locations within the Port Kembla harbour. Each water quality monitoring location is securely anchored/moored in its location. Details of each of the water quality monitoring locations and corresponding EPL licence reference is provided below in Table 4-3.

Table 4-3 Harbour water quality monitoring locations

EPL Ref.	Monitoring location	Type of monitoring	Parameters	
			Continuous monitoring at 15 min intervals	Weekly grab sample
1	WQM1 - North of Berth 101	Primary- impact works area receiver		
16	WQM2 - North of the emplacement cell, Outer Harbour. No more than 20m from emplacement cell silt curtain	Primary- impact works area receiver	- Turbidity	- Aluminium - Arsenic - Cadmium - Chromium (total) - Cobalt - Copper
17	WQM3 - South West of Berth 101	Primary- impact works area receiver	- Temperature - pH	- Lead - Mercury - Nickel
18	WQM4 - Near the Pacific Ocean entrance to Outer Harbour	Background water quality	- Electrical Conductivity - Dissolved oxygen	- Tributyltin - TSS - Zinc - PAH
19	WQM5 - Near entrance to Allans Creek, near Bluescope Steel	Background water quality		

In addition to the monitoring requirements listed above for the harbour, monitoring is also required for any discharge event from the on-site sedimentation basin located at the southern end of Berth 101. Details of the monitoring requirements associated with the sediment basin discharge point are included below in Table 4-4.

Table 4-4 Sediment basin discharge monitoring

EPL Ref.	Monitoring location	Type of monitoring	Parameters	
			Prior to discharge	Daily grab sample during discharge
20	Sediment basin discharge point at the southern end of Berth 101	Wet weather discharge quality	- Oil and grease (visual) - Total suspended solids (TSS)	- Aluminium - Arsenic - Cadmium - Chromium - Cobalt - Copper - Lead - Mercury - Nickel - Oil and grease (visual) - pH - PAHs - Tributyltin - TSS - Zinc

4.2.2 Continuous water quality monitoring results

A summary of the results for the continuous water quality monitoring in the harbour is presented below in Table 4-5. Further details for events above criteria as indicated below are provided in Appendix B.

Table 4-5 Harbour water quality – Continuous monitoring results

Monitoring location	Statistic	Results - based on individual 15-minute median				
		Turbidity (NTU)	Temperature (Deg. C)	pH	Electrical conductivity (uS/cm)	Dissolved Oxygen (%sat)
Criteria		25 ¹	N/A	Background +/- 0.5 pH units	Background +/- 20% (+ baseline)	Background - 20% (+ baseline)
WQM1 / EPL 1	Average	1.7	16.7	8.2	53045.7	97.6
	Minimum	0.7	15.2	8.1	44895.1	86.7
	Maximum	7.6	19.4	8.3	53973.5	107.3
	No. Events above Criteria ²	0	-	0	0	0
WQM2 / EPL 16	Average	1.4	16.5	8.2	53666.4	101.7
	Minimum	0.5	15.1	8.1	52509.1	89.1
	Maximum	12.5	17.6	8.3	54098.5	116.4
	No. Events above Criteria ²	0	-	0	0	0
WQM3 / EPL 17	Average	1.3	16.8	8.2	53325.7	99.9
	Minimum	0.6	15.7	8.1	48118.0	90.6
	Maximum	4.6	19.5	8.3	54069.2	110.7
	No. Events above Criteria ²	0	-	0	0	0
WQM4 / EPL 18 (Background)	Average	1.1	16.5	8.3	53660.5	100.8
	Minimum	0.5	15.4	8.1	50877.3	90.9
	Maximum	3.3	17.9	8.3	54252.4	114.4
WQM5 / EPL 19 (Background)	Average	3.0	19.2	8.1	52476.4	100.9
	Minimum	0.7	16.0	8.0	43102.5	88.9
	Maximum	277.8	24.1	8.3	53979.3	113.7

¹Indicative value based on previous EPL's issued at Port Kembla indicate that 50 mg/l of suspended sediment is equal to 25 NTU (as per CWQMP). To be modified throughout the project to reflect actual TSS / NTU correlation data as it becomes available.

²Includes individual number of times results exceeded background. Refer to Appendix B for report on results above criteria.

4.2.3 Water Quality Monitoring Results – Port Kembla Harbour Grab Samples

A summary of the results for the Port Kembla Harbour weekly grab samples is presented below in Table 4-6.



Table 4-6 Harbour water quality – Weekly grab sample results summary

Monitoring Location	Statistic	Aluminium	Anthracene	Arsenic	Benzo(a)pyrene	Cadmium	Chromium (total)	Cobalt	Copper	Lead	Mercury	Naphthalene	Nickel	Total PAHs	Total Suspended Solids (TSS)	Tributyltin	Zinc
Unit		ug/L	ug/L	ug/L	ug/L	ug/L	ug/L	ug/L	ug/L	ug/L	Ug/L	ug/L	ug/L	ug/L	mg/L	ug/L	ug/L
Criteria ²		BL	0.10	BL	BL	5.50	4.40	1.00	1.3 + BL	4.4 + BL	0.40	70.00	70.00	NA	50 + BG	0.01	15 + BL
WQM1/ EPL 1	Average	32.50	<0.1	1.75	<0.1	<0.1	1.25	<1	1.00	1.00	<0.05	<0.2	1.00	<0.1	5.25	<0.002	5.50
	Minimum	10.00	<0.1	1.00	<0.1	<0.1	1.00	<1	1.00	1.00	<0.05	<0.2	1.00	<0.1	5.00	<0.002	5.00
	Maximum	100.00	<0.1	2.00	<0.1	<0.1	2.00	<1	1.00	1.00	<0.05	<0.2	1.00	<0.1	6.00	<0.002	7.00
	Events above criteria ¹	0	0	0	0	0	0	0	0	0	0	0	0	0	0	0	0
WQM2/ EPL16	Average	10.00	<0.1	1.75	<0.1	<0.1	1.50	<1	1.00	<1	<0.05	<0.2	2.00	<0.1	6.25	<0.002	2.00
	Minimum	10.00	<0.1	1.00	<0.1	<0.1	1.00	<1	1.00	<1	<0.05	<0.2	1.00	<0.1	5.00	<0.002	2.00
	Maximum	10.00	<0.1	2.00	<0.1	<0.1	2.00	<1	1.00	<1	<0.05	<0.2	5.00	<0.1	9.00	<0.002	2.00
	Events above criteria ¹	0	0	0	0	0	0	0	0	0	0	0	0	0	0	0	0
WQM3/ EPL17	Average	15.00	<0.1	1.75	<0.1	<0.1	1.25	<1	1.00	<1	<0.05	<0.2	1.00	<0.1	5.75	<0.002	4.50
	Minimum	10.00	<0.1	1.00	<0.1	<0.1	1.00	<1	1.00	<1	<0.05	<0.2	1.00	<0.1	5.00	<0.002	3.00
	Maximum	30.00	<0.1	2.00	<0.1	<0.1	2.00	<1	1.00	<1	<0.05	<0.2	1.00	<0.1	8.00	<0.002	5.00
	Events above criteria ¹	0	0	0	0	0	0	0	0	0	0	0	0	0	0	0	0
WQM4/ EPL18	Average	10.00	<0.1	1.75	<0.1	<0.1	1.25	<1	1.00	<1	<0.05	<0.2	1.00	<0.1	6.75	<0.002	3.00
	Minimum	10.00	<0.1	1.00	<0.1	<0.1	1.00	<1	1.00	<1	<0.05	<0.2	1.00	<0.1	5.00	<0.002	2.00
	Maximum	10.00	<0.1	2.00	<0.1	<0.1	2.00	<1	1.00	<1	<0.05	<0.2	1.00	<0.1	12.00	<0.002	4.00
WQM5/ EPL19	Average	12.50	<0.1	2.00	<0.1	<0.1	1.25	<1	1.00	<1	<0.05	<0.2	2.25	<0.1	6.50	<0.002	6.25
	Minimum	10.00	<0.1	1.00	<0.1	<0.1	1.00	<1	1.00	<1	<0.05	<0.2	1.00	<0.1	5.00	<0.002	3.00
	Maximum	20.00	<0.1	3.00	<0.1	<0.1	2.00	<1	1.00	<1	<0.05	<0.2	5.00	<0.1	8.00	<0.002	10.00

¹Includes individual number of times results reported above criteria. Refer to Appendix B for report on results on criteria.

²BL = Baseline BG = Background (WQM4 / WQM5)



4.2.4 Water quality monitoring results – sediment basin discharge

During the reporting month, there were two (2) authorised discharge events and zero (0) discharge events as a result of excessive rainfall (>43.5 mm in any 5-day period).

Refer to Section 4.3 for site weather monitoring details. The date of the discharge event is provided below in Table 4-7.

A summary of the water quality results for the authorised discharge event from the sediment basin is included below in Table 4-7.

Table 4-7 Sediment basin discharge water quality – Pre-discharge and daily grab sample results

Date of discharge/ sampling	Naphthalene	Acenaphthylene	Acenaphthene	Fluorene	Phenanthrene	Anthracene	Fluoranthene	Pyrene	Benzo(a) anthracene	Chrysene	Benzo(b,j,k) fluoranthene	Benzo(a)pyrene	Indeno(1,2,3-c,d) pyrene	Dibenzo(a,h) anthracene	Benzo(g,h,i) perylene	Benzo(a) pyrene TEQ	Total PAH
	µg/L	µg/L	µg/L	µg/L	µg/L	µg/L	µg/L	µg/L	µg/L	µg/L	µg/L	µg/L	µg/L	µg/L	µg/L	µg/L	µg/L
Criteria	NA ¹	NA	NA	NA	NA	NA	NA	NA	NA	NA	NA	NA	NA	NA	NA	NA	NA
24/08/2021	<1	<0.1	<0.1	<0.1	<0.1	<0.1	<0.1	<0.1	<0.1	<0.1	<0.2	<0.1	<0.1	<0.1	<0.1	<0.5	<0.1
25/08/2021	<1	<0.1	<0.1	<0.1	<0.1	<0.1	<0.1	<0.1	<0.1	<0.1	<0.2	<0.1	<0.1	<0.1	<0.1	<0.5	<0.1

Date of discharge/ sampling	Aluminium	Arsenic	Cadmium	Chromium	Cobalt	Copper	Lead	Mercury	Nickel	Zinc	Tributyltin	TSS	pH	Oil & Grease
	µg/L	µg/L	µg/L	µg/L	µg/L	µg/L	µg/L	µg/L	µg/L	µg/L	µg/L	mg/L	-	-
Criteria	NA	NA	NA	NA	NA	NA	NA	NA	NA	NA	NA	50	NA	Visible
24/08/2021	210.00	<1	<0.1	4.00	<1	2.00	<1	<0.05	<1	4.00	<0.002	<5	8.20	Not Visible
25/08/2021	230.00	1.00	<0.1	6.00	<1	2.00	<1	<0.05	<1	2.00	<0.002	<1	8.00	Not Visible

¹NA = No licence limit, monitoring requirement only

4.3 Weather station results

Under the EPL (Condition M5), AIE is required to monitor and record temperature, humidity, wind direction, wind velocity and rainfall at either a project weather station, or through analysis of equivalent weather information obtained from the Australian Bureau of Meteorology.

AIE established and maintains a weather station for the project site located at the southern point of Berth 101 (EPL monitoring point 21) as shown in the Monitoring Location Plan in Appendix A. The monthly data obtained from the onsite weather station is provided below in Table 4-8.

Table 4-8 Site weather station monitoring results summary

Parameter	Unit of measure	Monthly statistic	Result EPL Point 21
Wind velocity	m/s (15min average)	Average	4.22
		Minimum	0.37
		Maximum	14.27
Wind direction at 10m	Degrees (1hr average)	Average	221.87
Rainfall rate	mm/hr (1hr average)	Average	0.40
		Minimum	0.00
		Maximum	21.80
Rainfall (Total)	mm	Monthly total	296.17
Temperature	Degrees Celsius	Average	15.33
		Maximum	9.40
		Minimum	24.90
Humidity	%	Average	59.08
		Minimum	23.40
		Maximum	92.50



4.4 Drone Survey

A monthly drone flyover is being undertaken to obtain visual photographs of the Early Enabling Works footprint and wider harbour area. The survey of the MBD Site Compound and Emplacement Cell Construction Site produces high-resolution image and allows for a qualitative assessment of visible impacts of sediment plumes (if any) and silt curtain condition and position amongst other markers.

The drone footage provides a visual representation of the ecological health of Port Kembla and will indicate if there are any visual issues requiring investigation, such as sediment plumes, etc. No issues were noted in this month's survey. Select photos are provided in Appendix C from the August 2021 survey.



5 Environmental complaints

A summary of environmental complaints received during the reporting month and follow-up close-out and or corrective actions are presented below in Table 5-1.

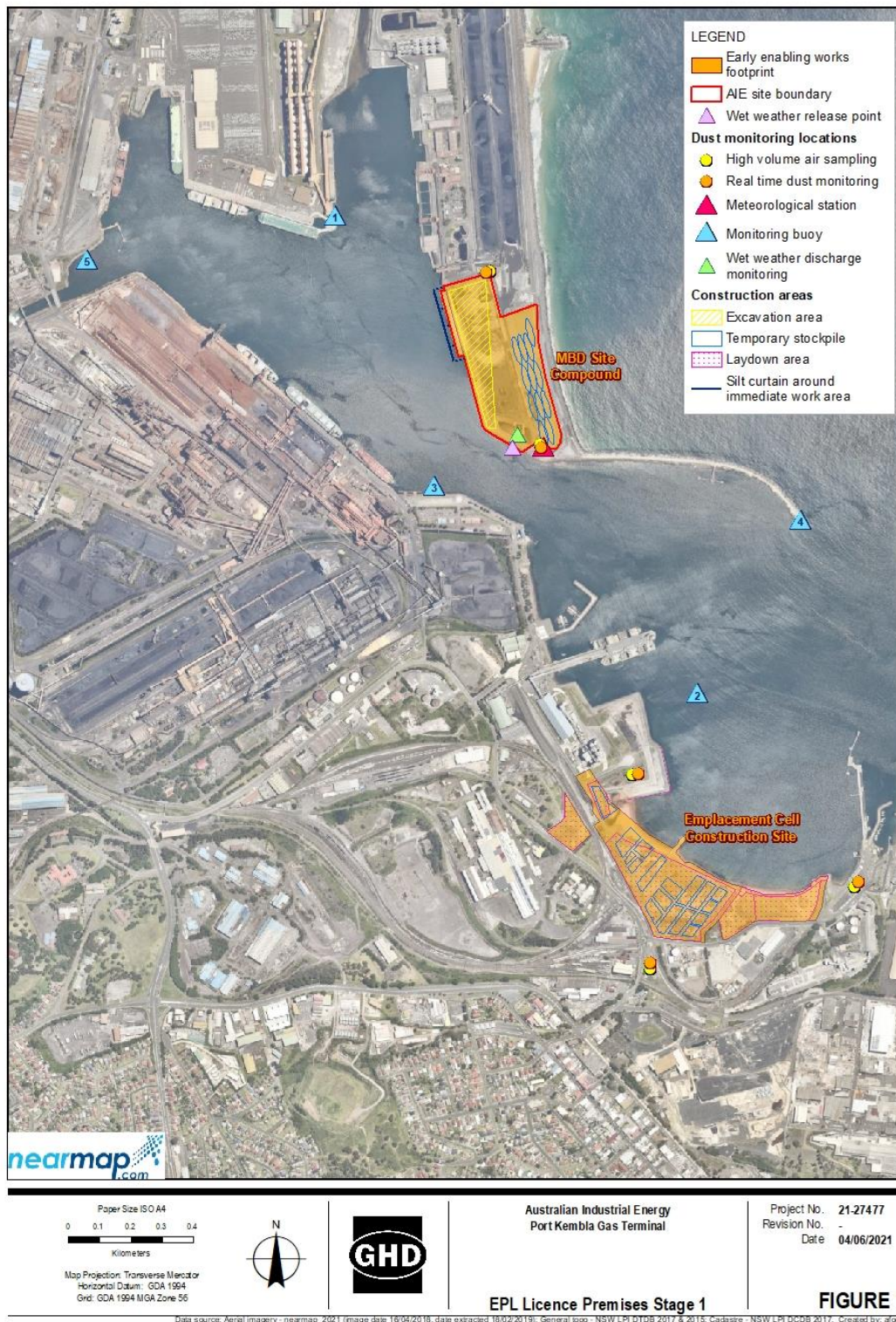
Table 5-1 Environmental complaints summary

Date	Complaint No.	Nature of the complaint	Follow-up close-out and or corrective action
NA	NA	No environmental complaints received for the reporting month	NA



Appendices

Appendix A – Monitoring Location Plan



Appendix B – Summary of Events Above Criteria

Each exceedance triggers an investigation including the evaluation of wind direction, comparison of upwind and downwind monitors at the time of the event. Dust prevention controls are continually being assessed to ensure their adequacy.

Air Monitoring Events Above Criteria

Date	Location	Exceedance value (ug/m ³)	Investigation & Actions
1/08/2021	EPL 11	64.67	W to WSW wind direction during elevated levels around 9m/s. Consistent with background readings. Elevated levels also recorded at publicly available monitors to the NW and SW of site. Levels controlled onsite.
2/08/2021	EPL 9	56.77	W to WSW wind direction during elevated levels, reducing as wind turned Northerly. Consistent with background readings. Elevated levels also recorded at publicly available monitors to the NW and SW of site. Exceedances recorded early morning prior to work commencing. Levels controlled onsite.
	EPL 11	61.91	
4/08/2021	EPL 9	85.17	SW wind direction during elevated levels, with wind speed from 8 – 13m/s. Consistent with background readings. Elevated levels also recorded at publicly available monitors to the NW and SW of site. Continued water cart operation for dust suppression was undertaken.
	EPL 11	108.00	
5/08/2021	EPL 9	51.25	W to SW wind direction during elevated levels with wind speeds up to 8m/s. Consistent with background readings. Elevated levels also recorded at publicly available monitors to the NW of site. Exceedances recorded early morning prior to work commencing, levels controlled by the afternoon.
12/08/2021	EPL 9	53.96	SW wind direction at ~8m/s during elevated levels around 2-4am and 8am. Consistent with background readings. Elevated levels also recorded at publicly available monitors to the SW of site. Continued water cart operation for dust suppression was undertaken.
	EPL 11	62.13	
14/08/2021	EPL 9	53.00	WSW wind direction at ~1-3m/s during elevated levels around 2-10am, reducing as wind turns ENE. Consistent with background readings. Elevated levels also recorded at publicly available monitors to the NW of site. Levels controlled onsite.
	EPL 11	82.04	
16/08/2021	EPL 9	126.54	Highly elevated levels between 1-3am and 4-8pm, with elevated levels throughout day as wind speeds reach 8-11m/s from the W / SW. Consistent with background readings. Elevated levels also recorded at publicly available monitors to the NW and SW of site. Many of the exceedances occurred outside the hours of operation.
	EPL 11	167.50	
19/08/2021	EPL 9	67.92	



Date	Location	Exceedance value (ug/m3)	Investigation & Actions
	EPL 11	56.67	Elevated levels present throughout day as wind generally tracked from a northerly aspect, reaching speeds of 6m/s. Consistent with background readings. Elevated levels also recorded at publicly available monitors to the NW and SW of site. Levels controlled onsite.
20/08/2021	EPL 9	58.33	Elevated levels occurring overnight and continuing until the middle of the day as wind shifts from SW/W to N. Consistent with background readings. Elevated levels also recorded at publicly available monitors to the NW of site.
	EPL 11	107.04	
21/08/2021	EPL 9	56.92	Levels fluctuation throughout day with inconsistent wind direction. Consistent with background readings. Elevated levels also recorded at publicly available monitors to the NW of site. Levels controlled onsite with water cannon and water carts.
	EPL 11	65.08	
23/08/2021	EPL 11	61.25	Elevated levels throughout day, peaking at 3pm as wind turns Northerly and windspeed increases to 9m/s. Consistent with background readings. Continued water cart operation for dust suppression was undertaken.
25/08/2021	EPL 9	67.67	Elevated levels throughout day as S/SWS wind speed remains high. Consistent with background readings. Elevated levels also recorded at publicly available monitors to the NW of site. Continued water cart operation for dust suppression was undertaken.
	EPL 11	52.42	
27/08/2021	EPL 9	61.13	Elevated levels as wind tracks from S, easing as wind turns Easterly, and rising again as wind swings back S and increases in speed to 6m/s. Consistent with background readings. Elevated levels also recorded at publicly available monitors to the NW of site.
28/08/2021	EPL 9	60.13	Elevated levels as wind tracks from the SW, easing as wind turns Easterly, and rising again as wind swings back S. Continued water cart operation for dust suppression was undertaken. Wind speed elevated throughout day. Consistent with background readings. Elevated levels also recorded at publicly available monitors to the NW and SW of site.
29/08/2021	EPL 9	50.83	Elevated levels throughout early morning with a peak in the evening as wind comes from the SW to W. Consistent with background readings. Elevated levels also recorded at publicly available monitors to the NW of site. Levels controlled onsite with water cannon and water carts.
	EPL 11	65.54	
31/08/2021	EPL 9	68.71	Elevated levels throughout day as wind comes from the from the West and North. Consistent with background readings. Elevated levels also recorded at publicly available monitors to the NW and SW of site. Levels controlled onsite with water cannon and water carts.
	EPL 11	77.17	

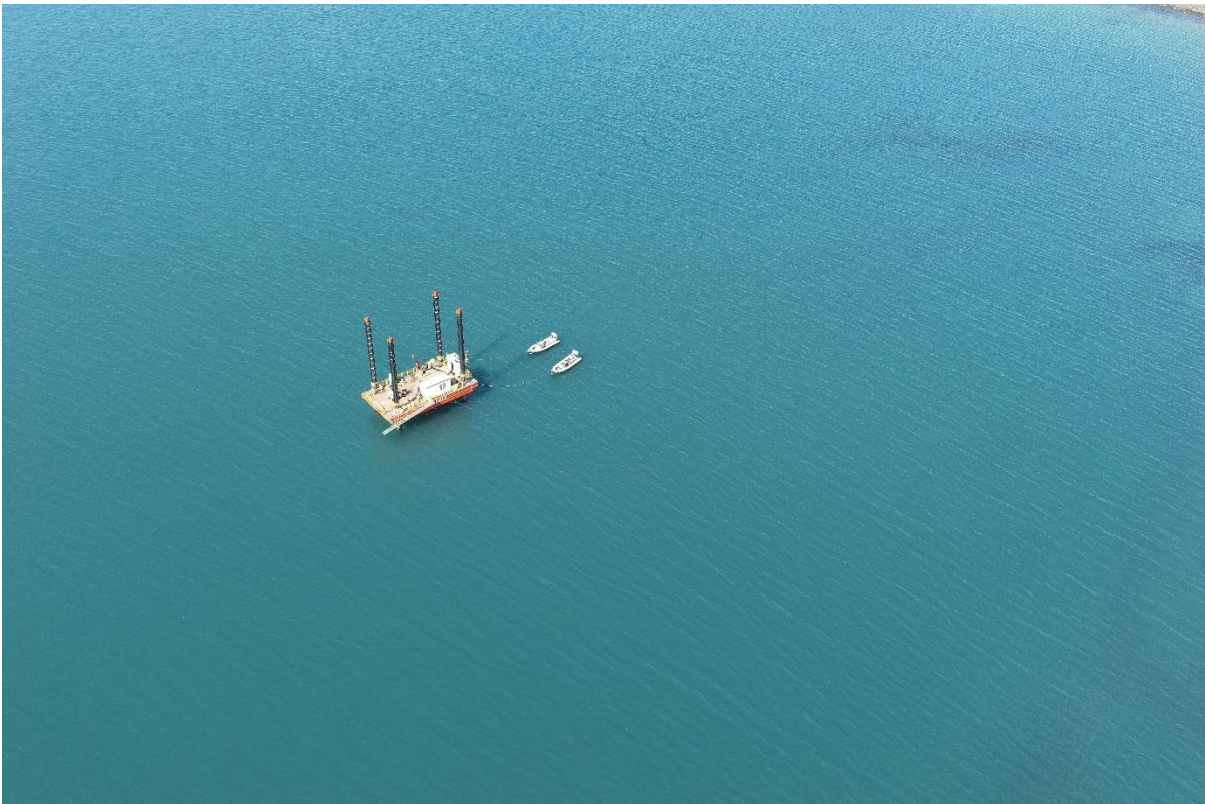
Water Monitoring Events Above Criteria

Date	Location	Recorded Value	Action Taken	Investigation Outcomes
No events above criteria in reporting period				

Appendix C – Drone Survey Images



Photograph 1. View of MBD Site, showing berth 101 demolition in progress and silt curtain, facing west. Captured 31/08/2021.



Photograph 2. View of barge and geotechnical investigation rig in the Outer Harbour, facing west. Captured 31/08/2021.



Photograph 3. View of outer harbour area prior to site setup. Captured 31/08/2021.