



PORT KEMBLA ENERGY TERMINAL

POLLUTION INCIDENT RESPONSE MANAGEMENT PLAN (PIRMP)

Version 6 (Redacted)
22/08/2024

PKGT-AIE-PRO-007 – Pollution Incident Response Management Plan



**POLLUTION INCIDENT RESPONSE MANAGEMENT PLAN
LICENCE NUMBER: 21529**

Approved by: Alexandra Lovell

Position/Title: Project Manager
(Delivery)

Date: 22 August 2024

INTRODUCTION:

Australian Industrial Energy (AIE) holds an Environment Protection Licence (EPL No. 21529) with the NSW Environment Protection Authority (EPA) for the Port Kembla Energy Terminal. As per the *Protection of the Environment Operations Act 1997* (the POEO Act), AIE must prepare, keep, test and implement a Pollution Incident Response Management Plan (PIRMP) that complies with Part 5.7A of the POEO Act in relation to the activity to which the licence relates.

If a pollution incident occurs in the course of an activity so that material harm to the environment (within the meaning of section 147 of the POEO Act) is caused or threatened, the person carrying out the activity must **immediately** implement this plan in relation to the activity required by Part 5.7A of the POEO Act. A copy of this plan must be kept at the licensed premises and be made available on request by an authorised EPA officer and to any person who is responsible for implementing this plan.

This redacted version of the Plan has made available to the public on the Squadron Energy website - <https://www.squadronenergy.com/>, with any content with potential security or commercial sensitivity removed.

NOTE: This plan has been developed in accordance with the *Protection of the Environment Operations Act 1997* and the Protection of the Environment Operations (General) Regulation 2009.



Environment Protection Licence (EPL) Details	
Name of licensee: (including ABN)	Australian Industrial Energy (AIE) ABN 20 624 375 417
EPL number:	21529
Premises name and address:	Port Kembla Energy Terminal Port Kembla Road Inner Harbour, WOLLONGONG NSW 2500
Company or business contact details	Name: Alexandra Lovell Position or title: Project Manager (Delivery) Business hours contact number/s: 0413 250 961 After hours contact number/s: 0413 250 961 Email: alovell@squadronenergy.com
Website address:	https://www.squadronenergy.com/
Scheduled activity/activities on EPL:	Chemical Storage Contaminated soil treatment Crushing, grinding or separating
Fee-based activity/activities on EPL:	Contaminated soil treatment (Any annual handling capacity) Crushing, grinding or separating (>30,000-100,000 tonnes / year) Petroleum products storage (>100,000 kilolitres storage capacity)



Notification of relevant authorities

If the incident is classified as an emergency, activate the site's emergency response plan and call 000. Ensure notification as required for a "material" pollution incident (see notes below)

Agency	Contact Number/s
Fire & Rescue NSW / Rural Fire Service	1300 729 579 (reporting only) 000 (if on ground response required)
EPA	02 4224 4110 (Wollongong Office) 131 555 (24 hours)
NSW Health (Wollongong Public Health Unit)	02 4222 5000 (Illawarra Branch - ask for Public Health Officer on call)
SafeWork NSW	131 050 (24 hours)
Wollongong City Council	02 4227 7111 or 1300 557 980
Port Authority of NSW	02 4275 0197 (Vessel Traffic Services Centre (VTSC) 24 hours), VHF Channels 16 & 11
NSW Department of Planning, Housing and Infrastructure (DPHI)	Email notification compliance@planning.nsw.gov.au
NSW Ports (Port Kembla)	02 9316 1190 / 0408 015 185

Notes:

The site's emergency response plan will be produced, administered, and implemented by the Principal Contractor. It will be reviewed by AIE.

The NSW POEO Act requires "material" pollutions incidents to be reported to the EPA, the Ministry for Health, FRNSW, SafeWork NSW and the relevant local council.

Port Authority of NSW is responsible for the movement of vessels into and out of the port of Port Kembla as well as managing information, organising vessel traffic and providing navigational assistance through the 24-hour Vessel Traffic Services Centre (VTSC). Port Authority is also responsible for the provision of emergency response in designated NSW State Waters (as defined in the *Marine Pollution Act 2012*). Port Kembla Harbour is designated State waters under the *Marine Pollution Act 2012*. Under the *Marine Pollution Act 2012*, marine pollution incidents are required to be reported to Port Authority of NSW who are responsible for co-ordinating initial assessment and response in Port Kembla. Port Authority of New South Wales will co-ordinate emergency response in the marine areas of the port and will provide information on request to assist ships' masters for advice and services available in the port or locality.

The Conditions of Approval for the Port Kembla Energy Terminal Project require notification to the Department of Planning and Environment (DPE) for any incidents on the site which causes or threaten to cause material harm.

The conditions of the Agreement for Lease require notification to NSW Ports for reportable incidents as defined under the POEO Act.



Community and Neighbour Notification

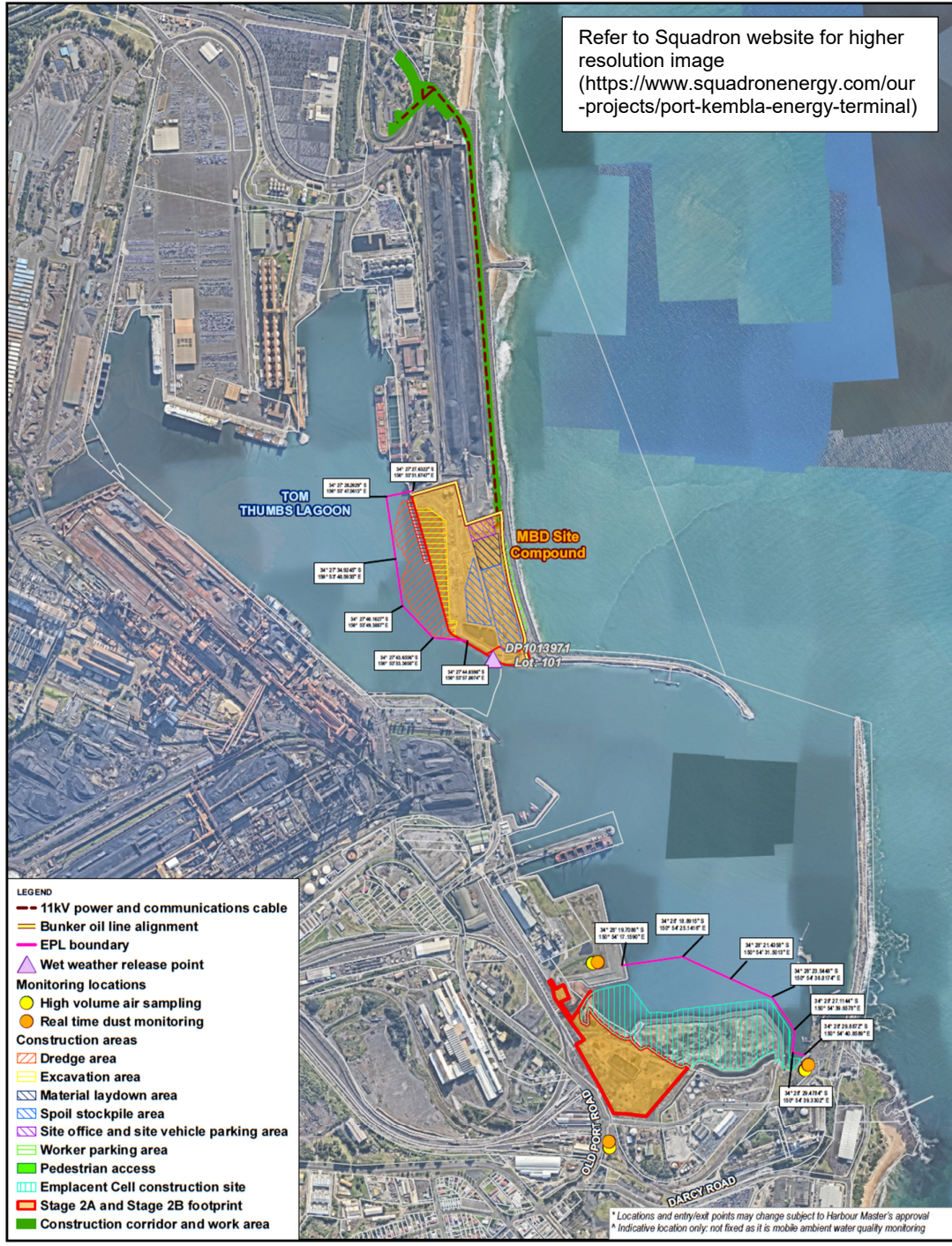
Where required, AIE will utilise the following mechanisms to notify and update community and neighbours of a significant pollution incident:

- Telephone call to the number documented below
- Door knock of surrounding private residents where required
- Presentation to surrounding businesses where required
- Local media release (where appropriate)
- Notification and updates via the AIE website (where necessary)

Neighbouring Stakeholder	Contact Name	Contact Details
BlueScope Steel (Port Kembla)	Environment Office on call	02 4275 7522 (24 hours - ask for Environment Officer on call)
Grain Corp – Berth 105	Control Room	02 4222 6408
Quattro – Berth 103	Control Room / Operations Supervisor	02 4227 1296 / 0497 075 821
Sydney Water Recycled Water Plant	Emergency Line	13 20 90 (24 hours)
Port Authority of NSW	Vessel Traffic Services Centre – 24 hours	02 4275 0197
NSW Ports	Port Kembla Environment Manager	02 9316 1190 / 0408 015 185
AAT Car Terminal – Berth 106	Terminal Manager	0417 069 358
Port Kembla Coal Terminal	Control Tower – 24 hours	02 4221 1807 / 02 4221 1812

Maps

Below is a map showing, location of the premises, surrounding area likely to be affected by a pollution incident, location of potential pollutants on the premises





Actions to be taken during or immediately after a pollution incident

The following immediate actions in the event of a pollution incident:

- Where possible and safe to do so, isolate the source of the spillage
- Activate the site's Emergency Response Plan if required e.g. if danger to life or if spill cannot be contained or will require additional resources to clean-up
- Notify the Project Construction Manager (Primary contact) or HSE Manager
- Assess environmental conditions and alert neighbours if required
- Make notifications to authorities as required (per contact list), including Port Authority of NSW Vessel Traffic Services Centre (for marine-based spills) and NSW Ports
- Consult SDS and if safe to do so, commence clean-up of spill utilising available equipment
- Contain contaminated soil, water, equipment, label and store appropriately until correct disposal can be affected
- Ensure an internal incident report is raised and an investigation into the cause of the pollution incident is commenced

The following immediate action shall be implemented to ensure that the risk of harm to human health is reduced:

- Early notification of neighbours where there is a risk of the pollutant spreading outside of the site's boundary
- Early activation of the site's Emergency Response Plan for significant pollution incidents which will initiate site evacuation
- Use of SDS and available PPE during containment and clean-up operations
- Early notification of Port Authority of NSW for "on water" pollution incidents

The following actions shall be taken to combat the pollution caused by the incident:

- Significant pollution incidents shall be escalated to relevant senior leaders for approval and support in implementing clean-up plan
- Relevant Subject Matter Experts shall be utilised where required to assist with clean-up and ongoing monitoring
- An incident investigation into the cause of the incident shall be undertaken with the aim of identifying causes and implementing actions to prevent a recurrence

Coordinating with persons

The following processes are in place to coordinate with the authorities or persons who have been notified:

- Emergency Response Procedures for the site detail access to the site by responding agents and ongoing support by personnel on the site