



# Saddletop Wind Farm

## In this issue

- Project overview
- Preliminary studies
- Survey
- Community sponsorship

## At a glance



**410k**  
Expected  
homes  
powered



**738MW**  
Expected  
capacity



**300k**  
Expected  
tonnes of  
emissions  
avoided

## Project overview

The proposed Saddletop Wind Farm is located on Wiradjuri Country, around 30km north east of Tumut, NSW. The proposed wind project currently comprises 123 wind turbines and battery storage, providing an expected capacity of 738MW, enough to power around 410,000 homes. The project is south of Squadron Energy's proposed Bookham and Jeremiah Wind Farms. We have been engaging with landowners in the Adjungbilly and Tumorrumba community regarding Saddletop Wind Farm since 2021. A preliminary project layout is shown on page 3.

The project team is currently preparing a Scoping Report for submission to the NSW Department of Planning, Housing and Infrastructure (DPHI). A Scoping Report is a requirement for State Significant Developments. It describes the proposed project and identifies key matters requiring more detailed assessment in the Environmental Impact Statement (EIS) in accordance with relevant legislation and guidelines.

## About us

Squadron Energy is Australia's leading renewable energy company that develops, operates and owns renewable energy assets in Australia. We are 100% Australian owned and have 1.1GW of renewable energy in operation and 900MW under construction. We develop lasting relationships, working alongside local communities from the early stages of planning and assessment through to construction and operation of our projects.

## Preliminary studies

We are engaging independent technical consultants to further understand site constraints to inform the project design, and to identify key areas for further study in the EIS. These preliminary assessments include:

- biodiversity studies to understand the fauna and flora
- route studies to transport large turbine components from port to site
- visual and landscape value
- noise
- cultural and historic heritage
- potential social impacts and benefits.

Squadron Energy will continue to seek feedback from the community and our stakeholders to help shape and design the project in accordance with the findings of ongoing environmental assessments.

### Environmental assessment process



## Survey

We are seeking feedback from the local community through a short survey. The information will be used to inform the wind farm design and preliminary social impact assessment in the Scoping Report.

If you would like to participate, please complete the form via the QR code. If you are unable to complete the form via the QR code, please contact us for alternative ways to participate.

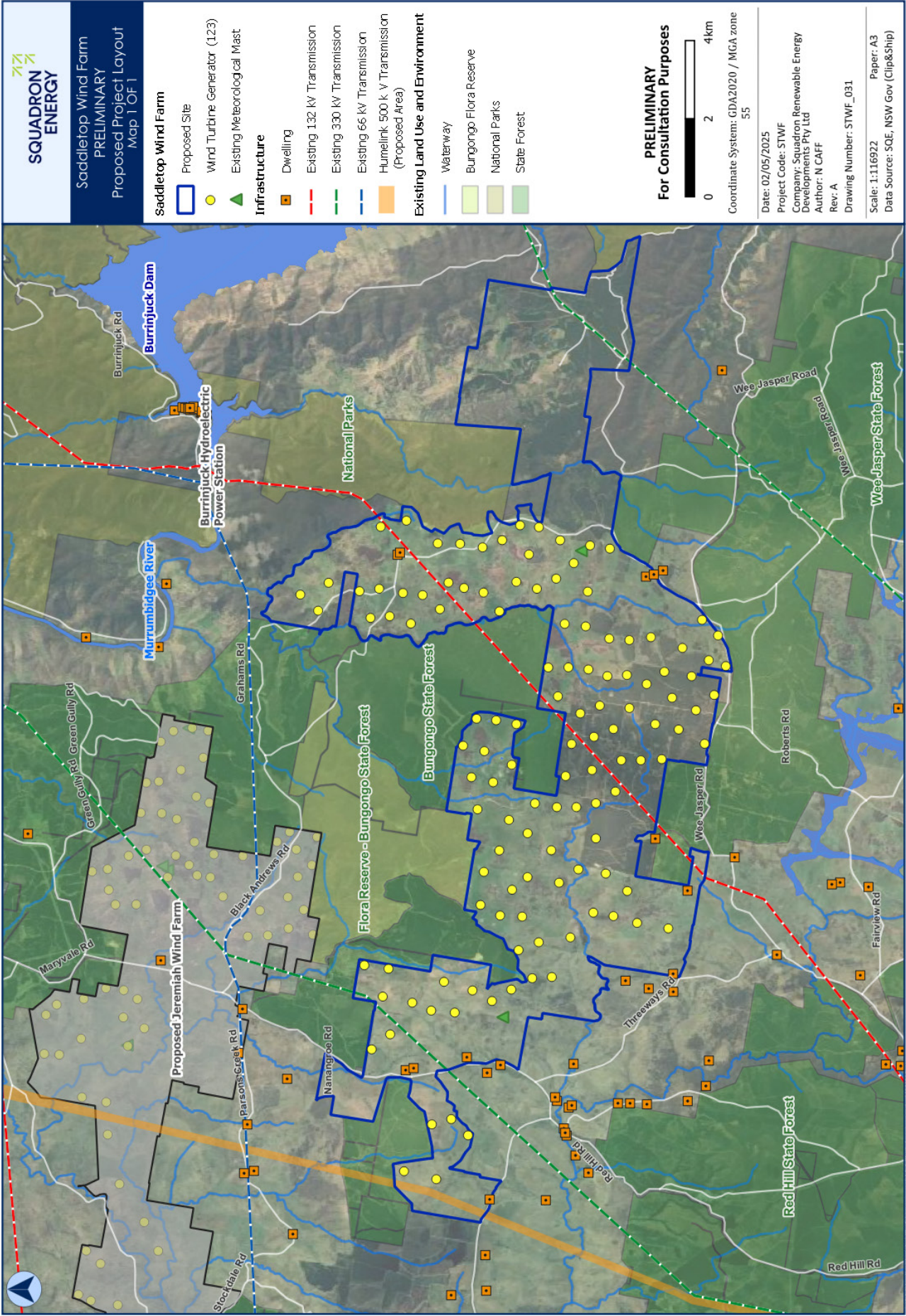


We appreciate your feedback





Preliminary project layout



## Community drop-in session

The Saddletop Wind Farm project team is hosting a community drop-in session on Tuesday 27 May from 2pm to 7pm in the Adjungbilly Hall at Bongongo Public School.

This is an opportunity to learn more about Squadron Energy, the proposed wind farm and meet the project team. We welcome your thoughts and feedback on the preliminary project layout.

### Please join us:

**When:**  
Tuesday 27 May 2025  
Drop in anytime between  
2pm – 7pm

**Location:**  
Adjungbilly Community Hall  
– Bongongo Public School  
Adjungbilly Road  
Adjungbilly NSW 2722

## Community sponsorship

Squadron Energy is dedicated to sharing project benefits with the local community. The community sponsorship program provides funds to support community organisations and events including:

- education and training initiatives
- community development programs
- health and wellbeing
- environmental initiatives
- sport and arts.



We have recently supported:

- The Crawford Angus Charity Campdraft
- Tumut High School – Senior students' commemorative jackets
- The Falling Leaf Festival
- The Tumut Agricultural Show
- Oatleys Creek Landcare – Parsons Creek Road
- The Off Grid throwdown – Tumut
- Gundagai RSL – Richard Norden Memorial
- Tumut Rodeo.

Applications are open for community sponsorship. Please visit:

[www.squadronenergy.com/community/communitysponsorship](http://www.squadronenergy.com/community/communitysponsorship) or contact us using the details below for more information.

Alternatively, scan the QR code to complete the community sponsorship application online.



## Contact us

**Jessica Barr - Senior Project Manager**

Phone: 0480 045 620

Email: [saddletopwind@squadronenergy.com](mailto:saddletopwind@squadronenergy.com)

Web: [saddletopwindfarm.com.au](http://saddletopwindfarm.com.au)

**SQUADRON  
ENERGY**

[squadronenergy.com](http://squadronenergy.com)