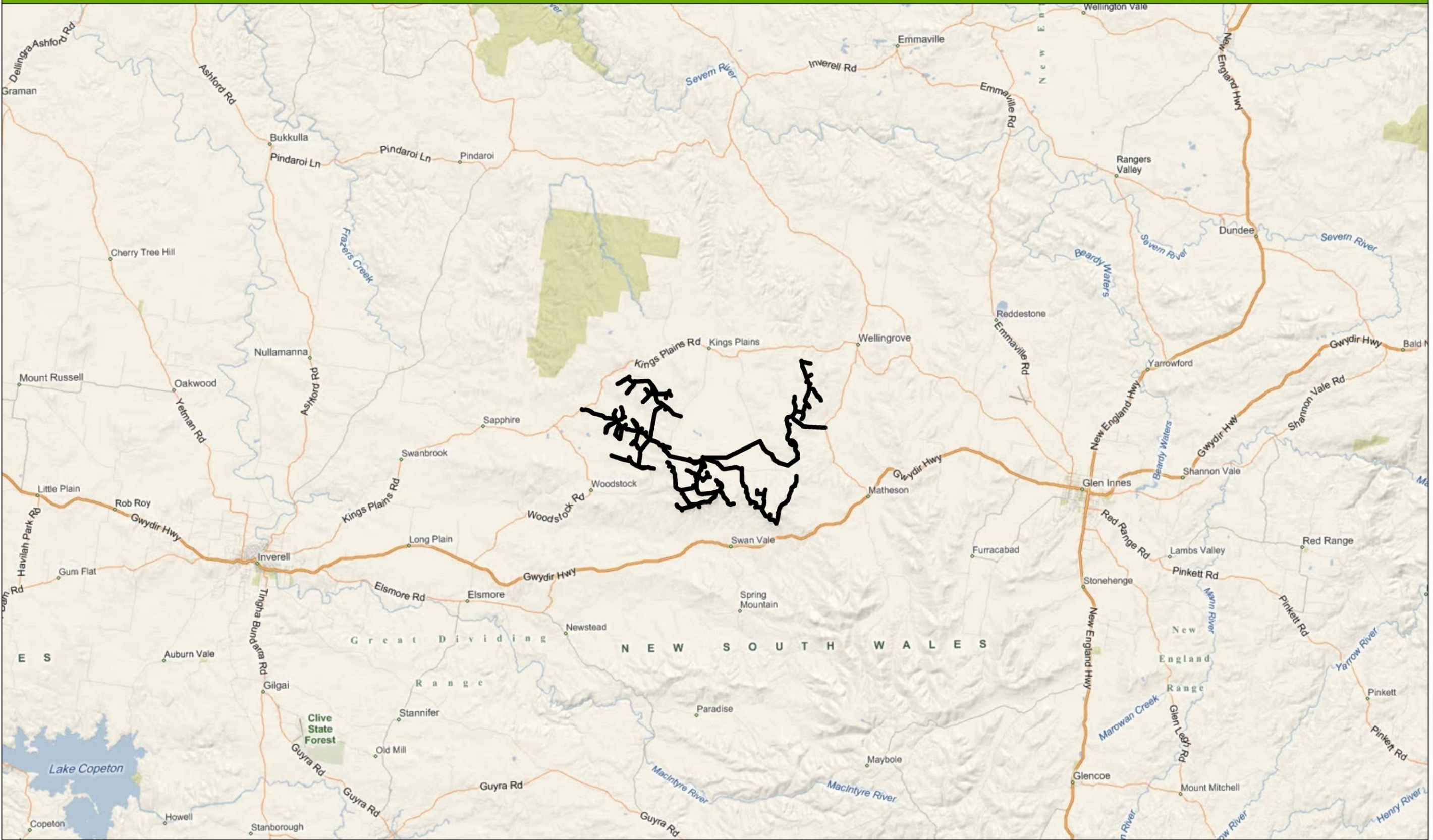
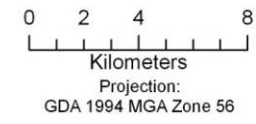


Location



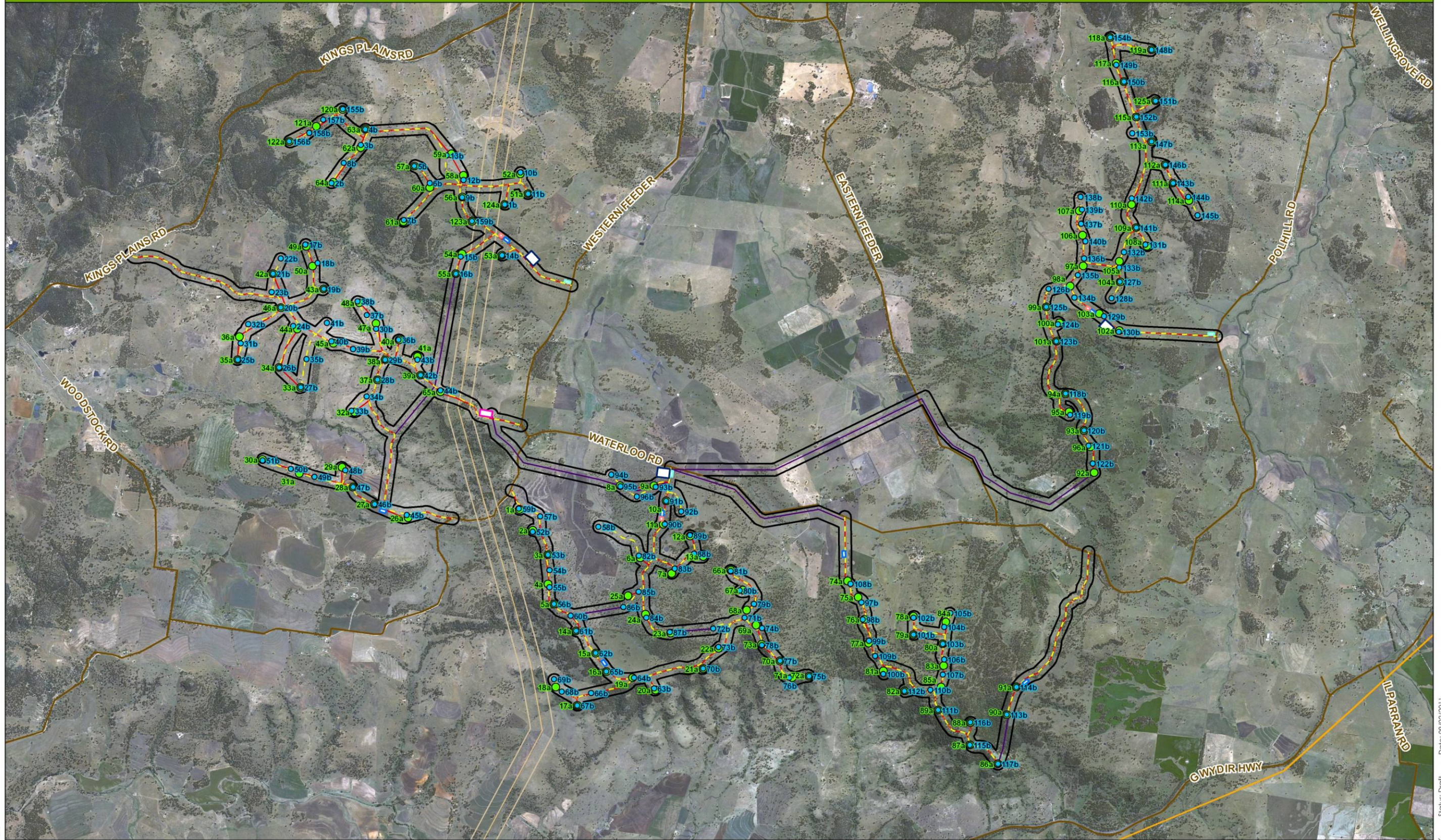
Legend
■ Study Area



Datum/Projection: GDA 1994 MGA Zone 56

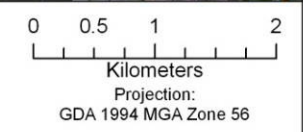
Date: 27/01/2011
Status: Draft
Approved by: TK
Prepared by: VH

Study Area - Turbine Locations and Infrastructure



Legend

| | | |
|---------------------------------------|-------------------------|--|
| Study Area | Construction Facilities | Country Energy 132kV Transmission Line |
| 80m Turbine Layout (159) | Concrete Batching | TransGrid 330kV Powerline |
| 80m Turbine Layout Tracks | Construction Compound | TransGrid 330kV Powerline 185m Buffer |
| 110m Turbine Layout (125) | Rock Crusher | Existing Roads |
| 110m Turbine Layout Tracks | Site Office | |
| Preferred Substation Location | | |
| Preferred Internal Reticulation Route | | |

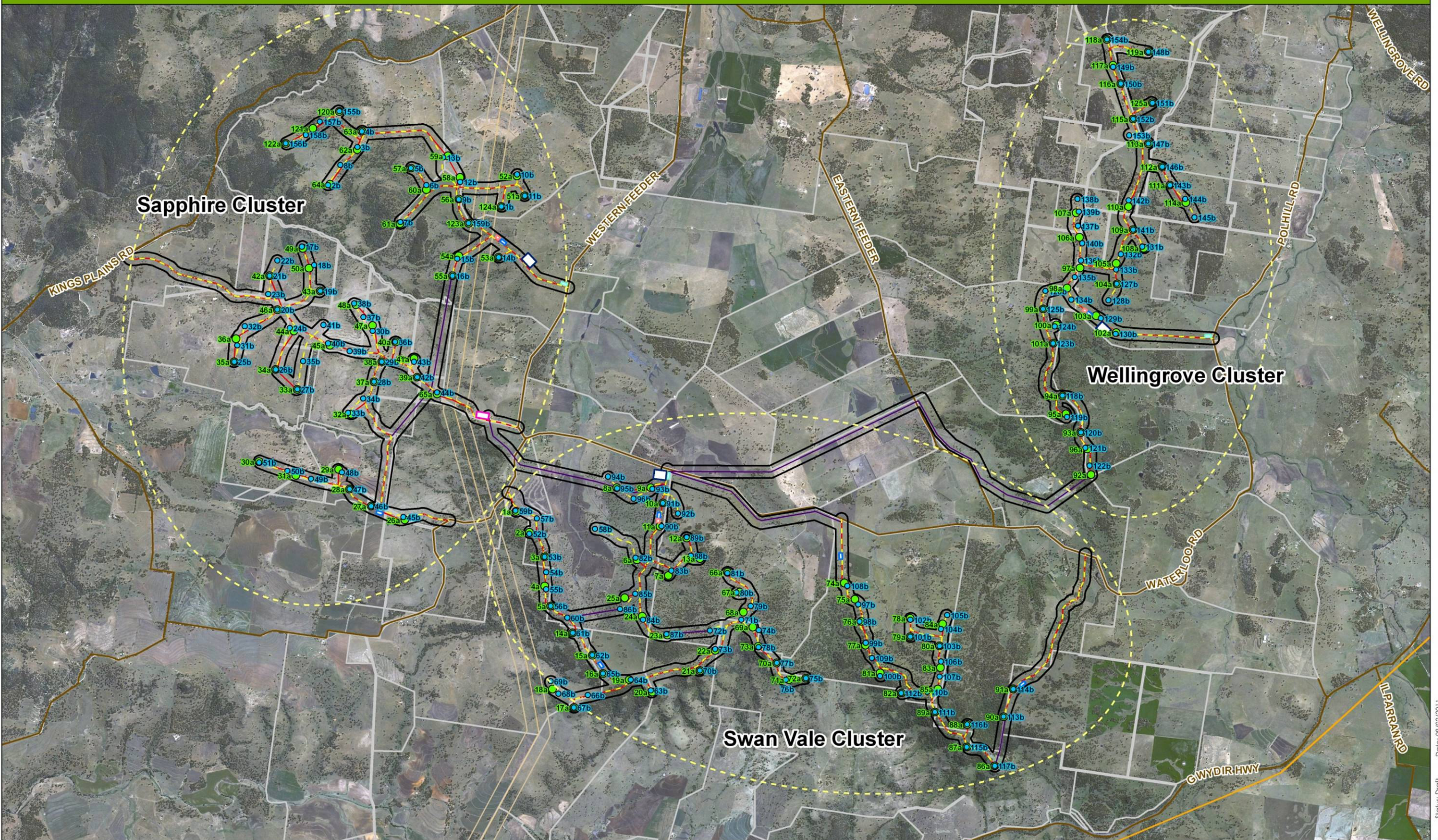


www.ecoaus.com.au

Datum/Projection: GDA 1994 MGA Zone 56

Date: 09/02/2011
Status: Draft
Approved by: TK
Prepared by: VH

Turbine Clusters



| | | | | | |
|---|--|---|--|---|--|
| Legend [Black Outline] Study Area [Blue Circle] 80m Turbine Layout (159) [Yellow Dashed Line] 80m Turbine Layout Tracks [Green Circle] 110m Turbine Layout (125) [Red Dashed Line] 110m Turbine Layout Tracks [Pink Square] Preferred Substation Location [Purple Line] Preferred Internal Reticulation Route | | Construction Facilities [Blue Square] Concrete Batching [Blue Outline] Construction Compound [Red Square] Rock Crusher [Cyan Square] Site Office | | [Orange Line] Country Energy 132kV Transmission Line [Yellow Line] TransGrid 330kV Powerline [Light Yellow Outline] TransGrid 330kV Powerline 185m Buffer [Brown Line] Existing Roads [Grey Outline] Landowner Lots | |
|---|--|---|--|---|--|

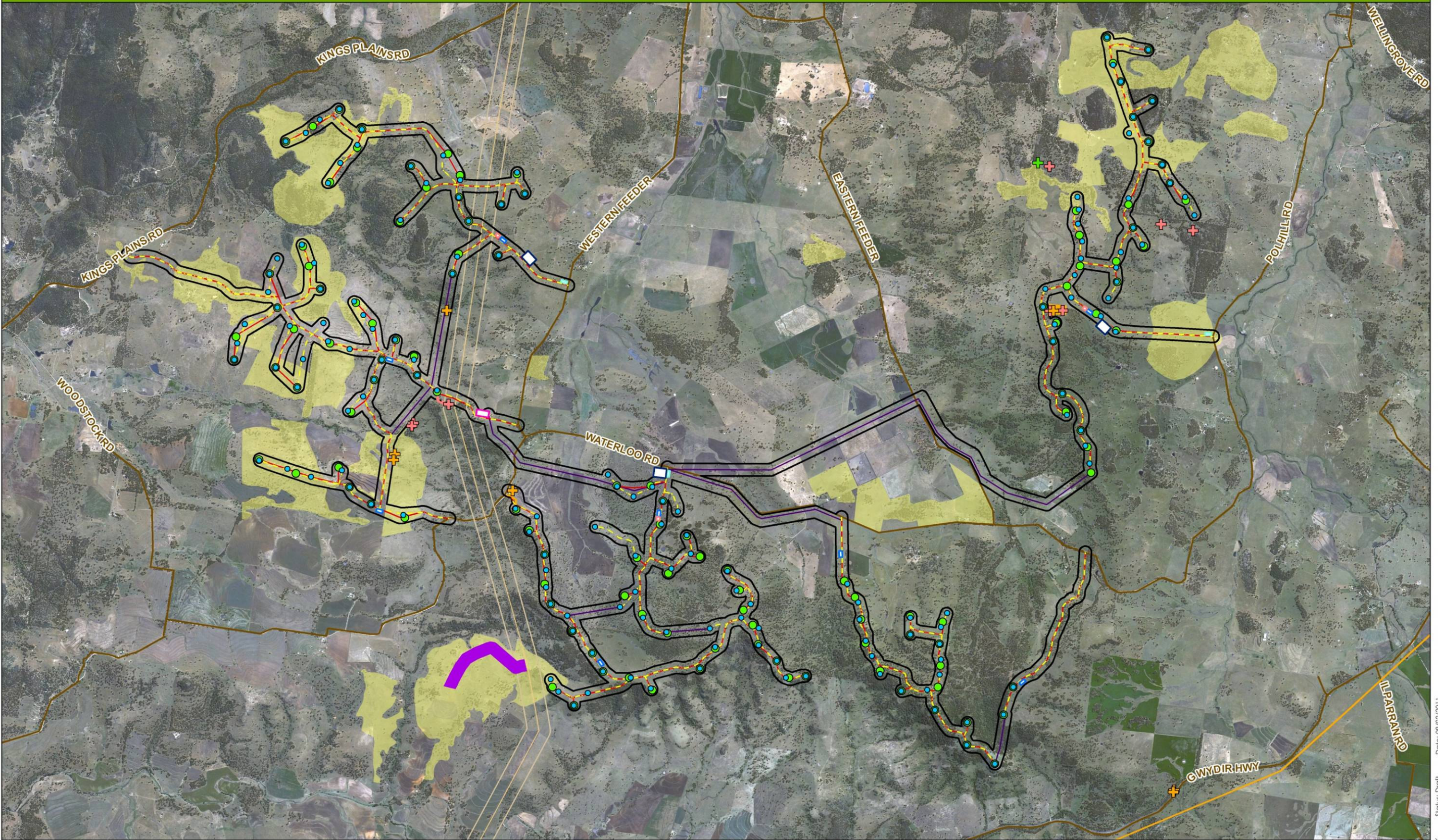
0 0.5 1 2
Kilometers
Projection: GDA 1994 MGA Zone 56

www.ecoaus.com.au

Datum/Projection: GDA 1994 MGA Zone 56

Date: 09/02/2011 Status: Draft Approved by: TK Prepared by: VH

EPBC Listed Threatened Species and Communities



Legend

- Study Area
- 80m Turbine Layout (159)
- 80m Turbine Layout Tracks
- 110m Turbine Layout (125)
- 110m Turbine Layout Tracks
- Preferred Substation Location
- Preferred Internal Reticulation Route

Construction Facilities

- Concrete Batching
- Construction Compound
- Rock Crusher
- Site Office

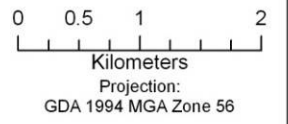
- Country Energy 132kV Transmission Line
- TransGrid 330kV Powerline
- TransGrid 330kV Powerline 185m Buffer
- Existing Roads

EPBC Listed Community

- White Box-Yellow Box-Blakely's
- Red Gum Grassy Woodland and Derived Native Grassland

EPBC Threatened Species

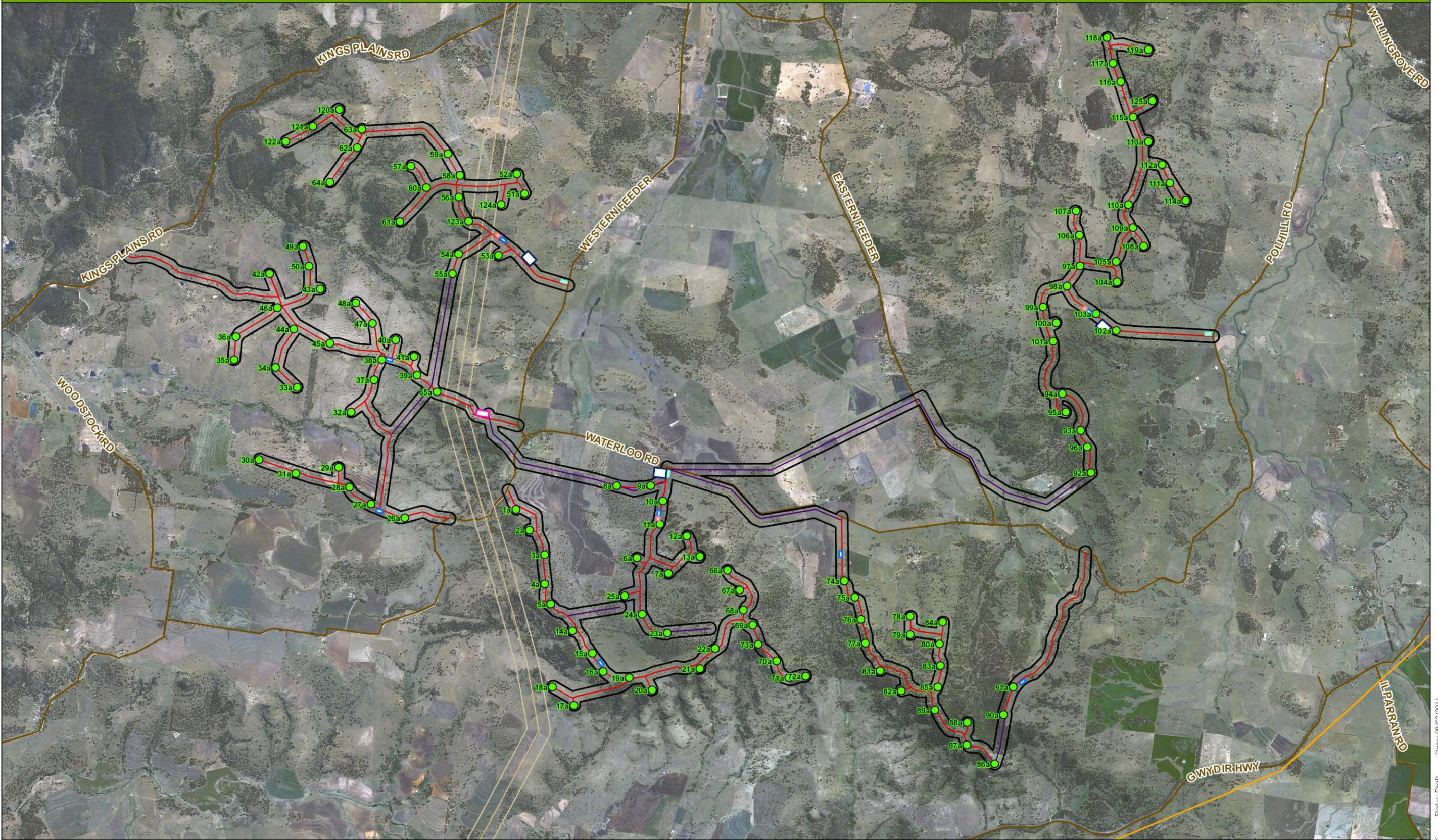
- Bothriochloa biloba*
- Dichanthium setosum*
- Thesium australe*
- Eucalyptus mckieana*



Datum/Projection: GDA 1994 MGA Zone 56

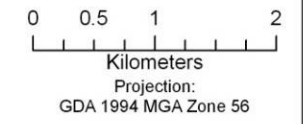
Date: 09/02/2011 Status: Draft Approved by: VH Prepared by: VH

110m Turbine Layout



Legend

| | | |
|---------------------------------------|--------------------------------|--|
| 110m Turbine Layout Study Area | Construction Facilities | Country Energy 132kV Transmission Line |
| 110m Turbine Layout (125) | Concrete Batching | TransGrid 330kV Powerline |
| 110m Turbine Layout Tracks | Construction Compound | TransGrid 330kV Powerline 185m Buffer |
| Preferred Substation Location | Rock Crusher | Existing Roads |
| Preferred Internal Reticulation Route | Site Office | |



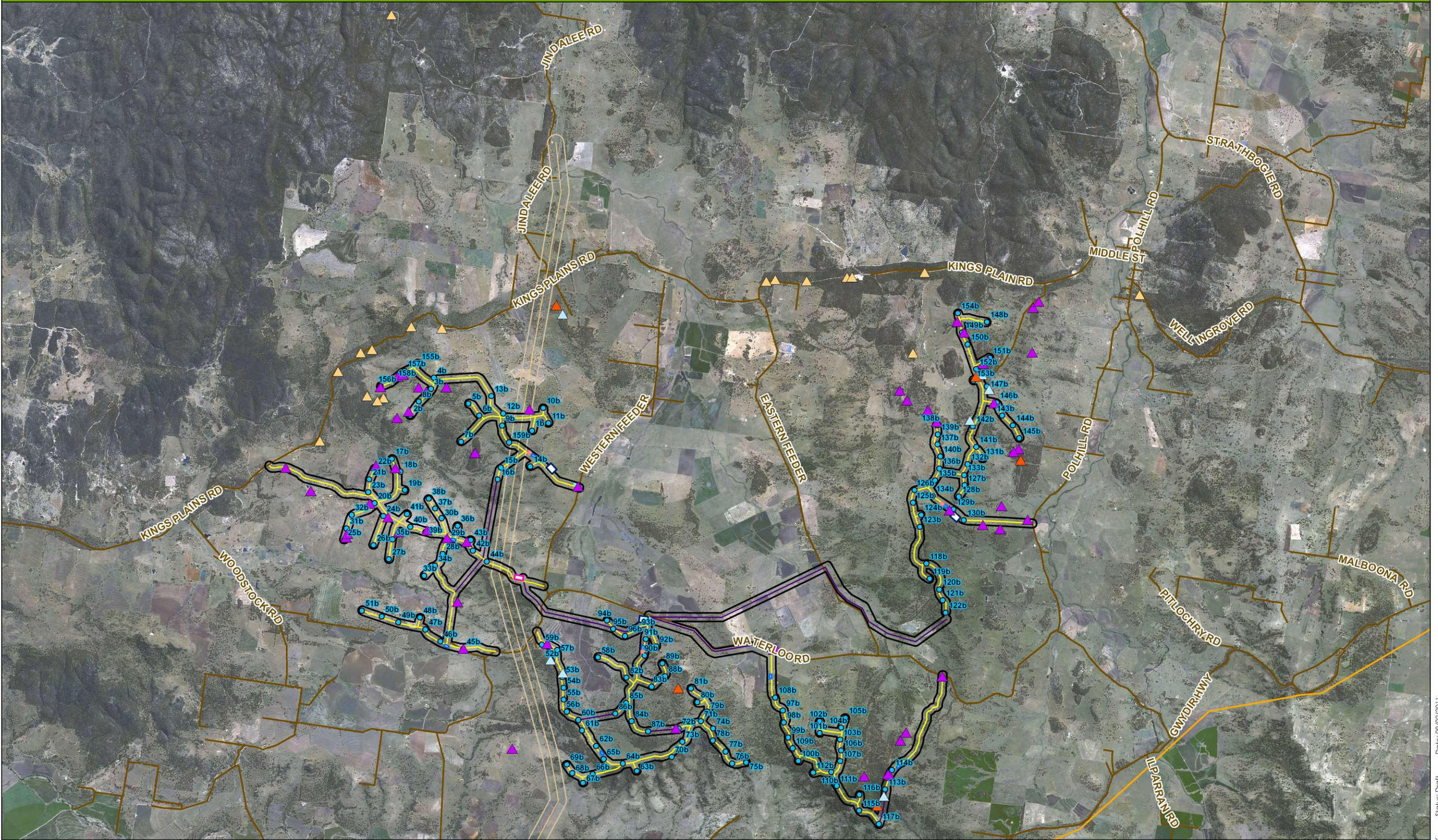
Projection:
GDA 1994 MGA Zone 56

eco logical
AUSTRALIA
www.ecoaus.com.au

Datum/Projection: GDA 1994 MGA Zone 56

Date: 09/02/2011
Status: Draft
Approved by: TK
Prepared by: VH

Threatened Flora Surveys

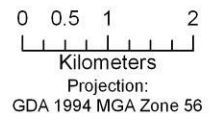


- Legend**
- 80m Turbine Layout Study Area
 - 80m Turbine Layout (159)
 - 80m Turbine Layout Tracks
 - Preferred Substation Location
 - Preferred Internal Reticulation Route

- Construction Facilities**
- Concrete Batching
 - Construction Compound
 - Rock Crusher
 - Site Office

- Country Energy 132kV Transmission Line
- TransGrid 330kV Powerline 185m Buffer
- TransGrid 330kV Powerline
- Existing Roads

- Surveys**
- Biobank Benchmark Plots
 - Biobanking Condition Plot
 - Floristic Plot
 - Vegetation Validation



Datum/Projection: GDA 1994 MGA Zone 56

Date: 09/02/2011
Status: Draft
Approved by: YH
Prepared by: YH

Vegetation Communities

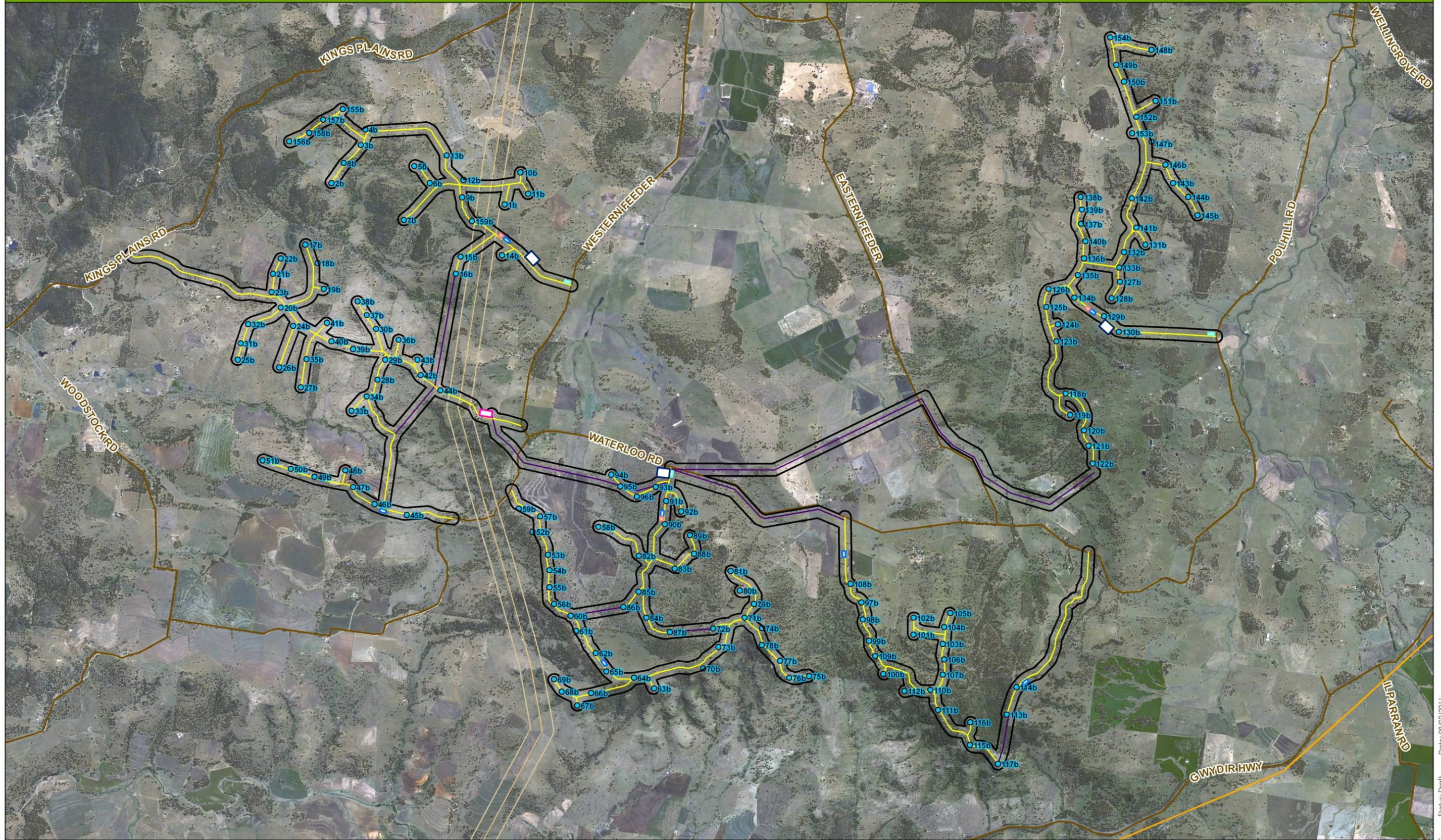


| | | | | | | | | | | | |
|---|--|---|--|--|--|--|--|--|--|--|--|
| Legend Study Area 80m Turbine Layout (159) 80m Turbine Layout Tracks 110m Turbine Layout (125) 110m Turbine Layout Tracks Preferred Substation Location Preferred Internal Reticulation Route | | Construction Facilities Concrete Batching Construction Compound Rock Crusher Site Office | | Country Energy 132kV Transmission Line TransGrid 330kV Powerline TransGrid 330kV Powerline 185m Buffer Existing Roads | | Vegetation Community Black Cypress Pine - Tumbledown Gum - Narrow-leaved Ironbark open forest of northern parts of the Nandewar Bioregion Blakely's Red Gum - Rough-barked Apple - Red Stringybark grassy open forest of the western New England Tablelands | | Blakely's Red Gum - Yellow Box grassy open forest or woodland of the New England Tablelands Manna Gum - Rough-barked Apple - Yellow Box grassy woodland/open forest of the New England Tablelands and North Coast Tenterfield Woollybutt - Silvertop Stringybark open forest of the New England Tablelands White Box grassy woodland of the Nandewar and Brigalow Belt South Bioregions Cleared EPBC Listed Community | | 0 0.5 1 2 Kilometers Projection: GDA 1994 MGA Zone 56 | eco logical AUSTRALIA www.ecoaus.com.au |
|---|--|---|--|--|--|--|--|--|--|--|--|

Datum/Projection: GDA 1994 MGA Zone 56

Date: 11/02/2011
Status: Draft
Approved by: TK
Prepared by: VH

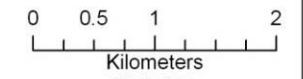
80m Turbine Layout



- Legend**
- 80m Turbine Layout Study Area
 - 80m Turbine Layout (159)
 - 80m Turbine Layout Tracks
 - Preferred Substation Location
 - Preferred Internal Reticulation Route

- Construction Facilities**
- Concrete Batching
 - Construction Compound
 - Rock Crusher
 - Site Office

- Country Energy 132kV Transmission Line
- TransGrid 330kV Powerline
- TransGrid 330kV Powerline 185m Buffer
- Existing Roads



Projection: GDA 1994 MGA Zone 56

