

Spicers Creek Wind Farm


Staging Plan

5 September 2025



Final

Revision Control

Revision	Date	Issue	Author	Reviewed	Approved	Signature
1	5/9/25	Final/Issued	Z. Jokadar	C. Somerville	C. Somerville	

Confidentiality

This document contains proprietary and confidential information, which is provided on a commercial in confidence basis. It may not be reproduced or provided in any manner to any third party without the consent of Squadron Energy Services Pty Ltd.

© Copyright Squadron Energy Services Pty Ltd 2025. This work and the information contained in it are the copyright of Squadron Energy Services Pty Ltd. No part of this document may be reprinted or reproduced without the consent of Squadron Energy Services Pty Ltd.

Disclaimer

Whilst every effort has been made to ensure the accuracy of this information, the publisher accepts no responsibility for any discrepancies and omissions that may be contained herein.

Contents

1	Introduction.....	1
2	Statutory Context	3
2.1	Purpose of staging	3
2.2	Management plans.....	3

Figures

Figure 1 :Approved Project Layout.....	2
Figure 2: SCWF Staging Plan	5

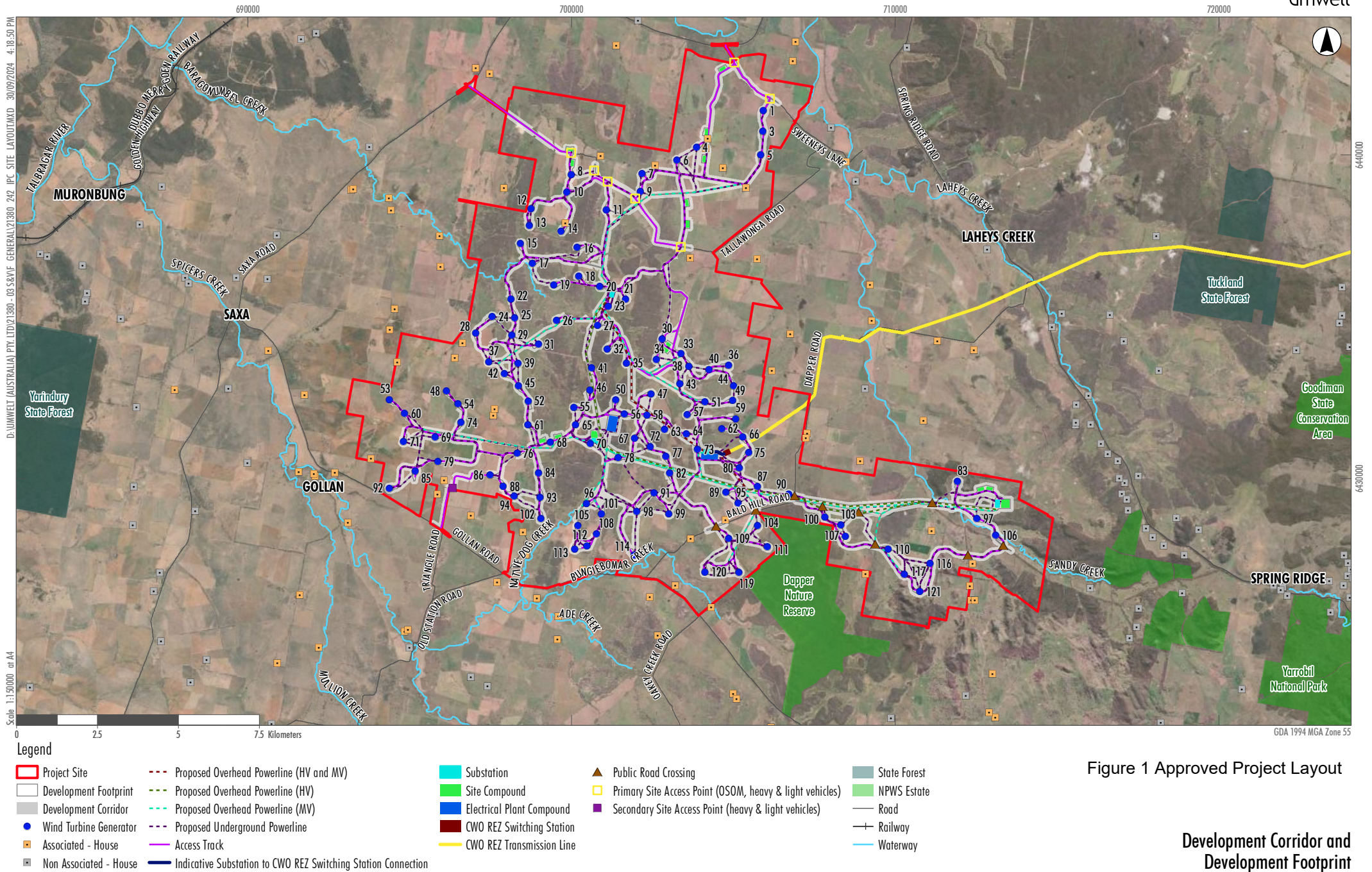
1 Introduction

The Proponent, Spicers Creek Wind Farm Pty Ltd (SCWF), has obtained Development Consent for the construction, operation, maintenance, and decommissioning of the Spicers Creek Wind Farm (the Project). The Project is located approximately 25 km north west of Gulgong and 35 km north east of Wellington in the Central West Orana region of NSW, within the Dubbo Regional and Warrumbungle Shire Local Government Areas (LGA).

The Project will have a capacity of approximately 700 megawatts (MW), with the potential to power approximately 397,000 homes. The Project comprises up to 117 wind turbine generators (WTGs), battery storage and associated infrastructure including, access roads, hardstands, laydown areas, internal electrical reticulation, temporary construction compounds, rock crushing facilities, concrete batching plant(s), substations, an operations and maintenance facility, overhead transmission line and switching stations. The Development Footprint comprises a total area of approximately 1,471 ha.

Refer to Figure 1 for the approved Project layout. This layout will be further refined throughout detailed design and a Final Layout Plan will be prepared and submitted to the NSW Department of Planning, Housing and Infrastructure (DPHI) in accordance with Development Consent Condition C8.

A full description of the Project is provided in the Submissions Report which can be accessed on the Spicers Creek Wind Farm website at <https://www.squadronenergy.com/our-projects/spicers-creek-wind-farm>.



2 Statutory Context

The Project is State significant Development (SSD) as defined under State Environmental Planning Policy (Planning Systems) 2021 (Planning Systems SEPP). An application for consent was lodged with DPHI (the Department) and consent was granted by the Independent Planning Commission (IPC) on 31 October 2024 under Section 4.38 of the NSW Environmental Planning and Assessment Act 1979 (EP&A Act), SSD-41134610, subject to a set of Conditions of Consent.

This Staging Plan should be read in conjunction with the approved SSD-41134610 conditions of consent.

2.1 Purpose of staging

SCWF proposes to construct and operate the Project in two stages commencing with the wind farm followed by the Battery Energy Storage System (BESS). The staging plan is shown in Figure 2.

- Stage 1 -construct and operate the Wind Farm component (planned to commence in early Financial Year 2027)
- Stage 2 – construct and operate the BESS component

Decommissioning is proposed at the end of the Wind Farm's anticipated 30-year operational life, unless upgrades and re-energisation of the facilities are pursued and an extension of the Conditions of Consent is granted.

Given the staged delivery of the Project, it is important that the required management plans are tailored to the environmental issues, risks, and Conditions of Consent relevant to each Stage. Accordingly, SCWF proposes to prepare and submit Strategies, Plans, and Programs on a staged basis, in accordance with Schedule 2, Conditions C3(a) and C6 of the Development Consent (SSD-41134610).

C3. With the approval of the Planning Secretary, the Applicant may:

(a) Prepare and submit any strategy, plan or program required by this consent on a staged basis (if a clear description is provided as to the specific stage and scope of the development to which the strategy, plan or program applies, the relationship of the stage to any future stages and the trigger for updating the strategy, plan or program).

C6. If the Planning Secretary agrees, a strategy, plan or program may be staged without addressing particular requirement of the relevant condition of this consent if those requirements are not applicable to the particular stage.

SCWF obtained approval, to stage the Project's Management Plans from the NSW Planning Secretary on 19 August 2025.

2.2 Management plans

A number of management plans are required by the Project's Conditions of Consent. These will be developed in accordance with the relevant conditions, applicable standards and guidelines, and industry best practice. The plans will outline project requirements, ensure compliance with the Conditions of Consent, and provide measures to manage potential environmental and community impacts that may arise during the development.

The key management plans applicable to the Project include (but are not limited to):

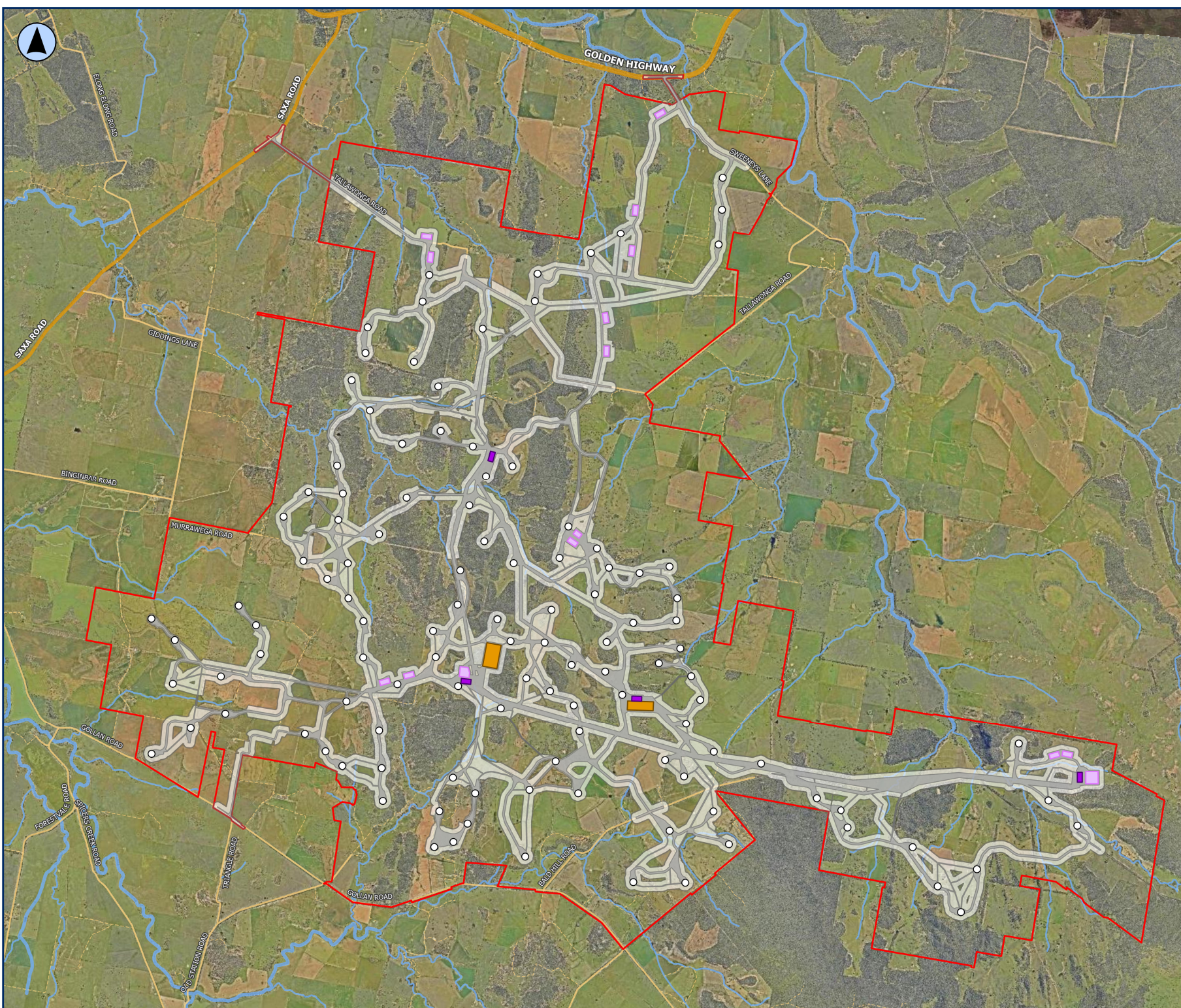
- Soil and Water Management Plan (condition of consent B21)
- Biodiversity Management Plan (condition of consent B26)
- Bird and Bat Adaptive Management Plan (condition of consent B27)
- Heritage Management Plan (condition of consent B29)

- Traffic Management Plan (condition of consent B36)
- Fire Safety Study (condition of consent B41)
- Emergency Plan (condition of consent B47)
- Accommodation and Employment Strategy (condition of consent B50)
- Environmental Management Strategy (condition of consent C1)

Construction works and operation of the Project will be staged in accordance with this plan; noting this staging plan and the Management Plans detailed above may be reviewed and if required revised to incorporate any information or details relevant to the construction or operation of the BESS.

Updates to the Management Plans may also occur where opportunities for improvement have been identified to ensure ongoing compliance is achieved and impacts are appropriately managed.

It is also noted that all management plans will be prepared, reviewed and updated in accordance with the requirements of the consent, including consultation and engagement with relevant agencies and representatives.



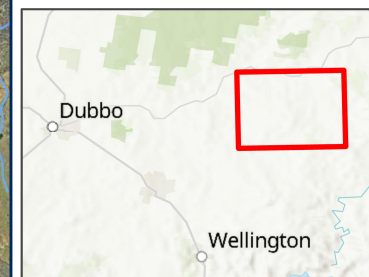
Spicers Creek Wind Farm
Project Stages
Figure 2 SCWF Staging Plan

STAGE 1

- WTG
- Site Compound
- Substation
- Development Footprint
- Development Corridor
- Project Site

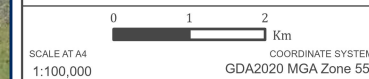
STAGE 2

- Electrical Plant Compound



PROJECT CODE SCWF	MAP # 1	REV 1
AUTHOR DV	LAST SAVED 5/09/2025 2:56 PM	
CHECKED BY ZJ	DATE 05/09/2025	

DISCLAIMER
© Squadron Energy Services Pty Ltd 2025. No part of this document may be copied, reproduced, altered, stored, published or distributed without prior permission in writing from Squadron Energy Services Pty Ltd.



Squadron Energy is Australia's leading renewable energy company. Proudly Australian owned, our mission is to be a driving force in Australia's transition to a clean energy future by providing green power to our customers.

We develop, operate and own renewable energy assets in Australia, with 1.1 gigawatts (GW) of renewable energy in operation.

With proven experience and expertise across the project lifecycle, we work with local communities and our customers to lead the transition to Australia's clean energy future.

Squadron Energy acknowledges the Traditional Owners of Country throughout Australia. We pay our respects to Elders past, present, and emerging.

