



SPICERS CREEK WIND FARM

PROJECT UPDATE

RECENT ACTIVITIES

COMMUNITY INFORMATION SESSIONS

COMMUNITY SPONSORSHIP

PROJECT UPDATE

THE SPICERS CREEK WIND FARM TEAM HAVE BEEN CONTINUING INVESTIGATIONS TO DEVELOP A PROJECT LAYOUT TO TAKE FORWARD INTO THE NSW PLANNING SYSTEM.

Stage 1 of the Spicers Creek Wind Farm (SCWF) is located on the northern side of Gollan Road, within the area bounded by the Golden Highway to the north, Saxa Road to the west, and the proposed electricity transmission corridor for the Central-West Orana Renewable Energy Zone to the east.

As discussed in our September newsletter, investigations into the area to the south of Gollan Road will continue, however this area will take longer to plan and is likely to be developed as a second stage of the wind farm.

Investigations and feedback from our ongoing discussions with landowners and other stakeholders have helped shape the preliminary project layout which is shown on page 3.

Wind modelling, studies to date and landowner feedback indicate the potential for up to 122 wind turbines in the Stage 1 area.

RECENT ACTIVITIES Biodiversity Surveys

Following early vegetation mapping and initial fieldwork in April 2021, detailed biodiversity surveys started in spring 2021, in line with the requirements of the *Biodiversity Conservation Act 2016* (NSW).

These studies will continue across the project site throughout each season, and will comprise land-based surveys, bird and bat utilisation surveys, and assessment of aquatic habitat.



Wind Monitoring

A new 110 metre wind monitoring mast was installed in October to complement the ongoing wind monitoring program for SCWF.

The data obtained from the new mast will increase the accuracy of our wind analysis. The mast houses monitoring sensors which measure wind speed, wind direction, temperature, air pressure and humidity.

A due diligence assessment was completed for the mast and the team worked closely with the landowners to ensure the location will have minimal interference with their land use and avoids environmental sensitive areas.

The mast is painted in accordance with standard aviation safety requirements and has been reported to aviation authorities for recording on maps and charts. A further monitoring mast site is being investigated.

Light Detection and Ranging (LiDAR) surveys

An airborne LiDAR survey was undertaken across the site to help us understand the landscape and topography with more accuracy, to facilitate further technical studies.

Landowner Consultation

CWP Renewables has been working with landholders in the project area since 2019. Listening to and considering feedback is a key step in the process before taking a project layout into the planning system. Building on our understanding of the views already provided by the community, the project team met with potential host landowners and neighbours in November 2021 and January 2022 respectively, to discuss the layout and obtain feedback. Where practicable, the layout has been re-shaped to incorporate the feedback provided.

NEXT STEPS

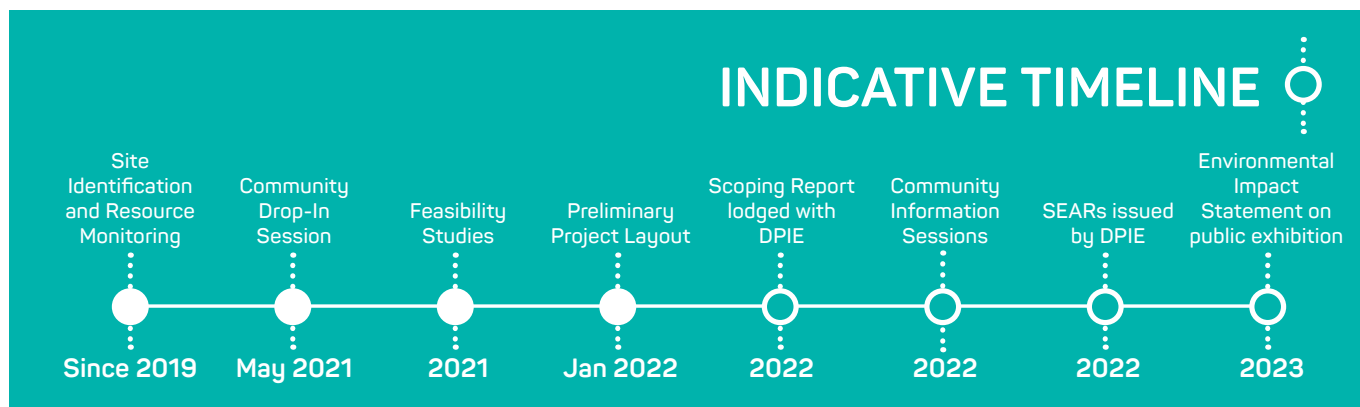
Umwelt Environmental and Social Consultants have been engaged as the lead consultant for the environmental assessment of the wind farm. A Scoping Report is now being prepared to request the Secretary's Environmental Assessment Requirements (SEARs) for the project.

An important part of the Scoping Report is to give an early indication of community views on the project. The Scoping Report will outline feedback obtained from the Community Drop-In Session last May and other engagement to date, as well as identify what engagement will be carried out during the preparation of the Environmental Impact Statement (EIS).

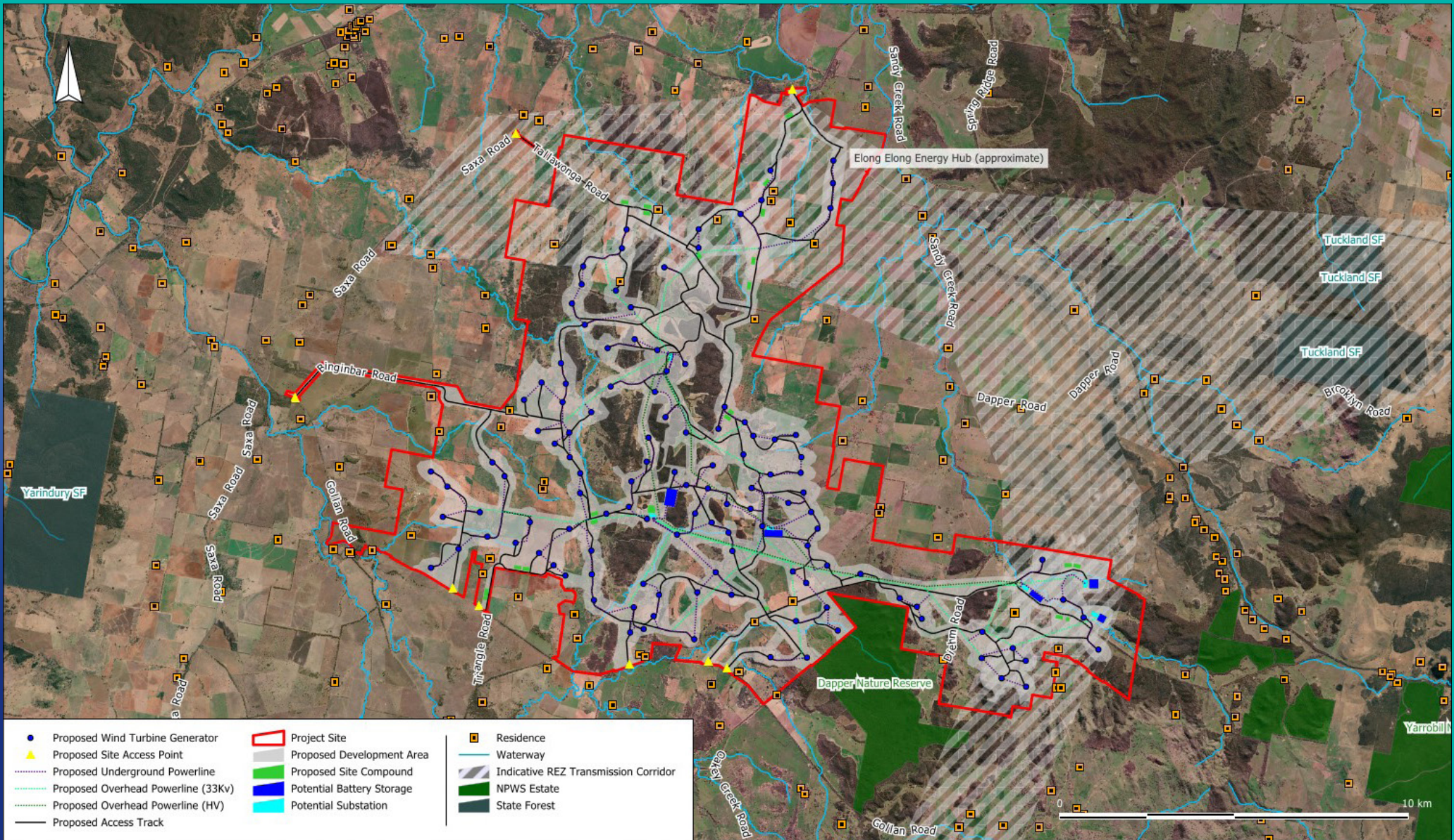
Key matters needing further assessment in the EIS and the proposed approach to assessing each of these matters will also be identified.

The Scoping Report is expected to be lodged with the Department of Planning Industry and Environment (DPIE) in the coming months. It will be published on DPIE's major projects website.

The EIS will be prepared in accordance with the SEARs which will require a range of multi-disciplinary studies to assess the impacts of the project.



PRELIMINARY PROJECT LAYOUT





COMMUNITY INFORMATION SESSIONS

The project team continue to consult with the community and welcome any feedback.

We would like to invite you to a community information session to learn more about the proposed Spicers Creek Wind Farm and provide your feedback and perspectives. Further to the Community Drop-In Session held at Goolma last May, we are proposing to meet with you at two further sessions:

PLEASE JOIN US:

INFORMATION SESSION 2

WHEN: MONDAY 11 APRIL, 2.00PM – 7.00 PM

LOCATION: GOLLAN HALL,
GOLLAN HALL ROAD, GOLLAN

INFORMATION SESSION 3

WHEN: TUESDAY 12 APRIL, 2.00 PM – 7.00 PM

LOCATION: GOOLMA COMMUNITY HALL,
GORRIES LANE, GOOLMA

BBQ and drinks will be provided at both events.

COMMUNITY SPONSORSHIPS

The Spicers Creek Wind Farm Community Sponsorship Program is now open to provide funding or in-kind support to local community organisations and/or community-based activities, events and initiatives.

The initiatives supported to date by Spicers Creek Wind Farm include assisting the Goolma Amenities Committee with contributing to a new ride-on mower to maintain community grounds, supporting the Geurie Lions Club with new catering van equipment, contributing to the refurbishment of the Spicers Creek Community Church building, and sponsoring the Gollan Hall Christmas function.

The Community Sponsorship Program Guidelines and Application Form are available on the CWP Renewables website <https://cwprenewables.com/community>



CONTACT US

CWP RENEWABLES IS COMMITTED TO ONGOING DIALOGUE WITH THE COMMUNITY AND PROJECT STAKEHOLDERS. PLEASE FEEL FREE TO GET IN TOUCH WITH US IF YOU HAVE QUESTIONS OR WOULD LIKE FURTHER INFORMATION.

Trish McDonald – Project Manager
Phone: 0436 694 644

Email: info@spicerscreekwindfarm.com.au

Kristy Old – Project Developer
Phone: 0416 932 549

cwprenewables.com