



# SPICERS CREEK WIND FARM

PROJECT UPDATE

WHAT WE'VE HEARD

PLANNING AND  
ASSESSMENT

GET INVOLVED

## PROJECT UPDATE

We have been continuing stakeholder engagement for Spicers Creek Wind Farm to inform the Social Impact Assessment (SIA) and Environmental Impact Statement (EIS) for the project. The EIS is expected to be submitted in early 2023.

We are also excited to welcome Squadron Energy, an Andrew and Nicola Forrest owned company, as our new owner. Squadron Energy is well known for its commitment to renewable energy and its high-profile investments, such as Clarke Creek Wind Farm in Queensland.

The change in ownership provides us with certainty and the working capital required to progress our projects.



CWP Renewables CEO Jason Willoughby with Andrew Forrest

## A COMPANY UPDATE

We're becoming Squadron Energy

CWP Renewables has joined forces with Squadron Energy to become the Australian market leader in renewable energy.

Our teams have combined to become Squadron Energy, and we now have more than 20 major renewable energy projects either operating, under construction or in development across NSW, Victoria and QLD. We are proudly 100% Australian owned and operated.

Soon the CWP Renewables name and brand will be retired and we look forward to keeping you updated about our projects under the Squadron Energy name and brand.



# ABOUT THE PROJECT

Spicers Creek Wind Farm (SCWF) will have a capacity of approximately 700 megawatts (MW), with the potential to power around 397,000 homes.

The project includes:

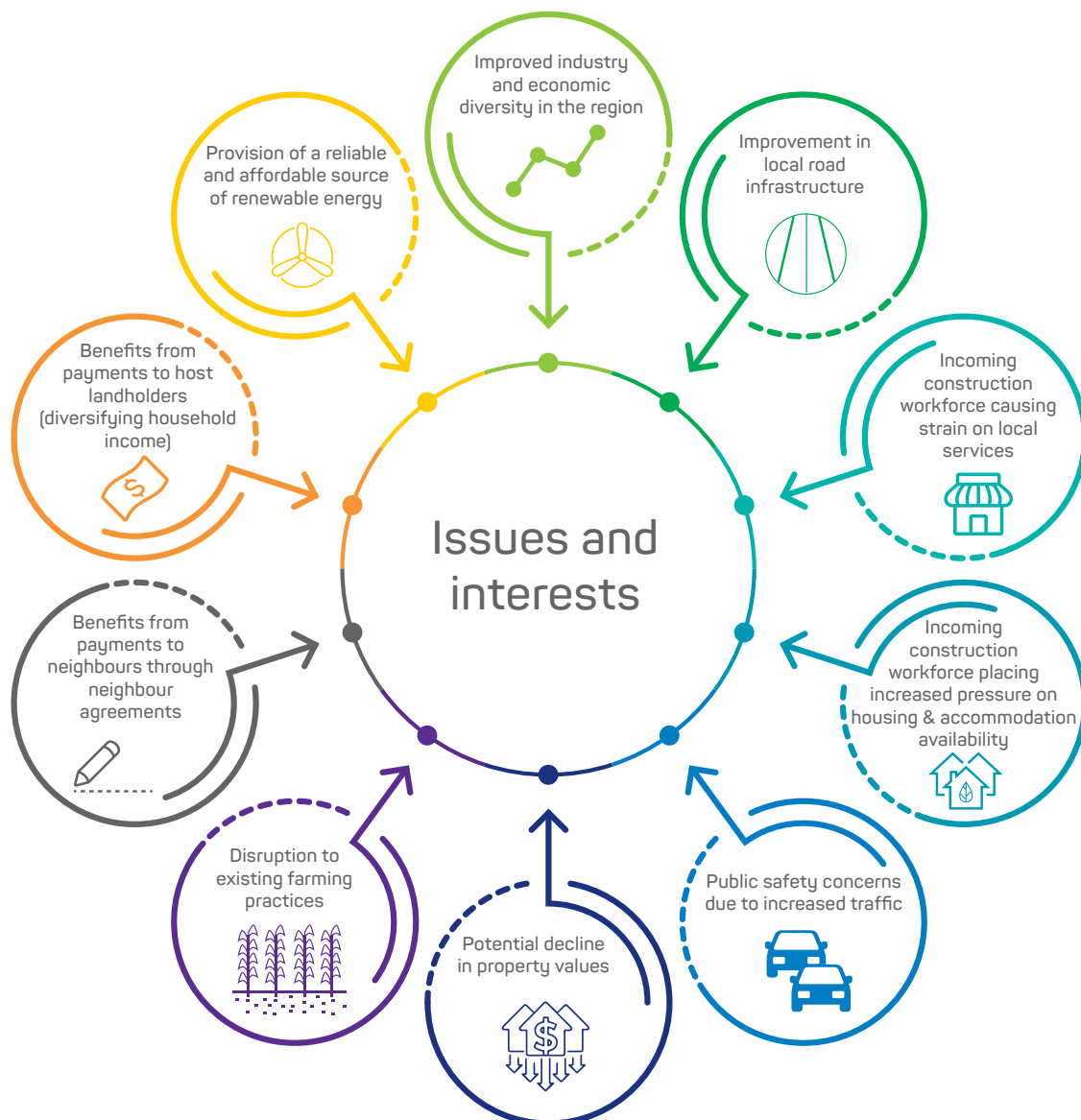
- construction and operation of up to 117 wind turbines
- provision for up to two battery storage facilities
- operation and maintenance buildings
- roads, civil works and electrical infrastructure
- temporary facilities for the construction phase.



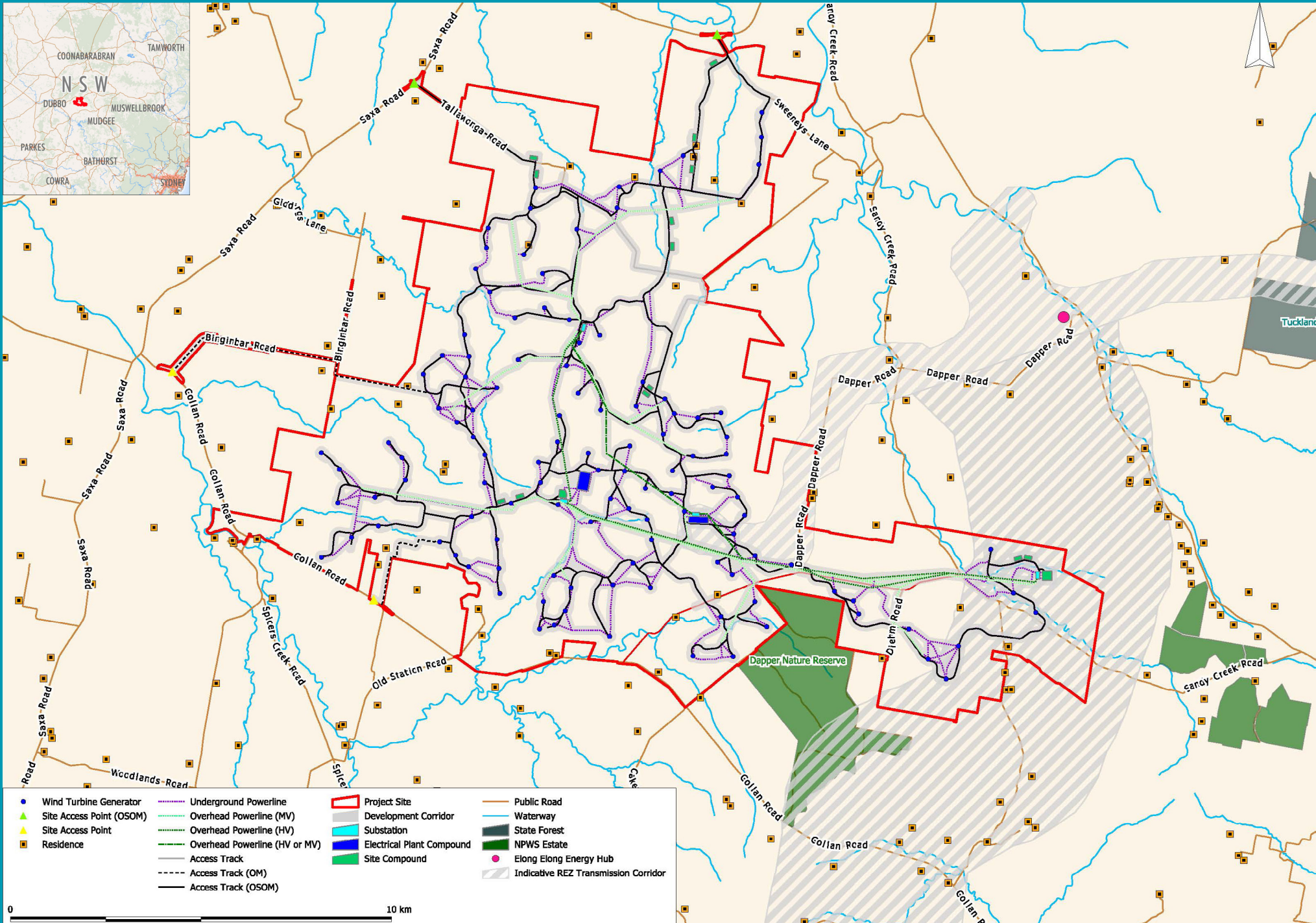
The project has been designed using an iterative approach incorporating community and other stakeholder feedback from the ongoing engagement undertaken by the SCWF project team.

# WHAT WE'VE HEARD

During 2022, Umwelt Environmental and Social Consultants consulted with community members and nearby residents as part of the SIA for the project. This included online community surveys, phone calls and individual interviews. Issues and interests raised through these discussions will continue to be assessed as the wind farm progresses, with the aim of minimising environmental and social impacts and maximising benefits and opportunities.



# PROJECT LAYOUT




- |                            |                                     |                             |  |
|----------------------------|-------------------------------------|-----------------------------|--|
| ● Wind Turbine Generator   | ..... Underground Powerline         | ▭ Project Site              | — Public Road                          |
| ▲ Site Access Point (OSOM) | ..... Overhead Powerline (MV)       | ▭ Development Corridor      | — Waterway                             |
| ▲ Site Access Point        | ..... Overhead Powerline (HV)       | ▭ Substation                | ■ State Forest                         |
| ■ Residence                | ..... Overhead Powerline (HV or MV) | ▭ Electrical Plant Compound | ■ NPWS Estate                          |
|                            | — Access Track                      | ▭ Site Compound             | ● Elong Elong Energy Hub               |
|                            | - - - Access Track (OM)             |                             | ▨ Indicative REZ Transmission Corridor |
|                            | — Access Track (OSOM)               |                             |  |

0 10 km


# PLANNING AND ASSESSMENT PROCESS

SCWF is being assessed under the NSW State Significant Development planning process and the EIS is expected to be lodged in early 2023.

## ENVIRONMENTAL AND SOCIAL IMPACT ASSESSMENT PROCESS:

EIS Activities and Outputs	SIA Activities and Outputs	
<b>SCOPING</b>		
<b>PRE-LODGE</b>	Preliminary social & environmental assessment studies commence	Engagement with local landholders and key stakeholders
	Lodgement of Scoping Report to the DPE*	
	DPE issues Secretary Environmental Assessment Requirements (SEARs)	
<b>EIS PREPARATION</b> 		
<b>DEVELOPMENT APPLICATION (DA)</b>	Preparation of assessment studies	Continued engagement with local landholders & key stakeholders
	Lodgement of DA and EIS, including SIA	Preparation of SIA
<b>PUBLIC EXHIBITION</b>		
DPE places EIS on public exhibition		
<b>RESPONDING TO SUBMISSIONS</b>		
Preparation of Submissions Report that addresses how submissions have been addressed		
<b>ASSESSMENT</b>		
DPE assesses the Project and prepares its findings		
<b>DETERMINATION</b>		
Consent authority decides whether to approve or refuse the Project, including conditions of consent if approved		
<b>POST APPROVAL</b>		
DPE regulates Project to ensure compliance with the conditions of consent	Implementation of mitigation and enhancement measures and monitoring and management	

Engagement with potentially affected people and other interested parties

 We are here

\*DPE - Department of Planning and Environment

# GET INVOLVED

You are invited to come along to our upcoming Community Drop-In Sessions to understand more about the EIS studies and provide your feedback and perspectives.

Please join us:

- ▶ **WHEN:** Tuesday 28 February, 10 AM – 1 PM  
**LOCATION:** Gollan Hall  
Gollan Hall Road, Gollan
- ▶ **WHEN:** Tuesday 28 February, 4 PM – 7 PM  
**LOCATION:** Goolma Community Hall  
Gorries Lane, Goolma
- ▶ **WHEN:** Wednesday 1 March, 10 AM – 1 PM  
**LOCATION:** Dunedoo Jubilee Memorial Hall  
154 Bolara St, Dunedoo

BBQ and drinks will be provided at all three Community Drop-In Sessions.



Umwelt Environmental and Social Consultants will attend these sessions, but if you are unable to make it and would like to have your say for the SIA, please contact Rhiannon at Umwelt on: 1300 793 267 or social-team@umwelt.com.au

We look forward to your ongoing participation and involvement. Please contact our team at any time if you have feedback or questions.

## CONTACT US

TRISH MCDONALD – Project Manager  
Phone: 1800 095 754

KRISTY OLD – Project Developer  
Phone: 1800 095 754

Register for updates

Scan the QR code and select 'Contact' to subscribe to our latest news.



[cwprenewables.com](http://cwprenewables.com)