



Notification of approval decision

Spicers Creek Wind Farm, Elong Elong, NSW (EPBC 2022/09387)

This decision is made under section 130(1) and 133(1) of the *Environment Protection and Biodiversity Conservation Act 1999* (EPBC Act). Note that section 134(1A) of the EPBC Act also applies to this approval. That provision provides, in general terms, that if the approval holder authorises another person to undertake any part of the Action, the approval holder must take all reasonable steps to ensure that the other person is informed of any conditions attached to this approval, and that the other person complies with any such conditions.


Approved Action

person to whom the approval is granted (approval holder)	SCWF Project Co Pty Ltd ACN: 681 998 818
Action	To install, operate, maintain and decommission a wind farm and associated infrastructure, Sweeneys Lane, Elong Elong, NSW [See EPBC Act referral 2022/09387 subject to the variation of the Action accepted by the Minister under section 156B on 12 September 2024].

Approval decision

decision	My decision on whether or not to approve the taking of the Action for the purposes of each controlling provision for the Action are as follows.	
	Controlling Provision	Decision
	Listed threatened species and communities (section 18 and section 18A)	Approved
	Listed migratory species (section 20 and section 20A)	Approved
period for which the approval has effect	This approval has effect until 4 March 2060	
conditions of approval	The approval is subject to conditions under the EPBC Act as set out in Annexure A.	

Person authorised to make decision

name and position	Sarah Reachill A/g Branch Head Environment Assessments NSW and ACT Branch
signature	
date of decision	4 March 2025

Annexure A

Note: Words and terms appearing in **bold** (excluding headings) have the meaning assigned to them at **Part C – Definitions**.

Part A – Avoidance, mitigation, and compensation conditions

IMPLEMENTATION OF NSW APPROVAL ADMINISTRATIVE CONDITIONS

- 1) The approval holder must comply with conditions A2(c), A2(d), A5, A6 and A8(a), A8(d), A8(e) and A8(g) of the **NSW Approval**.

CLEARING AND CONSTRUCTION LIMITS

- 2) The approval holder must not:
 - a) **clear** outside of the **development corridor**.
 - b) **construct** outside of the **development corridor**.
- 3) The approval holder must not **clear** more than:
 - a) 53.8 hectares (ha) of **Box Gum Grassy Woodlands and Derived Native Grasslands**
 - b) 31.2 ha of **Grey Box Grassy Woodlands and Derived Native Grasslands**
 - c) 98.1 ha of **Regent Honeyeater habitat**
 - d) 40.7 ha of **Superb Parrot habitat**
 - e) 15.1 ha of **South-eastern Glossy Black-cockatoo habitat**
 - f) 130.2 ha of **White-throated Needletail habitat**

PRE-CLEARANCE SURVEYS

SOUTH-EASTERN GLOSSY BLACK-COCKATOO PRE-CLEARANCE SURVEYS

- 4) To reduce the risk of **South-eastern Glossy Black-Cockatoo** injury or death from **clearing**, during the **South-eastern Glossy Black-cockatoo breeding season** (March to August), no more than 72 hours prior to commencing **clearing** of any area of **South-eastern Glossy Black-cockatoo habitat**, a **suitably qualified ecologist** must undertake **targeted surveys** within that area to identify the presence and location of any **South-eastern Glossy Black-cockatoo nesting activity**.

SOUTH-EASTERN GLOSSY BLACK-COCKATOO CLEARING IMPACTS

- 5) If **South-eastern Glossy Black-cockatoo nesting activity** is identified, **clearing** must not occur:
 - a) within 100 m of the **nesting activity**, and
 - b) until a **suitably qualified ecologist** has confirmed that:

- i) all young **South-eastern Glossy Black-cockatoo** at the location of the **nesting activity** have vacated the nest, and/or
- ii) **nesting activity** has ceased.

ACTION MANAGEMENT PLANS

Biodiversity Management Plan

- 6) The approval holder must comply with condition B26 of the **NSW Approval**.
- 7) To avoid and mitigate for impacts to **protected matters**, the approval holder must not **commence the Action** unless the Biodiversity Management Plan required under condition B26 of the **NSW Approval** has been approved in accordance with condition B26 of the **NSW Approval**. The approval holder must commence implementing the Biodiversity Management Plan required under condition B26 of the **NSW Approval**, to the extent that it relates to **protected matters**, no later than the **commencement of the Action**, and continue to implement it, or the approved revision, at least until the **completion of the Action**.
- 8) If the **Minister** is not satisfied that the Biodiversity Management Plan is sufficient to protect **protected matters**, the **Minister** may direct the approval holder to include specific measures in the Biodiversity Management Plan. If the **Minister** directs the approval holder to include specific measures, the approval holder must update the Biodiversity Management Plan with the required measures within 20 **business days** of receiving the direction from the **Minister**.
- 9) The approval holder must notify the **department** at the same time as submitting any request to have a revised version of the Biodiversity Management Plan approved by the **NSW Planning Secretary** if those revisions are relevant to **protected matters**. If a revised version of the Biodiversity Management Plan is approved by the **NSW Planning Secretary**, the approval holder must provide the **department** with the approved revised Biodiversity Management Plan within 5 **business days** of its approval and specify what changes have been made from the previous approved version, and any implications of the changes for **protected matters**.

Bird And Bat Adaptive Management Plan (BBAMP)

- 10) The approval holder must comply with condition B27 of the **NSW Approval**.
- 11) The approval holder must submit the BBAMP electronically to the **department** within 10 **business days** of that BBAMP being approved by **NSW Planning Secretary** as required under condition B27 of the **NSW Approval** and prior to **commissioning**.
- 12) If the **Minister** is not satisfied that the BBAMP is sufficient to protect **EPBC Act listed bird species**, the **Minister** may direct the approval holder to include specific measures in the BBAMP. If the **Minister** directs the approval holder to include specific measures, the approval holder must update the BBAMP with the required measures within 20 **business days** of receiving the direction from the **Minister**.
- 13) The approval holder must notify the **department** at the same time as submitting any request to have a revised version of the BBAMP approved by the **NSW Planning Secretary** if those revisions

are relevant to **protected matters**. If a revised version of the BBAMP is approved by the **NSW Planning Secretary**, the approval holder must provide the **department** with the approved revised BBAMP within 5 **business days** of its approval and specify what changes have been made from the previous approved version, and any implications of the changes for **EPBC Act listed bird species**.

- 14) The approval holder must implement the most recent version of the Bird and Bat Adaptive Management Plan approved by the **NSW Planning Secretary**, to the extent that it applies to the protection of **protected matters** until the expiry of this approval.

Listed threatened birds

- 15) To mitigate mortality to **EPBC Act listed bird species** from turbine strike within the **development corridor**, the approval holder must ensure that the **operation** of wind turbines is managed, monitored and limited by the BBAMP such that impacts to **EPBC Act listed bird species** are detected, quantified, reported and mitigated.
- 16) The BBAMP must include, but is not limited to:
- a) details of the monitoring that will be implemented to ensure that any death or injury of **protected matters** is detected,
 - b) identification of **impact triggers** for the **Regent Honeyeater, Superb parrot, South-eastern Glossy Black-cockatoo** and **White-throated Needle-tail** and how these thresholds are determined, and
 - c) identification of proposed management and mitigation actions to be implemented if **impact triggers** identified in conditions 16b are reached.
- 17) The approval holder must notify the department within 5 **business days** of confirmation that **impact triggers** being reached.

GENERAL REPORTING

- 18) The approval holder must notify the **department**, in writing within 10 **business days** of the **detection** of any injury or mortality to **EPBC Act listed bird species** within the **Action area**.

ENVIRONMENTAL OFFSET REQUIREMENTS

- 19) The approval holder must comply with conditions B24 and B25 of the **NSW Approval** by **retiring** the numbers and types of biodiversity credits as set out in Table 1, Attachment A, to the extent they relate to **protected matters**.
- 20) The approval holder must comply with any future amended versions of the **NSW Approval** by **retiring** biodiversity credits to the extent they relate to **protected matters**.

Part B – Administrative conditions

SUBMISSION AND PUBLICATION OF PLANS

- 21) Wherever these conditions require the approval holder to submit any **plan** to the **department**, all such **plans** must be submitted to the **department** electronically.
- 22) Unless otherwise agreed to in writing by the **Minister**, the approval holder must publish each **plan** on the **website** within 15 **business days** of the date the **plan** is approved by the **NSW Planning Secretary** as required under **NSW Approval** conditions which must be complied with in accordance with these **EPBC Act** conditions.
- 23) The approval holder must keep all **plans** published on the **website**, in a format that is easily accessible and downloadable, from the first date which that **plan** must be published and until the expiry date of this approval. This requirement applies to all current and superseded versions of **plans**.
- 24) The approval holder is required to exclude or redact **sensitive biodiversity data** from any version of a **plan** before that **plan** is published on the **website** or otherwise provided to a member of the public.

MODIFICATIONS TO STATE OR TERRITORY APPROVAL

- 25) The approval holder must notify the **department** in writing of any change to the **NSW Approval** conditions that may relate to **protected matters**, within 10 **business days** of such a change to conditions coming into effect. Such notification must include a copy of the changed **NSW Approval** conditions showing what changes have been made.

COMMENCEMENT OF THE ACTION

- 26) The approval holder must notify the **department** electronically of the date of **commencement of the Action**, within 5 **business days** following **commencement of the Action**.
- 27) The approval holder must not **commence the Action** later than 5 years after the date of this approval decision.

COMPLIANCE RECORDS

- 28) The approval holder must maintain accurate and complete **compliance records** and document the procedure for recording and storing **compliance records**.
- 29) If the **department** makes a request in writing, the approval holder must provide electronic copies of **compliance records** to the **department** within the timeframe specified in the request.

Note: Compliance records may be subject to audit by the **department**, or by an **independent auditor** in accordance with section 458 of the **EPBC Act**, and/or be used to verify compliance with the conditions. Summaries of the results of an audit may be published on the **department's** website or through the general media.

- 30) The approval holder must ensure that any **monitoring data**, surveys, maps, and other spatial and metadata required under the conditions of this approval are prepared in accordance with the *Guidelines for biological survey and mapped data*, Commonwealth of Australia 2018, or as otherwise specified by the **Minister** in writing.

- 31) The approval holder must ensure that any **monitoring data**, surveys, maps, and other spatial and metadata required under the conditions of this approval are prepared in accordance with the *Guide to providing maps and boundary data for EPBC Act projects*, Commonwealth of Australia 2021, or as otherwise specified by the **Minister** in writing.
- 32) The approval holder must submit all **monitoring data**, surveys, maps, other spatial and metadata and all species occurrence record data (sightings and evidence of presence) electronically to the **department** within 20 **business days** of each anniversary of the date of this approval decision except where otherwise specified in a **plan**.

ANNUAL COMPLIANCE REPORTING

- 33) The approval holder must prepare a **compliance report** for each **Annual Compliance Report period (ACR period)** and at time of notification of completion of the action.
- 34) The approval holder must ensure each **compliance report** includes:
 - a) accurate and complete details of compliance and any non-compliance with:
 - i) each condition imposed under the **NSW Approval**, if a condition attached to this approval decision requires compliance with that **NSW Approval** condition,
 - ii) each condition attached to this approval decision, and
 - iii) all commitments made in each **plan**,
 - b) a schedule of all **plans** in effect in relation to these conditions during the **ACR period**,
 - c) accurate and complete details of how each **plan** was implemented during the **ACR period**, and
 - d) if any **incident** occurred, accurate and complete details of each **incident**.
- 35) The approval holder must ensure each **compliance report** is completed to the satisfaction of the **Minister** and is consistent with the *Annual Compliance Report Guidelines*, Commonwealth of Australia 2023.
- 36) The approval holder must, within 20 **business days** following the end of each **ACR period**, in a format that is easily accessible and downloadable, publish on the **website** each **compliance report**.
- 37) The approval holder must:
 - a) Exclude or redact **sensitive biodiversity data** from each **compliance report** and publish them on the **website** or otherwise provide them to a member of the public.
 - b) If **sensitive biodiversity data** is excluded or redacted from a version of a **compliance report** published or otherwise provided to a member of the public, submit the full **compliance report** to the **department** within 5 **business days** of its publication on the **website** and notify the **department** in writing what exclusions and redactions have been

made in the version published on the **website** or otherwise provided to a member of the public.

- 38) The approval holder must keep each **compliance report** published on the **website** from the first date which that **compliance report** must be published and until the expiry date of this approval.

Note: **Compliance reports** may be published on the **department's** website.

REPORTING NON-COMPLIANCE

- 39) The approval holder must notify the **department** electronically, within 1 **business day** of becoming aware of any **incident**. The approval holder must specify in each notification:
- a) any condition or commitment made in a **plan** which has not been, or may have not been, complied with,
 - b) a short description of the **incident**, and
 - c) the location (if applicable, including co-ordinates), date and time of the **incident**.
- 40) The approval holder must provide to the **department** in writing, within 7 **business days** of notification of an **incident**, the details of that **incident**. The approval holder must specify:
- a) all corrective measures and investigations which the approval holder has already taken in respect of the **incident**,
 - b) the potential impacts of the **incident**,
 - c) the method and timing of any corrective measures that the approval holder proposes to undertake to address the **incident**, and
 - d) any variation of these conditions or revision of a **plan** that will be required to prevent recurrence of the **incident** and/or to address its consequences.

INDEPENDENT AUDIT

- 41) The approval holder must ensure that an **independent audit** of compliance with the conditions is conducted for every **audit period**.
- 42) The approval holder must ensure the scope of each **independent audit** is sufficient to determine the compliance status for each condition of approval, and each commitment made in each **plan**.
- 43) The approval holder must ensure the criteria for each **independent audit** and the undertaking of each **independent audit** are consistent with the **Independent Audit and Audit Report Guidelines**.
- 44) The approval holder must submit an **audit report** to the **department** for written agreement from the **department** within 3 months following the end of each **audit period**, or as otherwise directed by the **Minister** in writing.

- 45) The approval holder must ensure each **audit report** is completed to the satisfaction of the **Minister** and is consistent with the **Independent Audit and Audit Report Guidelines**.
- 46) The approval holder must publish each **audit report** on the **website**, in a format that is easily accessible and downloadable, within 10 **business days** of the date the **department** agrees to that **audit report** in writing.
- 47) The approval holder must notify the **department** within 5 **business days** of the date the **audit report** is published on the **website**. In this notification, the approval holder must provide the **department** with the web address for where the **audit report** is published on the **website**.
- 48) The approval holder must keep each **audit report** published on the **website** from the first date which that **audit report** must be published and until the expiry date of this approval.

COMPLETION OF THE ACTION

- 49) Within 20 **business days** after the **completion of the Action**, and, in any event, at least 20 **business days** before this approval expires, the approval holder must notify the **department** electronically of the date of **completion of the Action** and provide **completion data**. The approval holder must submit any spatial data that comprises **completion data** as a **shapefile**.
- 50) The approval holder must notify the **department** electronically 60 **business days** prior to the expiry date of this approval, that the approval is due to expire.

Note: Section 145C of the **EPBC Act** entitles the approval holder to request an extension to the period of effect of this approval.

Part C – Definitions

Words and terms appearing in **bold** (excluding headings) have the meaning assigned to them in the list below:

Action area means the location of the Action, represented in Attachment B by the zone enclosed by the red line designated 'Project Area'.

Annual Compliance Report period or **ACR period** means each subsequent 12-month period following the date of this approval decision until the expiry date of this approval, unless otherwise specified in writing by the **Minister**.

Audit period means each subsequent three year period following the **commencement of the Action** until the expiry date of this approval unless otherwise specified in writing by the **Minister**.

Audit report means a written report of an **independent audit**.

Box Gum Grassy Woodland and Derived Native Grassland means the **EPBC Act listed threatened ecological community** White Box-Yellow Box-Blakely's Red Gum Grassy Woodland and Derived Native Grassland. Within the **Action area**, the extent of **Box-Gum Grassy Woodland**

identified at the time of this approval is represented in Attachment C1 by the brown shaded areas within the development corridor, Commonwealth Box Gum Woodland CEEC (EPBC Act).

Biodiversity credits means biodiversity credit units issued in accordance with the Biodiversity Offsets Scheme established under the *Biodiversity Conservation Act 2016* (NSW).

Biodiversity data means ‘biodiversity data’ as described in the *Policy on Accessing and Sharing Biodiversity Data*, Commonwealth of Australia 2024.

Business day means a day that is not a Saturday, a Sunday, or a public holiday in NSW.

Clear, cleared or clearing means the cutting down, felling, thinning, logging, removing, killing, destroying, poisoning, ringbarking, uprooting, or burning of vegetation.

Commence the Action or commences the Action means the first instance of any on-site **clearing, construction** or other physical activity associated with the Action, but does not include minor physical disturbance necessary to:

- Undertake pre-clearance surveys or monitoring programs.
- **Pre-construction minor works.**
- Protect environmental and property assets from fire, weeds, and feral animals, including use of existing surface access tracks.
- Install temporary site facilities for persons undertaking pre-commencement activities so long as these facilities are located where they do not **harm any protected matter.**
- Undertake **early works.**

Commencement of the Action means the date on which the approval holder **commences the Action.**

Commissioning means activities associated with the testing of a wind turbine after the turbine blades start rotating for the purpose of demonstrating turbine performance in accordance with design requirements.

Completion data means an environmental report and spatial data clearly detailing how the conditions of this approval have been met.

Completion of the Action means the date on which all activities associated with the approved Action have permanently ceased and/or been completed.

Compliance records means all documentation or other material in whatever form required to demonstrate compliance with these conditions of approval (including compliance with commitments made in **plans**) in the approval holder’s possession, or that are within the approval holder’s power to obtain lawfully.

Compliance report means a written report of compliance with, and fulfilment of, these conditions (including compliance with commitments made in **plans**).

Construct or Construction means:

- the erection of a building or structure that is, or is to be, fixed to the ground and wholly or partially fabricated on-site,
- the alteration, maintenance, repair or demolition of any building or structure,
- any work which involves breaking of the ground (including pile driving) or bulk earthworks,
- the laying of pipes and other prefabricated materials in the ground, and
- any associated excavation work.

Construction/construct does not include **early works** or **pre-construction minor works**.

Days means any day of the week including Saturday and Sunday, and public holidays.

Department means the Australian Government agency responsible for administering the **EPBC Act**.

Detection means the confirmed identification of any injury or mortality to **EPBC Act listed bird species**.

Development corridor means the area in which the approval holder will locate the wind turbine generators, access roads and associated infrastructure, represented in Attachment B1 by the grey shaded area, within the proposed action area (red polygon).

Early works means all geotechnical investigations in the **development corridor** and includes any:

- drilling
- drill spoil stockpiling
- ground compaction
- access undertaken to enable geotechnical investigations necessary to determine final site layout so long as it does not harm any protected matter.

EPBC Act means the *Environment Protection and Biodiversity Conservation Act 1999* (Cth).

EPBC Act listed bird species means birds that are **EPBC Act listed threatened species** for which this approval has effect, specifically the **Regent Honeyeater, Superb Parrot, South-eastern Glossy Black-cockatoo** and the **White-throated Needletail**.

EPBC Act listed threatened species means the threatened flora and fauna species listed under the **EPBC Act**.

Grey Box Grassy Woodlands and Derived Native Grasslands means the **EPBC Act** listed threatened ecological community **Grey Box Grassy Woodlands and Derived Native Grasslands of South-eastern Australia**. Within the **Action area**, the location of **Grey Box Grassy Woodlands**

and Derived Native Grasslands of South-eastern Australia as identified at the time of this approval is represented in Attachment C4 to C6 by the brown shaded areas designated ‘**Grey Box Grassy Woodlands and Derived Native Grasslands of South-eastern**’.

Harm means to cause any measurable direct or indirect disturbance or deleterious change as a result of any activity associated with the Action.

Impact Trigger/s means a specified level identified for each **EPBC Act listed bird species** in the Bird and Bat Adaptive Management Plan, that when reached, initiates a trigger to implement specific actions. This trigger should include the estimated total number of birds for each EPBC listed bird species impacted over a 12-month and three year period.

Incident means any:

- event which has the potential to, or does, **harm any protected matter**, other than as authorised by this approval.

Independent audit means an audit, conducted by an **independent auditor**, of compliance with and fulfilment of these conditions and the commitments made in **plans**, objectively evaluated against the audit criteria developed by the **independent auditor**, in accordance with the **Independent Audit and Audit Report Guidelines**.

Independent Audit and Audit Report Guidelines means the *Environment Protection and Biodiversity Conservation Act 1999 Independent Audit and Audit Report Guidelines*, Commonwealth of Australia 2019

Independent auditor means a person, or firm, who:

- does not have any individual, financial*, employment* or family affiliation or any conflicting interests with the Action, the approval holder or the approval holder’s staff, representatives, or associated persons,
- has demonstrated experience in undertaking government-regulated environmental compliance audits, and
- holds relevant professional qualifications and accreditations.

*Other than for the purpose of undertaking the role for which an independent person, or firm, is required.

Minister means the Australian Government Minister administering the **EPBC Act**, including any delegate thereof.

Monitoring data means the data required to be recorded under the conditions of this approval, including **sensitive biodiversity data**.

Nesting Activity means evidence of **south-eastern glossy black-cockatoo** tending to hollows, including but not limited to, birds observed entering or leaving hollows, birds in hollows, evidence of chipping at hollow entrances, observations of birds moving decayed debris, **detection** of calling of adult or chicks from within hollows or near the entrance of hollows.

Suitable hollow bearing trees for the south-eastern glossy black-cockatoo are defined as a living or dead tree with hollows greater than 15cm diameter and higher than 8m above ground.

NSW Approval means the Independent Planning Commission of NSW's Statement of Reasons and Development Consent, 31 October 2024, or as modified. On the date of approval decisions, all documents for the Spicers Creek Wind Farm are published on the NSW Major Projects website at [Spicers Creek Wind Farm | Planning Portal - Department of Planning and Environment](#). The **NSW Approval** conditions referred to in this notice are the conditions in the Development Consent.

NSW Planning Secretary means the **Planning Secretary** as defined in the **NSW Approval**.

Operation means all activities associated with the use of a wind turbine to produce electricity for commercial purposes, after the **commissioning** of that wind turbine has been completed.

PCT means plant type community (PCT), the finest classification in the NSW DCCEEW native vegetation classification framework, in accordance with the NSW DCCEEW BioNet Vegetation Classification database. At the date of this decision, the BioNet Vegetation Classification database can be accessed via the following webpage address:

<https://vegetation.bionet.nsw.gov.au/LoginPR.aspx?ReturnUrl=%2f>.

Plan/s means any action management plan or strategy that the approval holder is required by these conditions to implement.

Preconstruction minor works means works including the installation of temporary fences or signage and installation of permanent or temporary meteorological masts within the **action area** so long as these actions are located where there is no **harm** to any **protected matter**.

Protected matter means a matter protected under a controlling provision in Part 3 of the **EPBC Act** for which this approval has effect.

Regent Honeyeater means the **EPBC Act** listed species **Regent Honeyeater** (*Anthochaera phrygia*).

Regent Honeyeater habitat means any area of habitat, which supports foraging for the **Regent Honeyeater**, including **PCTs** 81, PCT 266, PCT 267, PCT 272, PCT 281, and PCT 468 (specifically condition classes Moderate Good, Thinned, Shrubby and Planted), represented by the brown shaded area in [Attachment C7](#) to [C9](#).

Retire, retired or retiring means the retirement of **biodiversity credits** in accordance with the Biodiversity Offset Scheme established under the *Biodiversity Conservation Act 2016* (NSW).

Sensitive biodiversity data means **biodiversity data** which, if released, published or otherwise exposed, may result in **harm** to the relevant **protected matter** as a result of the intentional or unintentional misuse of that **biodiversity data**.

Shapefile means location and attribute information about the Action provided in an Esri shapefile format containing:

- '.shp', '.shx', '.dbf' files,
- a '.prj' file which specifies the projection or geographic coordinate system used, and
- an '.xml' metadata file that describes the shapefile for discovery and identification purposes.

South-eastern Glossy Black-cockatoo means the **EPBC Act** listed threatened species **South-eastern Glossy Black-cockatoo** (*Calyptorhynchus lathami lathami*).

South-eastern Glossy Black-cockatoo breeding season means the months of March, April, May, June, July and August, beginning the 1 March each year and ending 31 August each year.

South-eastern Glossy Black-cockatoo habitat means any area of habitat, which supports foraging and/or breeding habitat for the **South-eastern Glossy Black-cockatoo**, including PCT 81, PCT 266 and PCT 468 (specifically condition classes Moderate, Good, Thinned Canopy and Planted), represented by the brown shaded areas in Attachment C13.

Suitably qualified ecologist for the purpose of undertaking environmental surveys means a person who has relevant professional qualifications and experience designing and implementing surveys, including targeted surveys for hollow nesting birds in south eastern Australia and can give an authoritative assessment and advice on the presence of **South-eastern Glossy Black-cockatoo nesting activity** using relevant protocols, standards, methods and/or literature.

Superb Parrot means the **EPBC Act** listed threatened species (*Polytelis swainsonii*).

Superb Parrot habitat means any area of habitat, which supports foraging for the **Superb Parrot**, including PCT 81, PCT 266, PCT 272 and PCT 281, represented by the brown shaded areas in Attachment C10 to C12.

Targeted surveys means surveys within **South-eastern Glossy Black-cockatoo habitat** to detect evidence of **South-eastern Glossy Black-cockatoo nesting activity**. Surveys should be undertaken between March and August of *Eucalyptus* trees (dead or living) as bearing hollows greater than 15 cm diameter and higher than 8 m above ground.

Website means a set of related web pages located under a single domain name attributed to the approval holder and available to the public.

White-throated Needle-tail means the **EPBC Act** listed threatened species the **White-throated Needle-tail** (*Hirundapus caudacutus*).

White-throated Needle-tail habitat means areas of vegetation which support the **White-throated Needle-tail**, including PCTs 81, PCT 266, PCT 267, PCT 272, PCT 281, PCT 467 and PCT 468. (specifically, condition classes Moderate, Good and Planted). The location of **White-throated Needle-tail habitat** identified at the time of this approval is represented by the brown shaded areas in Attachment C14.

Attachments

- A: Impact area and offset liability
- B: Map of the project area and development corridor
- C: Maps of communities and species habitat area within the development corridor

Attachment A:**Table 1:** Impact area and offset liability

EPBC Act listed threatened species and ecological communities	Impact area (ha)	Credit liability
White Box-Yellow Box-Blakely's Red Gum Grassy Woodland and Derived Native Grassland	53.8 ha	2,344 ecosystem credits
Grey Box Grassy Woodlands and Derived Native Grasslands of South-eastern Australia	31.2 ha	903 ecosystem credits
Regent Honeyeater	98.1 ha	4,062 ecosystem credits
Superb Parrot	40.7 ha	1,650 ecosystem credits
South-eastern Glossy Black-Cockatoo	15.1 ha	649 species credits
White-throated Needletail	130.2 ha	5,023 ecosystem credits



Attachment B

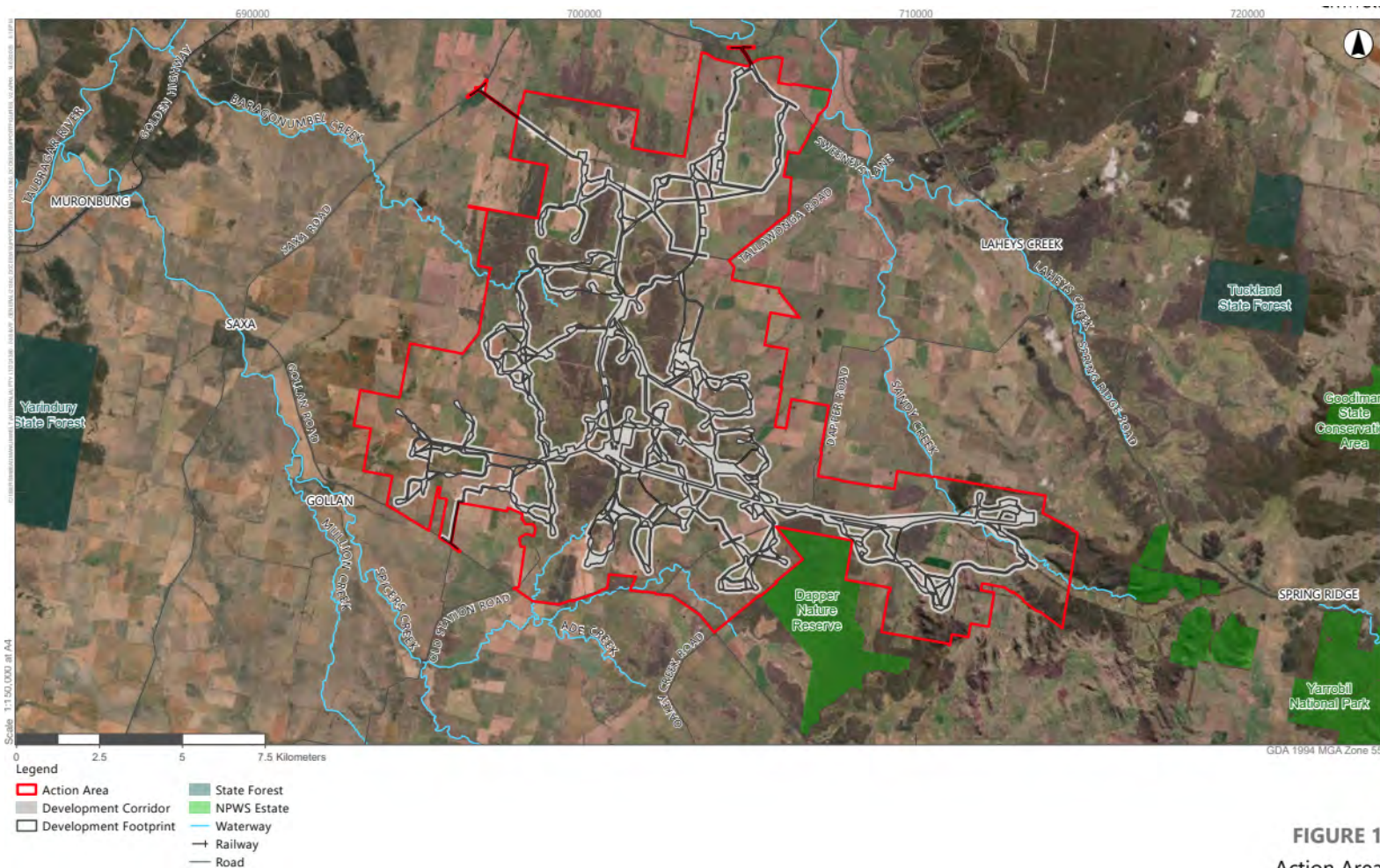


FIGURE 1
Action Area

Attachment B1: Action area (red polygon), development corridor (grey shading) and development footprint (black polygon).

Attachment C

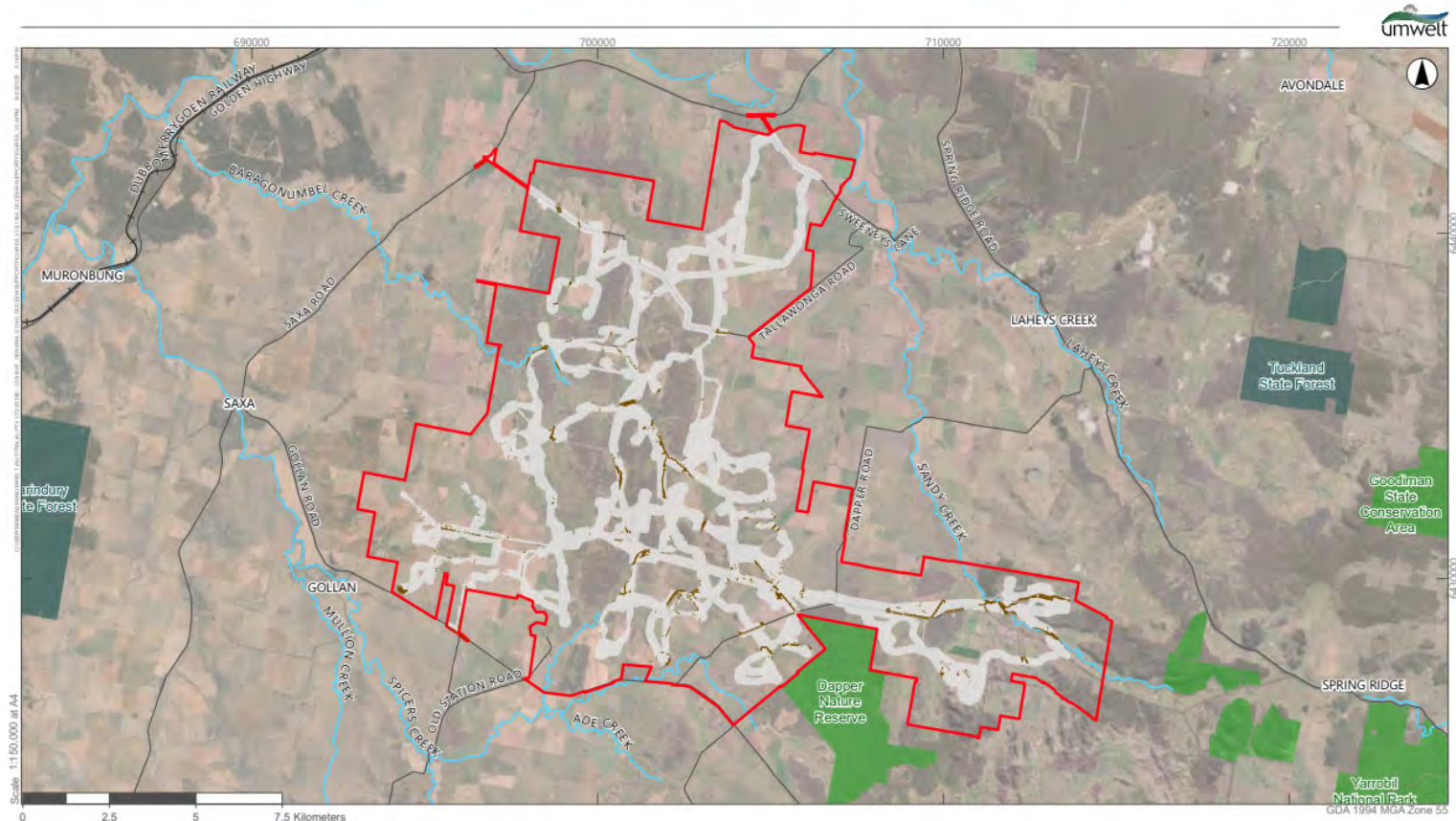


FIGURE 2

White Box-Yellow Box-Blakely's Red Gum Woodland and Derived Native Grassland Extent

Image Source: ESRI Basemap Data source: NSW DFSI (2022), CWP Renewables (2023)

Attachment C1: Action area showing Box Gum Grassy Woodland and DNG within development corridor (brown areas) of the action area.

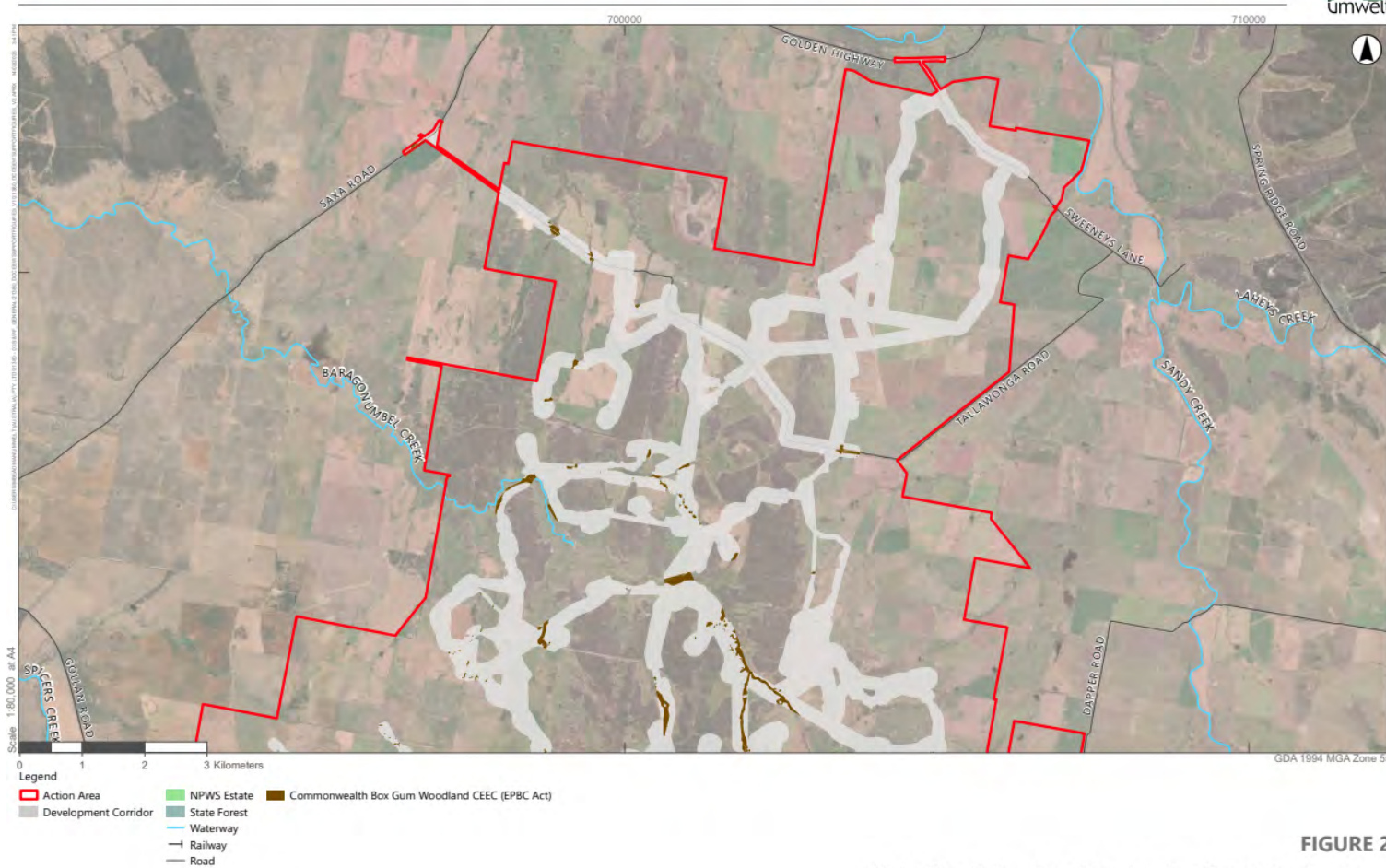


FIGURE 2
White Box-Yellow Box-Blakely's Red Gum Woodland and
Derived Native Grassland Extent

Image Source: ESRI Basemap Data source: NSW DFSI (2022), CWP Renewables (2023)

Attachment C2: Action area showing Box Gum Grassy Woodland and DNG within development corridor (brown areas), within the north of the action area.

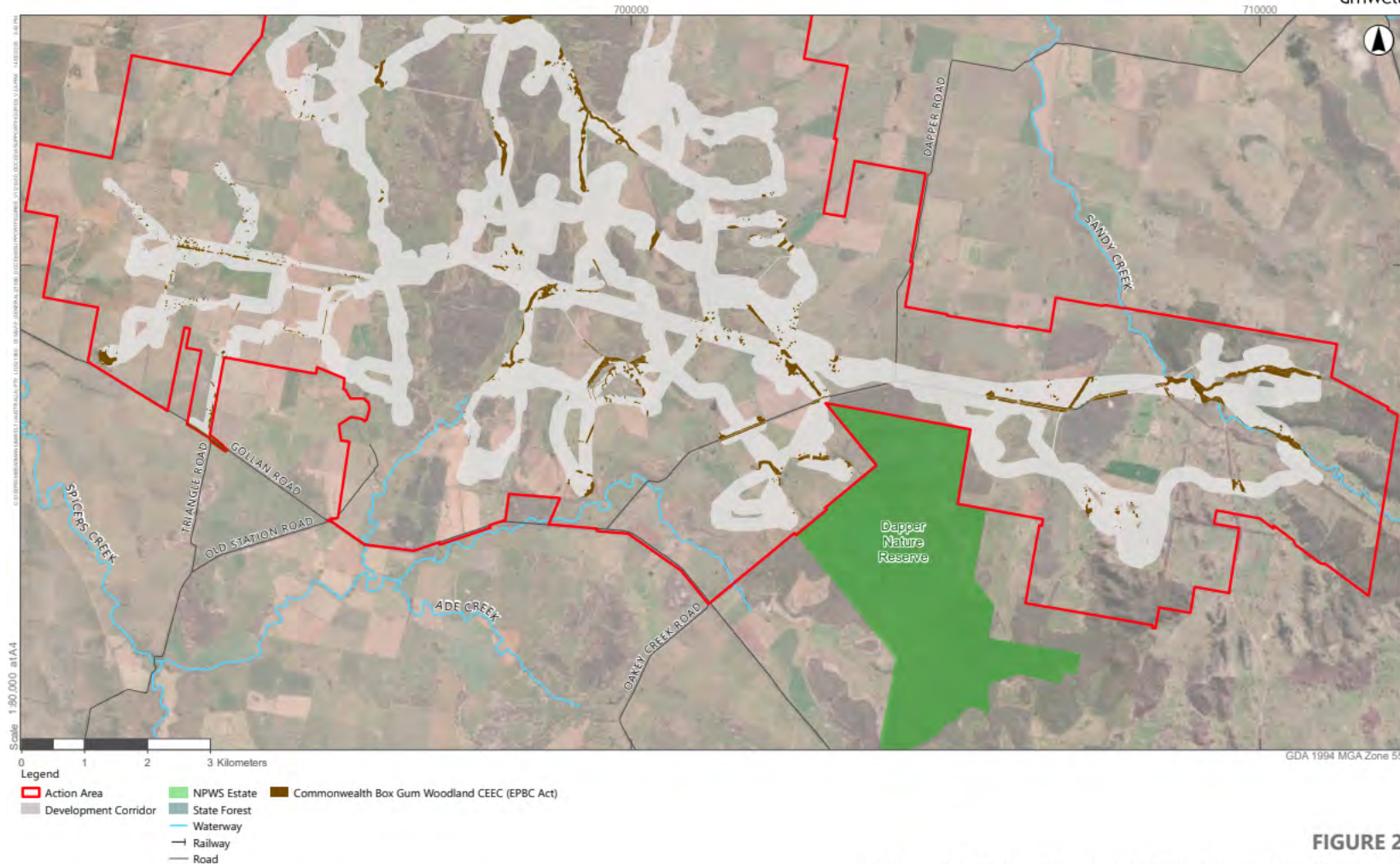


FIGURE 2

White Box-Yellow Box-Blakely's Red Gum Woodland and Derived Native Grassland Extent

Image Source: ESRI Basemap Data source: NSW DFSI (2022), CWP Renewables (2023)

Attachment C3: Action area showing Box Gum Grassy Woodland and DNG within development corridor (brown areas), in the south of the action area.

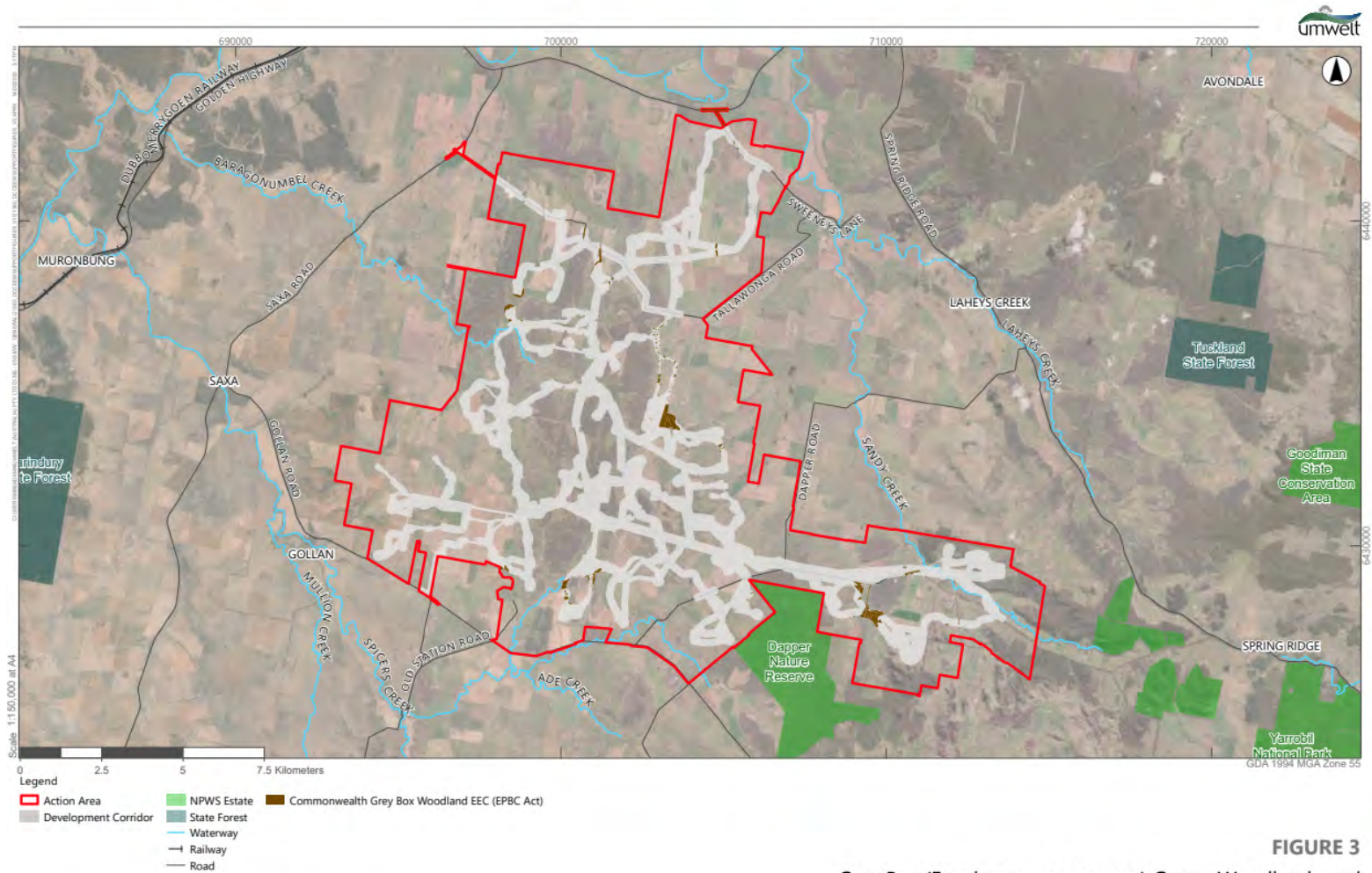


FIGURE 3

Grey Box (*Eucalyptus macrocarpa*) Grassy Woodlands and Derived Native Grasslands of South-Eastern Australia Extent

Image Source: ESRI Basemap Data source: NSW DFSI (2022), CWP Renewables (2023)

Attachment C4: Action area showing Grey Box Grassy Woodlands and DNG within development corridor (brown areas) of the action area.

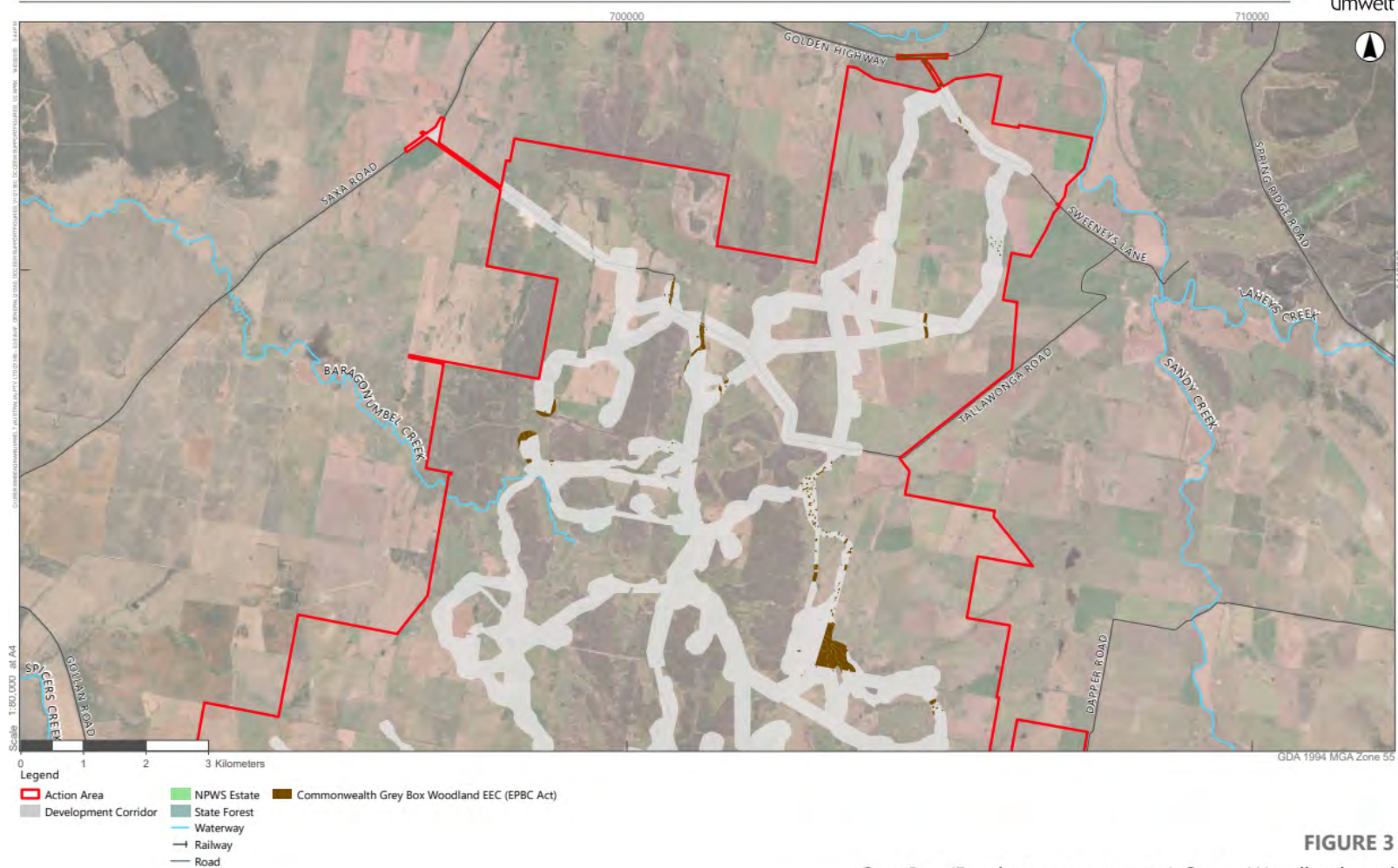


FIGURE 3

Grey Box (*Eucalyptus macrocarpa*) Grassy Woodlands and Derived Native Grasslands of South-Eastern Australia Extent

Image Source: ESRI Basemap Data source: NSW DFSI (2022), CWP Renewables (2023)

Attachment C5: Action area showing Grey Box Grassy Woodlands and DNG within development corridor (brown areas), within the north of the action area.

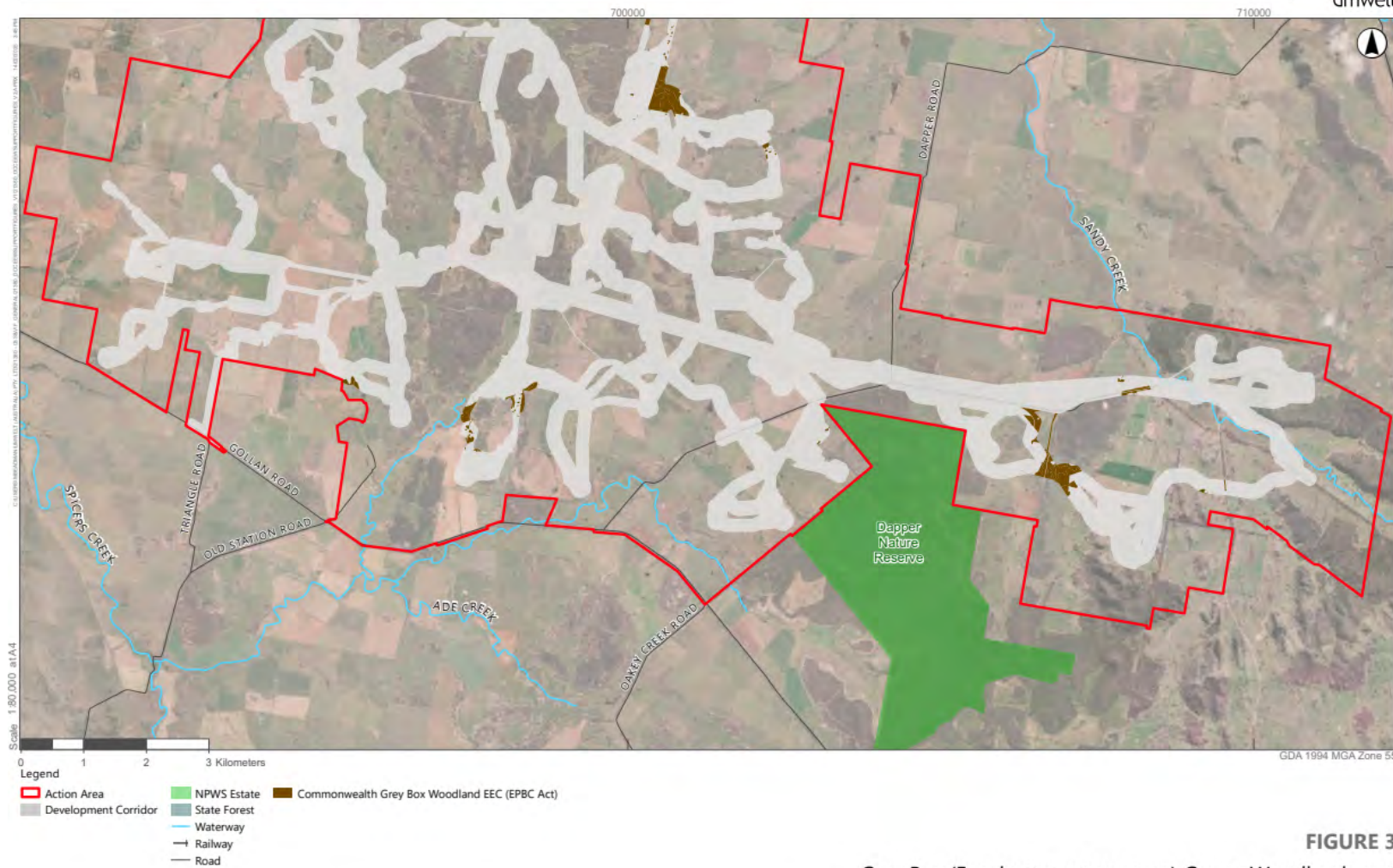


FIGURE 3

Grey Box (*Eucalyptus macrocarpa*) Grassy Woodlands and Derived Native Grasslands of South-Eastern Australia Extent

Image Source: ESRI Basemap Data source: NSW DFSI (2022), CWP Renewables (2023)

Attachment C6: Action area showing Grey Box Grassy Woodlands and DNG within development corridor (brown areas), within the south of the action area.

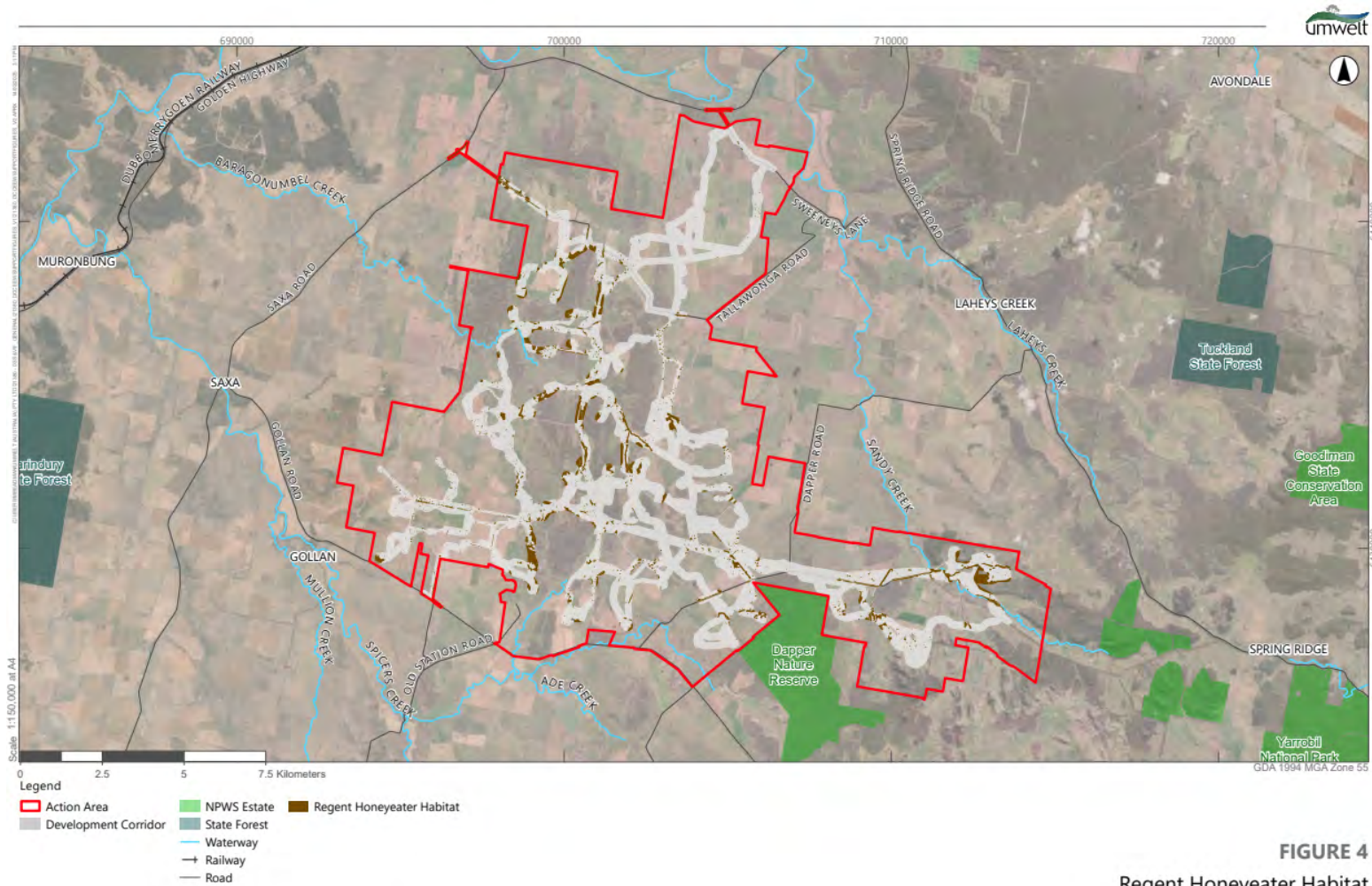


Image Source: ESRI Basemap Data source: NSW DFSI (2022), CWP Renewables (2023)

Attachment C7: Action area showing Regent Honeyeater habitat within development corridor (brown areas), in the action area.

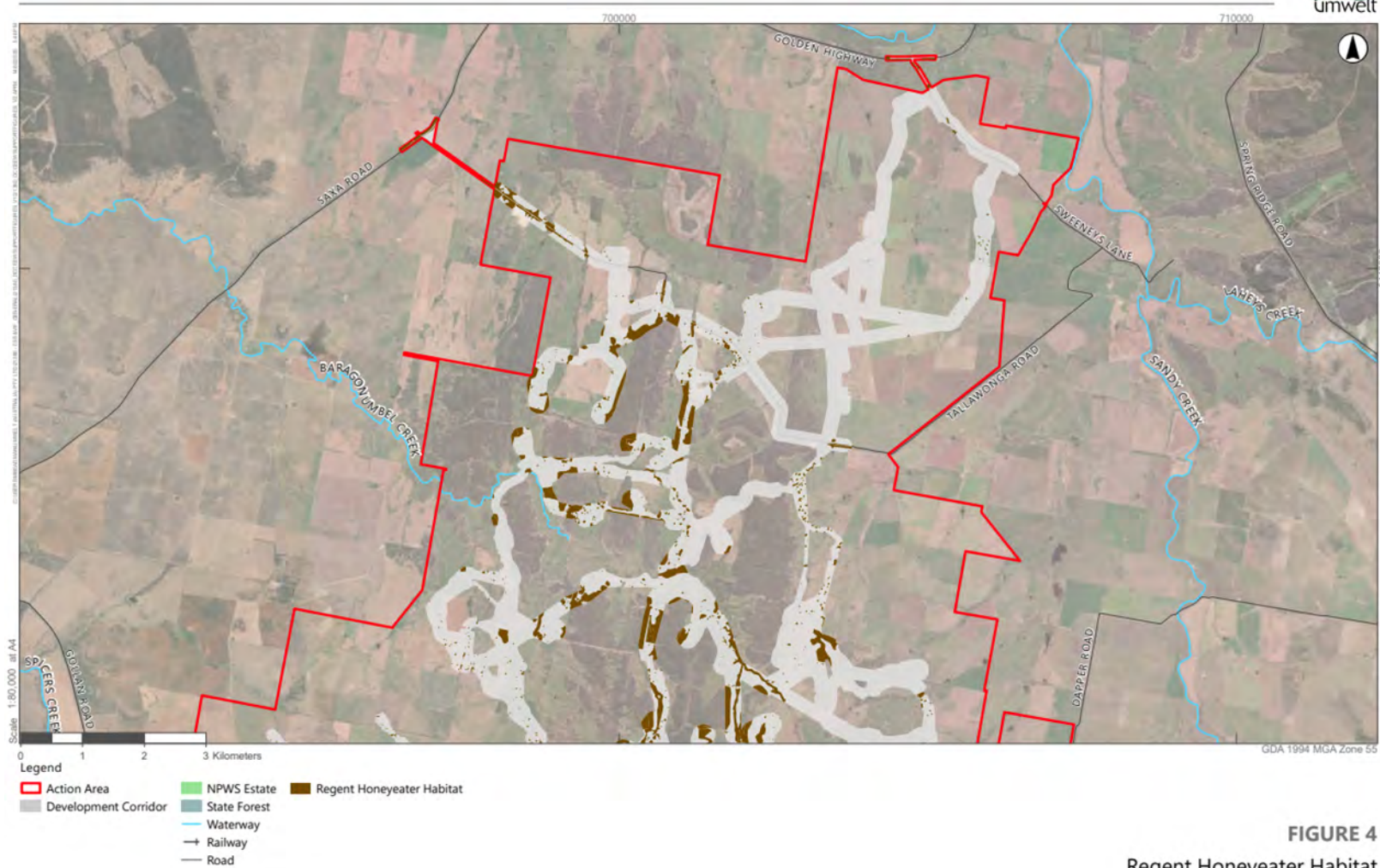


FIGURE 4
Regent Honeyeater Habitat

Attachment C8: Action area showing Regent Honeyeater habitat within development corridor (brown areas), in the north of the action area.

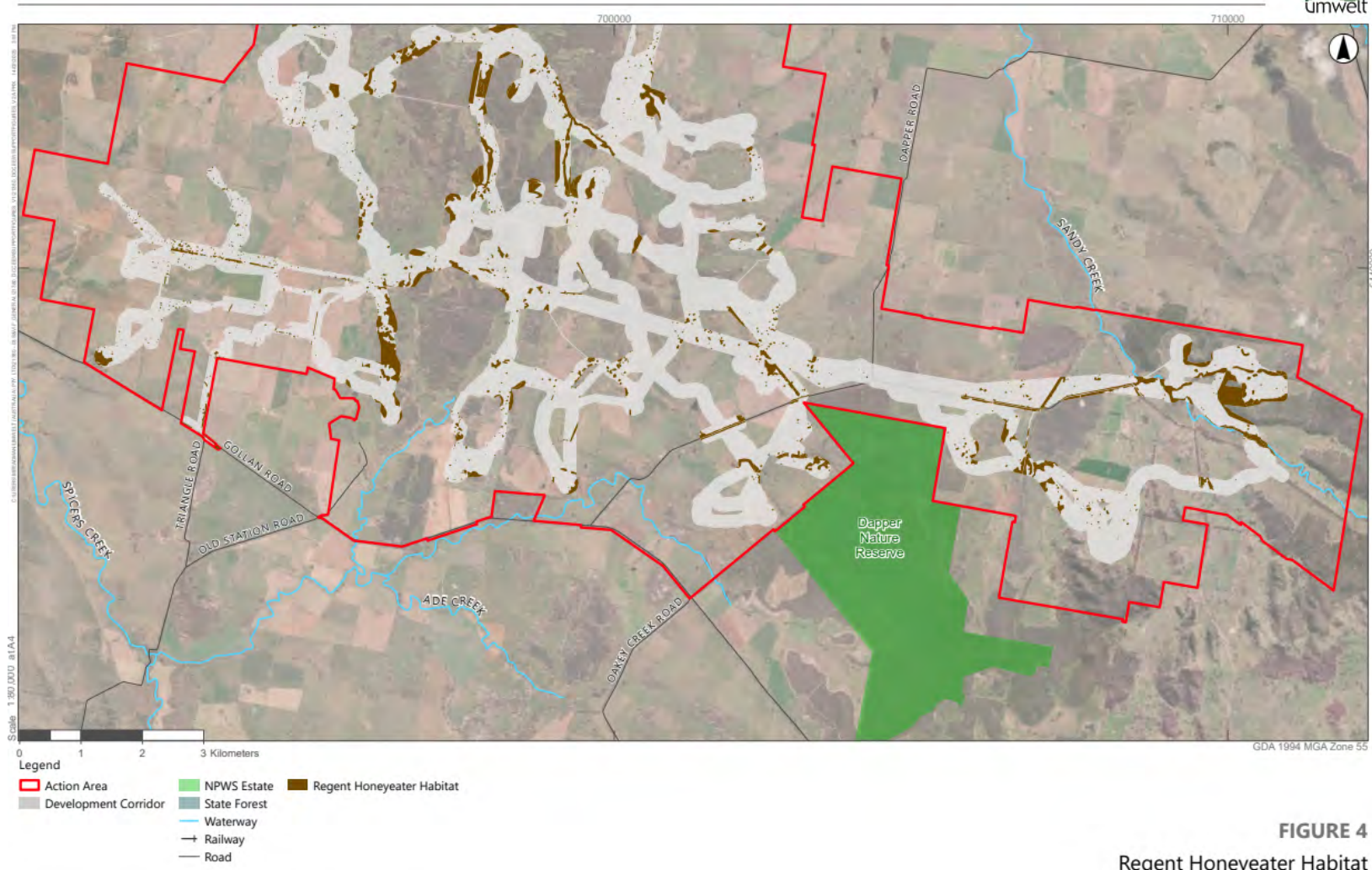


FIGURE 4
Regent Honeyeater Habitat

Image Source: ESRI Basemap Data source: NSW DFSI (2022), CWP Renewables (2023)

Attachment C9: Action area showing Regent Honeyeater habitat within development corridor (brown areas), in the south of the action area.

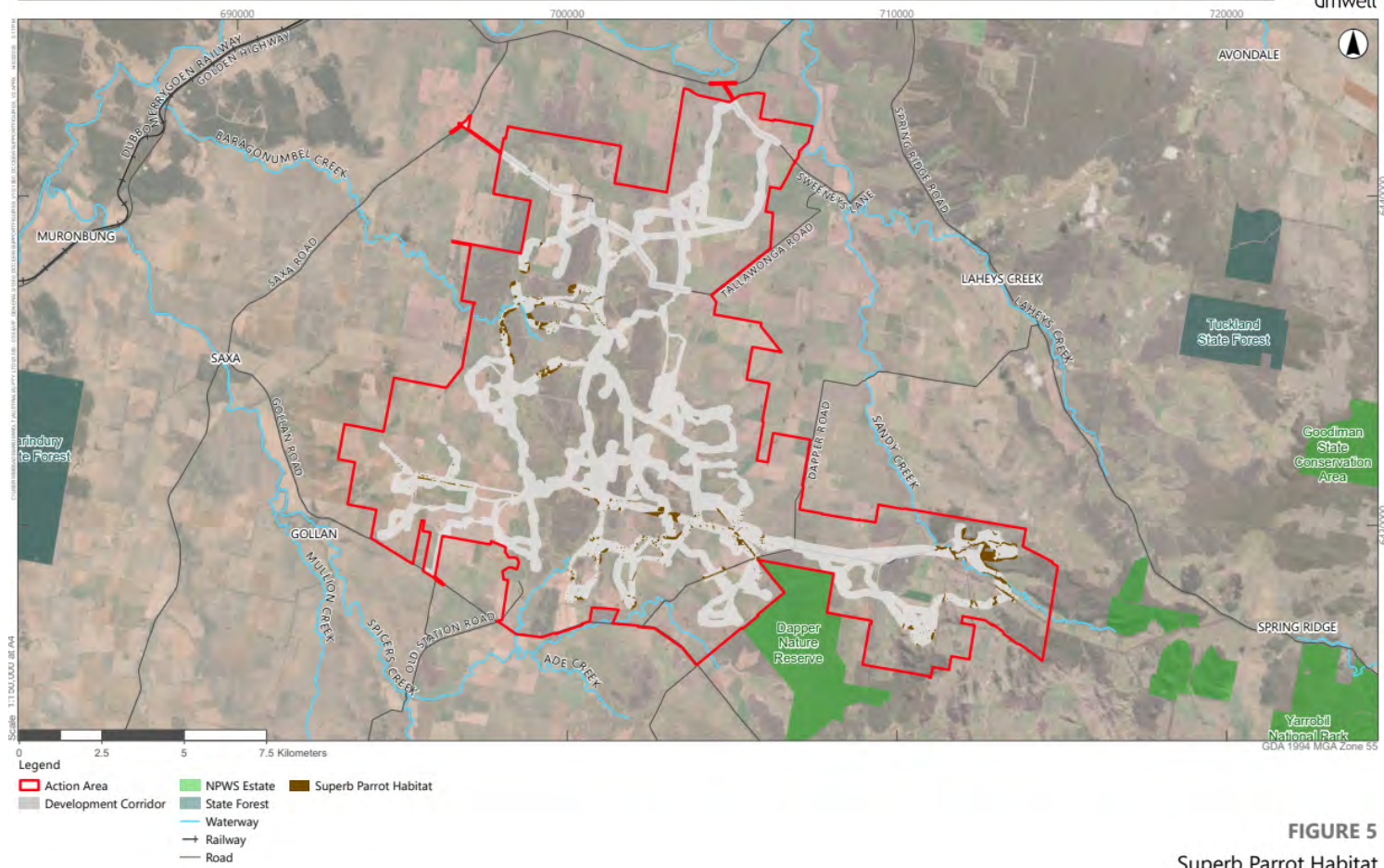


FIGURE 5
Superb Parrot Habitat

Image Source: ESRI Basemap Data source: NSW DFSI (2022), CWP Renewables (2023)

Attachment C10: Action area showing Superb Parrot habitat within the development corridor (brown areas), in the action area.

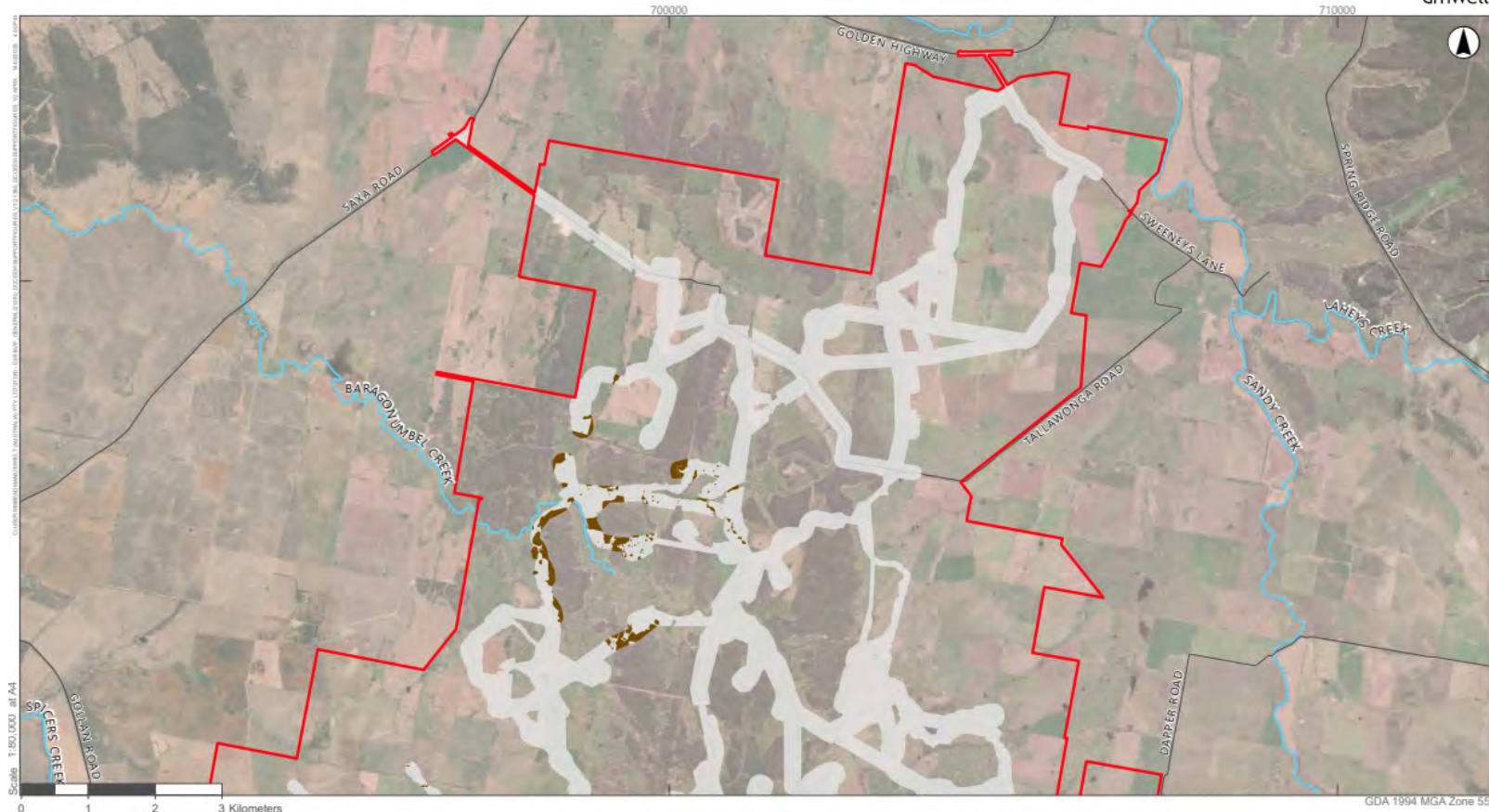


FIGURE 5
Superb Parrot Habitat

Image Source: FSRI Basemap Data source: NSW DFSI (2022), CWP Renewables (2023)

Attachment C11: Action area showing Superb Parrot habitat within the development corridor (brown areas), in the north of the action area.

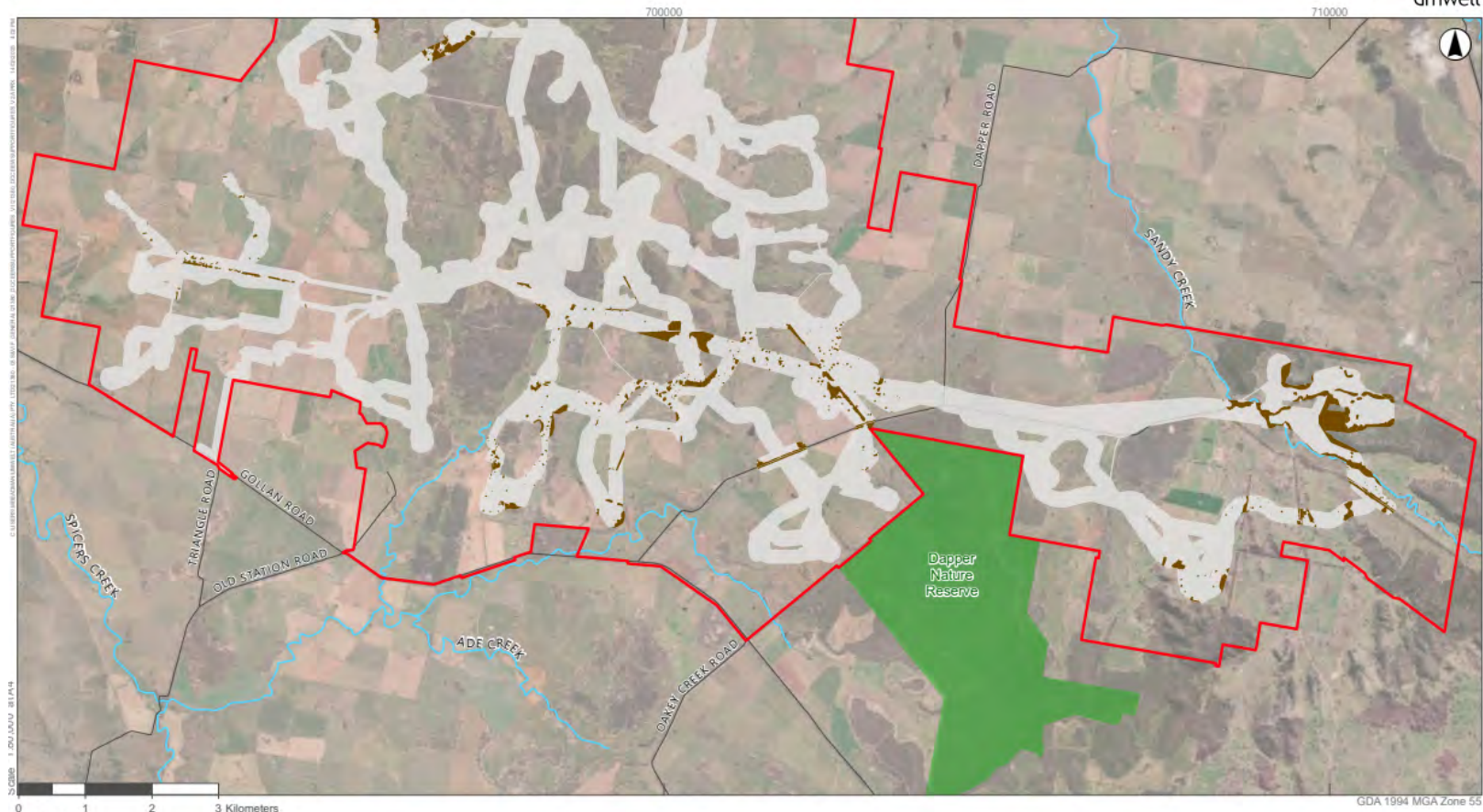


FIGURE 5
Superb Parrot Habitat

Image Source: ESRI Basemap Data source: NSW DFSI (2022), CWP Renewables (2023)

Attachment C12: Action area showing Superb Parrot habitat within the development corridor (brown areas), in the south of the action area.



FIGURE 6

South-Eastern Glossy Black-Cockatoo Habitat

Image Source: ESRI Basemap Data source: NSW DFSI (2022), CWP Renewables (2023)

Attachment C13: Action area showing South-eastern Glossy Black Cockatoo habitat within the development corridor (brown areas).

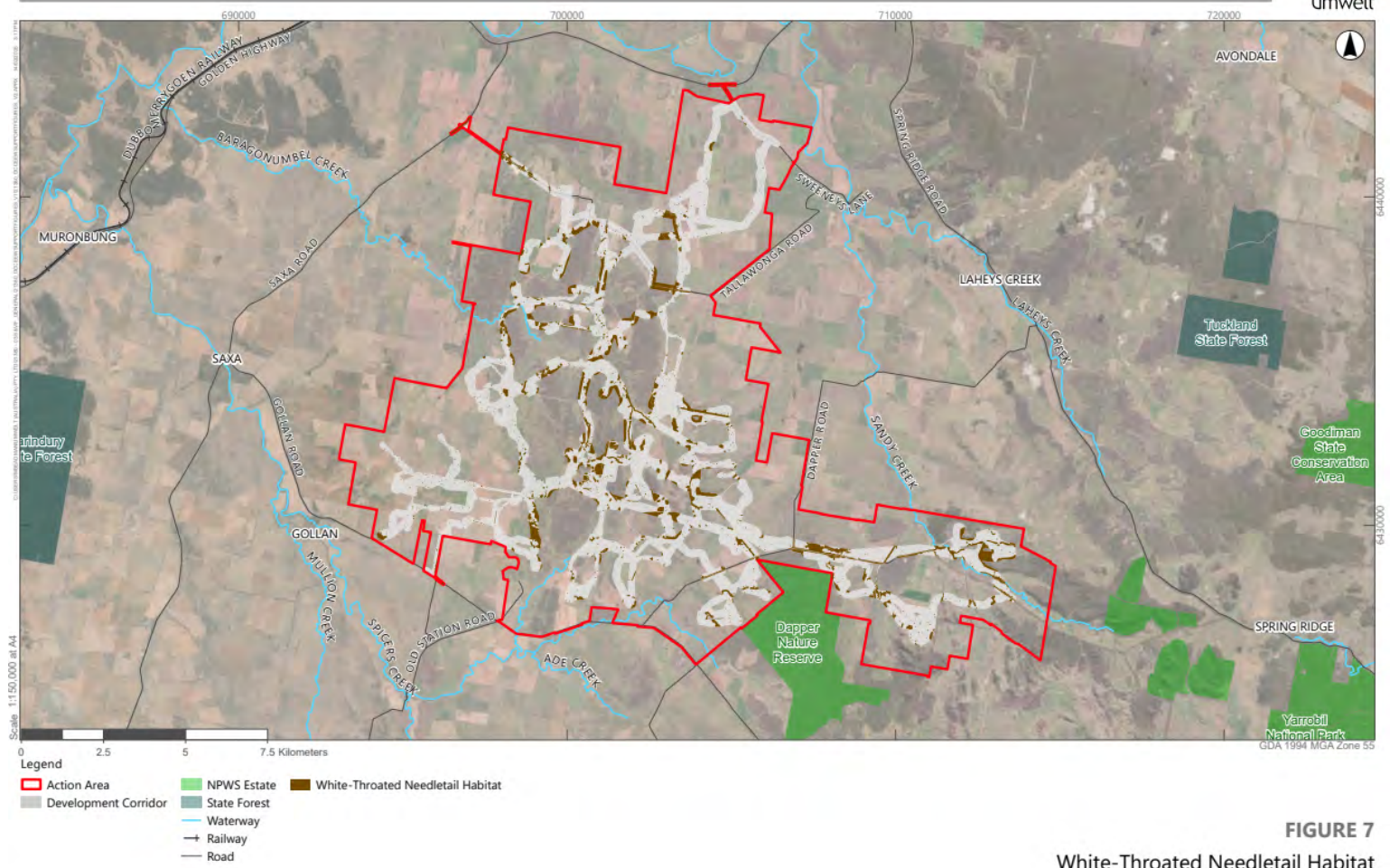


FIGURE 7

White-Throated Needletail Habitat

Image Source: ESRI Basemap Data source: NSW DFSI (2022), CWP Renewables (2023)

Attachment C14: Action area showing White-throated Needletail habitat within the development corridor (brown shaded areas).