



Uungula Wind Farm

Community Consultative Committee Presentation 15th February 2019



Uungula Wind Farm

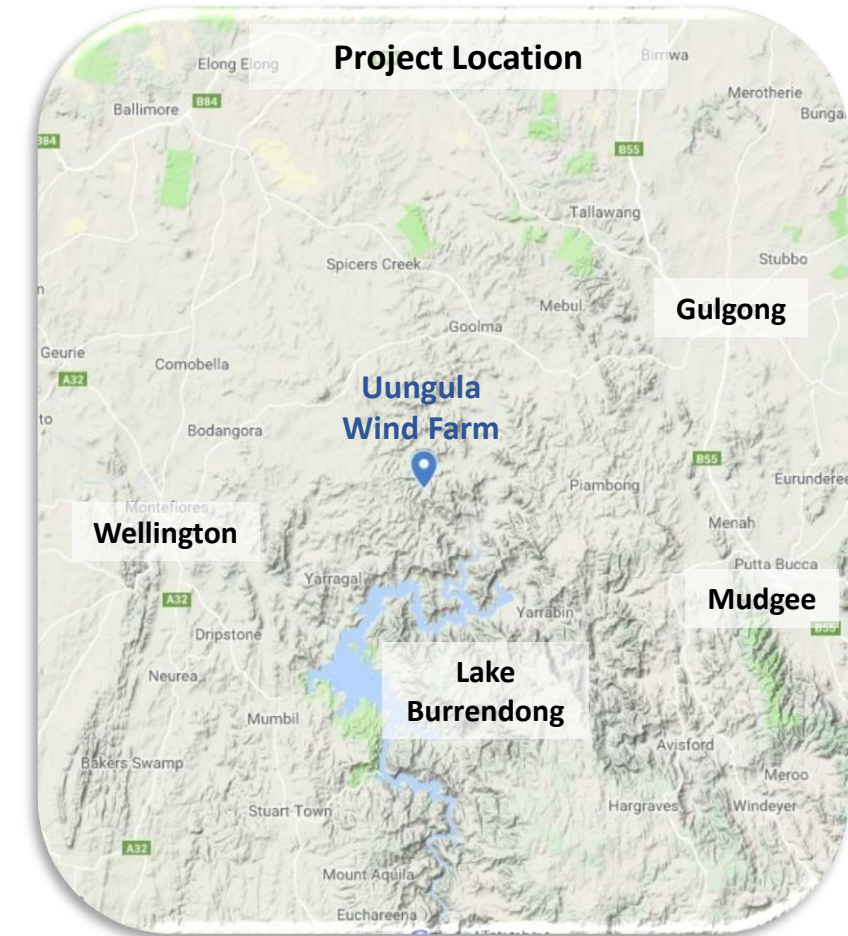


*Delivering Energy, Powering
Communities*

www.cwprenewables.com

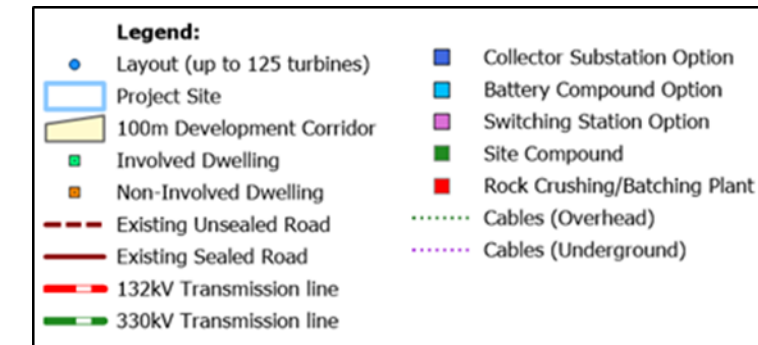
Uungula Wind Farm is proposed between Wuuluman and Twelve Mile, north of Lake Burrendong approximately 14 east of Wellington, NSW.

- **Generating capacity of approximately 400 MW.**
- **Up to 125 wind turbine generators (WTGs).**
- **Ancillary infrastructure:** site offices, internal roads, hardstands, underground and overhead cabling, monitoring masts, substation, a battery and a switching station.
- **Temporary facilities:** site compounds, laydown areas, stockpiles, rock crushing and concrete batch plants, temporary roads.
- **Primary site access:** will be a new site entrance from Twelve Mile Road, approximately 17km east of Wellington. Secondary access points on Twelve Mile Road, Uungula Road and Ilgingerry Road.

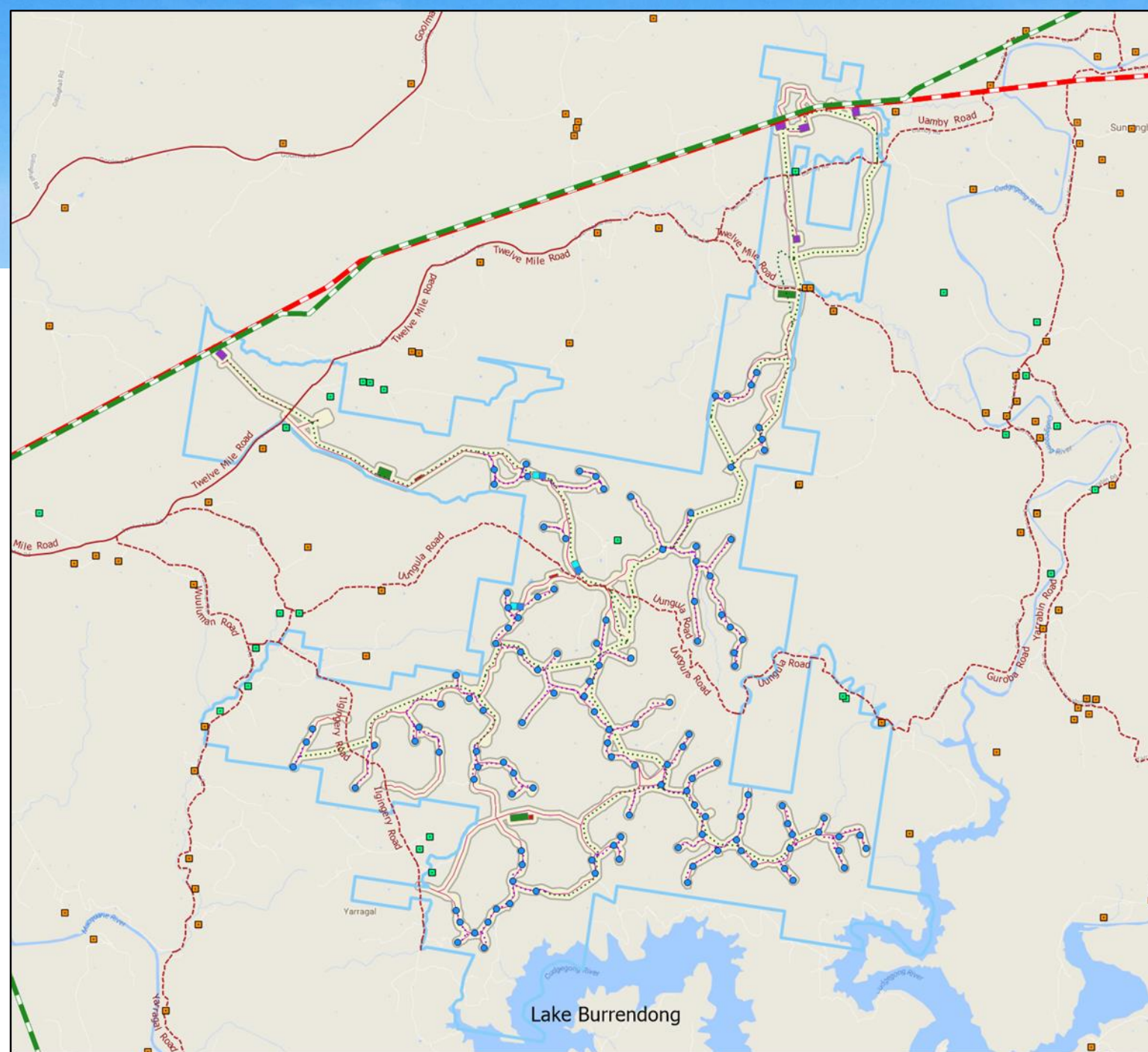




Current Project Layout

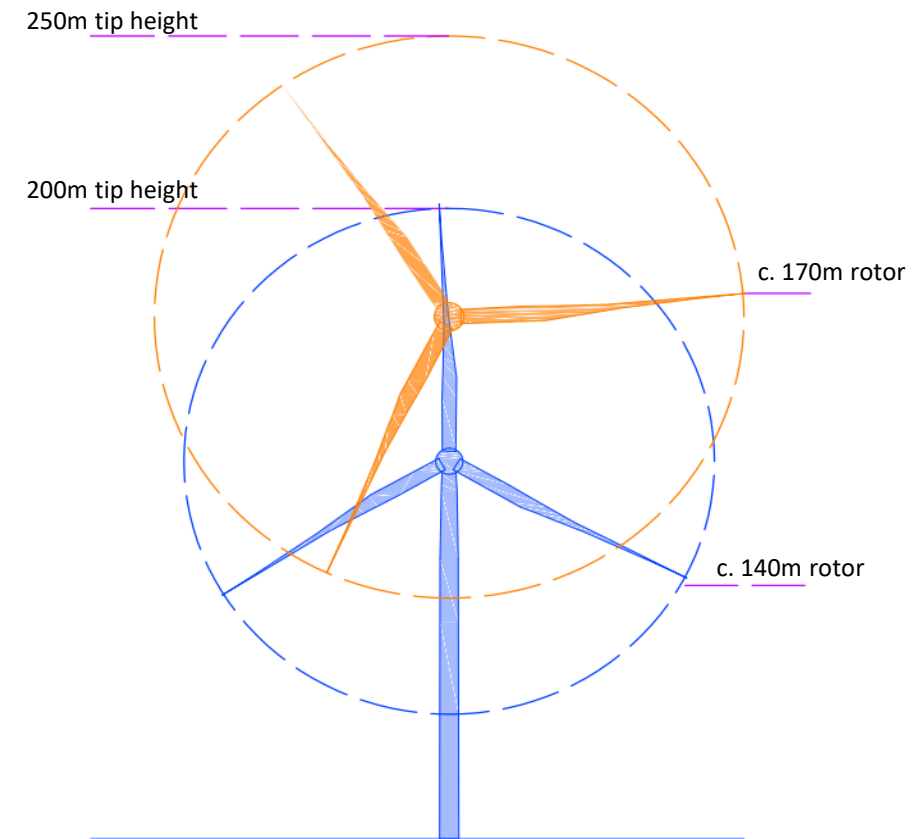


The Project Design has changed extensively in response to community feedback, environmental investigations, market dynamics and technological advancements changes over time.



Project Description

- The proposed Project would comprise up to 125 WTGs, ancillary infrastructure and temporary facilities.
- A WTG between 200 m and 250 m is being considered.
- Larger WTGs provide greater generation from fewer WTGs, lowering the levelized cost of electricity.
- The Project design will comply with the requirements of the *NSW Wind Energy Guideline* (DPE 2016), *Wind Energy: Visual Assessment Bulletin* and *Wind Energy: Noise Assessment Bulletin*.
- We are working closely with neighbours and the community to assess the impacts of the larger WTGs, including independent visual and noise assessments and direct consultation.
- Currently undertaking a thorough analysis of all associated Project impacts, particularly visual amenity and noise.
- A decision will be made on the Project dimensions following completion of those studies, likely in Q2 of 2019.



Community Consultation



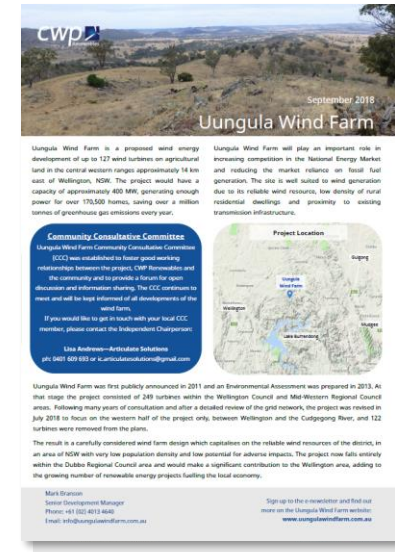
Delivering Energy, Powering
Communities
www.cwprenewables.com

We are continuing respectful engagement and consultation to seek community views and input.

Community Landscape Survey

The community landscape values survey distributed throughout October and November 2018.

- available on the project website
- Two e-newsletters were sent to 146 webpage subscribers and
- hardcopies were sent to all dwellings within 8km and along the proposed transport route.
- 22 responses were received from the local community with mixed responses.
- Good support for renewable energy in the region.
- Mixed support for the location of the wind farm
- Landscape values include:
 - Bushland areas
 - Views
 - Farming
- Lake Burrendong and bushland areas were reported to be the most valued landscape features.



Uungula Wind Farm
Community Survey of Landscape Values

Name: _____

Which location best describes where you live?

☐ Twelve Mile ☐ Waukamon
☐ Yarragall ☐ Wellington
☐ Pambong ☐ Yarralton
☐ Lake Burrendong ☐ Boodangra
☐ Gooma ☐ Mudgee
☐ Elsewhere in NSW ☐ Outside NSW

What is your gender?
☐ Female ☐ Male ☐ Prefer not to say

What is your age group?
☐ 18-29 ☐ 30-44 ☐ 45-59 ☐ 60+ ☐ Prefer not to say

If you live close to the proposal, are you currently involved in the project?
☐ Yes ☐ No ☐ I do not live close by

What do you value most about the local area?
(Choose one or more)

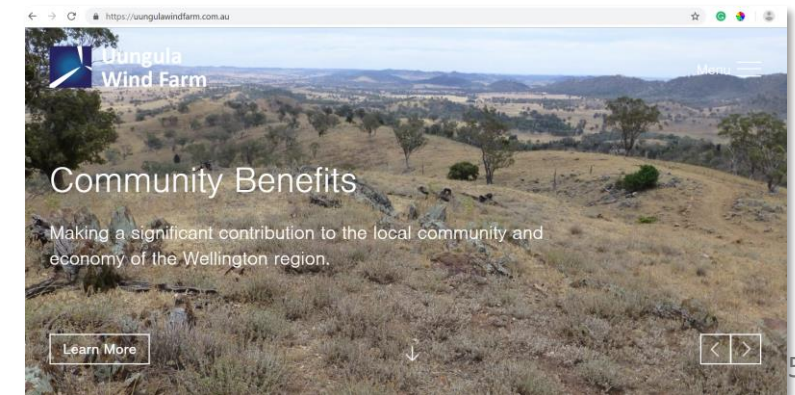
☐ Community ☐ Local history
☐ Views ☐ Recreation areas
☐ Farming ☐ Bushland areas
☐ Employment opportunities

What landscape features do you think have the most scenic value in the local area? (Choose one or more)

☐ Lake Burrendong
☐ Wellington Caves
☐ Moon Arthur Scenic
☐ Bushland areas
☐ Rocky hills and outcrops
☐ Farmland and rolling hills
☐ Local rivers and creeks

Do you support renewable energy investment in your region?
☐ Yes ☐ No ☐ Indifferent

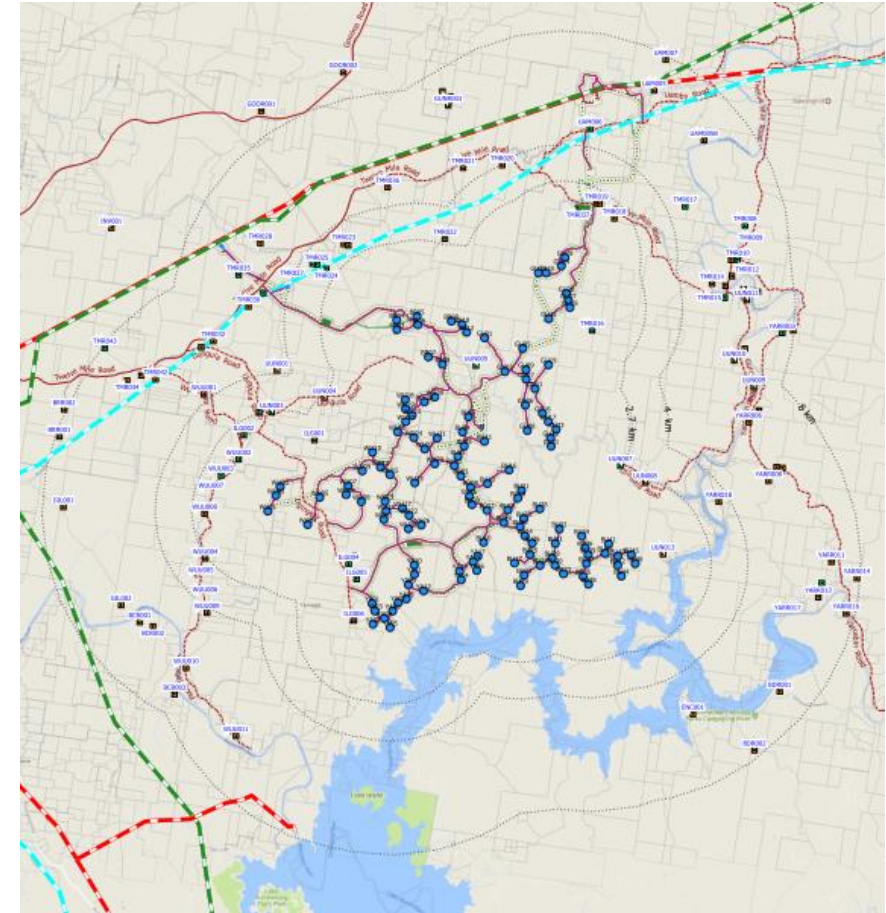
Please post this form to: Uungula Wind Farm
CWP Renewables
PO Box 1708
Newcastle NSW 2300



Community Consultation

Ongoing Consultation

- Newsletters and direct mailouts have been used to communicate with the local community.
- Direct consultation with close neighbours has been undertaken and Neighbour Agreements have been offered on the basis of anticipated visual and noise impacts.
- Direct consultation with neighbours close to the Project will continue.
- Website, e-newsletters, mailing lists, and landowner visits will continue to share information on:
 - Project design
 - Potential project impacts
 - Transport and traffic management
 - Opportunities for feedback and input
- Meetings will be held with Council.
- A Public Open Day will be held prior to the EIS exhibition period.



Economic Benefits

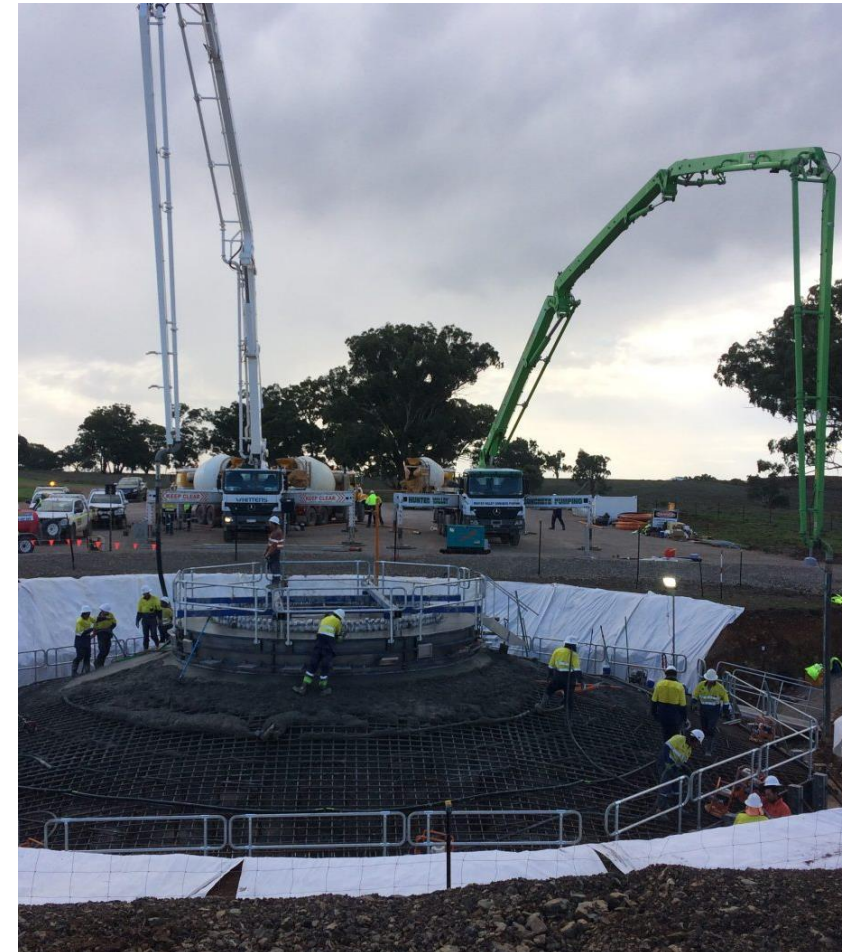
An economics benefit study was completed by Essential Economics with the following results:

- approximately 650 FTE jobs (250 FTE direct and 400 FTE indirect) throughout construction phase.
- approximately 100 FTE jobs (25 FTE direct and 75 FTE indirect) throughout operations phase, with 35 FTE positions expected to be created locally.
- This level of employment would equate to \$10.0 million in wages (2018 dollars) with a considerable portion to be spent within Dubbo and Wellington.
- An estimated \$5.6 million in wages (2018 dollars) would likely be directed to local and regional businesses and service providers during the construction period.
- This spending would be likely to include the following:
 - Housing and accommodation;
 - Retail expenditure;
 - Recreation spending associated with day trips and excursions, purchases in pubs and clubs;
 - Personal, medical and other services, such as GP fees and local prescriptions, household cleaning services, fuel, vehicle maintenance and so on.
- This level of personal spending would support approximately 30 FTE jobs (rounded) in the services sector.



Community Benefits

- In addition to the economic benefits the Project will yield a number of benefits for the local community.
 - Rates and levies paid by the Project direct to Council.
 - Road upgrades and maintenance agreements between the Project and Council.
 - Income for host landowners.
 - Neighbour Agreements providing direct remuneration to Project neighbours.
 - Increased employment and stimulus for local farming operations.
- A community investment program currently being rolled out at Sapphire Wind Farm in northern NSW will be investigated for this Project to enable the local community to become a part owner of the wind farm.
- A community benefits fund focused on community initiatives is being evaluated with Council, focused on areas of need and genuine concern to the local community.
- Input and recommendations from the CCC are welcome.



Wind Monitoring campaign

- Wind resource monitoring has been ongoing since 2008.
- There are currently two temporary 60 m monitoring masts within the project site.
- One additional 100 m temporary mast is currently being installed.
- Upgrades and repairs to the existing masts are underway.
- Further temporary masts may be required.
- Multiple mobile wind monitoring units are currently on site.
- All masts are being installed consistent with the NSW Infrastructure SEPP and aviation authorities have been notified.
- If the Project is approved and constructed,
 - Existing temporary masts are likely to be removed.
 - Up to six permanent monitoring masts at hub height will be installed prior to operations.
 - The purpose of the masts is to support calibration and monitoring of the WTGs.



Environmental Impact Statement

An Environmental Impact Statement (EIS) is currently being prepared in accordance with SEARs, the NSW Wind Energy Framework (DPE 2016), Wind Energy: Visual Assessment Bulletin and Noise Assessment Bulletin.

The following technical studies are now being finalized and will be included in the EIS:

- **Landscape and visual impact assessment** - Moir Landscape Architecture Pty Ltd
- **Noise and vibration impact assessment** – Sonus
- **Biodiversity assessment report** - Eco Logical Australia
- **Cultural heritage impact assessment** - NSW Archaeology
- **Economic Impact Assessment** – Essential Economics
- **Transport Route Study** – Rex J Andrews
- **Traffic and transport impact assessment** - Samsa Transport Consultants
- **Hazards / risks** – (Aviation, Telecommunications, Health, Bushfire, Blade Throw)

Public submissions will be welcomed, and the community will be notified when it is released.



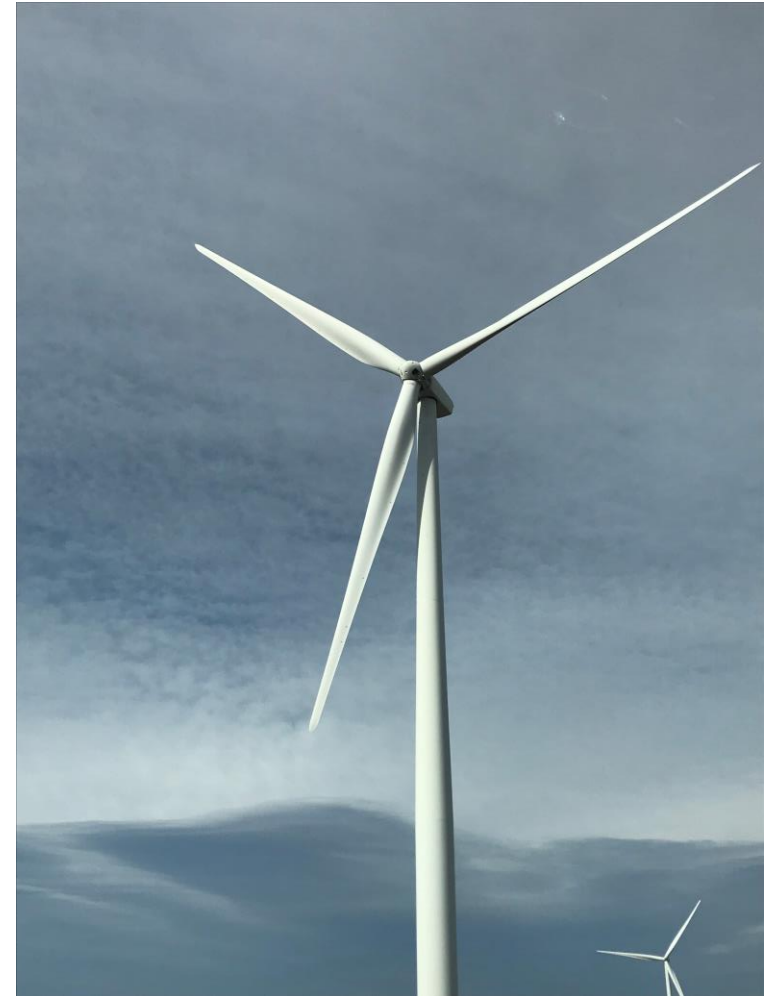
Planning and approval process



*Delivering Energy, Powering
Communities*

www.cwprenewables.com

- Discussions with DPE regarding the proposed increase in WTG height have been underway since Q4 2018 and an extension on the EIS submission timeframe has been granted.
- An Environmental Impact Statement (EIS) is currently being prepared.
- It will include technical studies undertaken by independent consultants, a summary of consultation activities and changes made to the Project to appease community concerns.
- The EIS is expected to be lodged in mid 2019 and before going on exhibition for 60 days.
- The EIS lodgement has been delayed to allow more time for impact assessments and community engagement prior to lodgment.
- The Project website will provide updates on the planning and approvals process:
<https://uungulawindfarm.com.au/planning-and-approvals/>
- Further information can be found on the DPE website:
<http://majorprojects.planning.nsw.gov.au/>



Timeline



Key next steps:

- Community consultation is ongoing
- Technical studies are being finalised for the EIS
- Engagement with Council regarding road upgrades
- Next CCC meeting end of April
- Public Open Day to be held prior to EIS lodgement
- Public Exhibition of the EIS

Contact Us



*Delivering Energy, Powering
Communities*

www.cwprenewables.com

The project website will be updated regularly as the project progresses

<https://uungulawindfarm.com.au>

Mark Branson

Senior Development Manager

CWP Renewables

Mob: 0402 259 580

Email: mark.branson@cwprenewables.com

Jessica Petersen

Development Officer

CWP Renewables

Tel: 02 4013 4640

Email: Jessica.Petersen@cwprenewables.com