

# Uungula Wind Farm



# Uungula Wind Farm

Uungula Wind Farm is proposed between Wuuluman and Twelve Mile, north of Lake Burrendong approximately 14 east of Wellington, NSW.

- **Generating capacity of approximately 400 MW.**
- **Up to 109 wind turbine generators (WTGs).**
- **Ancillary infrastructure:** site offices, internal roads, hardstands, underground and overhead cabling, monitoring masts, substation, a battery and a switching station.
- **Temporary facilities:** site compounds, laydown areas, stockpiles, rock crushing and concrete batch plants, temporary roads.
- **Primary site access:** will be a new site entrance from Twelve Mile Road, approximately 13 km east of Goolma Road for over-dimensional and heavy vehicle access. Secondary access points on Uungula Road and Ilgingerry Road may be used.

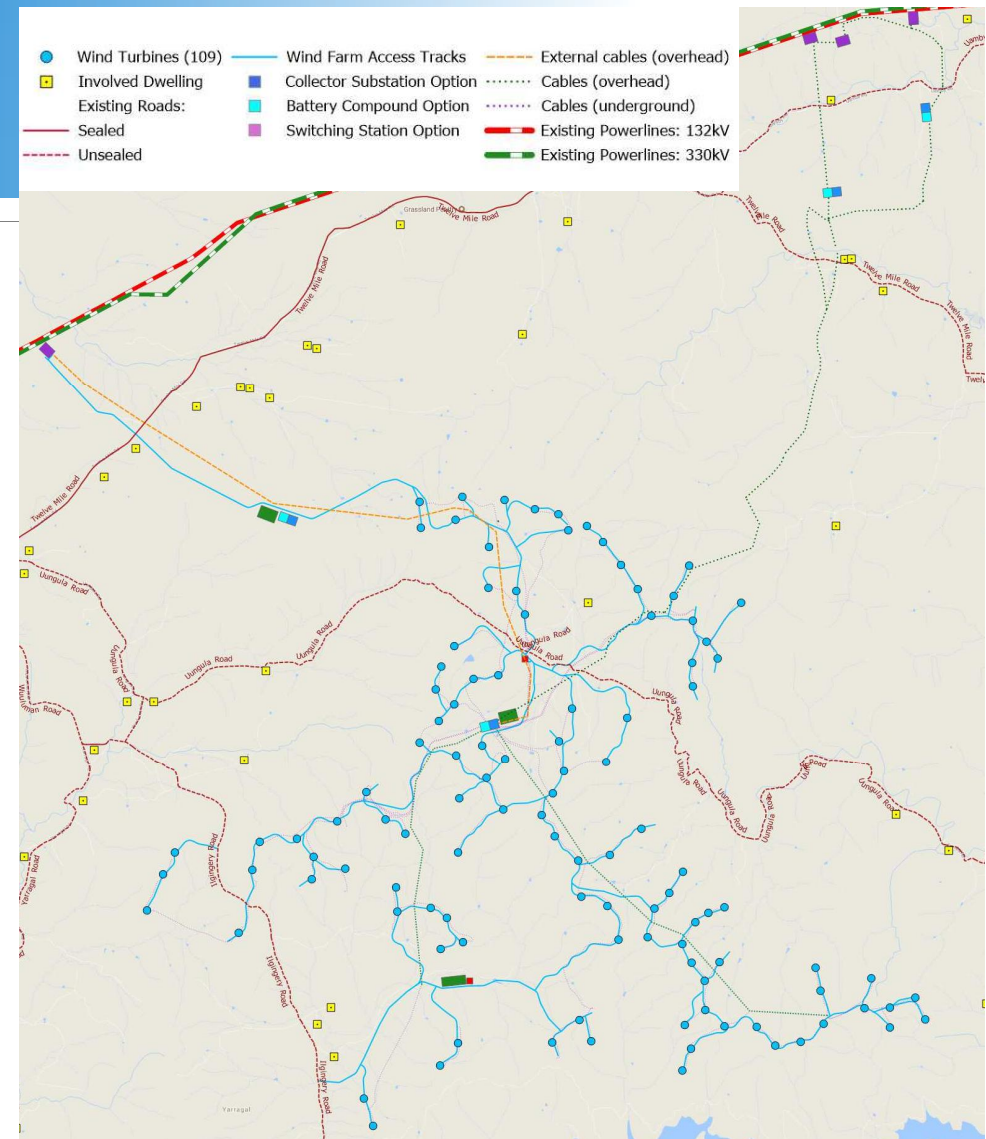




# Project Update

Key activities since last CCC meeting has been a focus on reviewing the existing design through a process verifying the turbine locations and obtaining a revised civil and electrical design. This layout can be progressed through the development application process with confidence.

- The Project now proposes up to 109 turbine locations (up to 250m in height and 170m in diameter).
- Transport studies have been undertaken to analyse the proposed route options and feasibility in navigation along Twelve Mile Road and as far back as the proposed Port of Newcastle.
- Consultation has been undertaken with key transport stakeholders Dubbo Regional Council and Roads and Maritime Services. This is ongoing.
- The 100 m meteorological mast has been installed on the site and is now fully operational.



# Twelve Mile Road

A concept study has been undertaken to identify:

- the general condition of the current road; and
- the navigability for a long wind turbine blade.

Further studies will be required in liaison with Dubbo Regional Council during the development of the EIS and then during the assessment and post-consent periods.



# Planning and Approvals

An Environmental Impact Statement (EIS) is in preparation.

The EIS is pursuant to the *NSW Wind Energy Guideline* (DPE 2016), *Wind Energy: Visual Assessment Bulletin* and *Wind Energy: Noise Assessment Bulletin*.

The EIS lodgement was anticipated in mid 2019 however it has been delayed to allow for the design verification work prior to receiving revised impact assessments and community engagement prior to lodgment.

The EIS is expected to be lodged in early 2020 before going on exhibition for 30 days.

The public will be invited to make submissions on the Project application, directly to the Department of Planning, Industry and Environment

The Proponent reviews the submissions and prepares a response.

The Project website will provide updates on the planning and approvals process:  
<https://uungulawindfarm.com.au/planning-and-approvals/>





# Community Enhancement

Previous discussions with stakeholders regarding community contributions the Project could make in the local area. These institutions have included:

- Police Citizens Youth Club of NSW
- TAFE NSW
- Aboriginal Employment Strategy
- Charles Sturt University

These discussions will be reinvigorated following the design verification work as we move to finalise the EIS for submission and public exhibition. That point will not be the conclusion of discussions as they will be ongoing throughout the project development, planning, contracting and operational phases.

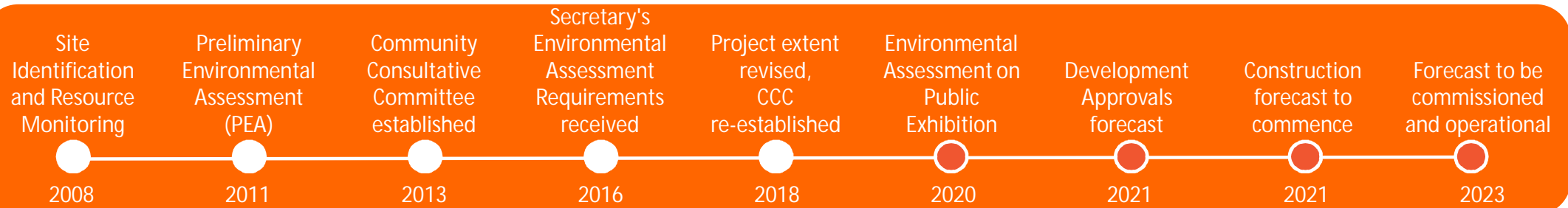


# Next steps



The development application and EIS are expected to be lodged in Q1 2020.

# Timeline



## Key next steps:

- Community Enhancement Fund discussions are ongoing
- Engagement with Council regarding road upgrades
- EIS is in preparation
- Public Open Day to be held prior to EIS lodgement
- Public Exhibition of the EIS



# Contact details



For further information please contact:

Matthew Flower  
Development Manager  
M: 0414 136 476  
[Matthew.Flower@cwprenewables.com](mailto:Matthew.Flower@cwprenewables.com)

Jessica Petersen  
Development Officer  
[Jessica.Petersen@cwprenewables.com](mailto:Jessica.Petersen@cwprenewables.com)

CWP Renewables Pty Ltd  
PO Box 1708  
Newcastle, NSW, 2300  
T: 02 4013 4640

